

Oklahoma



Forest Health Highlights 2008

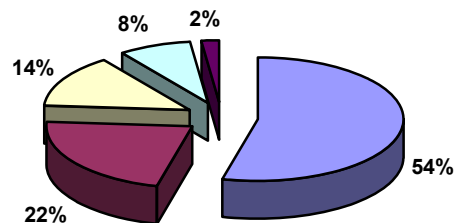
The Resource

Oklahoma's forests cover 10 million acres, about 20% of the state's land area. Some 6.9 million acres of the states forested land is in ownership, while are in national forest. prized for their scenic and outdoor recreation and throughout the state. Major include oak-hickory, mixed oak-pine, and oak-



nonindustrial private approximately 397,000 acres Oklahoma's forests are beauty, supporting tourism providing wildlife habitat forest types in the state loblolly and shortleaf pine, gum-cypress.

Oklahoma Forest Type Distribution



- Oak-hickory
- Loblolly-shortleaf pine
- Oak-pine
- Elm-ash-cottonwood
- Oak-gum-cypress

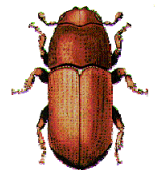
Forest Influences and Programs

Oak decline continued to cause some mortality and dieback of oaks in Oklahoma in 2008. Although present across much of the eastern forested area, numerous areas of mortality ranging in size from ¼ to 15 acres were noted in McCurtain County during aerial detection survey.



Ice storm damage from the December, 2007 storm continued to be cleaned up in an area from Chickasha to Norman, Oklahoma City, and Tulsa. The greatest impact was on urban forests. Oklahoma Forestry Services and the USDA Forest Service provided assessments of tree damage utilizing GIS technology for FEMA filings and response planning.

Southern pine beetle (SPB) was absent from Oklahoma again in 2008. Spring trapping did not recover any beetles, either. **Ips engraver beetles**, however, caused isolated pine mortality and **pine sawfly** occurred in small areas causing noticeable defoliation but little economic or biological impact.



Forest Health Assistance in Oklahoma

Oklahoma Department of Agriculture
Forestry Services
2800 N. Lincoln Blvd.
Oklahoma City, OK 73105
405-522-8888
George.geissler@oda.state.ok.us
<http://www.forestry.ok.gov/>

USDA Forest Service
Southern Region, State & Private Forestry
Forest Health Protection
2500 Shreveport Hwy.
Pineville, LA 71360
318-473-7286
<http://www.fs.fed.us/r8/foresthealth/>