



Louisiana

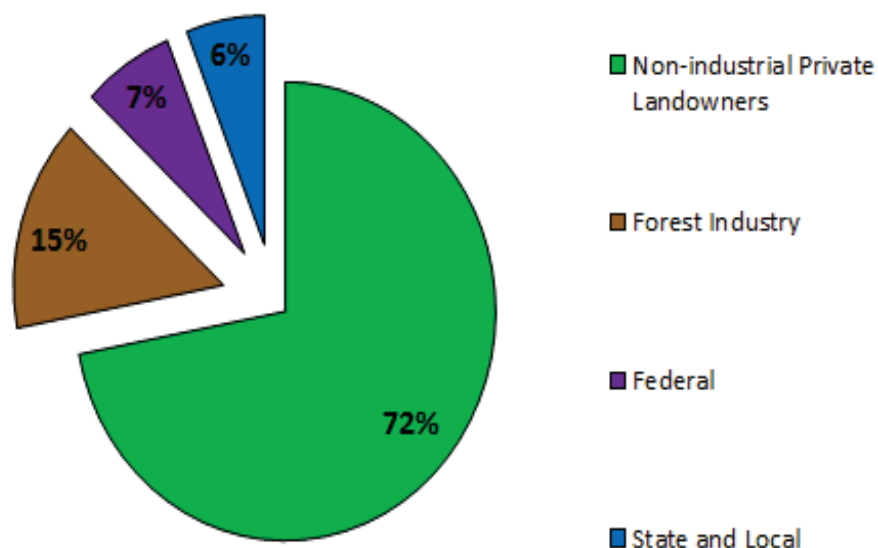
Forest Health Highlights 2019

The Resource

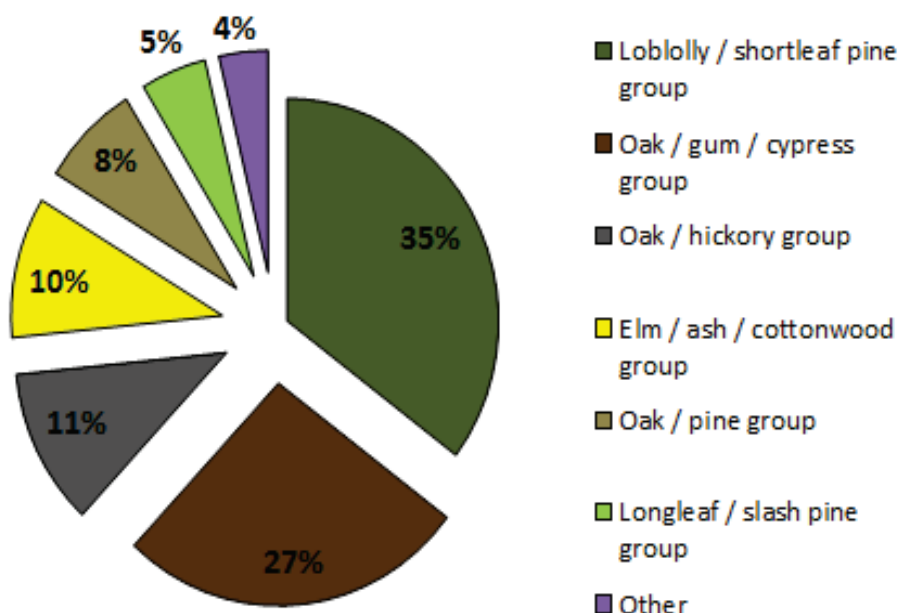


Louisiana's forests cover 15 million acres, nearly half of the state's land area. The majority of the state's forested land, some 10.8 million acres, is in non-industrial private ownership, while approximately 604,000 acres are in national forests. Louisiana's forests are prized for their scenic beauty, supporting tourism and outdoor recreation and providing wildlife habitat throughout the state. Major forest types in Louisiana include loblolly and shortleaf pine, oak-gum-cypress, oak-hickory, elm-ash-cottonwood, mixed oak-pine, and longleaf and slash pine. Other minor types account for approximately 4% of the forest.

Louisiana Land Ownership Distribution



Louisiana Forest Type Distribution



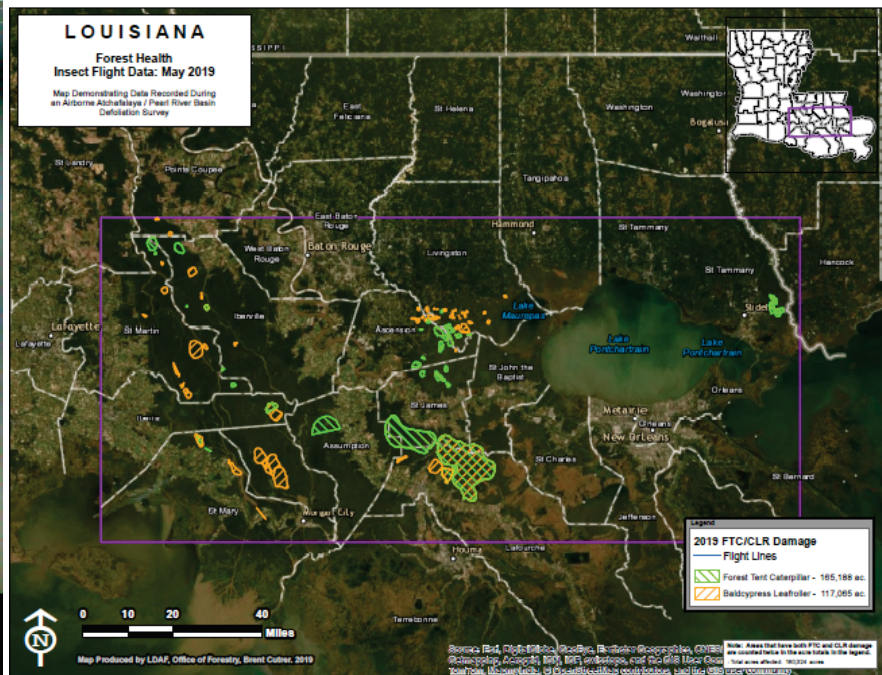
Forest Influences and Programs

Southern pine beetle (SPB) is Louisiana's most significant forest insect pest. However, SPB activity in the state has been insignificant since the late 1990's. In 2018, we recorded 23 SPB spots in the Feliciana's. Our annual spring SPB survey has caught SPB specimens in 2018 and 2019. This past year, we've flown 72 whole survey flights across our state. The Louisiana Office of Forestry continues to monitor and educate landowners on SPB.



Pine engraver beetles (*Ips* spp.) and the black turpentine beetle remain at relatively normal levels. Because *Ips* infestations tend to be relatively small and scattered, they usually cannot be effectively controlled or salvaged, but their economic costs may exceed those caused by SPB. We've recorded 80 *Ips* infestations in 2019.

Forest tent caterpillar caused defoliation this spring on about 165,188 acres of tupelo gum wetlands in South Louisiana. Much of the defoliated area was also affected by defoliation due to baldcypress leafroller.



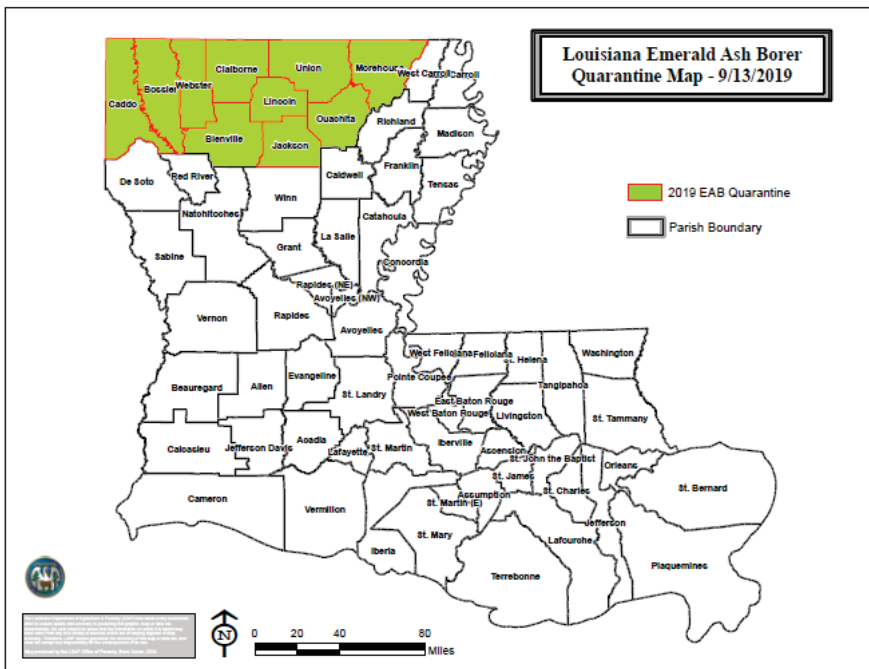


Baldcypress leafroller also caused defoliation on about 117,065 acres of mixed baldcypress stands in southeastern Parishes, mostly associated with forest tent caterpillar defoliated areas.

Gypsy Moth survey was conducted using 189 traps across the state and no gypsy moths were captured.



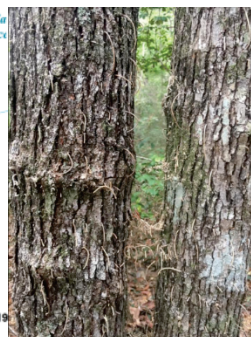
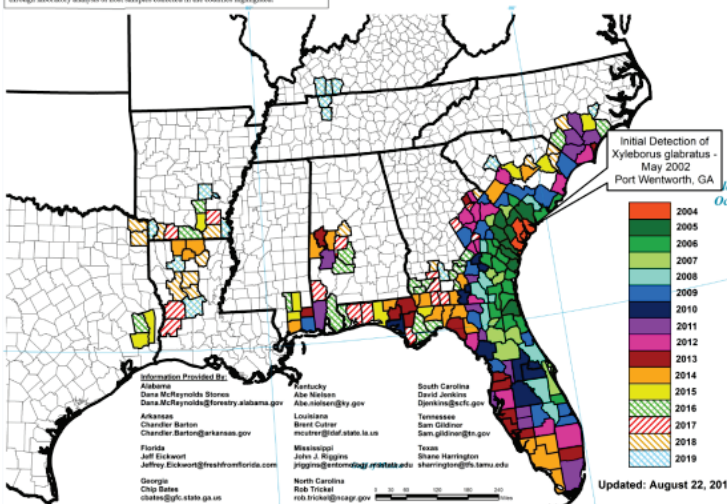
Emerald Ash borer was first confirmed in Webster Parish in February of 2015. It has since been confirmed in Bossier, Claiborne, Union, Lincoln, Bienville, Jackson, Morehouse, Ouachita, and Caddo Parishes. Our EAB survey didn't record any new infested parishes this past year. We have continued to inform landowners of this pest and have distributed information through press releases and handouts. We continue to coordinate with other agencies to monitor and implement our EAB response plan.



Laurel Wilt Disease and the Redbay Ambrosia Beetle made its introduction into Union Parish, Louisiana in September 2014. The beetle has also been confirmed in Claiborne, Lincoln, Vernon, Beauregard, Grant, Natchitoches, Winn, Ouachita, Bienville, and Rapides Parishes. Bienville and Rapides were added this year. Our foresters continue to observe for declining sassafras and redbay trees caused by laurel wilt.

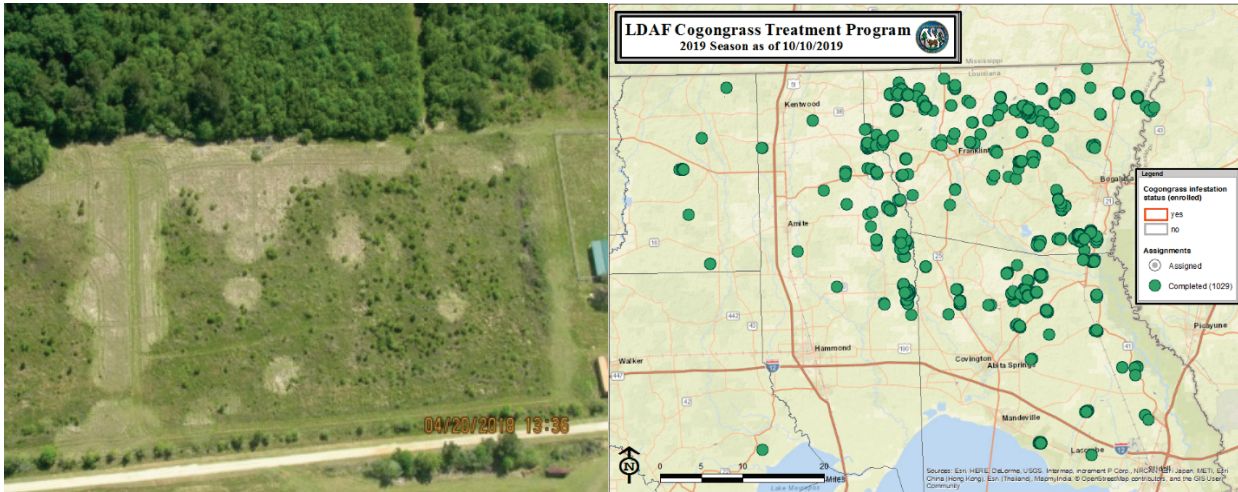
Distribution of Counties with Laurel Wilt Disease* by year of Initial Detection

* Laurel Wilt Disease is a destructive disease of redbay (*Persea borbonica*), and other species within the laurel family. Laurel wilt is caused by a vascular wilt fungus (*Raffaelia laurivora*) that is vectored by the redbay ambrosia beetle (*Xyleborus glabratus*). The pathogen has been confirmed through laboratory analysis of host samples collected in the counties highlighted.



Cogongrass is a serious invasive species occurring primarily in southeast Louisiana. LDAF has implemented a new Cogongrass Treatment Program that is finishing up its second year. Currently, we've documented 1,430 infestations for 265 acres and have treated 1,107 infestations for 208 acres

this past year. LDAF advertised our program in our department's market bulletin to help spread the word about cogongrass and the new treatment program that we have implemented.



Forest Health Contact Information:

Louisiana Department of Agriculture and Forestry
Office of Forestry

5825 Florida Blvd., Suite 6000

Baton Rouge, LA 70806

225-925-4500 – Baton Rouge Office

985-543-5047 – Hammond Office

Brent Cutrer, Forest Health Program Director

mcutrer@ldaf.state.la.us

[Louisiana Department of Agriculture and Forestry logo](#)

USDA Forest Service

Southern Region, State & Private Forestry

Forest Health Protection

2500 Shreveport Hwy.

Pineville, LA 71360

318-473-7286

[US Forest Service Forest Health Protection link](#)