

Louisiana

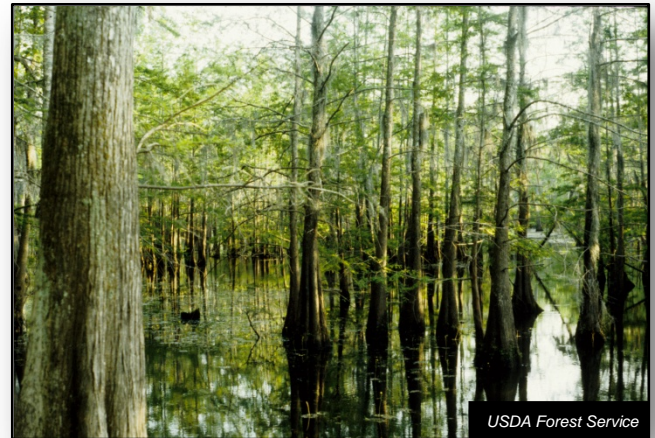


Forest Health Highlights

2012

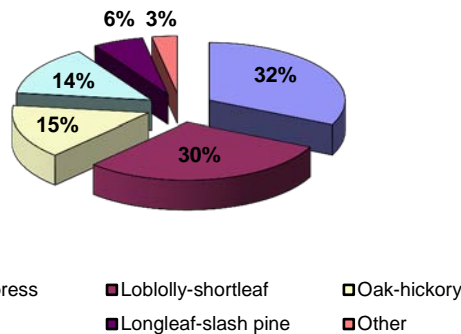
The Resource

Louisiana's forests cover 13.8 million acres, nearly half of the state's land area. The majority of the state's forested land, some 10 million acres, is in non-industrial private ownership, while approximately 603,500 acres are in national forests. Louisiana's forests are prized for their scenic beauty, supporting tourism and outdoor recreation and providing wildlife habitat throughout the state. Major forest types in Louisiana include oak-hickory, loblolly and shortleaf pine, longleaf and slash pine, mixed oak-pine, and oak-gum-cypress. Other minor types account for approximately 3% of the forest.



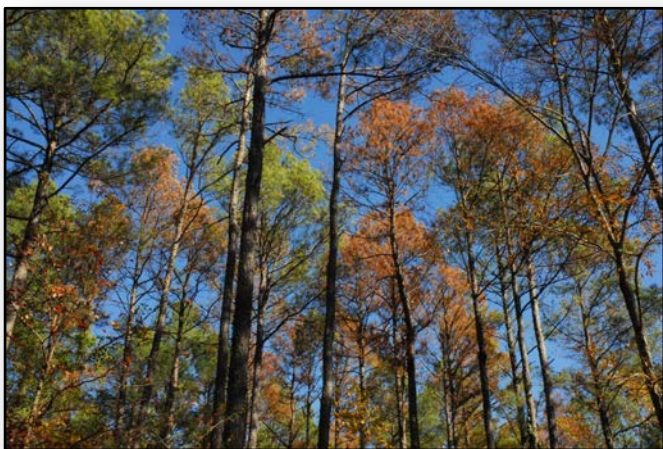
USDA Forest Service

Louisiana Forest Type Distribution



Forest Influences and Programs

Southern pine beetle (SPB) is Louisiana's most significant forest insect pest. However, activity in the state has been insignificant in recent years, a trend lasting about 13 years. No confirmed infestations were found in 2011 on private, state, or federal lands and no serious population buildup is likely. **Pine engraver beetles (*Ips spp.*)** remained high



Erich Vallery, USDA Forest Service

since 2010 with dying or dead pines abundantly visible over much of the state, although this mortality has been tapering off. This is mainly in response to the drought and heat prevalent during 2010. This situation continued through 2012 as drought conditions prevailed in many areas. Most of this damage remains unquantified due to the scattered nature of the mortality and the difficulty in detecting and evaluating it.

Forest tent

526,000 acres below. Much due to

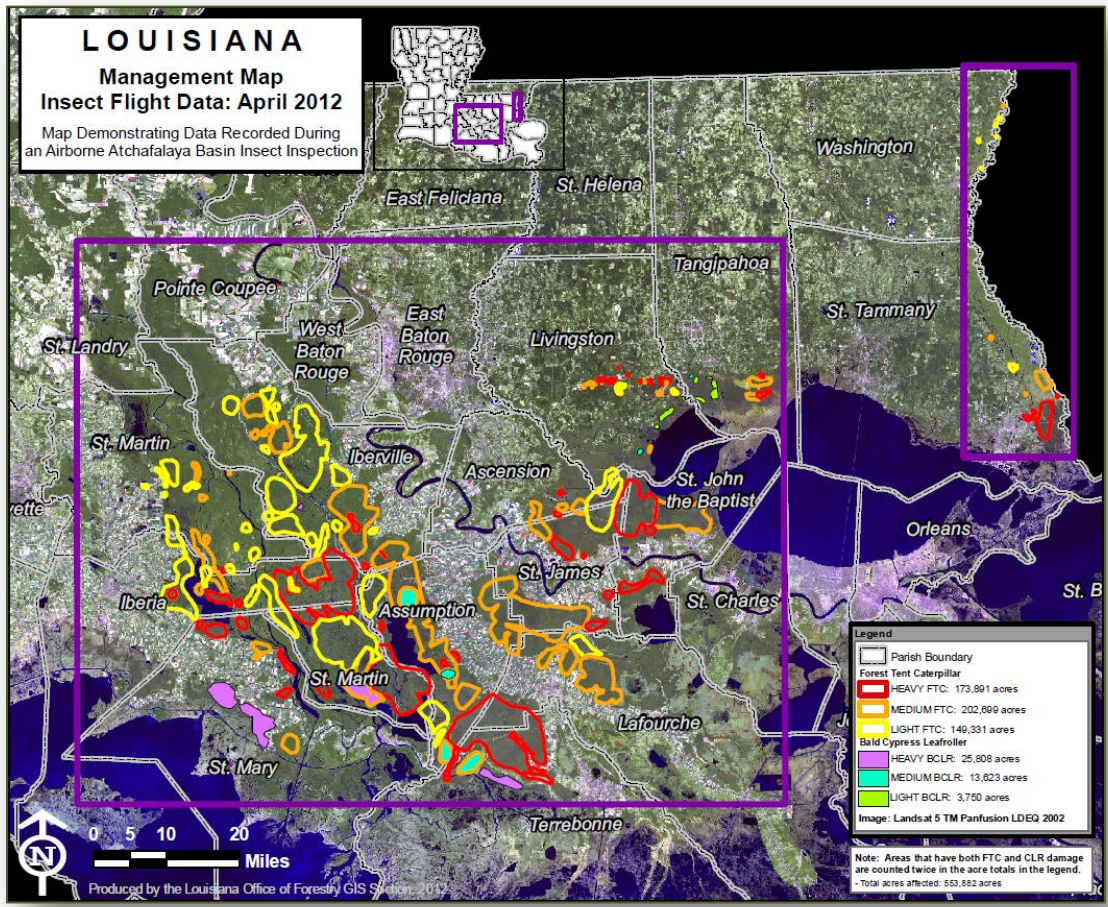


caterpillar caused defoliation this spring on about of tupelo gum wetlands in South Louisiana. See map of the defoliated area was also affected by defoliation baldcypress leafroller (see next).

William M. Ciesla,
Forest Health Management International,
bugwood.org



Baldcypress leafroller also caused defoliation on about 43,000 acres of mixed baldcypress stands in southeastern Parishes, mostly associated with forest tent caterpillar defoliated areas.



Forest Health Assistance in Louisiana

Louisiana Dept. of Agric. and Forestry
Office of Forestry
 P.O. Box 1628
 Baton Rouge, LA 70821
 225-925-4500
 dcampbell@ldaf.state.la.us
<http://www.ldaf.state.la.us/portal/>

USDA Forest Service
Southern Region, State & Private Forestry
Forest Health Protection
 2500 Shreveport Hwy.
 Pineville, LA 71360
 318-473-7286
<http://www.fs.fed.us/r8/foresthealth/>