



**File Code:** 2400  
**Route To:**

**Date:** March 20, 2017

**Subject:** Request for Additional Farm Bill Insect and Disease Designations

**To:** Regional Forester, Region 8

Per section 8204 of the Agricultural Act of 2014, I am requesting the designation of a landscape-scale area encompassing the remainder of the Choctaw, Kiamichi and Tiak Ranger Districts of the Ouachita National Forest in Oklahoma to address an unprecedented *Ips* engraver beetle outbreak. The designation would provide the districts the ability to address the insect or disease threat under section 602 of the Healthy Forest Restoration Act (HFRA) of 2003 (16 U.S.C. 6591a).

Additional designation is needed because the original 2014 designation for Oklahoma focused on southern pine beetle risk primarily in the southern district. This recent state-wide *Ips* outbreak has resulted in infestation, damage and mortality across all districts in Oklahoma.

Per the Chief's July 10, 2015, *Review Process for Healthy Forest Restoration Act Section 602(c), Additional Insect and Disease Landscape-Scale Area Designations* letter, I have enclosed a justification, including alignment with at least one of the 2014 Farm Bill criteria, a map of the additional areas requested, and a tabulation of the additional sixth-level 12-digit Hydrological Unit Code (HUC) subwatersheds.

For additional information, please contact Lisa Cline, Forest NEPA, Objections & Litigation Coordinator, at 501-321-5256, or email at [lcline@fs.fed.us](mailto:lcline@fs.fed.us).

*/s/ Norman Wagoner*  
NORMAN WAGONER  
Forest Supervisor

Enclosure



## **Additional Lands Needed to Address Insect and Disease Threats**

### ***Southeast Oklahoma, Le Flore and McCurtain Counties***

*Oklahoma Forestry Services - Oklahoma Department of Agriculture, Food and Forestry  
Choctaw, Kiamichi and Tiak Ranger Districts - Ouachita National Forest*

March 1, 2017

In 2014, initial landscape treatment areas were designated under Section 602 of the Healthy Forest Restoration Act for an insect and disease risk reduction program. See Figure 1. Their designation was supported, in part, by the 2012 National Insect and Disease Risk Map (NIDRM). See Figure 2. The 2014 Farm Bill allows for the Forest Service to pursue additional designations as needed to address insect or disease threats. The following information supports additional lands needed to address insect outbreaks in southeast Oklahoma.

In 2015, Oklahoma Forestry Services' southern pine beetle aerial detection flights discovered over a thousand dead pine spots across the counties, with the greatest concentration in McCurtain County. See Figure 3. In April 2016, Oklahoma Forestry Services personnel visited a subset of the data points recorded in the 2015 aerial flights. No evidence of southern pine beetle was found in Oklahoma but it became evident that the state is experiencing an outbreak of *Ips* engraver beetle on an unprecedented scale. Areas affected by this pest ranged from a series of small clumps of pine mortality up to a spot measuring three acres.<sup>1</sup>

A mixture of ownerships intermingle with National Forest System lands throughout the Oklahoma units. Structures and other human development meet with undeveloped wildland and vegetative fuels. See Figure 4 for an approximation of the wildland-urban interface.

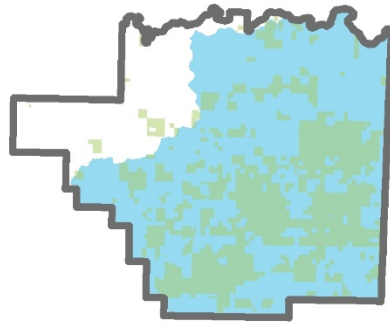
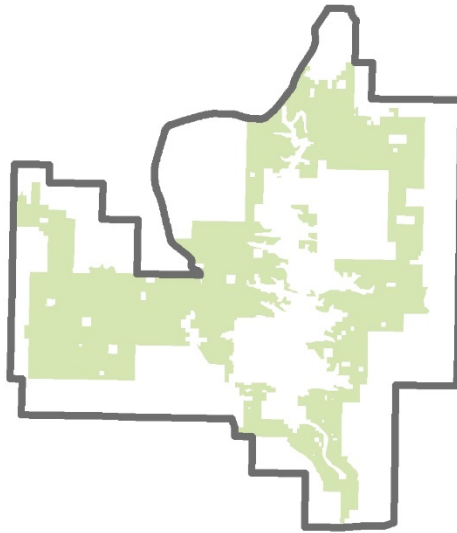
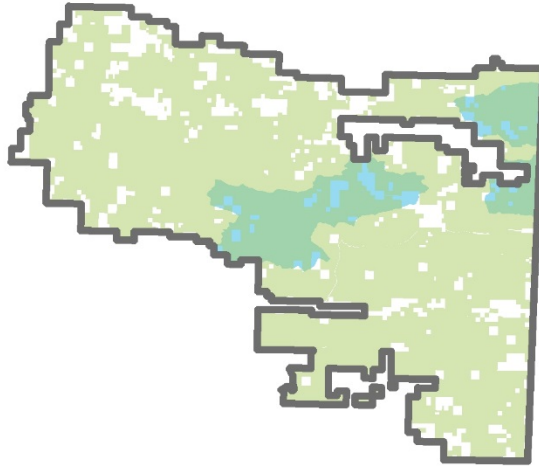
Section 602(c) of the bill establishes the criteria for designations. Specific to ***Criteria 3*** – *Is the area one in which the risk of hazard trees poses an imminent risk to public infrastructure, health, or safety?* Upon consideration of local data on existing pine mortality and its location to the wildland urban interface, the conclusion is yes; hazard trees and hazardous fuel conditions produced by tree mortality already exist. See Figure 5.

Per the Chief's July 10, 2015, *Review Process for Healthy Forest Restoration Act Section 602(c), Additional Insect and Disease Landscape-Scale Area Designations* letter, Figure 6 displays and Table 1 tabulates the sixth-level 12-digit Hydrological Unit Code (HUC) subwatersheds of the additional areas requested for designation.

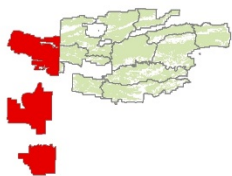
---

<sup>1</sup> [https://fhm.fs.fed.us/fhh/fhh\\_16/OK\\_FHH\\_2016.pdf](https://fhm.fs.fed.us/fhh/fhh_16/OK_FHH_2016.pdf)

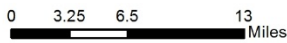
FIGURE 1



Vicinity Map



The Forest Service uses the most current and complete data available. GIS data and product accuracy may vary. They may be developed from sources of differing accuracy accurate only at certain scales, based on modeling or interpretation, and incomplete while being created or revised, etc. Using GIS products for purposes other than those for which they were created may yield inaccurate or misleading results. This information was released on the date shown below. The Forest Service reserves the right to correct, update, modify, or replace GIS products without notification. Designation of a road, trail or area for motor vehicle use by a particular class of vehicle under 36 CFR 212.51 is not represented on this map. It is the responsibility of the user to acquire the current Motor Vehicle Use Map (MVUM). The MVUM identifies those roads and trails designated for the motor vehicle use under 36 CFR 212.51 for the purpose of enforcing the prohibition at 36 CFR 261.13.



Map Creation Date - March 1, 2017  
Map Revision Date -

- Oklahoma Ranger District
- National Forest System Lands
- Designated Lands

Sheet 1 of 1

2014 Designated Lands within National Forest Ranger District Boundaries

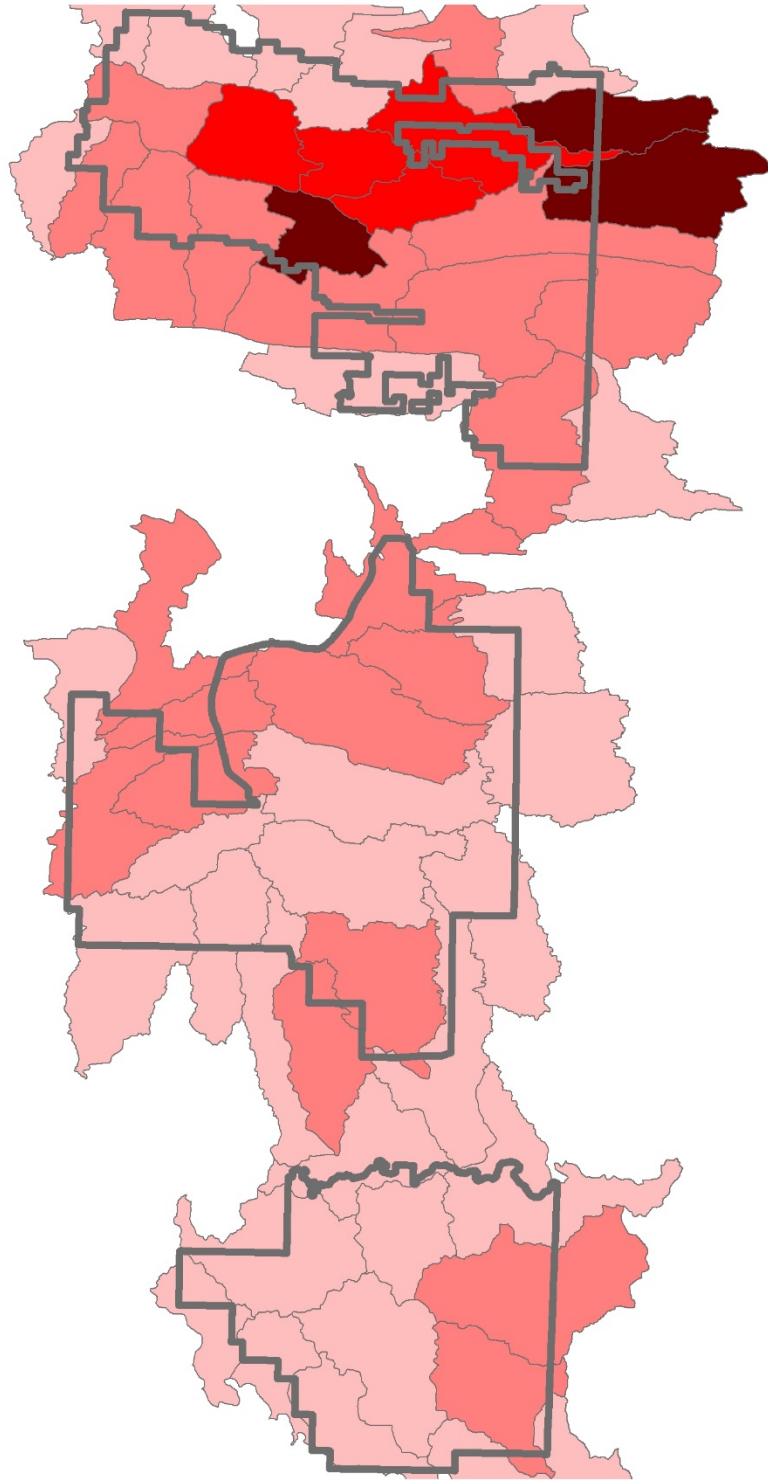
Oklahoma Ranger District

Le Flore & McCurtain Counties  
Oklahoma

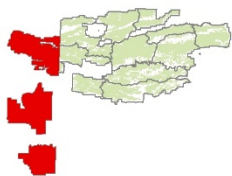
U.S. Forest Service - R8  
Ouachita National Forest

For more information, contact the OklahomaRD at 111 S State Hwy 259A, Broken Bow or phone (580) 494-6402

FIGURE 2



Vicinity Map



The Forest Service uses the most current and complete data available. GIS data and product accuracy may vary. They may be developed from sources of differing accuracy accurate only at certain scales, based on modeling or interpretation, and incomplete while being created or revised, etc. Using GIS products for purposes other than those for which they were created may yield inaccurate or misleading results. This information was released on the date shown below. The Forest Service reserves the right to correct, update, modify, or replace GIS products without notification. Designation of a road, trail or area for motor vehicle use by a particular class of vehicle under 36 CFR 212.51 is not represented on this map. It is the responsibility of the user to acquire the current Motor Vehicle Use Map (MVUM). The MVUM identifies those roads and trails designated for the motor vehicle use under 36 CFR 212.51 for the purpose of enforcing the prohibition at 36 CFR 261.13.

Treed Area at Risk

- Less than 5%
- 5-14%
- 15-24%
- 25% or greater
- Oklahoma Ranger District



0 3.25 6.5 13 Miles

Map Creation Date - March 1, 2017  
Map Revision Date -

Sheet 1 of 1

National Insect and Disease Risk Map (NIDRM)

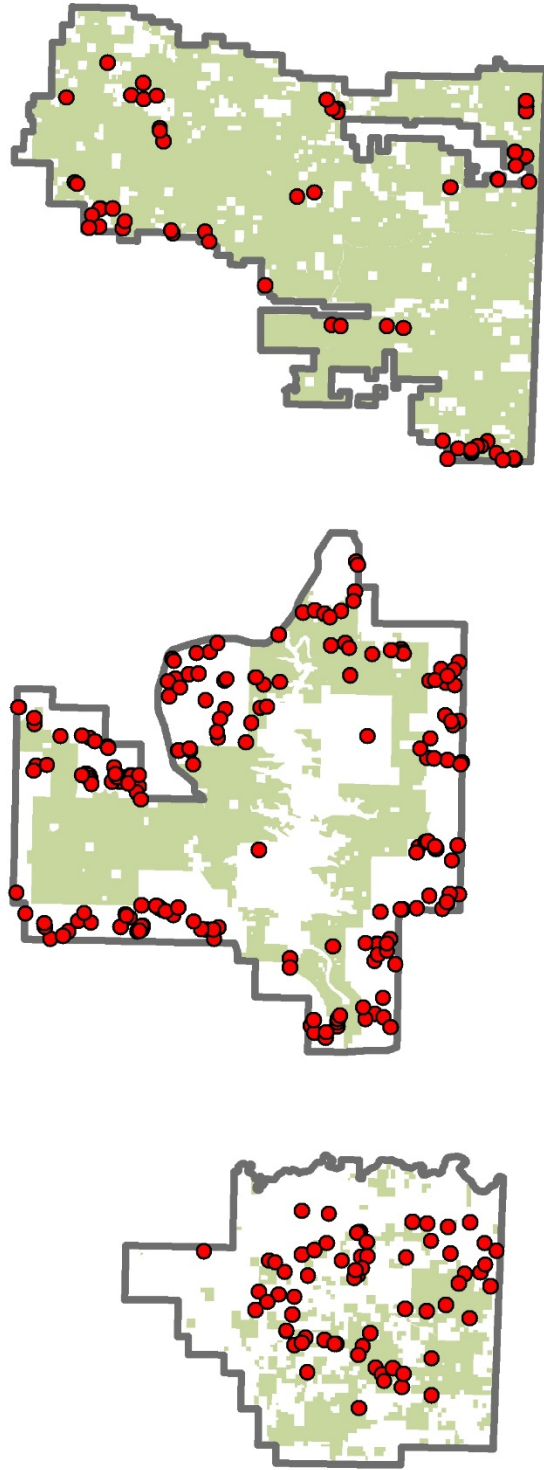
Sixth-level 12-digit HUC subwatersheds

Le Flore & McCurtain Counties Oklahoma

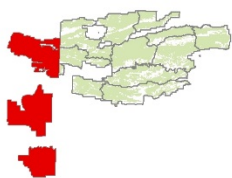
U.S. Forest Service - R8 Ouachita National Forest

For more information, contact the OklahomaRD at 111 S State Hwy 259A, Broken Bow or phone (580) 494-6402

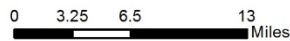
FIGURE 3



Vicinity Map



The Forest Service uses the most current and complete data available. GIS data and product accuracy may vary. They may be developed from sources of differing accuracy accurate only at certain scales, based on modeling or interpretation, and incomplete while being created or revised, etc. Using GIS products for purposes other than those for which they were created may yield inaccurate or misleading results. This information was released on the date shown below. The Forest Service reserves the right to correct, update, modify, or replace GIS products without notification. Designation of a road, trail or area for motor vehicle use by a particular class of vehicle under 36 CFR 212.51 is not represented on this map. It is the responsibility of the user to acquire the current Motor Vehicle Use Map (MVUM). The MVUM identifies those roads and trails designated for the motor vehicle use under 36 CFR 212.51 for the purpose of enforcing the prohibition at 36 CFR 261.13.



Ranger District Excerpt of Oklahoma Forestry Services Detection Flight

- Insect Infestations
- Oklahoma Ranger District
- National Forest System Lands

Map Creation Date - February 22, 2017  
Map Revision Date -

Sheet 1 of 1

October 2015 Aerial Detection Flight  
Oklahoma Forestry Services

Oklahoma Dept of Agriculture,  
Food and Forestry

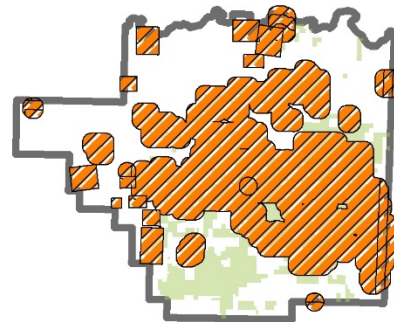
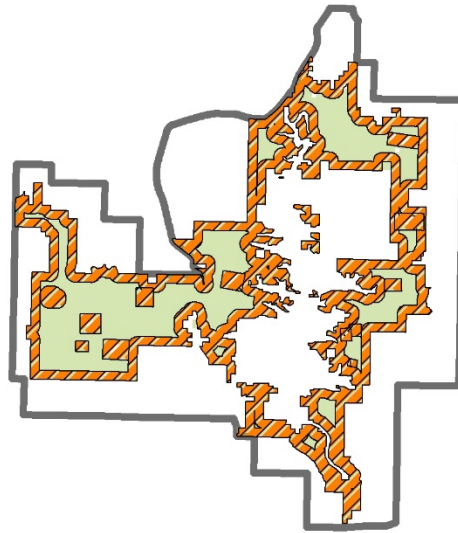
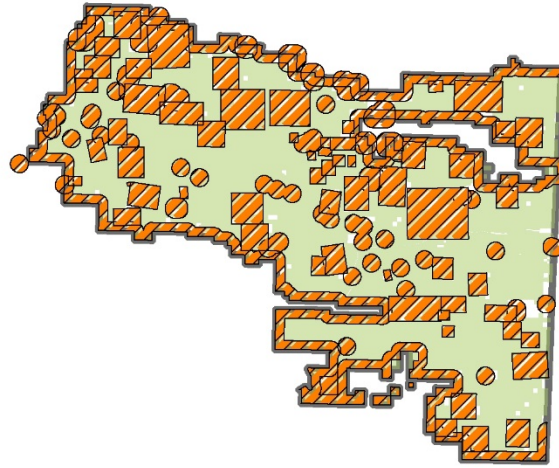
Le Flore & McCurtain Counties  
Oklahoma

U.S. Forest Service - R8  
Ouachita National Forest

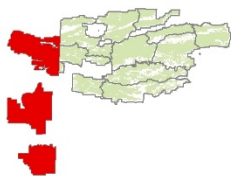
For more information, contact the  
OklahomaRD at 111 S State Hwy 259A,  
Broken Bow or phone (580) 494-6402



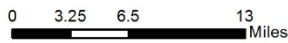
FIGURE 4



Vicinity Map



The Forest Service uses the most current and complete data available. GIS data and product accuracy may vary. They may be developed from sources of differing accuracy accurate only at certain scales, based on modeling or interpretation, and incomplete while being created or revised, etc. Using GIS products for purposes other than those for which they were created may yield inaccurate or misleading results. This information was released on the date shown below. The Forest Service reserves the right to correct, update, modify, or replace GIS products without notification. Designation of a road, trail or area for motor vehicle use by a particular class of vehicle under 36 CFR 212.51 is not represented on this map. It is the responsibility of the user to acquire the current Motor Vehicle Use Map (MVUM). The MVUM identifies those roads and trails designated for the motor vehicle use under 36 CFR 212.51 for the purpose of enforcing the prohibition at 36 CFR 261.13.



Map Creation Date - March 1, 2017  
Map Revision Date -

- WUI
- National Forest System Lands
- Oklahoma Ranger District

Sheet 1 of 1

Wildland Urban Interface

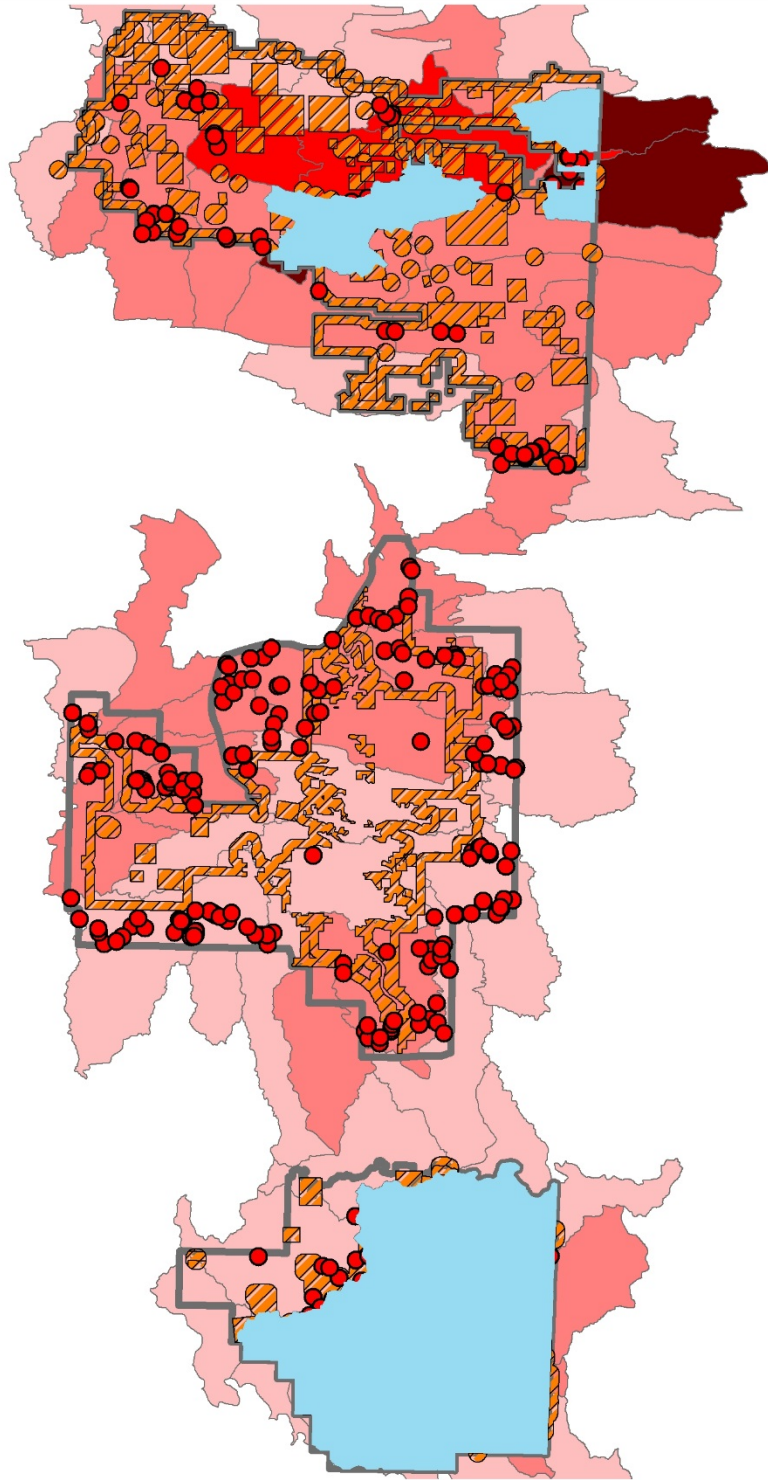
Oklahoma Ranger District

Le Flore & McCurtain Counties  
Oklahoma

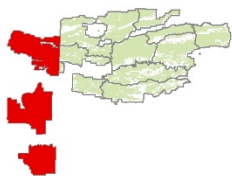
U.S. Forest Service - R8  
Ouachita National Forest

For more information, contact the  
OklahomaRD at 111 S State Hwy 259A,  
Broken Bow or phone (580) 494-6402

FIGURE 5



Vicinity Map



The Forest Service uses the most current and complete data available. GIS data and product accuracy may vary. They may be developed from sources of differing accuracy accurate only at certain scales, based on modeling or interpretation, and incomplete while being created or revised, etc. Using GIS products for purposes other than those for which they were created may yield inaccurate or misleading results. This information was released on the date shown below. The Forest Service reserves the right to correct, update, modify, or replace GIS products without notification. Designation of a road, trail or area for motor vehicle use by a particular class of vehicle under 36 CFR 212.51 is not represented on this map. It is the responsibility of the user to acquire the current Motor Vehicle Use Map (MVUM). The MVUM identifies those roads and trails designated for the motor vehicle use under 36 CFR 212.51 for the purpose of enforcing the prohibition at 36 CFR 261.13.



0 3.25 6.5 13 Miles

Map Creation Date - March 1, 2017  
Map Revision Date -

Sheet 1 of 1

Treed Area at Risk

- Less than 5%
- 5-14%
- 15-24%
- 25% or greater
- Designated Lands
- Insect Infestations
- WUI
- Oklahoma Ranger District

Composite Risk Factors

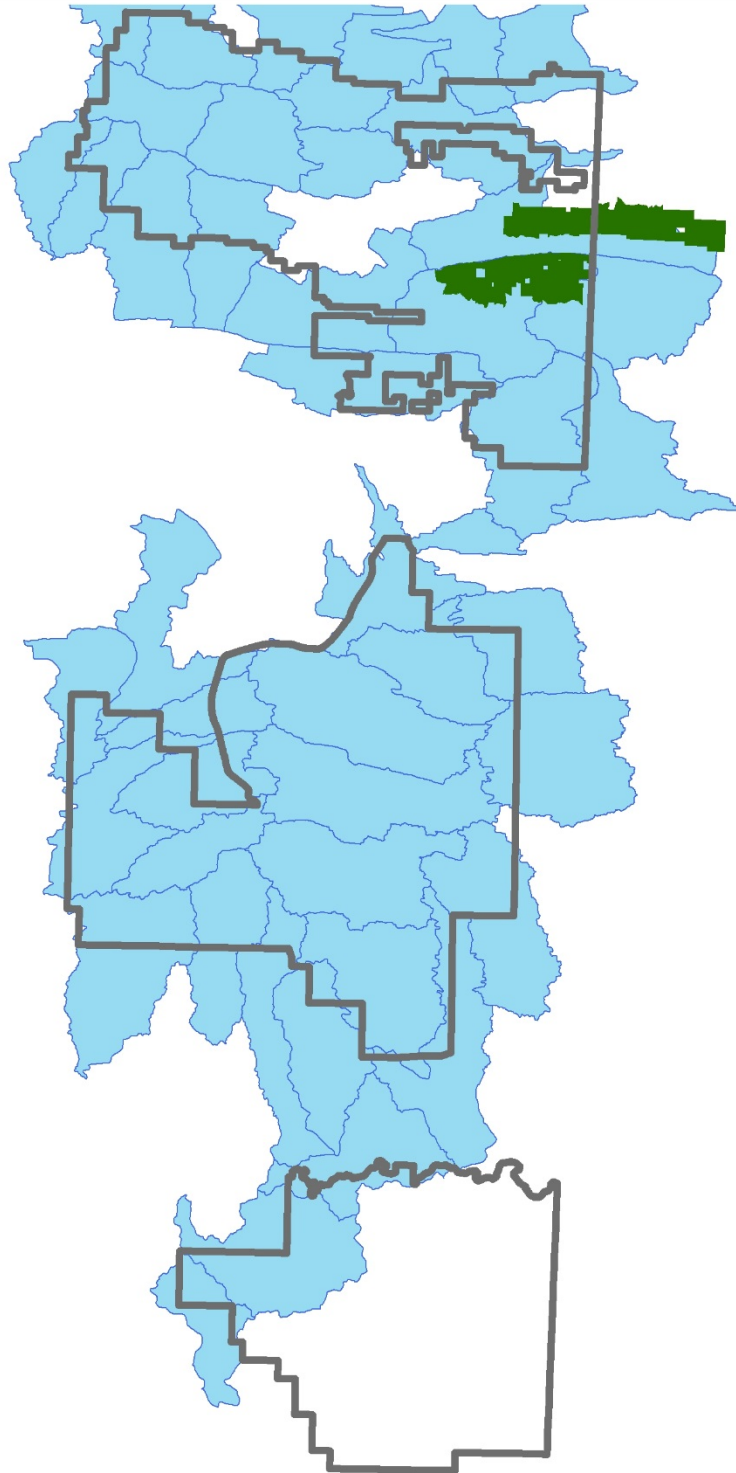
Oklahoma Ranger District

Le Flore & McCurtain Counties  
Oklahoma

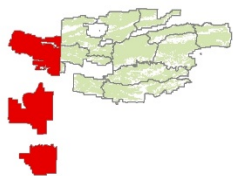
U.S. Forest Service - R8  
Ouachita National Forest

For more information, contact the  
OklahomaRD at 111 S State Hwy 259A,  
Broken Bow or phone (580) 494-6402

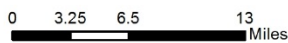
FIGURE 6



Vicinity Map



The Forest Service uses the most current and complete data available. GIS data and product accuracy may vary. They may be developed from sources of differing accuracy accurate only at certain scales, based on modeling or interpretation, and incomplete while being created or revised, etc. Using GIS products for purposes other than those for which they were created may yield inaccurate or misleading results. This information was released on the date shown below. The Forest Service reserves the right to correct, update, modify, or replace GIS products without notification. Designation of a road, trail or area for motor vehicle use by a particular class of vehicle under 36 CFR 212.51 is not represented on this map. It is the responsibility of the user to acquire the current Motor Vehicle Use Map (MVUM). The MVUM identifies those roads and trails designated for the motor vehicle use under 36 CFR 212.51 for the purpose of enforcing the prohibition at 36 CFR 261.13.



Map Creation Date - March 1, 2017  
Map Revision Date -

Sixth-level 12-digit HUC Subwatersheds

- Additional subwatersheds requested
- Wilderness
- Oklahoma Ranger District

Sheet 1 of 1

Additional Insect and Disease Landscape-Scale Area Designations Request

Oklahoma Ranger District

Le Flore & McCurtain Counties  
Oklahoma

U.S. Forest Service - R8  
Ouachita National Forest

For more information, contact the  
OklahomaRD at 111 S State Hwy 259A,  
Broken Bow or phone (580) 494-6402



**Table 1.** Sixth-level 12-digit Hydrologic Unit Code (HUC) Subwatersheds of Additional Areas

<b>12-digit HUC</b>	<b>Sixth-level subwatershed name</b>	<b>Acres</b>
111101050201	Big Creek	27599
111101050205	Cedar Creek	12293
111101050206	Lower Black Fork	24808
111101050304	Sugar Creek-Poteau River	17629
111101050305	Hontubby Creek-Poteau River	13722
111101050501	Coal Creek	20507
111101050502	Upper Holson Creek	19197
111101050504	Middle Holson Creek	18038
111101050505	Lower Holson Creek	14593
111101050506	Cedar Creek-Fourche Maline	14702
111101050507	Baker Branch-Fourche Maline	24105
111401050101	Pashubbe Creek-Kiamichi River	31562
111401050103	Big Cedar Creek-Kiamichi River	27749
111401050104	Sycamore Creek-Kiamichi River	20594
111401050105	Bohannon Creek-Kiamichi River	26265
111401050106	Frazier Creek	12332
111401050107	Buzzard Creek	12680
111401060305	Waterfall Creek	13913
111401070204	Coon Creek-East Fork Glover River	26008
111401070205	Pine Creek	12546
111401070206	Rock Creek-Glover River	18073
111401070207	Carter Creek	18873
111401070208	Cedar Creek	13286
111401070209	Beeman Creek-Glover River	23344
111401070210	Colbert Creek-Glover River	32380
111401070403	Stephens Branch-Lukfata Creek	20716
111401070405	Yashau Creek	20137
111401070406	Mud Creek-Rock Creek	30686
111401070407	Yanubbee Creek	21903
111401070409	Terrapin Creek-Little River	22883
111401080101	Mill Creek-Mountain Fork	29252
111401080105	Cedar Creek-Mountain Fork	25803
111401080202	Beech Creek-Cow Creek	30821
111401080205	Cucumber Creek	26123
111401080209	Roosevelt Creek-Mountain Fork	28213
111401080302	Middle Buffalo Creek	21839
111401080303	Lower Buffalo Creek	19830
111401080304	Hee Creek-Mountain Fork Creek	35555
111401080305	Holly Creek Mountain Fork	32212
111401080306	Broken Bow Lake Dam	30622
111401080307	Lick Creek-Mountain Fork	28470
111401080308	Crooked Creek-Mountain Fork	28868
111401090201	Robinson Creek	33087
111401090301	Rock Creek	28586