

Frequently Asked Questions

Where can I get a MVUM?

Maps are posted on this website at: <http://www.fs.usda.gov/main/nezperceclearwater/maps-pubs> and paper copies of these maps are available free of charge at the following locations:

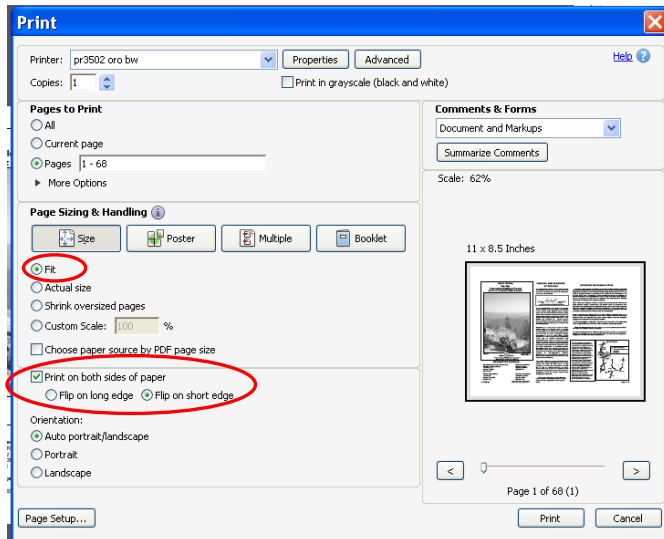
- Palouse Ranger District – Potlatch Office
- North Fork Ranger District – Orofino Office
- Lochsa-Powell Ranger District – Kooskia Office
- Lochsa-Powell Ranger District – Powell Office
- Lolo Pass Visitor Center – Lolo, MT
- Nez Perce-Clearwater National Forests – Orofino Office
- Nez Perce-Clearwater National Forests – Grangeville Office
- Nez Perce-Clearwater National Forests Supervisor’s Office – Kamiah Office

Other Nez Perce-Clearwater National Forests’ offices will have the free map as well. Other partners and distribution locations may be developed over time to help disseminate maps.

How do I print the MVUM?

A full-size version of the MVUM is 68 pages 11” x 17” and cannot be printed on conventional home printers. A full-size version can only be printed from a large format printer (11x17). Many local copy shops, engineering and survey businesses can print the map.

It is possible to print the MVUM on 8.5”x11” paper - some areas may be difficult to read, for those pages you will want to use the steps in ‘Other Printing Options’ to print only a portion of the page.

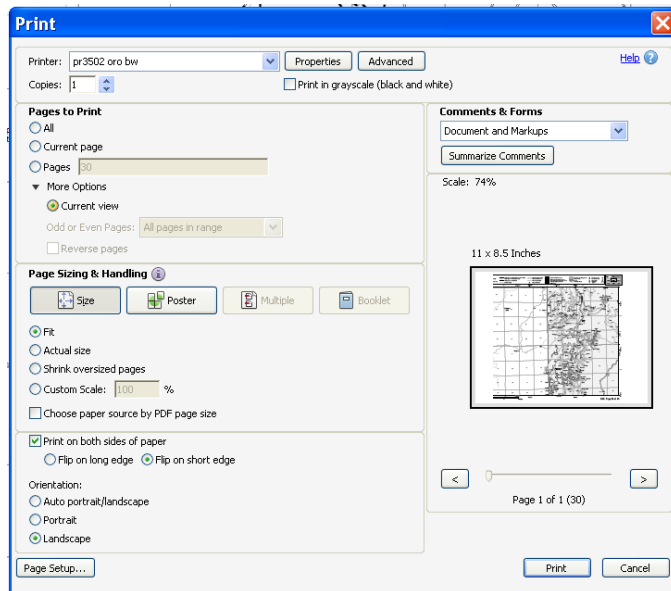


Select **Fit** under **Page Sizing and Handling**. Maps will be reduced to fit on the page.

If your printer is capable of 2 sided printing, select **print on both sides of paper** and **Flip on Short Edge**. Many printers without duplicating capabilities have settings that will allow you to print all uneven pages, when complete will prompt you to reinsert, and will print all even numbered pages on the back side. See your printer’s specifications for this process.

Other Printing Options

To increase readability, a portion of the MVUM page can be printed on 8 ½” x 11” paper using home printers. With PDF viewers/readers, such as Adobe Acrobat Reader, you can use the “Print Current View” function to print the view on your screen. It is recommended that the legend box be printed to aid in interpretation of the MVUM.



Zoom to area of interest
 Select Print option
 Under More Options select current view.
 Print

Printing specific Areas of the MVUM

You can print all of the MVUM for the entire Clearwater portion of the Nez Perce-Clearwater National Forests or just the area of interest:

- Print Map Pages 8 – 20 for the Palouse Area, Reference Pages 1 - 4
- Print Map Pages 21 - 39 for the North Fork Area, Reference Pages 1 – 3 and 5
- Print Map Pages 40 – 53 for the Lochsa Area, Reference Pages 1 - 3 and 6
- Print Map Pages 54 – 68 for the Powell Area, Reference Pages 1 - 3 and 7

Please remember to print the Reference pages which include Purpose and Contents, Operator Responsibilities, Legend Explanations, Special Definitions, Dispersed Camping, Prohibitions and Tabular listings of Special Designations for Roads and Trails by area.

What does a MVUM show me?

The map displays all National Forest System roads and trails allowing public motor vehicle use. This is commonly referred to as designation. It also states that driving off designated roads and trails is prohibited (36 CFR 261.13).

Motorized use includes but is not limited to Motorcycles, ATVs, and 4-wheel drive vehicles.

Designation details include vehicle class, time of year, and motorized access for the purpose of dispersed camping (camping in locations other than developed campgrounds).

Limited motor vehicle access may occur on routes not shown on the MVUM for the purpose of administrative access by Forest Service personnel; for fire and law enforcement; for emergency purposes; and by persons authorized by a written special use permit or contract from the Forest Service.

Does the MVUM also show non-motorized trails and over-snow vehicle uses?

No, a visitor map or snowmobile map will provide information on over-snow and non-motorized routes, including mechanized trails, hiking, and horse trails. Over-snow vehicle use is exempted from designations on the MVUM. Regardless of what other maps (including the Forest Visitor Map) may show as motorized routes, only those routes identified on the MVUM are designated as open to public motorized use and legal for public motorized travel.