

UNITED STATES DEPARTMENT OF AGRICULTURE
FOREST SERVICE

HUMBOLDT-TOIYABE NATIONAL FOREST

OCCUPANCY AND USE

A. PROHIBITIONS

Pursuant to 36 CFR 261.50(a) and (b), the following acts are prohibited on the area, roads, and trails as described in this Order, within the Spring Mountains National Recreation Area of the Humboldt-Toiyabe National Forest until further notice.

1. Throughout the Spring Mountains National Recreation Area, possessing, storing, or transporting any of the following butterfly species in any life stage (egg, larva, pupa, or adult), including individuals or parts thereof: Mount Charleston blue (*Plebejus shasta charlestonensis*), Spring Mountains acastus checkerspot (*Chlosyne acastus robusta*), Spring Mountains dark blue (*Euphilotes ancilla purpura* and *Euphilotes ancilla cryptica*), Morand's checkerspot (*Euphydryas anicia morandi*). [36 CFR 261.58(s)]
2. Possessing, storing, or transporting any butterfly species in any life stage (egg, larva, pupa, or adult), including individuals or parts thereof, in the following areas:
 - Upper Lee Canyon from the Old Mill and Foxtail road turnoffs to the edge of the canyon, from Highway 156 to the canyon rim
 - Two hundred meters on each side of the Bonanza Trail from the Bristlecone Junction to the base of McFarland Peak
 - Two hundred meters on either side of the South Loop Trail from Griffith Peak to the Charleston Peak and the ridge to Lee Canyon [36 CFR 261.58(s)]

B. EXEMPTIONS

Pursuant to 36 CFR 261.50(e), each of the following persons are exempt from this order:

1. Persons with a permit specifically exempting them from the effect of this Order;
2. Any Federal, State, or local officer, or member of a organized rescue or fire fighting force in the performance of an official duty.

C. AREA DESCRIBED

Section A.1 of this Order applies to all National Forest Lands within the Spring Mountains National Recreation Area of the Humboldt-Toiyabe National Forest (Exhibit B.1). Section A.2 of this Order applies to the areas specified in that section and depicted in Exhibit B.2.

D. PURPOSE

The purpose of this order is to protect sensitive butterfly species within the Spring Mountains National Recreation Area.

E. IMPLEMENTATION

1. Exhibit A, Photos, and Exhibit B, Maps, are attached and incorporated into this order.
2. This Special Order implementing Occupancy and Use Restrictions is effective at 12:01 A.M. on August 20, 2013, and shall remain in effect until rescinded.

Violation of these prohibitions is punishable as a class B misdemeanor, by a fine of not more than \$5000.00 for an individual or \$10,000.00 for an organization and/or imprisonment of not more than 6 months [Title 16 USC 551, 18 USC 3571(b)(6), Title 18 USC 3581 (b)(7)].

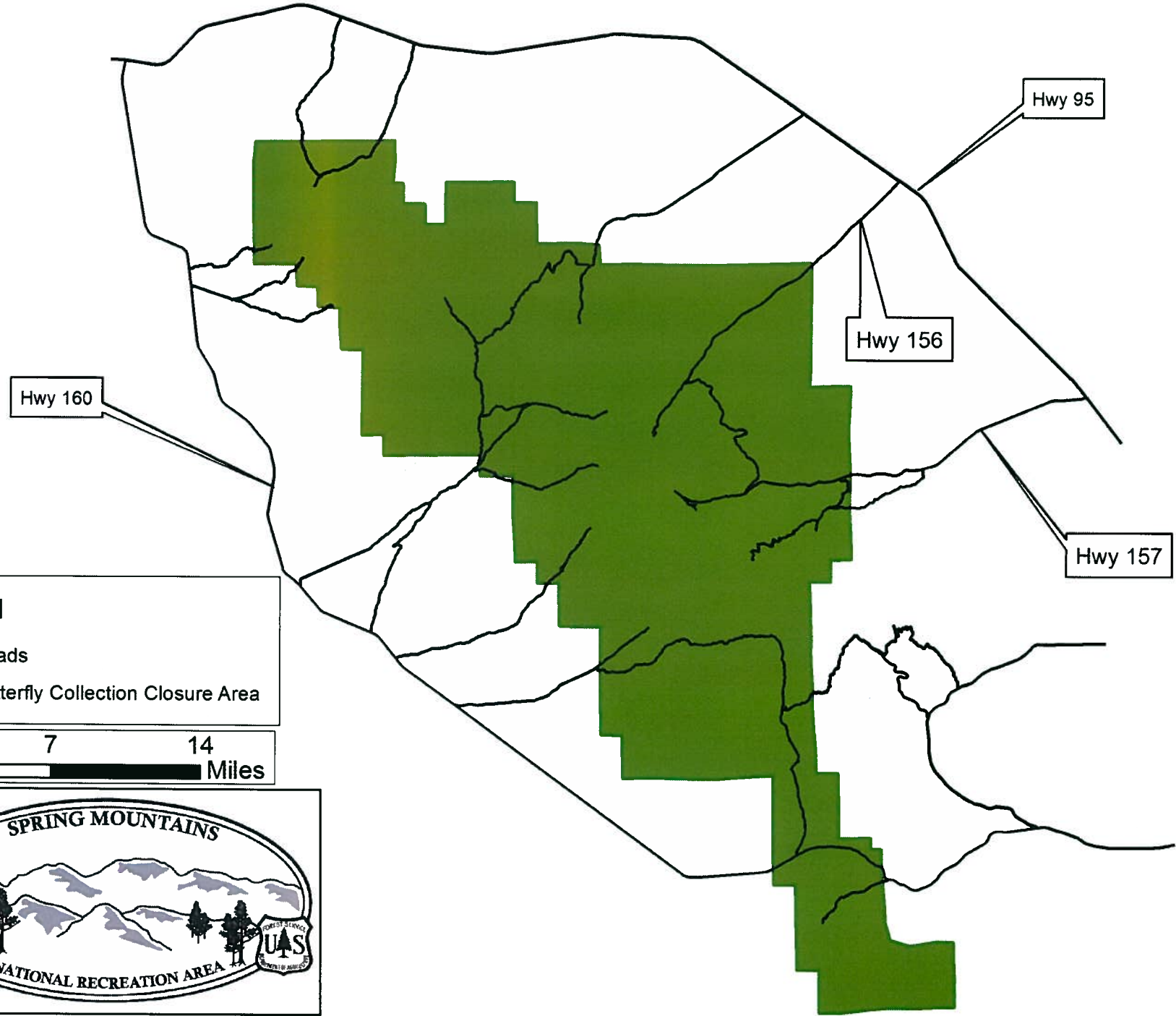
Done at Sparks, Nevada this 19TH day of August, 2013.



William Dunkelberger
Forest Supervisor, Humboldt-Toiyabe National Forest

ORDER NO. 04-17-12-15

Closure Order 04-17-13-20 Exhibit B1 Closure Area for Butterfly Protection

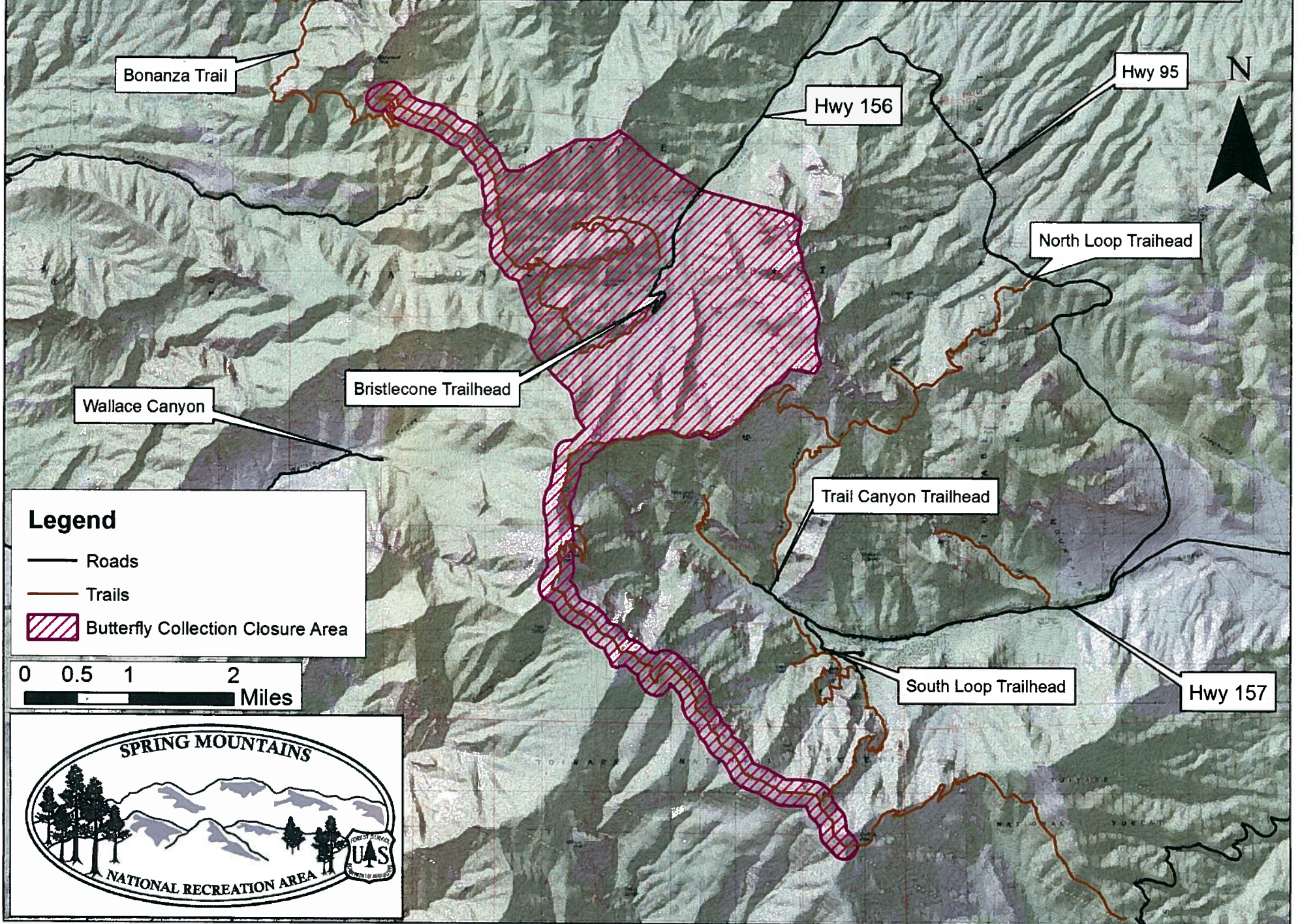


Legend

- Roads
- Butterfly Collection Closure Area



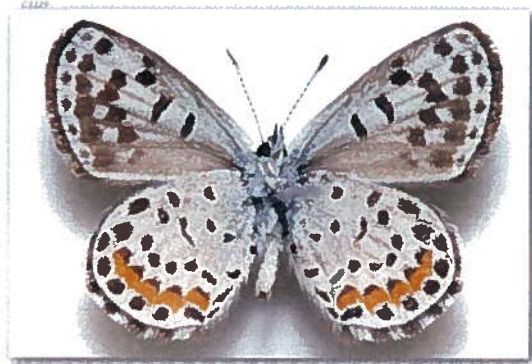
Closure Order 04-17-13-20 Exhibit B2 Closure Area for Butterfly Protection



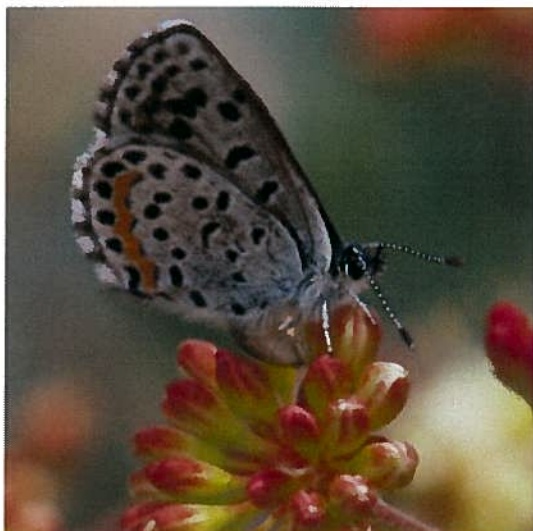
Spring Mountains dark blue

Euphilotes ancilla purpura (= *E. enoptes cryptica*)

Male



Female



Morand's checkerspot

Euphydryas anicia morandi



© 2009 Kim Davis, Mike Stangeland, & Andrew Warren * <http://www.butterfliesofamerica.com>



© 2009 Kim Davis, Mike Stangeland, & Andrew Warren * <http://www.butterfliesofamerica.com>



© 2009 Kim Davis, Mike Stangeland, & Andrew Warren * <http://www.butterfliesofamerica.com>



© 2009 Kim Davis, Mike Stangeland, & Andrew Warren * <http://www.butterfliesofamerica.com>



Mt. Charleston Blue

Plebejus shasta charlestonensis



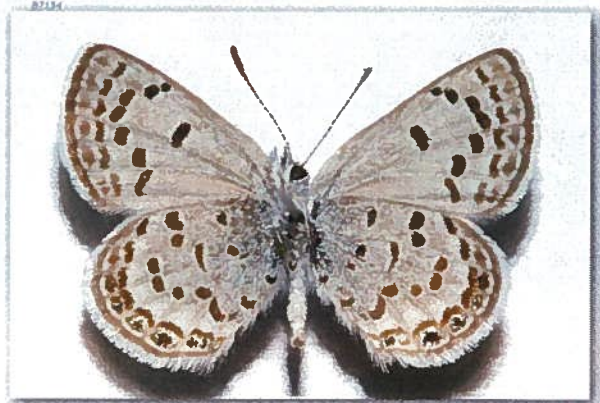
Mt. Charleston Blue

Plebejus shasta charlestonensis

Male



© 2008 Jim P. Brock



© 2008 Jim P. Brock

Female



© 2008 Jim P. Brock



© 2008 Jim P. Brock

Spring Mountains acastus checkerspot

Chlosyne acastus robusta



© 2009 Jim P. Brock



© 2009 Jim P. Brock

