

Swiss Needle Cast Special Survey

Background: Annual aerial detection surveys for Swiss needle cast (SNC) have been conducted in Oregon since the 1990's and have been conducted in Washington as well. This is the first attempt to survey for SNC from the air in California. The disease has been reported in private timberlands around Arcata in the last few years. Funding for this survey came from the Swiss Needle Cast Cooperative at OSU.

Objective: Detect and map areas with visible SNC on the Humboldt/Del Norte Coast of California. Mapped areas will be passed on to cooperators for verification of the disease.

Surveyors: Z. Heath, J. Moore, B. Noyes.

Dates: May 14th, 2013.

Methodology: Areas of discolored Douglas-fir were mapped visually by surveyors using digital aerial sketch-mapping systems flying in a light fixed-wing aircraft approximately 1,000 feet above ground level. Photos of symptomatic trees were taken as well.

Details:

- 232 miles were flown, covering about 600,000 acres in Humboldt and Del Norte Counties. See Figure 1.
- Very few areas of Douglas-fir discoloration was mapped. About nine discrete areas totaling 363 acres were mapped between Eureka and Crescent City. These areas appeared a pale yellow color and may be the signature of poor site conditions rather than SNC. See Figures 2 & 3.

Figure 1. Flown area and mapped tree discoloration

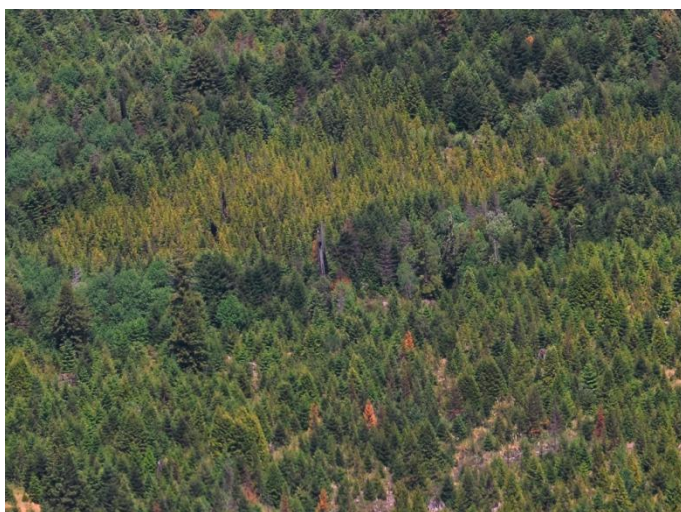
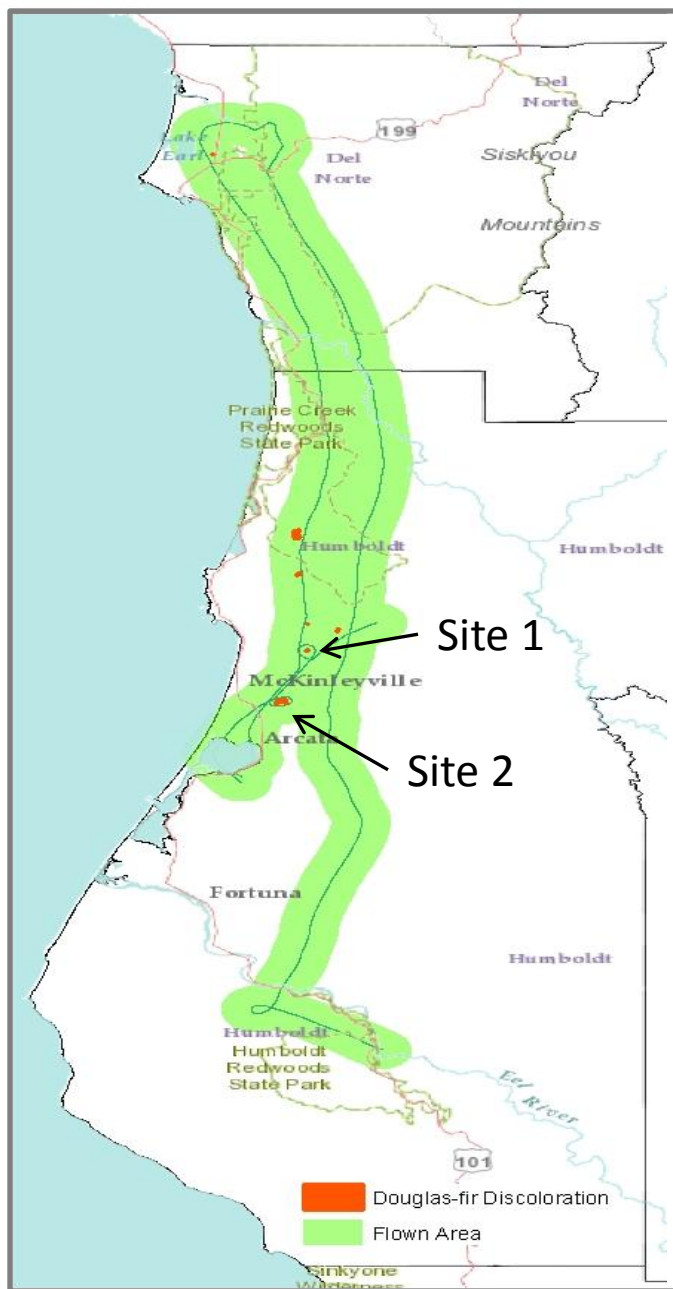


Figure 2. Site 1 on the map.

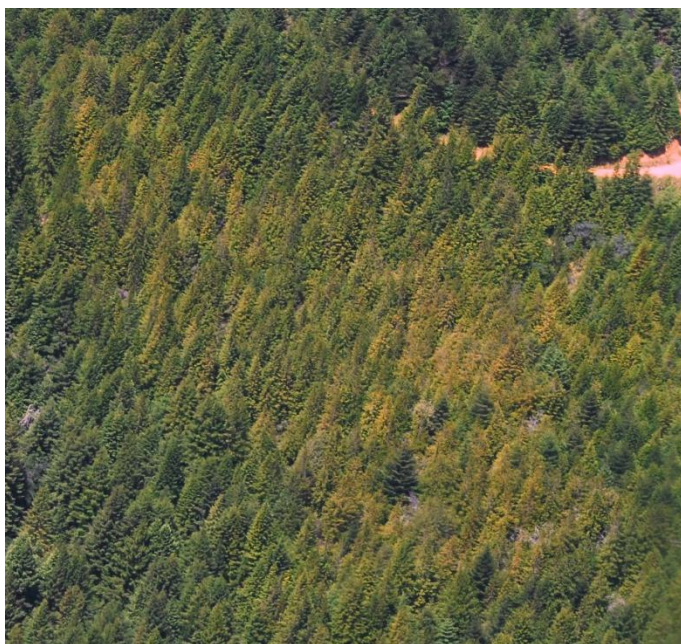


Figure 3. Site 2 on the map.

Direct questions pertaining to this report to Zachary Heath (email: zheath@fs.fed.us phone: 530-759-1751). Report Date May 15th, 2013.

The U.S. Department of Agriculture (USDA) prohibits discrimination in all its programs and activities on the basis of race, color, national origin, age, disability, and where applicable, sex, marital status, familial status, parental status, religion, sexual orientation, genetic information, political beliefs, reprisal, or because all or part of an individual's income is derived from any public assistance program. (Not all prohibited bases apply to all programs.) Persons with disabilities who require alternative means for communication of program information (Braille, large print, audiotape, etc.) should contact USDA's TARGET Center at (202) 720-2600 (voice and TDD).

To file a complaint of discrimination write to USDA, Director, Office of Civil Rights, 1400 Independence Ave, S.W., Washington, D.C. 20250-9410 or call (800) 795-3272 (voice) or (202) 720-6382 (TDD). USDA is an equal opportunity provider and employer.