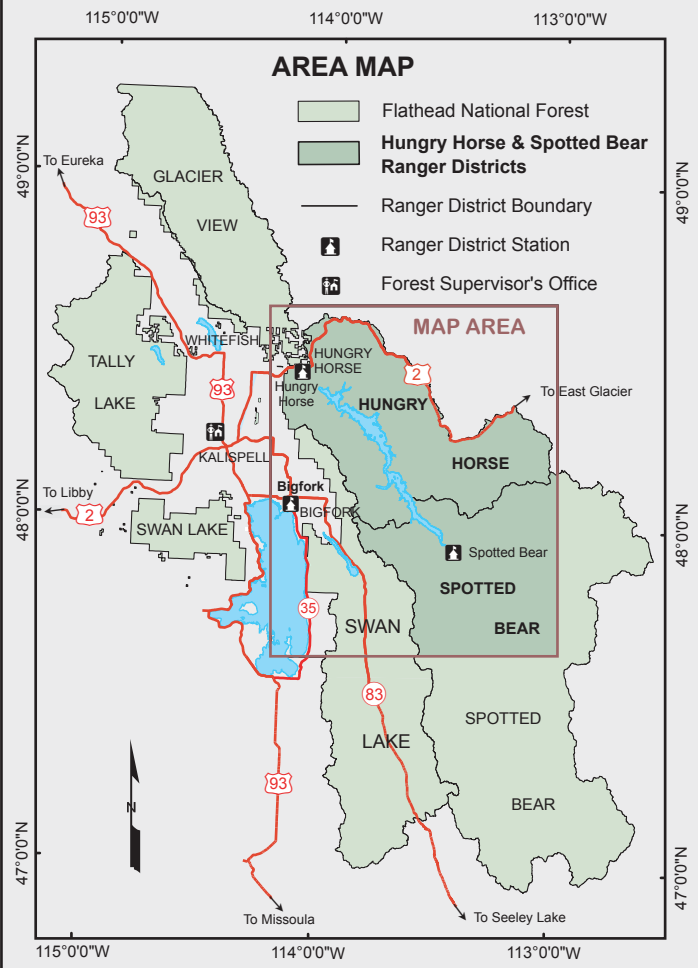
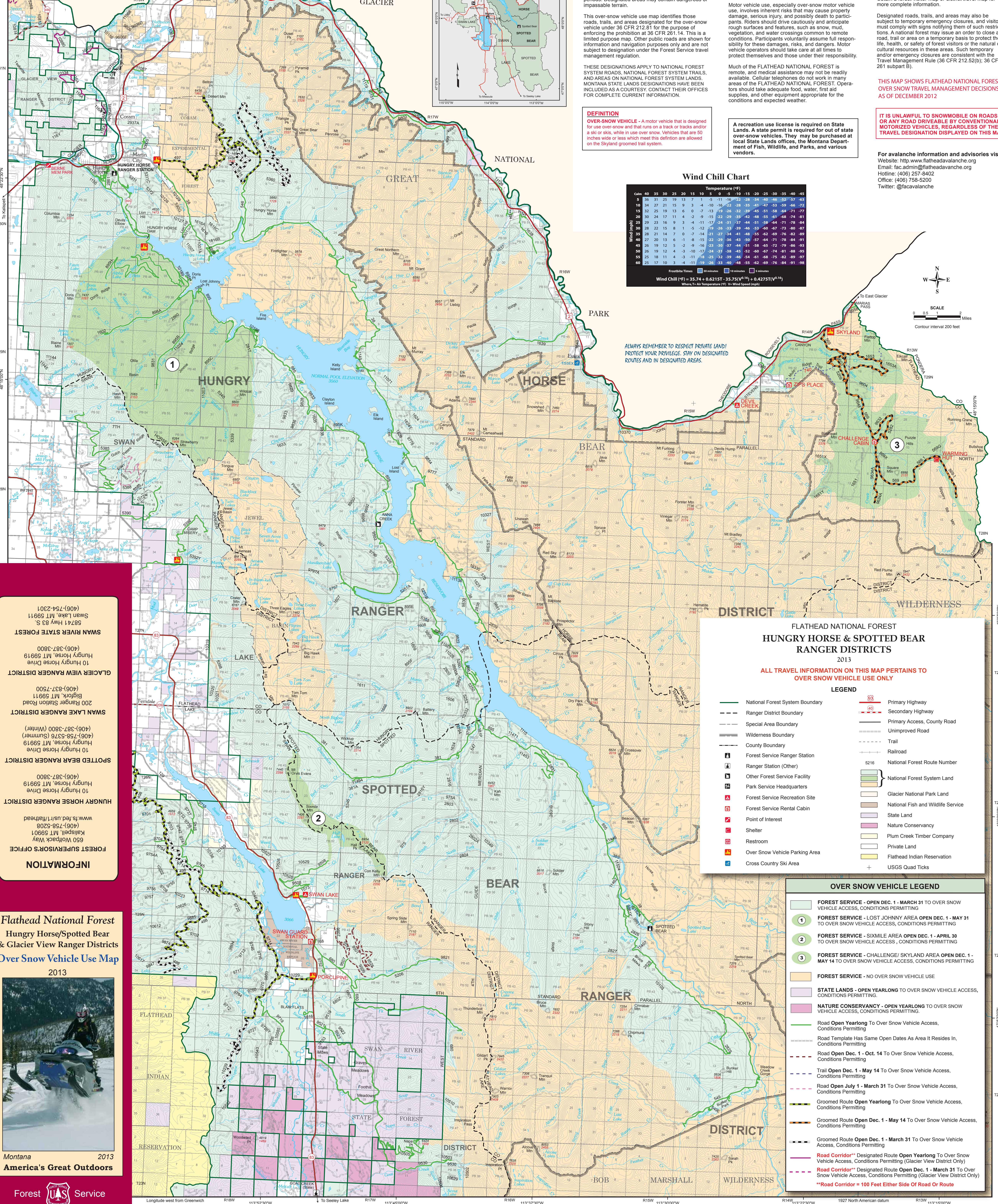


PURPOSE AND CONTENTS OF THIS MAP

OPERATOR RESPONSIBILITIES

PROHIBITIONS

The U.S. Department of Agriculture (USDA) prohibits discrimination in all its programs and activities on the basis of race, color, national origin, sex, disability, and where applicable, age, marital status, familial status, parental status, religion, sexual orientation, genetic information, public benefit, receipt, or because of all or part of an individual's ancestry, national origin, or ethnicity.



This map shows National Forest System roads, National Forest System trails, and areas on National Forest System lands in the Hungry Horse & Spotted Bear Ranger Districts and adjacent areas where use by over-snow vehicles is allowed, restricted, or prohibited pursuant to 36 CFR 212.81.

Designation of a road, trail, or area for over-snow motor vehicle use should not be interpreted as encouraging or inviting use, or to imply that the road, trail, or area is passable, or safe for travel.

This over-snow vehicle use map identifies those roads, trails, and areas designated for the over-snow vehicle under 36 CFR 212.81 for the purpose of enforcing the prohibition at 36 CFR 261.14. This is a limited purpose map.

THESE DESIGNATIONS APPLY TO NATIONAL FOREST SYSTEM ROADS, NATIONAL FOREST SYSTEM TRAILS, AND AREAS ON NATIONAL FOREST SYSTEM LANDS. MONTANA STATE LANDS DESIGNATIONS HAVE BEEN INCLUDED AS A COURTESY. CONTACT THEIR OFFICES FOR COMPLETE CURRENT INFORMATION.

DEFINITION OVER-SNOW VEHICLE - A motor vehicle that is designed for use over-snow and that runs on a track or tracks and/or a ski or skis, while in use over snow. Vehicles that are 50 inches wide or less which meet this definition are allowed on the Skyland groomed trail system.

Operating a motor vehicle on National Forest System roads, National Forest System trails, and in areas on National Forest System lands carries a greater responsibility than operating that vehicle in a city or other developed setting. Not only must the vehicle operators know and follow all applicable traffic laws, but they need to show concern for the environment as well as other forest users.

Motor vehicle use, especially over-snow motor vehicle use, involves inherent risks that may cause property damage, serious injury, and possibly death to participants. Riders should drive cautiously and anticipate rough surfaces and features, such as snow, mud, vegetation, and water crossings common to remote conditions.

Much of the FLATHEAD NATIONAL FOREST is remote, and medical assistance may not be readily available. Cellular telephones do not work in many areas of the FLATHEAD NATIONAL FOREST.

It is prohibited to possess or operate an over-snow motor vehicle on the FLATHEAD NATIONAL FOREST other than in accordance with these designations (36 CFR 261.14), as per the Hungry Horse & Spotted Bear Over-Snow Vehicle Use Map.

Violations of 36 CFR 261.14 are subject to a fine of up to \$5,000 or imprisonment for up to 6 months or both (18 U.S.C. 3571(e)). This prohibition applies regardless of the presence or absence of signs.

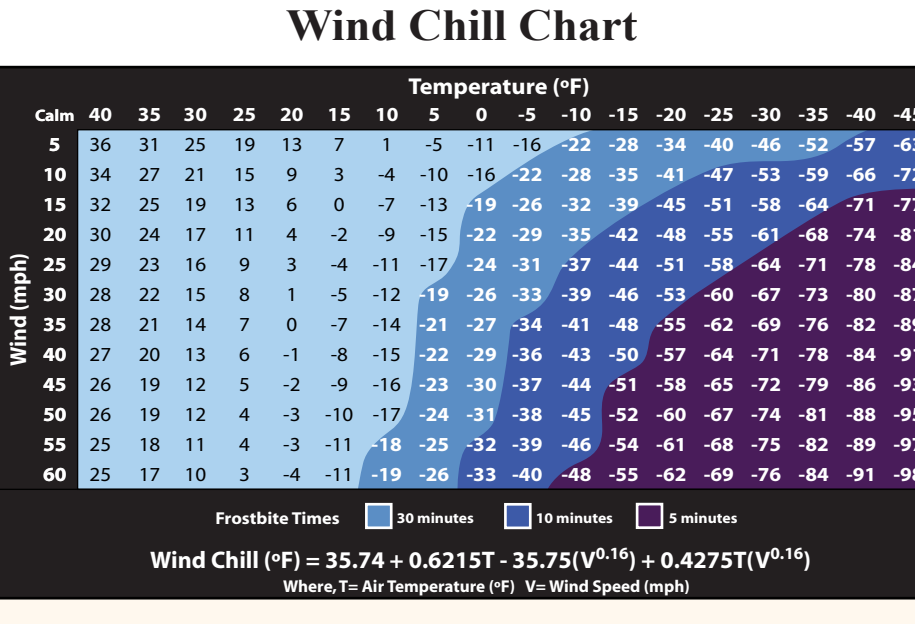
This map does not display non-motorized uses and attractions on the FLATHEAD NATIONAL FOREST. Obtain a forest visitor map or district travel map for more complete information.

Designated roads, trails, and areas may also be subject to temporary emergency closures, and visitors must comply with signs notifying them of such restrictions. A national forest may issue an order to close a road, trail or area on a temporary basis to protect the life, health, or safety of forest visitors or the natural or cultural resources in these areas.

THIS MAP SHOWS FLATHEAD NATIONAL FOREST OVER-SNOW TRAVEL MANAGEMENT DECISIONS AS OF DECEMBER 2012

IT IS UNLAWFUL TO SNOWMOBILE ON ROADS OR ANY ROAD DRIVEABLE BY CONVENTIONAL MOTORIZED VEHICLES, REGARDLESS OF THE TRAVEL DESIGNATION DISPLAYED ON THIS MAP.

For avalanche information and advisories visit: Website: http://www.flatheadavalanche.org Email: fac.admin@flatheadavalanche.org



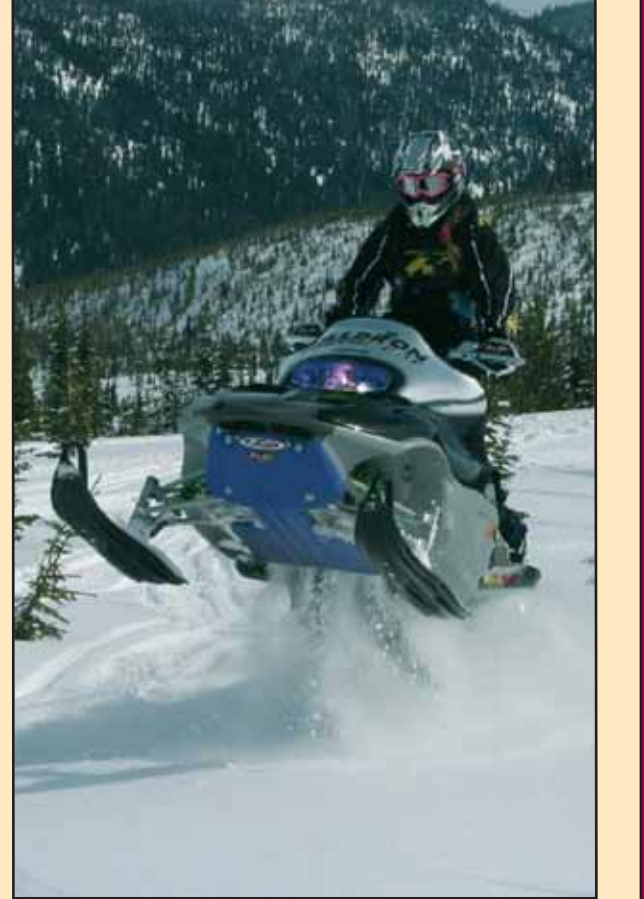
Wind Chill (°F) = 35.74 + 0.6215T - 35.75(V^0.16) + 0.4275(TV^1.16) Where: T = Air Temperature (°F), V = Wind Speed (mph)

Forecast Times: 30 minutes, 10 minutes, 5 minutes

ALWAYS REMEMBER TO RESPECT PRIVATE LAND! PROTECT YOUR PRIVILEGE. STAY ON DESIGNATED ROUTES AND IN DESIGNATED AREAS.

- SWAN RIVER STATE FOREST (406)-754-2301
GLACIER VIEW RANGER DISTRICT (406)-387-3800
SWAN LAKE RANGER DISTRICT (406)-387-3800
SPOTTED BEAR RANGER DISTRICT (406)-387-3800
HUNGRY HORSE RANGER DISTRICT (406)-387-3800
FOREST SUPERVISOR'S OFFICE (406)-758-5200

Flathead National Forest Hungry Horse/Spotted Bear & Glacier View Ranger Districts Over Snow Vehicle Use Map 2013



Montana 2013 America's Great Outdoors

LEGEND, OVER SNOW VEHICLE LEGEND, and INFORMATION sections detailing map symbols, travel permissions, and contact info.