

**UNITED STATES DEPARTMENT OF AGRICULTURE
GEORGE WASHINGTON & JEFFERSON NATIONAL FORESTS**

Order Number 26-08-15

**OCCUPANCY AND USE OF THE SOUTH PEDLAR ATV TRAIL SYSTEM
AND ACCESS ROADS**

Pursuant to the provisions of 16 U.S.C. § 551 and 36 C.F.R. § 261.50, it is hereby ordered that the following prohibitions apply to the Forest Roads that provide access to the South Pedlar ATV Trail System, and to the trails and trailheads that comprise the South Pedlar ATV Trail System. The roads, trails, and trailheads subject to this order (listed below) are located on the Glenwood and Pedlar Ranger Districts and are identified on the attached map:

Forest Roads:

1. Forest Road #319; and
2. Forest Road #564.

South Pedlar ATV Trail System:

A. Trails:

1. #800, South Pedlar Trail;
2. #801, Rattlesnake Trail;
3. #802, Terrapin Trail;
4. #803, Lone Mountain Trail;
5. #804, Lasso Trail;
6. #805, Otter Trail; and
7. #806, Piney Trail.

B. Trailheads:

1. Rattlesnake Trailhead at the end of Forest Road # 564; and
2. Terrapin Trailhead at the end of Forest Road #319.

Prohibitions are as follows:

1. Operating a motor vehicle that exceeds a noise limit of 99 dBA at 20 inches at test RPMs.
36CFR 261.55(d)
2. Operating a motor vehicle greater than 50 inches wide and more than 1,500 pounds unloaded dry weight. **36CFR 261.55(d)**
3. Operating a motor vehicle by any person under the age of 16. **Exception:** Children between the ages of 12 and 16 may operate ATV's or motorbikes, if accompanied by an adult and on an appropriately sized vehicle, per Virginia State Law. **36 CFR 261.55(d)**
4. Possessing or consuming a beverage, which is defined as an alcoholic beverage by State Law, on any part of the ATV Trail System, trailheads, or Forest Roads #319 and #564.
36CFR 261.58(bb)
5. Camping in and around either trailhead and anywhere within the South Pedlar ATV Trail System area. **36CFR 261.58(c)**

6. Using a saddle, pack, or draft animal. **36CFR 261.55(e)**

DEFINITIONS: As used herein, the following terms and definitions apply:

"Accompanied" means to go along with; to attend as a companion or associate; exercising supervision over the minor operator and near enough to render advice and assistance. The adult maintains close visual and verbal contact with, provides adequate direction to, and can immediately assume control.

Pursuant to 36 C.F.R. § 261.50(e) the following persons are exempt from all prohibitions set forth herein:

1. Any Federal, State, or Local Officer or member of an organized rescue or firefighting force engaged in the performance of an official duty.

This Order shall remain in effect until amended or rescinded by applicable authority.

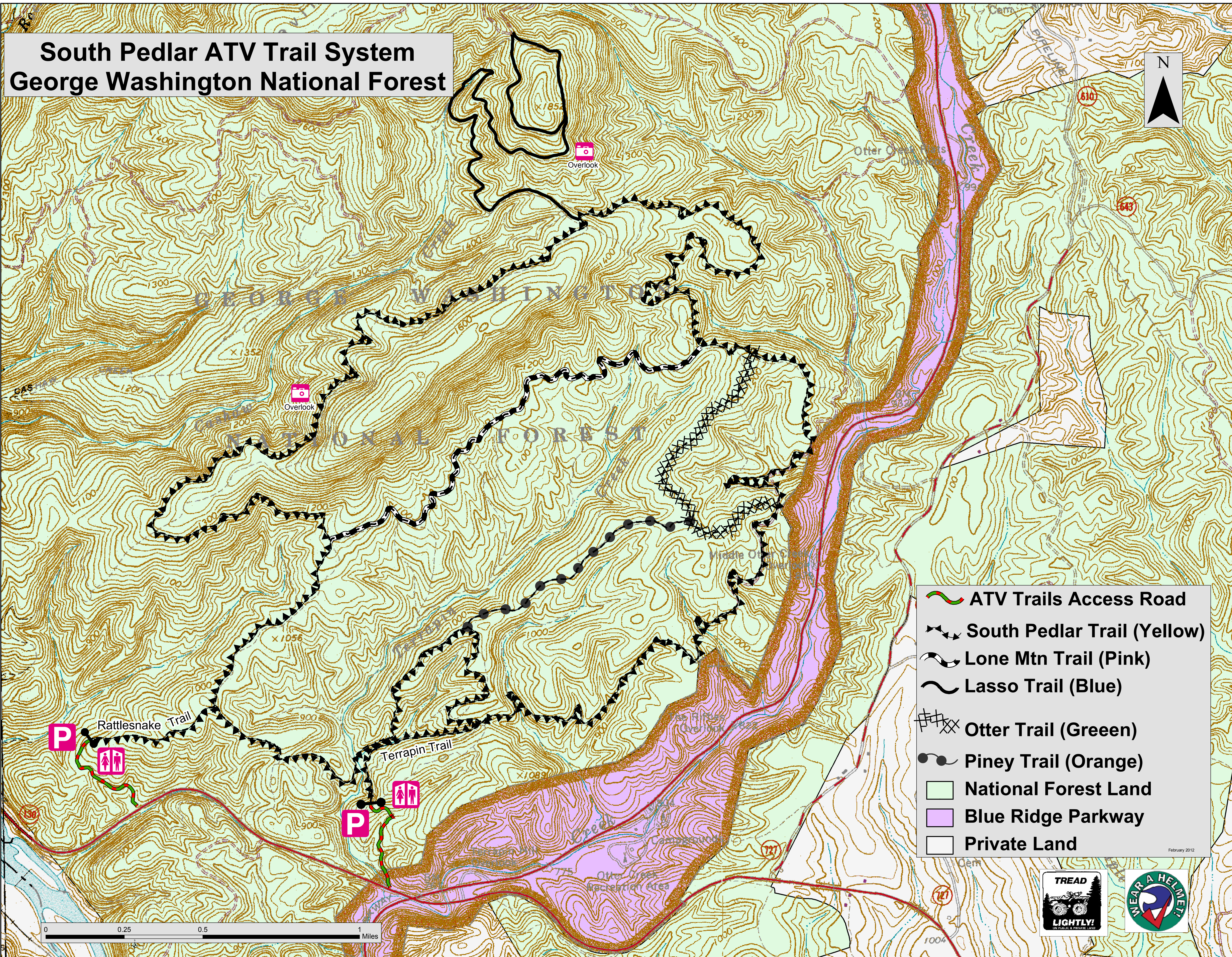
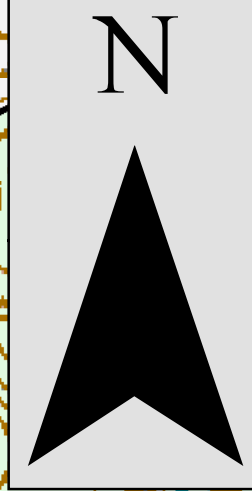
Executed in Roanoke, Virginia this 24th day of July, 2015.



H. THOMAS SPEAKS, Jr.
Forest Supervisor

Violations of the above prohibitions are punishable by a fine of not more than \$5,000 or imprisonment for not more than 6 months or both, Title 16 U.S.C. § 551; 18 U.S.C. §§ 3559, 3571.

South Pedlar ATV Trail System George Washington National Forest



- ATV Trails Access Road
- South Pedlar Trail (Yellow)
- Lone Mtn Trail (Pink)
- Lasso Trail (Blue)
- Otter Trail (Green)
- Piney Trail (Orange)
- National Forest Land
- Blue Ridge Parkway
- Private Land

0 0.25 0.5 1 Miles

February 2012

