



Hunting Opportunities



Shawnee National Forest

50 HWY 145 South, Harrisburg, IL 62946

(618) 253-7114

2014



The Shawnee National Forest, USDA Forest Service is the largest public landowner in the state. This fact, combined with its diversity of habitats, offers sports enthusiasts a range of hunting opportunities. Each year thousands of hunters are attracted to the forest to hunt everything from trophy bucks to upland game and waterfowl. Private land is interspersed with federal and state land. It is the hunter's responsibility to make sure they are on public land. Maps showing national forest land ownership are available for purchase at Shawnee National Forest offices or through the mail using the Forest Map Order Form.

The State of Illinois sets hunting seasons and regulations. These rules are applicable to Shawnee National Forest lands. To hunt on the Shawnee National Forest you must have a valid Illinois hunting license. If hunting migratory waterfowl, hunters must have a federal and state migratory waterfowl stamp, which are usually available where you buy a hunting license. To hunt deer or turkey, hunters must obtain, from the Illinois Department of Natural Resources (IDNR), a deer or turkey permit in advance.

Refer to the *Illinois Digest of Hunting and Trapping Regulations* guide for specific information on hunting seasons and regulations. This free guide is available at any IL State Park office or by contacting the Illinois Dept. of Natural Resources, One Resource Way, Springfield, Illinois, 62702-1271, Telephone: 217-782-6384, or on-line at www.dnr.illinois.gov.

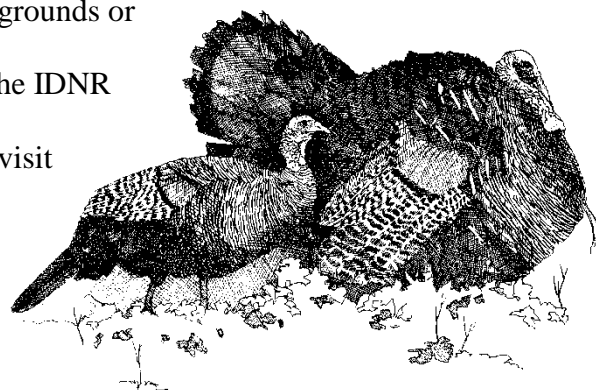
Much of the Shawnee National Forest is managed for wildlife habitat as part of its multiple-use management program. Mowing, disking, or burning maintains wildlife openings. These openings produce more of the "edge effect," supplying food in the openings and shelter in the woods. Roads leading to openings and waterholes are maintained to provide hunter access. Private croplands are interspersed with forested and shrub-covered areas on federal lands.

Please abide by the following regulations and safety reminders to ensure the enjoyment and safety of all Shawnee National Forest visitors

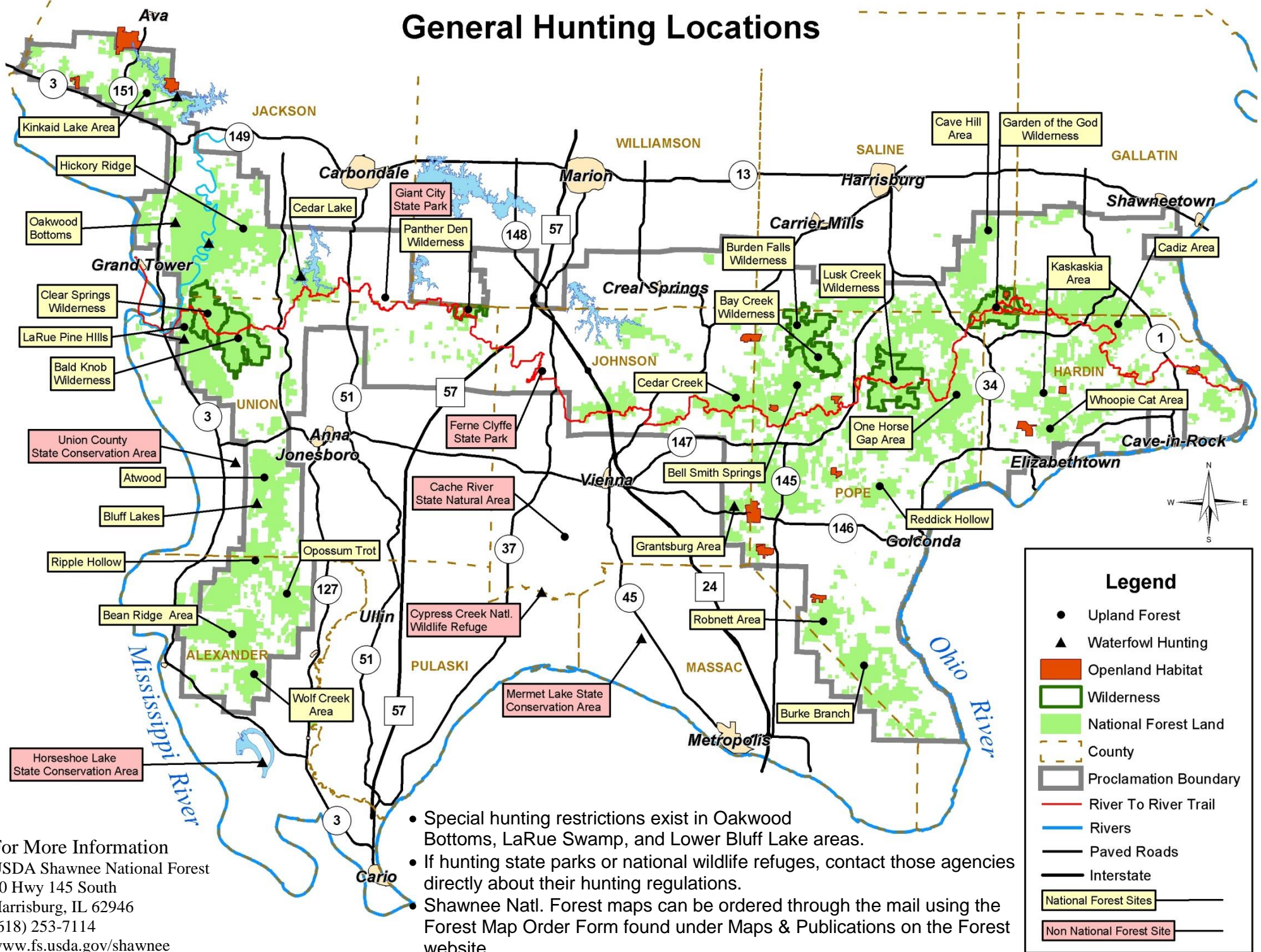
- Hunting activities are prohibited in or within 150 yards of any building, campsite, developed recreation site, or occupied area, pursuant to 36 CFR261.10 (d).
- All firearms and bows with arrows should be cased and unloaded while in a recreation area or other public areas.
- Construction of or use of permanent deer stands is not permitted on national forest lands, pursuant to 36 CFR261.58 (v).
- Use of motorized vehicles off Forest development roads is prohibited within the Shawnee National Forest, pursuant to 36 CFR261.56.
- Dispersed camping is allowed ¼ mile outside developed campgrounds or developed picnic grounds, pursuant to 36 CFR261.58 (e).
- Proper safety precautions should be adhered to as outlined in the IDNR hunting digest (i.e., blaze orange clothing, etc.).
- Please practice the Leave No Trace principles. To learn more visit www.LNT.org.

For more information:

www.fs.usda.gov/activity/shawnee/recreation/hunting



General Hunting Locations



For More Information
 USDA Shawnee National Forest
 50 Hwy 145 South
 Harrisburg, IL 62946
 (618) 253-7114
www.fs.usda.gov/shawnee

- Special hunting restrictions exist in Oakwood Bottoms, LaRue Swamp, and Lower Bluff Lake areas.
- If hunting state parks or national wildlife refuges, contact those agencies directly about their hunting regulations.
- Shawnee Natl. Forest maps can be ordered through the mail using the Forest Map Order Form found under Maps & Publications on the Forest website.