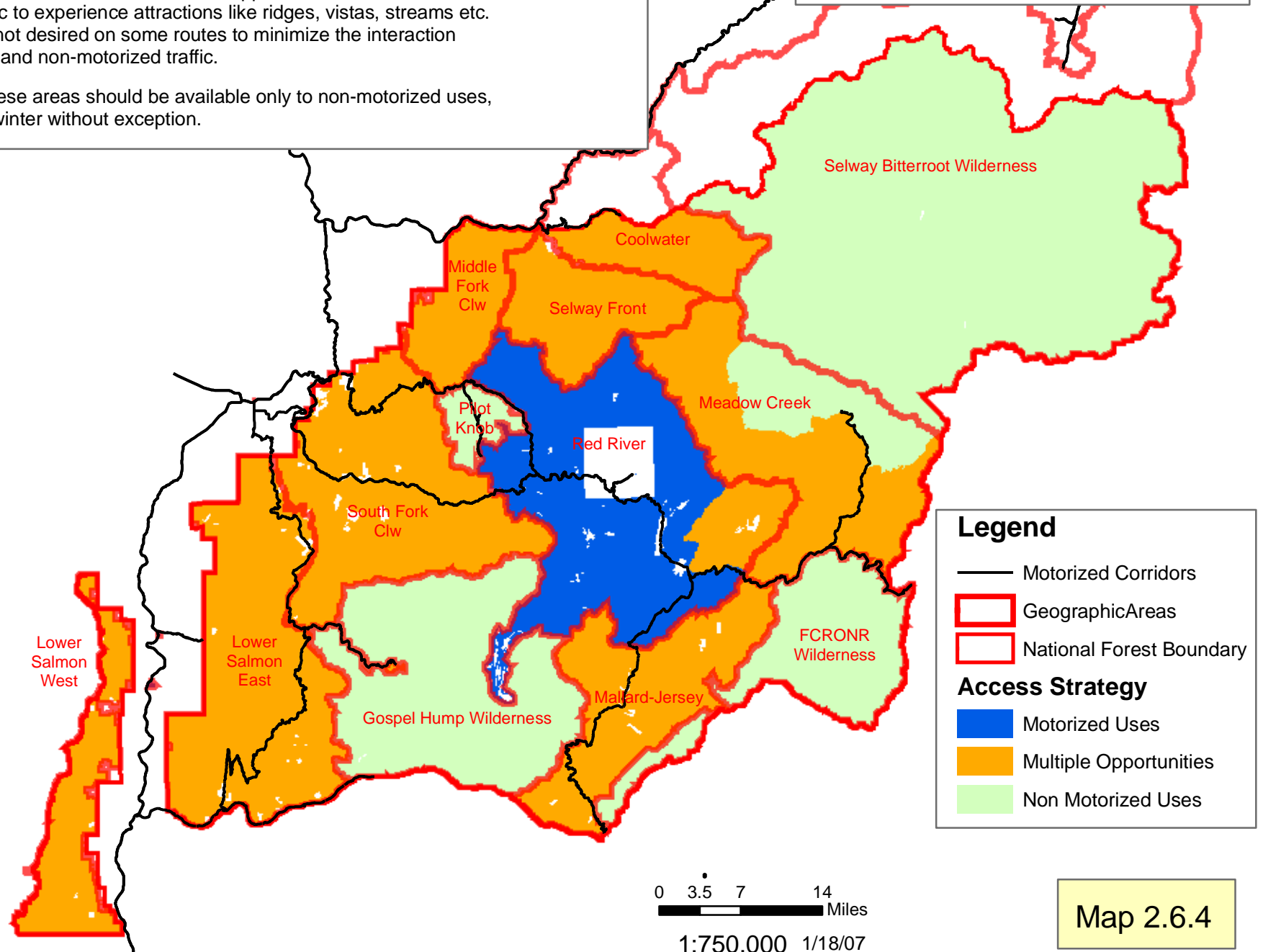


Motorized Uses - The mode of travel is motorized or non-motorized with an emphasis on motorized. Non-motorized users can expect to encounter motorized traffic. There may be seasonal or yearlong restrictions to motorized travel to meet resource needs, but the roads involved are expected to serve motorized traffic at some point.

Multiple Opportunities-There should be similar opportunities for both motorized and non-motorized traffic to experience attractions like ridges, vistas, streams etc. Motorized traffic is not desired on some routes to minimize the interaction between motorized and non-motorized traffic.

Non-Motorized- These areas should be available only to non-motorized uses, both summer and winter without exception.

Nez Perce National Forest Motorized and Non-motorized Recreation Uses



Legend

- Motorized Corridors
- ▭ Geographic Areas
- ▭ National Forest Boundary

Access Strategy

- ▭ Motorized Uses
- ▭ Multiple Opportunities
- ▭ Non Motorized Uses

0 3.5 7 14 Miles

1:750,000 1/18/07

Map 2.6.4