

# Sandstone Multiple- Use Trail



If you have questions, please call us at:

Kisatchie Ranger District  
229 Dogwood Park Road  
Provençal, Louisiana 71468  
(318) 472-1840  
Kisatchie National Forest  
2500 Shreveport Highway  
Pineville, LA 71360  
(318) 473-7160 TTY: (318) 473-7254

24 hr contact line  
[www.fs.fed.us/r8/kisatchie](http://www.fs.fed.us/r8/kisatchie)  
OHV hotline: 1-866-830-6467



## TRAIL DESCRIPTION & LOCATION

Welcome to the Kisatchie Ranger District! We hope you will enjoy your visit to the Kisatchie National Forest. Off-Road Vehicle (ORV) use is one of the many recreation opportunities offered on the Kisatchie District. We have established approximately 36 miles of designated ORV trail available for an enjoyable experience for all ORV users on the Kisatchie Ranger District.

Forty miles north of Alexandria, lies over 36 miles of Sandstone Multiple-Use Trail. This trail loops through pine upland forest and sandy hardwood bottoms, including sandstone bluffs and picturesque vistas. The trail consists of two connected loops that vary in distance, and difficulty level.

- North Loop 16 miles
- South Loop 15 miles
- Cut-Across Trail 5 miles

Along with ORV use, the Sandstone Multiple-Use Trail is enjoyed by hikers, mountain bikes, and horseback riders. The trail loops are marked with green markings, and the primary trailhead/ staging area is the Lotus Camp Area. From Alexandria, take Interstate Hwy 49 to exit 119 at Derry, LA and turn left (South) onto LA Hwy 119 and travel approximately 5 miles to FH 59 (Longleaf Scenic Highway) and turn right. Go twelve miles to the Recreation Area. Additional staging areas are the Cane Camp (horses only) and Corral Camp for ORV Camping. See the map for these locations.

There is also a new parking lot at the end of 395.

## GENERAL VISITOR INFORMATION

Visitors to the Kisatchie National Forest, are asked to follow certain rules designated to protect the natural environment, to ensure the health and safety of visitors, and to promote pleasant and rewarding outdoor recreation experiences for all. Please become familiar with the posted Code of Federal Regulations and Forest Supervisor's Orders governing the use of ORV's on National Forest lands. These regulations and orders are enforced and are punishable by law if violated.

Jeeps and 4-wheel drive vehicles are restricted to open roads and must be properly licensed for road use. Use of these vehicles on closed roads, in sensitive stream areas, and certain utility rights-of-way is strictly prohibited.

Please remember to be careful! You are primarily responsible for your own safety. Look out for natural hazards and dangers when you are in the forest. Above all, think of yourself as an ambassador for trail riding. Your actions speak for

all riders so be sure that everyone you meet remembers trail riders as good citizens!

## PLEASE NOTE THE FOLLOWING RULES

1. Stay on the 'Designated Trail' only. No cross country travel.
2. Do Not Ride OHV on roads or the road right-of-way.
3. Do Not Ride your OHV in the Camping Area or Parking Lot. Use the Trail provided.
4. OHV in excess of 50 inches in width is prohibited.
5. OHV tires with lug length in excess of 1" (inch) are prohibited.
6. All OHV's must have a spark arresting device (muffler).
7. OHV in violation of applicable noise emission standards in excess of (99) decibels at (20) inches from exhaust is prohibited.
8. Careless or reckless operation without regard for safety of any person or property (wheelies, donuts, excessive speed) is prohibited.
9. Camp Areas 5 m.p.h. for OHV's and motorcycles and vehicles.
10. Parking or leaving a vehicle in violation of posted instructions for 'Day Use / Overnight Camping' is prohibited.
11. Riders under 16 years of age are the responsibility of legal guardians.
12. Day Use hours are 6:00 am to 8:00 pm or daylight to dark.
13. Quiet Time is 10:00 pm to 6:00 am in the camping areas.
14. Discharging any type of firearm, fire works or explosive within 150 yards is prohibited.
15. Short cutting a switchback on any designated trail is prohibited.
16. Causing resource damage - Operation of OHV's in ponds, creeks, power line or water line right-of-ways (or sensitive areas) is prohibited.
17. Do Not damage or cause damage to the trail. No mudding or riding when soil conditions are wet.

## PROPERTY & SANITATION

- Preserve and protect your National Forests. Leave natural areas the way you find them. Don't carve, chop, cut or damage any live trees. Use tree-saver straps when tying down horses.
- Indian sites, old cabins and other structures along with objects and artifacts associated with them, have historic or archeological value. Damaging or removing any historic or archeological resource is strictly prohibited.

- Throw all garbage and litter in containers provided for this purpose, or take it with you.

## CAMPING AND CAMPFIRES

- Campgrounds and other recreation sites can be used only for recreation purposes. In campgrounds, camp only in those places specifically marked or provided.
- Obey restrictions on fires. Fires may be limited or prohibited at certain times. Within campgrounds and other recreation sites, build fires only in fire rings, stoves, grills or fireplaces provided for that purpose.
- Remove all personal property and trash, and be sure your fire is completely extinguished before leaving. You are responsible for keeping fires under control.

## PUBLIC BEHAVIOR

- Must operate any audio devices, such as a radio or musical instrument, at responsible sound levels so that it does not disturb other visitors.
- Pets must always be restrained or on a leash while in developed recreation sites. Saddle or pack animals are allowed in recreation site only where authorized by posted instructions.
- No fighting or boisterous behavior.
- Firing a gun is not allowed: (a) in or within 150 yards of a residence, building, campsite, developed recreation site, or occupied area, across or on a road or body of water; (c) in any circumstance whereby any person may be injured or property damaged.

## HOW TO TREAD LIGHTLY

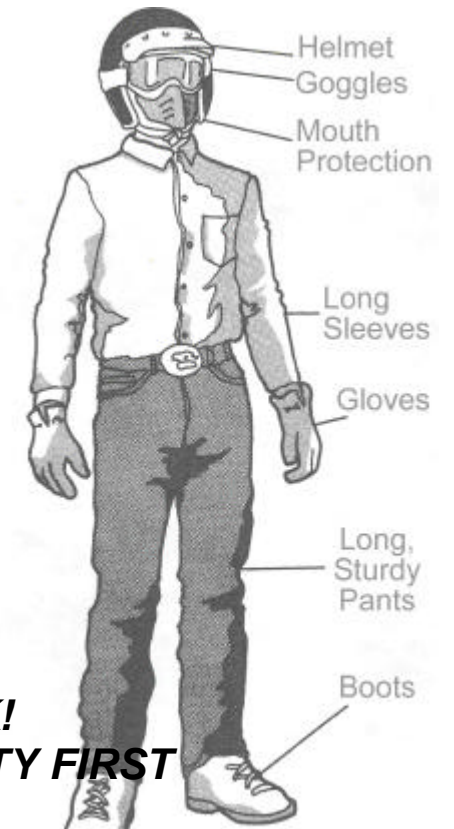
Traveling only where permitted.

Respecting the rights of hikers, campers, horse back riders and other trail users to enjoy their activities undisturbed.

Educating myself by obtaining maps and regulations from public agencies; complying with signs and barriers; and asking owners permission to cross private property.

Avoiding streambanks, lakeshores, meadows, muddy roads and trails, steep hillsides, wildlife and livestock. Ford streams only at designated crossings.

Driving and traveling responsibly to protect the environment and preserve opportunities to enjoy recreation on wild lands.



**THINK!  
SAFETY FIRST**

**WEAR YOUR  
SAFETY GEAR**

**OHV'S ON  
DESIGNATED  
TRAIL  
ONLY**



Effective  
March 1, 2005

RED DIRT  
PRESERVE

For more information contact:  
Kisatchie Ranger District  
229 Dogwood Park Road  
Provençal, LA 71468  
(318) 472-1840  
TTY: (318) 473-7254 [www.fs.fed.us/r8/kisatchie](http://www.fs.fed.us/r8/kisatchie)

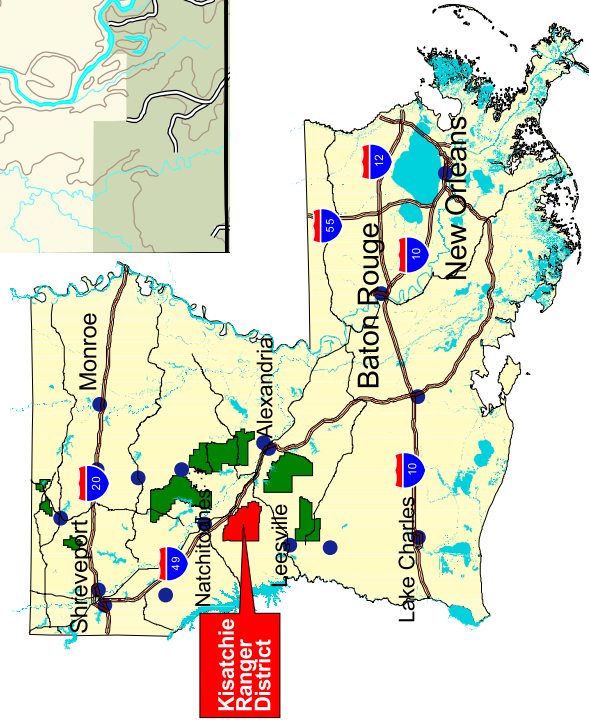
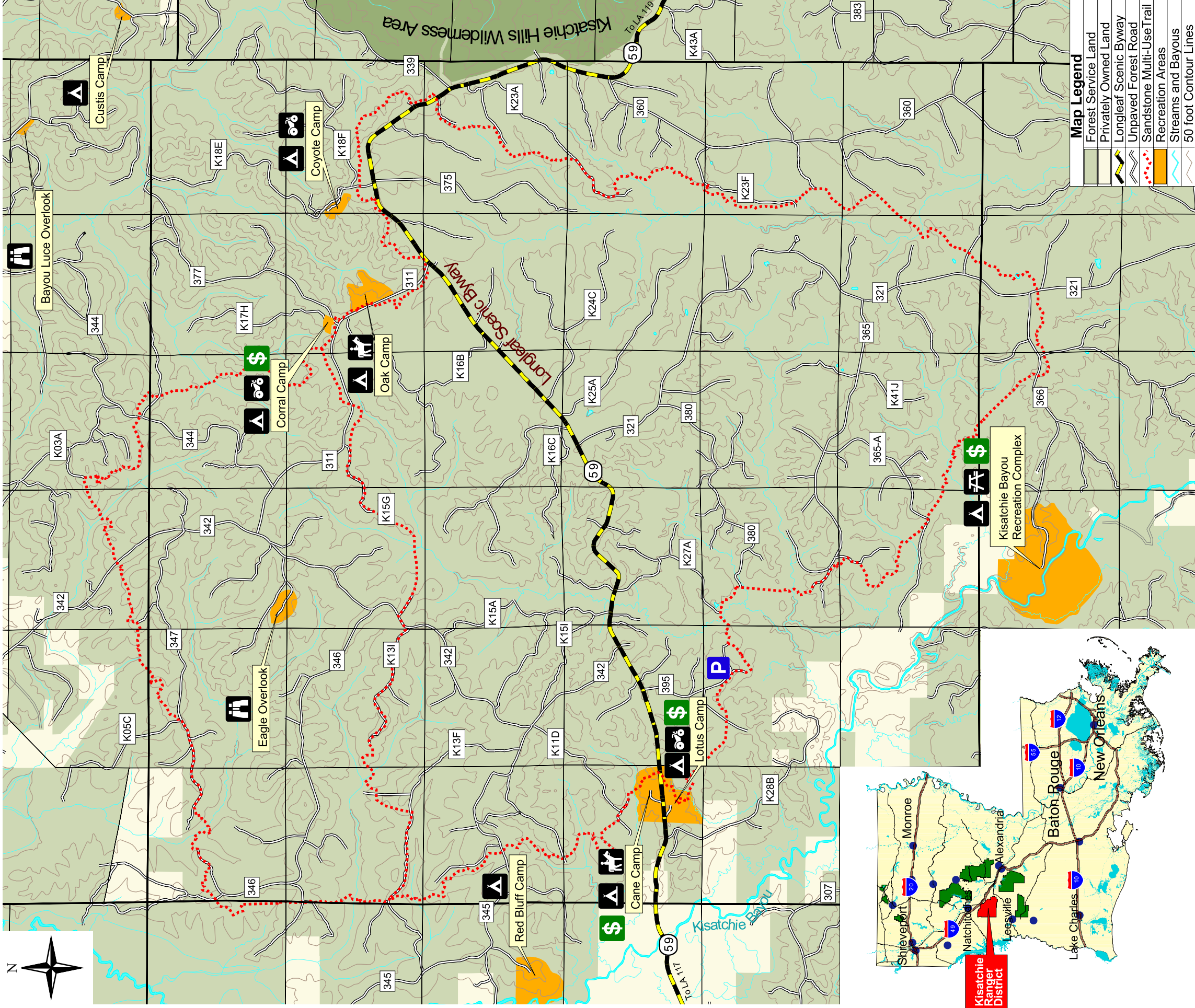


*Recreation Opportunities*

**KISATCHIE RANGER DISTRICT**  
229 Dogwood Park Road, Provençal, Louisiana 71468



# SANDSTONE MULTIPLE-USE TRAIL



## Kisatchie National Forest



2500 Shreveport Highway - Pineville, LA 71360 Phone (318) 473-7160  
TTY (318) 473-7254 OHV Hotline (866) 830-6467

DATE: June 2006  
Southern Region