

Forest Plan Maps -- 2010 Updates

Alternative B - 2010 Selected Alternative

- Map 1 - Management Prescription Category Map
- Map 2 - Vegetation and Wildlife Habitat Restoration Priorities
- Map 3 - Source Environment Priority Map
- Map 4 - Fire Regimes



Boise National Forest
Alternative B - Proposed Action
2010

Administrative Boundary
 Administered by Boise and Salmon-Challis NF
 Counties

Management Prescription Categories

- 1.1 Existing Wilderness
- 1.2 Recommended Wilderness
- 2.2 Research Natural Area
- 2.4 Boise Basin Experimental Forest
- 3.1 Passive Restoration and Maintenance of Aquatic, Terrestrial, and Hydrologic Resources
- 3.2 Active Restoration and Maintenance of Aquatic, Terrestrial, and Hydrologic Resources
- 4.1a Undeveloped Recreation: Maintain Inventoried Roadless Area
- 4.1c Undeveloped Recreation: Maintain Unroaded Character with Allowance for Restoration Activities
- 4.2 Roaded Recreation
- 5.1 Restoration and Maintenance Emphasis within Forest Landscapes
- 6.1 Restoration and Maintenance Emphasis within Shrubland and Grassland Landscapes
- Non-Forest System Lands

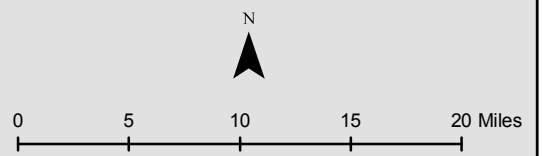
Wild & Scenic River Classification

- Recreation (R)
- Scenic (S)
- Wild (W)
- Suitable Wild & Scenic River

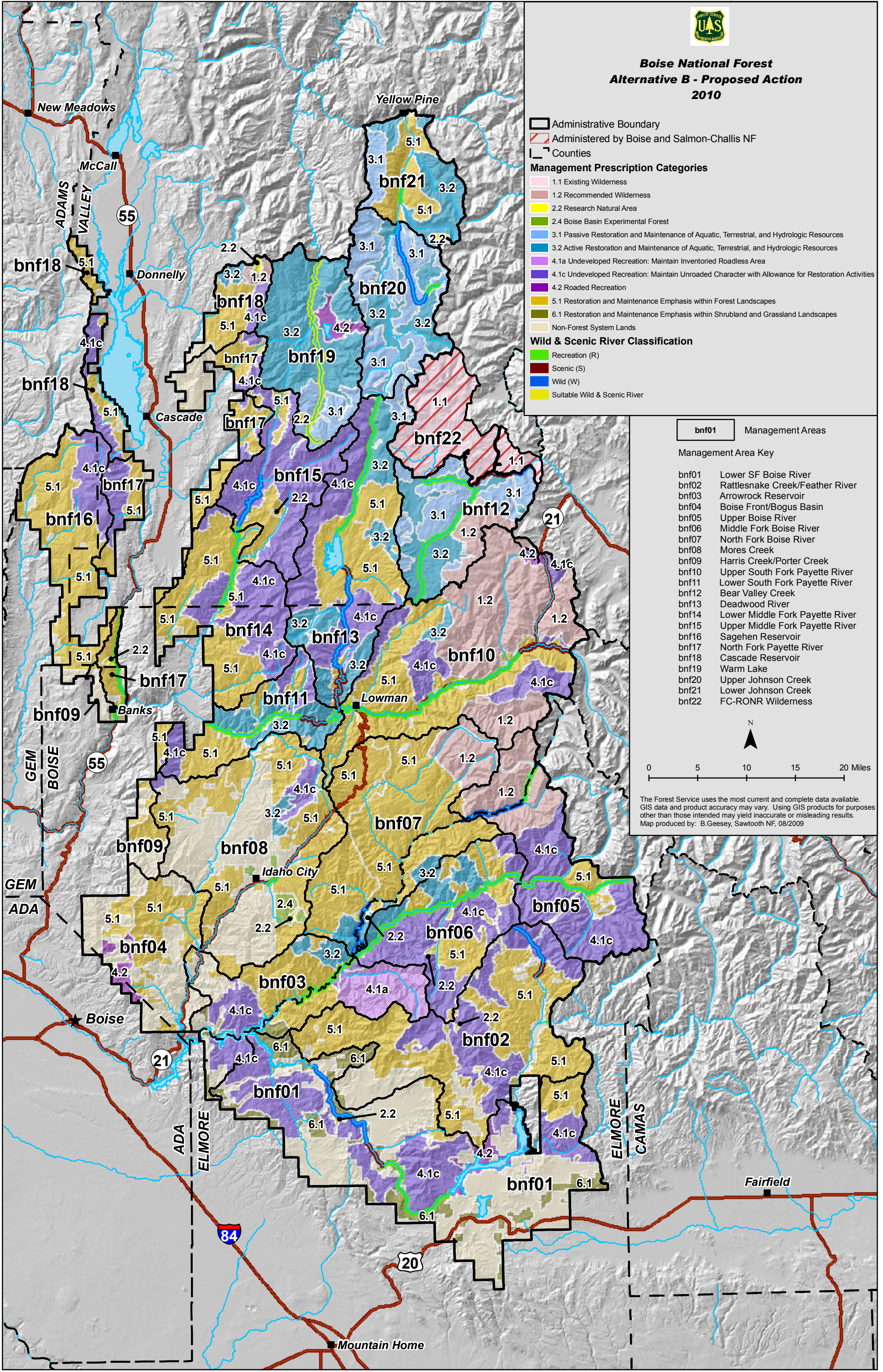
bnf01 Management Areas

Management Area Key

bnf01	Lower SF Boise River
bnf02	Rattlesnake Creek/Feather River
bnf03	Arrowrock Reservoir
bnf04	Boise Front/Bogus Basin
bnf05	Upper Boise River
bnf06	Middle Fork Boise River
bnf07	North Fork Boise River
bnf08	Mores Creek
bnf09	Harris Creek/Porter Creek
bnf10	Upper South Fork Payette River
bnf11	Lower South Fork Payette River
bnf12	Bear Valley Creek
bnf13	Deadwood River
bnf14	Lower Middle Fork Payette River
bnf15	Upper Middle Fork Payette River
bnf16	Sagehen Reservoir
bnf17	North Fork Payette River
bnf18	Cascade Reservoir
bnf19	Warm Lake
bnf20	Upper Johnson Creek
bnf21	Lower Johnson Creek
bnf22	FC-RONR Wilderness



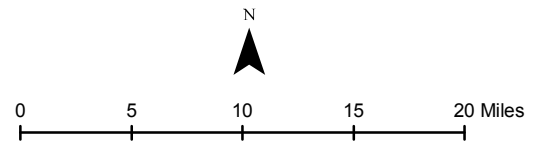
The Forest Service uses the most current and complete data available. GIS data and product accuracy may vary. Using GIS products for purposes other than those intended may yield inaccurate or misleading results. Map produced by: B.Geesey, Sawtooth NF, 08/2009



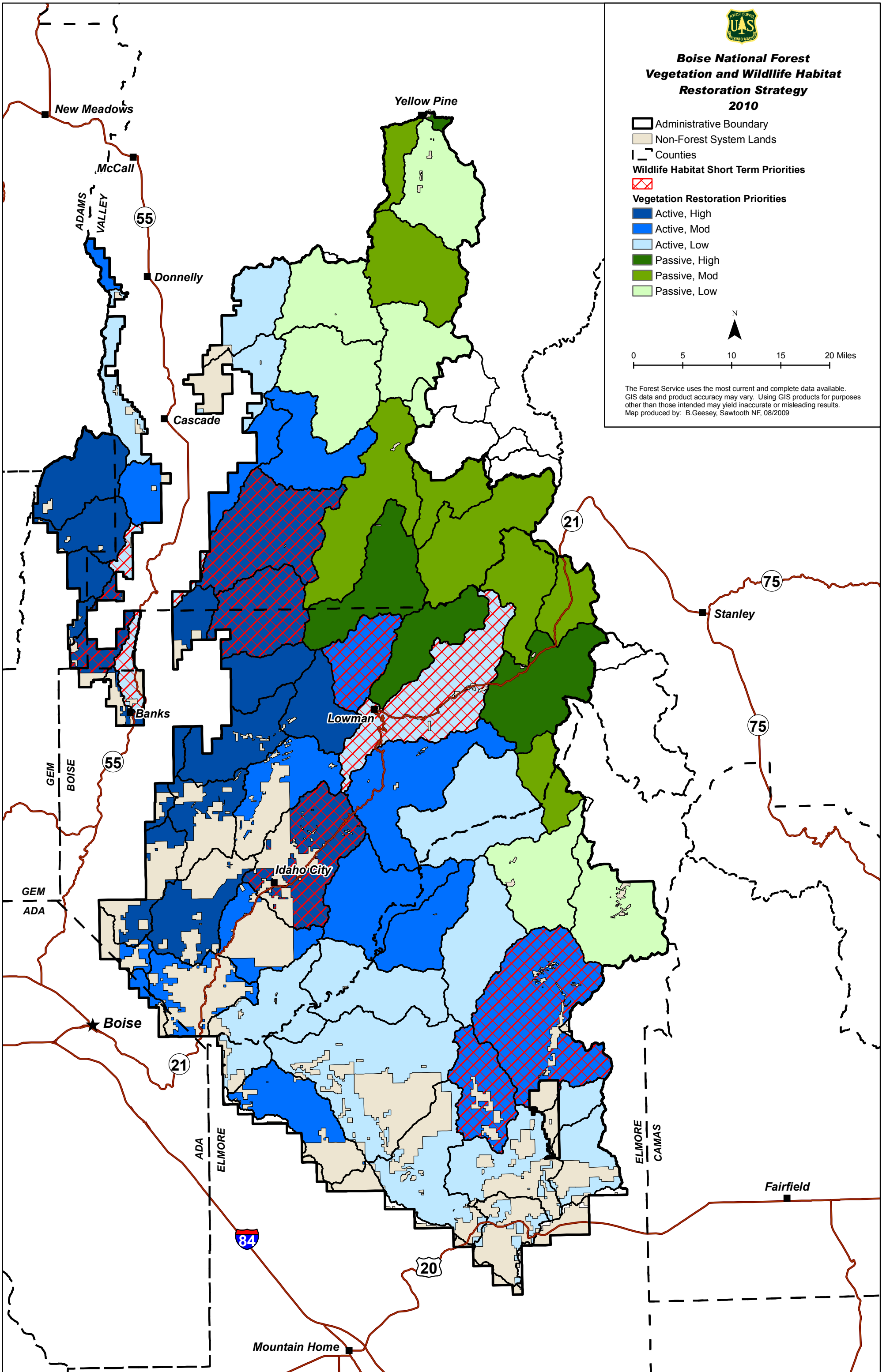


Boise National Forest Vegetation and Wildlife Habitat Restoration Strategy 2010

- Administrative Boundary
- Non-Forest System Lands
- Counties
- Wildlife Habitat Short Term Priorities**
 - Wildlife Habitat Short Term Priorities
- Vegetation Restoration Priorities**
 - Active, High
 - Active, Mod
 - Active, Low
 - Passive, High
 - Passive, Mod
 - Passive, Low



The Forest Service uses the most current and complete data available. GIS data and product accuracy may vary. Using GIS products for purposes other than those intended may yield inaccurate or misleading results. Map produced by: B. Geesey, Sawtooth NF, 08/2009





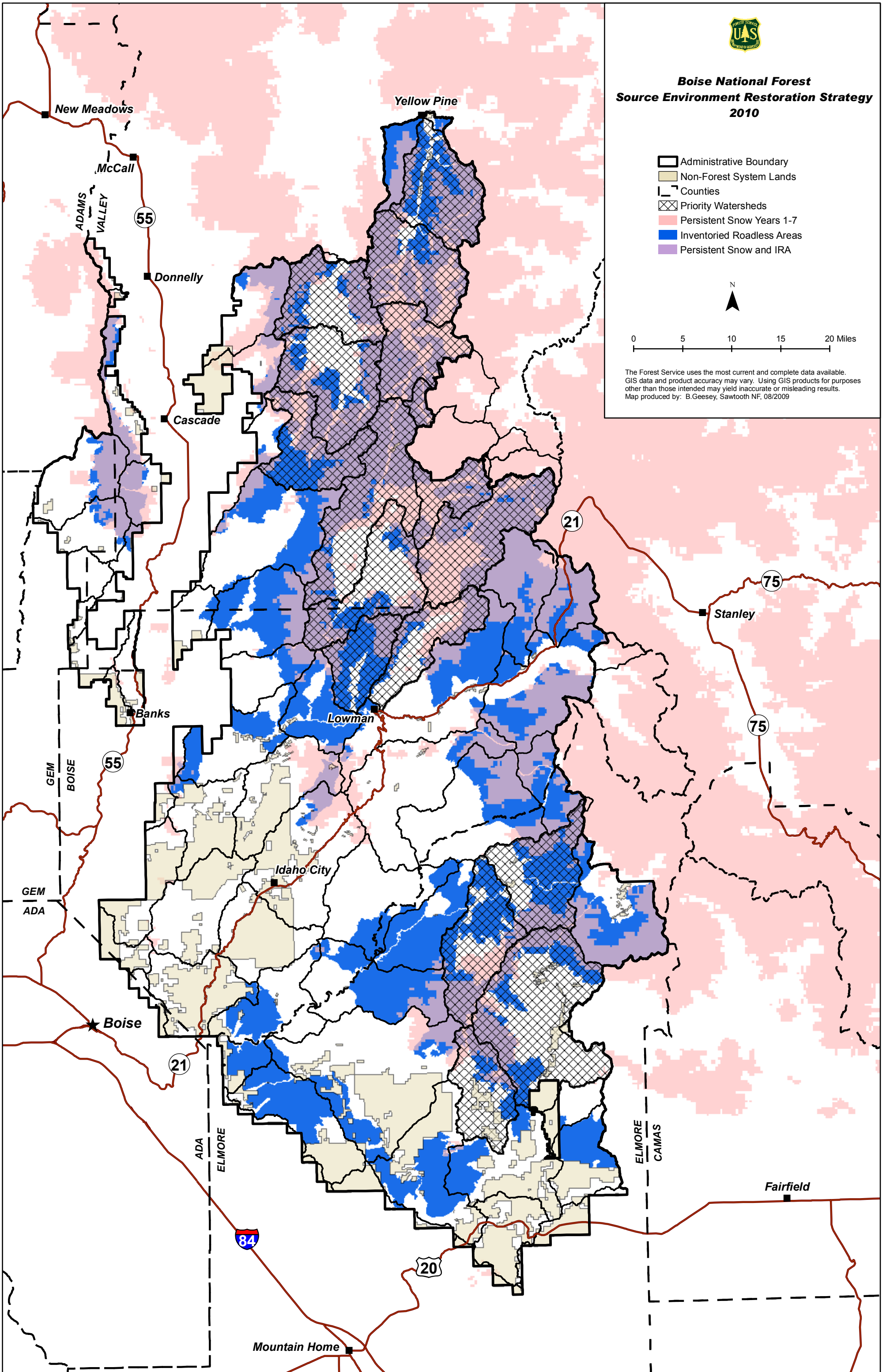
Boise National Forest Source Environment Restoration Strategy 2010

- Administrative Boundary
- Non-Forest System Lands
- Counties
- Priority Watersheds
- Persistent Snow Years 1-7
- Inventoried Roadless Areas
- Persistent Snow and IRA



0 5 10 15 20 Miles

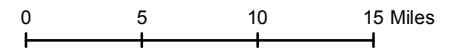
The Forest Service uses the most current and complete data available. GIS data and product accuracy may vary. Using GIS products for purposes other than those intended may yield inaccurate or misleading results. Map produced by: B. Geesey, Sawtooth NF, 08/2009





Boise National Forest Forested Fire Regimes 2010

- Administrative Boundary
- Fire Risk Communities
- Non-Forest
- Fire Regime**
- Nonlethal
- Mixed 1
- Mixed 2
- Lethal



The Forest Service uses the most current and complete data available. GIS data and product accuracy may vary. Using GIS products for purposes other than those intended may yield inaccurate or misleading results. Map produced by: B. Geesey, Sawtooth NF, 08/2009

