



Forest
Service

Alaska Region
Tongass National Forest

648 Mission Street
Ketchikan, AK 99901
Phone: (907) 225-3101
Fax: (907) 228-6215

File Code: 1920

Date: April 25, 2011

Route To:

Subject: Tongass National Forest Land and Resource Management Plan Errata: Forest-wide Standards and Guidelines for Wildlife in Remote Recreation LUD

To: Tongass Leadership Team

The Tongass National Forest Land and Resource Management Plan incorrectly lists the WILD1 subsections for wildlife Forest-wide standards and guidelines that apply to the Remote Recreation Land Use Designation (LUD) in a table on page 3-46. It appears that when the Tongass amended the Forest Plan in 2008, the Forest-wide wildlife standards and guidelines to be applied to the Remote Recreation LUD were not cross-referenced correctly from the 1997 Forest Plan.

This is an administrative correction (36 CFR §219.31(b)(3)) to the 2008 Tongass Land and Resource Management Plan and is documented in an errata dated April 22, 2011 (see attached). The corrected table displays the wildlife Forest-wide standards and guidelines WILD1 subsections that apply to the Remote Recreation LUD.

The correction made by this errata does not substantively change the information presented and does not affect the decisions in the ROD or the Forest Plan.

/s/ Forrest Cole
FORREST COLE
Forest Supervisor

Attachment (1)
2008 Forest Plan Errata_042211

cc: James M Thomas
Cheryl A Carrothers
Brian Logan



3 Management Prescriptions

Remote Recreation Land Use Designation

Apply the following Forest-wide Standards and Guidelines located in Chapter 4:

Category	Section	Subsections
Air	AIR	All
Beach and Estuary Fringe	BEACH1	All
	BEACH2	I,II(A-G,K,L)
Facilities	FAC	All
Fire	FIRE	All
Fish	FISH	All
Forest Health	HEALTH	All
Heritage Resources/Sacred Sites	HSS	All
Invasive Species	INV	All
Karst and Cave Resources	KC	All
Lands	LAND	All
Minerals and Geology	MG	All
Plants	PLA	All
Recreation and Tourism	REC	All
Riparian	RIP1	All
	RIP2	I-II(A-E,G)
Rural Community Assistance	RUR	All
Scenery	SCENE1	All
	SCENE2	I,II(A,E)
	SCENE3	I(A,B,D),II
Soil and Water	SW1, 2, 4	All
	SW3	I(A:1-4,6-7),II,III
Subsistence	SUB	All
Timber	TIM2, 5, 8	All
Trails	TRAI	All
Wetlands	WET	All
Wildlife	WILD1	I-V; VII-XI; XII(A:1-8; 11,B); XIII; XIV(A:1); XV; XVI; XVIII(A:1); XIX
	WILD2	I(A:1,B)
	WILD3, 4	All

Apply the following LUD Standards and Guidelines:

FACILITIES

Facilities Improvements: FAC2 and FAC3

- A. Design and locate administrative and non-recreation structures to reduce adverse effects on recreation and tourism opportunities.

FIRE

Fire Suppression: FIRE1

Suppression Action

- A. Suppress wildfires using the suppression option identified in the Southeast Alaska/Prince William Sound Fire Management Plan.
- B. Emphasize suppression tactics that result in the least possible disturbance or evidence of human presence.
 1. Keep use of mechanized equipment to a minimum.
 2. Suppression tactics will avoid human/bear conflicts and existing policy will be emphasized to leave no trash or any other kinds of bear attractants in the area.



Forest
Service

Alaska Region
Tongass National Forest

648 Mission Street
Ketchikan, AK 99901
Phone: (907) 225-3101
Fax: (907) 228-6215

File Code: 1920
Route To:

Date: October 26, 2011

Subject: Tongass National Forest Land and Resource Management Plan Errata: Addition of Finger Mountain FAA Communication Site to Appendix E

To: Tongass Leadership Team

A permanent communication site has existed on Finger Mountain, East of Hoonah Sound, on Chichagof Island since October 1, 1982. This site was inadvertently left off the list of communication sites on the Sitka Ranger District identified in the 2008 Tongass Land and Resource Management Plan (Forest Plan), Appendix E.

This is an administrative correction to the 2008 Tongass Land and Resource Management Plan and is documented in an errata dated October 17, 2011 (see attached). The corrected page (E-4) displays the Finger Mountain Communication Site as an approved communication site on the Sitka Ranger District.

The correction made by this errata does not substantively change the information presented and does not affect the decisions in the ROD or the Forest Plan.

/s/ Theron Schenck for
FORREST COLE
Forest Supervisor

cc: James M Thomas
Clay R Davis



Communication Sites

Table E-1 (continued)
Approved Communication Sites on the Tongass National Forest

District	Site Name	Site Location	Site Size (in acres)	Elevation (in feet)
Petersburg	Level Island	Sec. 28, T62S, R79E, CRM 56° 28' 05" N, 133° 05' 00" W.	120	25
Petersburg	Lindenberg Peak	SW4NE4, Sec. 23, T59S, R78E, CRM 56° 44' 38" N, 133° 04' 30" W	1	3,249
Petersburg	Mt. McArthur	SE4SE4, Sec. 12, T67S, R72E, CRM; 56° 04' 06" N, 134° 11' 43" W	1	1,650
Petersburg	Petersburg Mtn.	SW4SW4, Sec. 21, T58S, R79E, CRM 56° 49' 33" N, 132° 59' 10" W	1	1,600
Sitka	Biorka Island	NE4, Sec. 7, T58S, R63E, CRM 56° 51' 32" N, 135° 33' 40" W	151	230
Sitka	Finger Mountain	Sec. 26, T48S, R61E, CRM 57° 40' 21" N, 135° 28' 45" W	0.9	2,925
Sitka	Manley Mtn.	Sec. 7, T55S, R66E, CRM 57° 06' 54" N, 134° 48' 38" W	5	2,214
Sitka	Moore Mtn.	NW4NE4, Sec. 31, T49S, R64E, CRM 57° 35' 04" N, 135° 11' 58" W	1	3,075
Sitka	Mt. Furuheim Area	SW4SW4, Sec. 18, T56S, R66E, CRM 57° 00' 52" N, 134° 59' 17" W	1	5,328
Sitka	Mud Bay	SE4SW4, Sec. 25, T54S, R61E, CRM 57° 09' 09" N, 135° 38' 45" W	1	1,055
Sitka	Rodman Bay	SW4, Sec. 4, T52S, R63E, CRM 57° 22' 55" N, 135° 18' 45" W	2	3,100
Sitka	South Passage	Sec. 36, T47S, R64E, CRM 57° 44' 48" N, 134° 58' 04" W	5	2,031
Sitka	Steelhead	NW4SE4, Sec. 13, T47S, R59E, CRM 57° 47' 27" N, 135° 56' 26" W	1	2,339
Sitka	Upper Kruzof	SE4NW4, Sec. 18, T53S, R61E, CRM 57° 16' 30" N, 135° 46' 36" W	1	2,350
Thorne Bay	Cape Pole	NE4SE4NW4, Sec. 22, T68S, R75E, CRM 55° 57' 57" N, 133° 47' 33" W	0.04	10
Thorne Bay	Coffman	SE4, Sec. 35, T67S, R81E, CRM 56° 48' 02" N, 132° 48' 16" W	0.156	30
Thorne Bay	Manty Mtn.	SE4, Sec. 26, T69S, R82E, CRM 55° 51' 10" N, 132° 47' 30" W	1	3,156
Thorne Bay	Ratz Mtn. #1	SE4, Sec. 9, T70S, R83E, CRM 55° 37' 07" N, 132° 22' 39" W	0.1	2,862
Thorne Bay	Tolstoi II	Sec. 16, T72S, R85E, CRM 55° 37' 07" N, 132° 22' 39" W	1	2,210
Wrangell	Elbow Mtn.	NW4, Sec. 3, T60S, R86E, CRM 56° 42' 12" N, 133° 52' 45" W	1	3,900
Wrangell	Etolin (Keating)	W2SW4, Sec. 17, T66S, R83E, CRM 56° 08' 50" N, 132° 37' 20" W	1	3,051
Wrangell	Etolin - Burnett	NE4, NW4, Sec. 22, T66S, R84E, CRM 56° 08' 10.6" N, 132° 24' 17.7" W.	1	3,500



Forest
Service

Alaska Region
Tongass National Forest

648 Mission Street
Ketchikan, AK 99901
Phone: (907) 225-3101
Fax: (907) 228-6215

File Code: 1920

Date: February 6, 2012

Route To:

Subject: Tongass National Forest Land and Resource Management Plan Errata: Mapping Correction in VCU 7470 Small Old Growth Reserve (OGR)

To: Tongass Leadership Team

The Tongass National Forest Land and Resource Management Plan includes a mapping error for a small Old Growth Reserve (OGR) in Value Comparison Unit (VCU) 7470 on the Ketchikan Misty Fiords Ranger District. When the Tongass amended the Forest Plan in 2008, this small OGR was mapped incorrectly. It shows that the Salty Timber Sale Decision Notice (DN) modification was adopted, rather than the Interagency OGR (IOGR). The Tongass National Forest – 2008 Forest Plan Old Growth Reserve Data Sheet (attached) shows that the Forest Supervisor 2008 Decision was to “adopt the IOGR.” This modified the 2000 Salty Timber Sale in the 2008 Forest Plan Amendment.

This mapping error is considered an administrative correction (36 CFR §219.31(b)(3)) to the 2008 Tongass Land and Resource Management Plan and is documented in the corrected map entitled “VCU 7470 IOGR” (attached).

The correction made by this errata does not substantively change the information presented and does not affect the decisions in the ROD or the Forest Plan.

/s/ Patricia M. O'Connor (for)
FORREST COLE
Forest Supervisor

Attachments (2)

- 1- Old Growth Reserve Data Sheet
- 2- Corrected map - VCU 7470 IOGR

cc: James M Thomas
Jeff DeFreest
Rob Reeck
Brian Logan
Mary A Friberg



VCU: 7470	District: KMRD	Version Adopted ¹ : I	OG LUD ID: 63
Location:		Official Size Class ² : S	Functional Size Class ² : L

¹Version Adopted is the type of proposal that was adopted in the 2008 Forest Plan and includes: Forest Plan District/Interagency (FP), Interagency recommendation (I), Forest Supervisor (FSR), No Change (NC) or Not Reviewed (NR).

²S=Small, M=Medium, L=Large, N=No Reserve.

	VCU ¹	Minimum Required (Small OGR)		OG LUD ² (Small, Medium, & Large)		Small OGR ³ (OG + Other Non-Dev LUD)	
		Total	POG	Total	POG	Total	POG
Acres	15837	2534	1267	2,858	1,964	2854	1964
% of VCU	100%	16.0%	8.0%	18.0%	12.4%	18.0%	12.4%

¹ VCU acres include ONLY National Forest System land acres.

² OG LUD includes all OG LUDs in the VCU, and may include OG LUD that is not part of this reserve. It does not include OG LUD associated with this reserve that overlaps into adjacent VCUs.

³ Small OGR includes all OG and other Non-Dev LUDs that apply to the VCU to meet Forest Plan Standard and Guidelines for this reserve. This includes overlap into adjacent VCUs and excludes Non-Dev LUD in the VCU not associated with this reserve.

	VCU #(s)	Total Acres	POG Acres
Small OG LUD Overlap into Adjacent VCU ¹	N	0	0
Small OG LUD Overlap from Adjacent VCU ¹	N	0	0

¹ "N" or "0" Indicates no overlap.

Pre-2008 Interagency Review:

(1) Notes by Jack Gustafson (ADF&G) Salty Site Visit - July 21, 1999.

Additional References:

(2) Revised Salty TS DN and FONSI 2000; (3) GIS Cover "salty_bioogr" is the only reference to the "Original Interagency Proposal".

Pre-2008 Results and Comments: (numbers in parentheses refer to references noted above)

(1) Modified TLMP Small OGR to improve connectivity between George Inlet Salt Chuck and Naha LUD II. Three proposals developed: the "original" interagency (reference GIS Cover "salty_bioogr"), the "compromise" interagency (no map) and the IDT proposal. Compromise Interagency proposal dropped acres on east side of the Original OGR in trade for a mapped connection between George Inlet Salt Chuck and the Naha LUD II area. The Compromise proposal included lands between the existing road and the State lands around George Inlet Salt Chuck. IDT modified this proposal by excluding 2 proposed harvest units and reduce land between road and State lands. The IDT proposal reduced the size fo the OGR and did not include lands between the road and the State land. IDT proposal is biologically inferior to the both the Interagency proposals. (2) Selected IDT Proposal that modified or reconfigured the TLMP OGR by dropping acres to the east and extending it to the south. This formed a connection with the State land surrounding Salt Lagoon and maintained a travel corridor between the Naha LUD II area. Smaller in size than the Interagency proposals. The "Compromise" Interagency proposal modified TLMP Small OGR to improve connectivity between George Inlet Salt Chuck and Naha LUD II. Proposal

dropped acres on east side and extended south to connect State land surrounding Salt Lagoon (reference GIS Cover "salty_bioogr").

IOGR Rationale:

Adopt Past Interagency Review not DN to modify Small OGR to improve connectivity between George Inlet Salt Chuck and Naha LUD II. IDT Proposal dropped acres on the east side and extended OGR south to form a connection with the State land surrounding Salt Lagoon and maintain a travel corridor to the Naha LUD II area. Proposal excludes 2 units proposed for harvest.

Forest Supervisor 2008 Decision:

Adopt the IOGR. The IOGR modified the 2000 Salty TS FP Amendment. The IOGR modified the Small OGR to improve connectivity. The OGR maintains a large block of POG, VC 6/7 habitat and connectivity between George Inlet Salt Chuck and Naha LUD II.

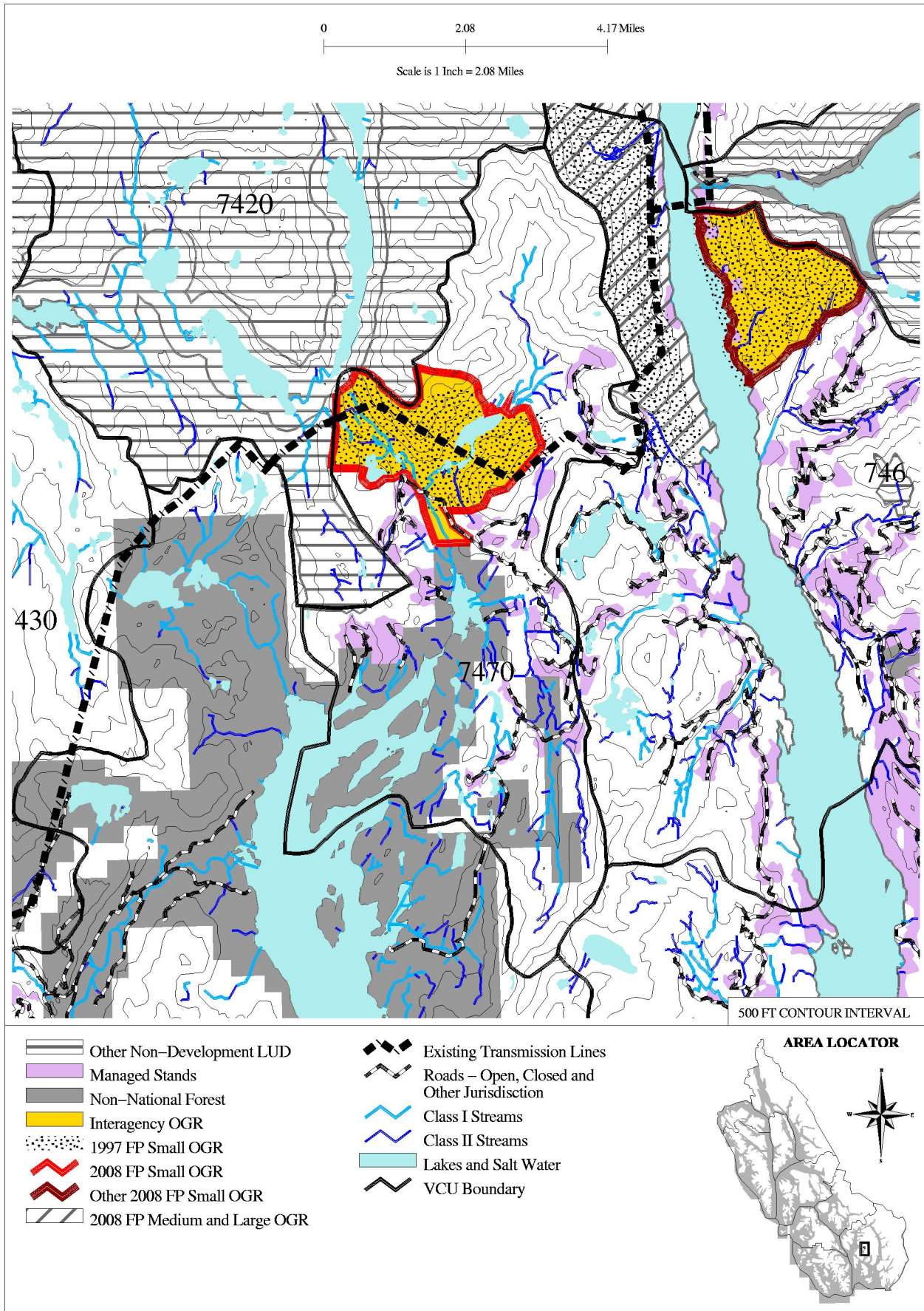
Implementation Notes:

Small OGR. The OGR includes lakes. Acknowledge that existing FR 8300000 occurs in the IOGR and that this road may be improved for passenger vehicles and become a major route. The OGR excludes young-growth and harvest unit proposed in the Salty TS. The OGR includes lakes.

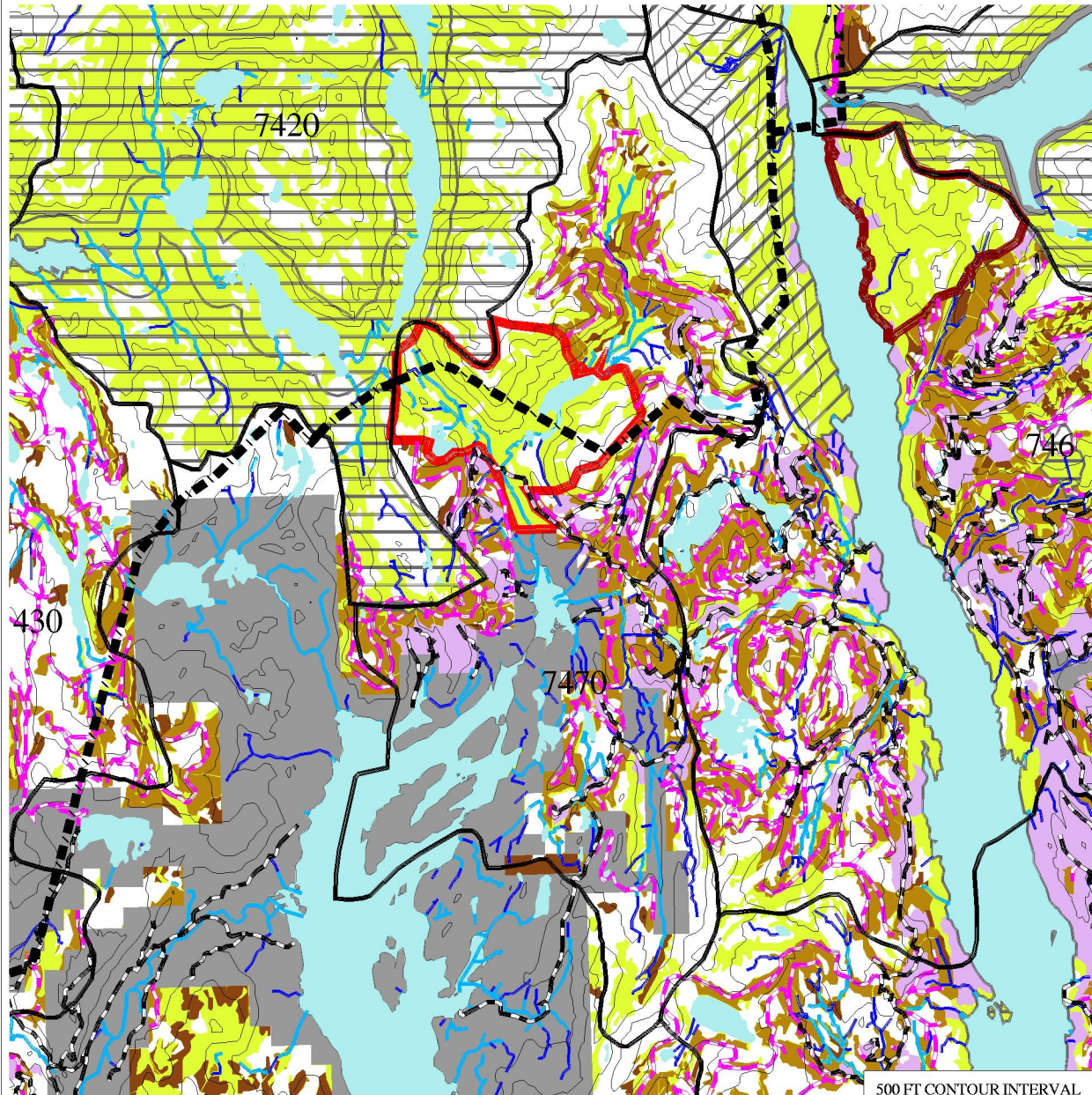
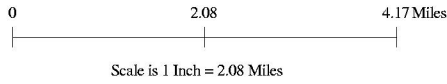
Interagency Recommended Review:

NR

VCU: 7470 OFFICIAL OGR ID: 63
 OLD GROWTH RESERVE – COMPARISON MAP



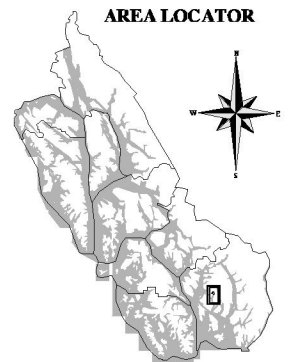
VCU: 7470 OFFICIAL OGR ID: 63
 OLD GROWTH RESERVE – POTENTIAL FUTURE CONDITION MAP



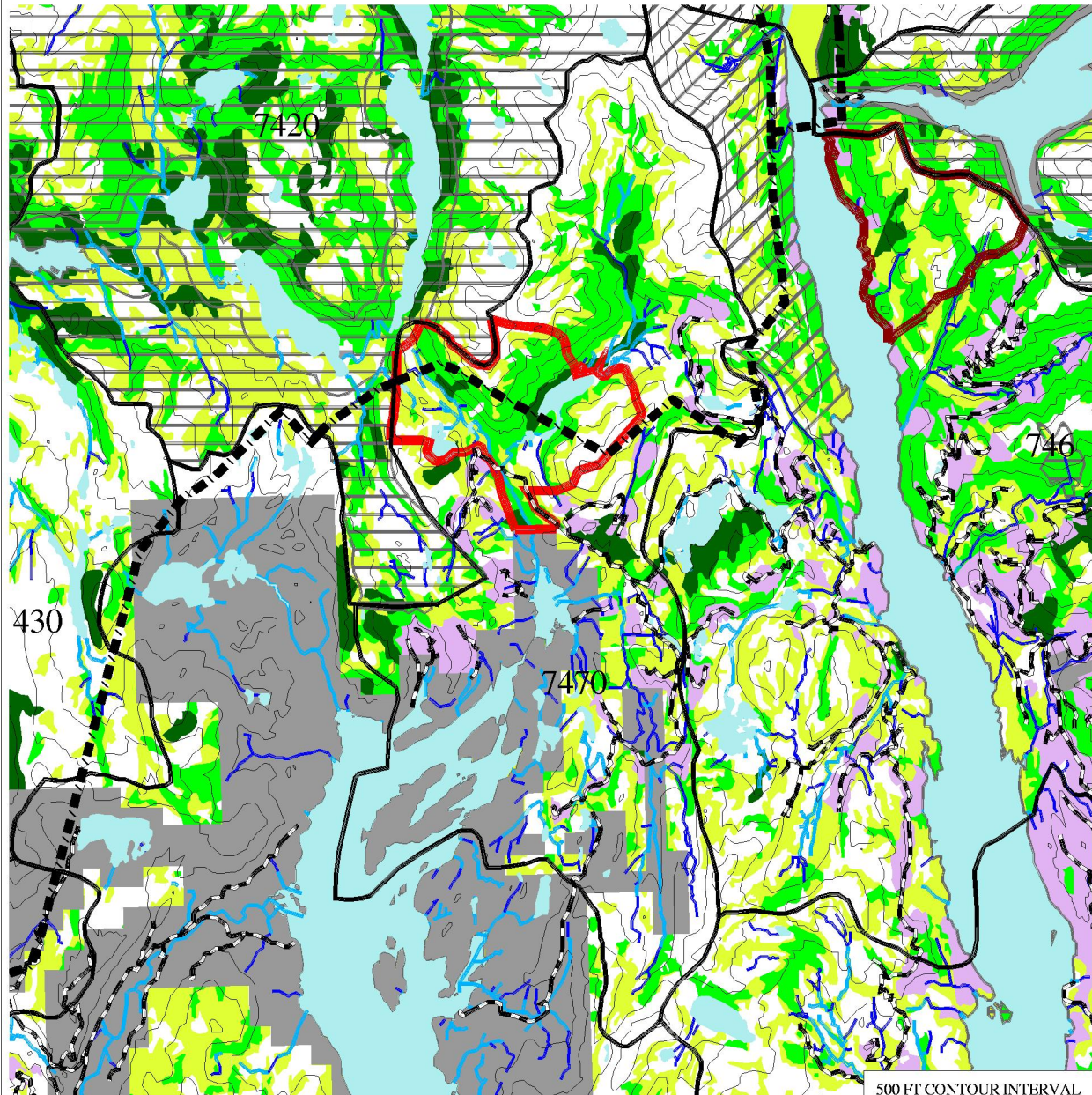
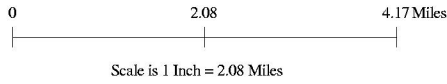
500 FT CONTOUR INTERVAL

- Other Non-Development LUD
- 2008 FP Medium and Large OGR
- Managed Stands
- Non-National Forest
- SD 4-67
- LSTA Harvest Units – Ground (Includes Short and Long Skyline, LT5)
- LSTA Harvest Units – Helicopter
- Lakes and Salt Water

- 2008 FP Small OGR in this VCU
- Other 2008 FP Small OGR
- Existing Transmission Lines
- Proposed Transmission Lines
- Roads – Open, Closed and Other Jurisdiction
- LSTA Roads
- Class I Streams
- Class II Streams
- VCU Boundary

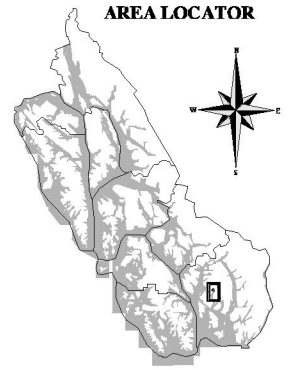


VCU: 7470 OFFICIAL OGR ID: 63
 OLD GROWTH RESERVE –HABITAT MAP

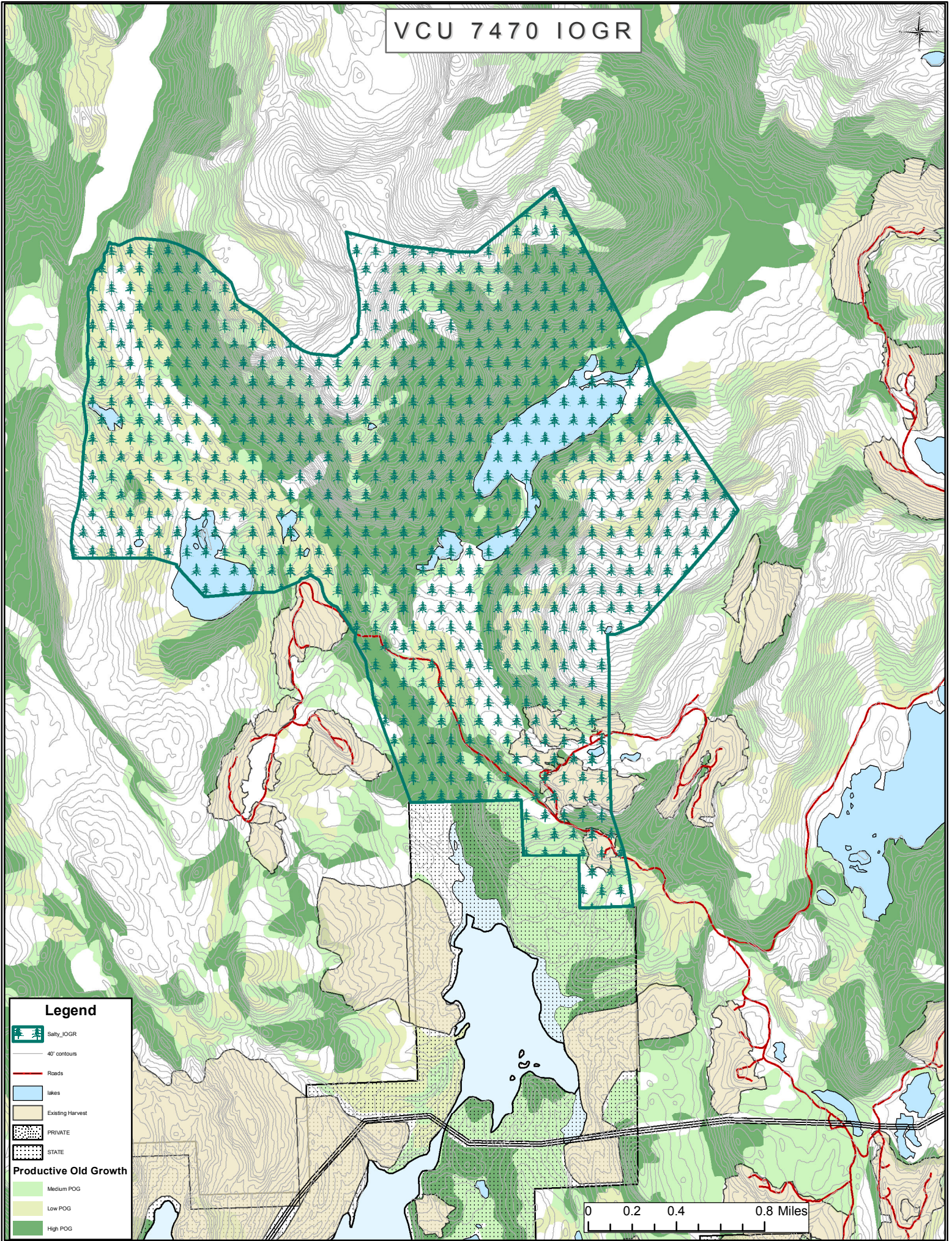


- Other Non-Development LUD
- 2008 FP Medium and Large OGR
- Managed Stands
- Non-National Forest
- SD-4N, 4S, 4H and 5H
- SD-5N and 5S
- SD-67
- Lakes and Salt Water

- 2008 FP Small OGR
- Other 2008 FP Small OGR
- Existing Transmission Lines
- Roads -Open, Closed and Other Jurisdiction
- Class I Streams
- Class II Streams
- VCU Boundary



VCU 7470 IOGR



Legend

-  Salty IOGR
-  40' contours
-  Roads
-  lakes
-  Existing Harvest
-  PRIVATE
-  STATE
- Productive Old Growth**
-  Medium POG
-  Low POG
-  High POG

0 0.2 0.4 0.8 Miles