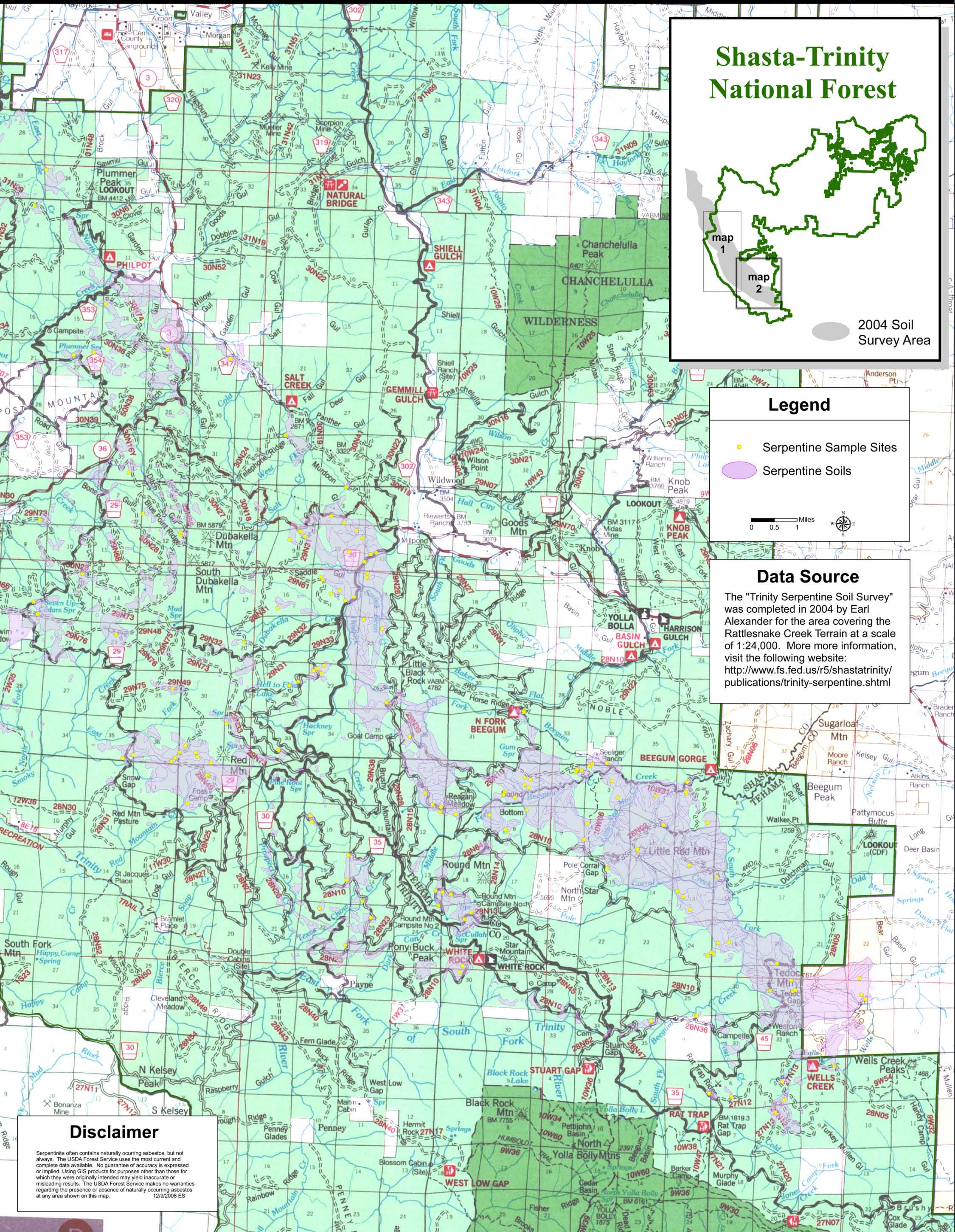


- Areas More Likely to Contain Naturally Occurring Asbestos - Serpentine Soil Survey on the Shasta-Trinity National Forest Map 2



Legend

- Serpentine Sample Sites
- Serpentine Soils

0 0.5 1 Miles

Data Source

The "Trinity Serpentine Soil Survey" was completed in 2004 by Earl Alexander for the area covering the Rattlesnake Creek Terrain at a scale of 1:24,000. More information, visit the following website:
<http://www.fs.fed.us/r5/shastatrinity/publications/trinity-serpentine.shtml>

Disclaimer

Serpentine often contains naturally occurring asbestos, but not always. The USDA Forest Service uses the most current and complete data available. No guarantee of accuracy is expressed or implied. Using GIS products for purposes other than those for which they were originally intended may yield inaccurate or misleading results. The USDA Forest Service makes no warranties regarding the presence or absence of naturally occurring asbestos at any area shown on this map.
 12/9/2008 ES



Geospatial Services
 Pacific Southwest Region
 USDA Forest Service
 1323 Club Drive
 Vallejo, CA 94592

