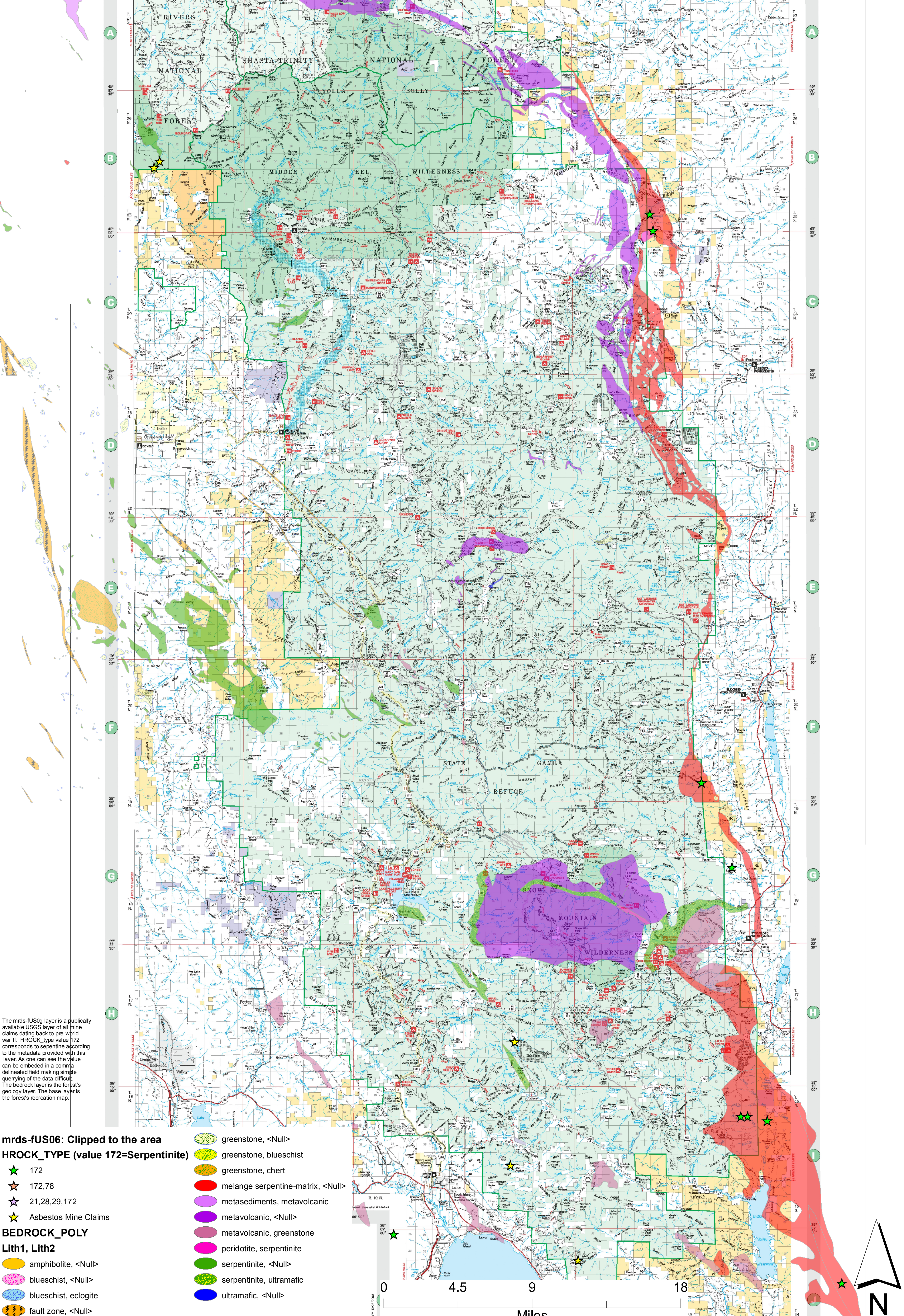


Potentially Asbestos Containing Areas of the Mendocino National Forest



The mrdc-fUS06 layer is a publicly available USGS layer of all mine claims dating back to pre-world war II. HROCK_type value 172 corresponds to serpentine according to the metadata provided with this layer. As one can see the value can be embedded in a comma delineated field making simple querying of the data difficult. The bedrock layer is the forest's geology layer. The base layer is the forest's recreation map.

mrdc-fUS06: Clipped to the area

- HROCK_TYPE (value 172=Serpentine)**
- ★ 172
 - ☆ 172,78
 - ☆ 21,28,29,172
 - ★ Asbestos Mine Claims

BEDROCK_POLY

- Lith1, Lith2**
- amphibolite, <Null>
 - blueschist, <Null>
 - blueschist, eclogite
 - fault zone, <Null>

- greenstone, <Null>
- greenstone, blueschist
- greenstone, chert
- melange serpentine-matrix, <Null>
- metasediments, metavolcanic
- metavolcanic, <Null>
- metavolcanic, greenstone
- peridotite, serpentine
- serpentine, <Null>
- serpentine, ultramafic
- ultramafic, <Null>

0 4.5 9 18 Miles

