



Recreation fees are an investment in outdoor recreation. Current and future generations will benefit as 95% of the funds are reinvested locally in the facilities and services that visitors enjoy, use and value.

Accomplishments provided with recreation fees on the Beaverhead-Deerlodge National Forest:

Campgrounds and Day Use Sites:

- Supported campground hosts at Reservoir Lake, Price Creek, and Grasshopper campgrounds and Sheepshead Recreation Area.
- Staffed and provided visitor services and site maintenance at Crystal Park Mineral Collection Area. In conjunction with an Eagle Scout project and AmeriCorps volunteers, maintained ¼ mile of accessible trail at the site.
- Repaired picnic tables at Reservoir and Price Creek campgrounds.
- Installed a new bulletin board and repaired and/or replaced fence at Miner Lake Campground.
- Installed interpretive signs, and painted tables, barriers and fence at the Lemhi Pass Sacajawea Memorial site.
- Increased employee presence at fee sites across the forest.
- Removed hazard trees and brush at Lemhi Pass site, and Grasshopper, Reservoir Lake, and Dinner Station campgrounds.
- Painted tables and restroom floors, repaired site identification signs and waterlines, and replaced site posts at Mono Creek, Seymour Creek, Willow, Boulder Creek, Pettengill, Lodgepole, May Creek, Mussigbrod, and Twin Lakes campgrounds and picnic areas.
- Provided stipends and vehicle fuel to volunteers who replaced 1,000 feet of jackleg fence at Lowland Campground and 225 feet of jackleg and rail fence at Sheepshead Recreation Area.

Outfitter and Guide Special Use Program:

- Administered and inspected outfitter and guide special use permits.
- Reconstructed one mile of trail and completed routine maintenance tasks on all trails used by outfitters and guides. Work was completed by district and AmeriCorps personnel.

Special Feature

Sheepshead Recreation Area is a great place to host large outdoor gatherings. The site not only has a pavilion that can accommodate 200 people, but also horseshoe pits, ball fields, paved trails, a volleyball court and fishing pier. In 2009, REA funds supported volunteers who provided 8,000 hours of labor and visitor information at the site.



Beaverhead-Deerlodge National Forest Revenue & Expenditures

Revenue*	
Source	Amount
Interagency Pass	\$1,521
Recreation Fees	\$121,100
Special Uses	\$49,454
Total	\$172,075

Expenditures	
Source	Amount
Maintenance & Repair	\$119,640
Visitor Services	\$14,729
Law Enforcement	\$6,010
Cost of Collections	\$6,010
Total	\$146,389

*Carryover funds will be used for large projects and the following season's startup costs.

Beaverhead-Deerlodge National Forest accomplishments continued:

Cabin Rentals:

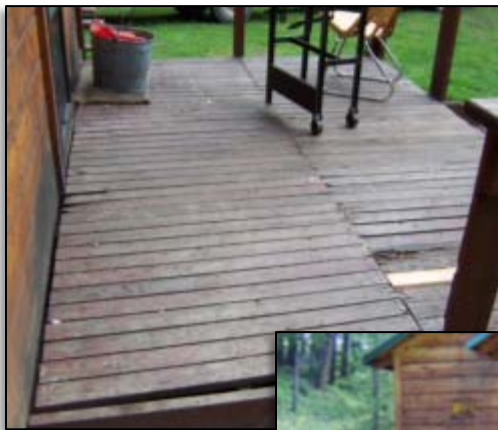
- Supported restoration crew and additional employees who completed projects at cabins across the forest.
- Stocked all cabins with firewood and tested water.
- Improved windows at Canyon Creek Cabin by repairing frames and replacing glass.
- Repainted interior and exterior windows, floors, doors, and furnishings at Canyon Creek and Twin Lakes cabins.
- Removed hazard trees and slash at High Rye Cabin.
- Provided stipends and vehicle gas to volunteers who removed and replaced 750 feet of jackleg and rail fence at High Rye Cabin.
- Completed removal of lead paint at Vigilante Guard Station. Also scraped, cleaned, primed and repainted the cabin exterior.
- Repaired front porch and refinished floor at Douglas Cabin. Also installed a new gate on the road leading to the cabin.
- Oiled exterior logs, patched log chinking, refinished floor, constructed a new picnic table and gravel paths, and repaired woodshed floor at Moose Lake Cabin.
- Oiled exterior logs and patched concrete foundation at Stony Cabin.
- Installed fire ring and new hand pump, and placed gravel in front of porch at West Fork of Rock Creek Cabin.
- Renovated outhouse interior, installed new picnic table, and purchased new propane cook stove, pots, pans, plates and utensils at Racetrack Cabin.



*Canyon Creek Cabin
work day*



*Stocking firewood at
May Creek Cabin*



*Before and after
pictures of Douglas
Cabin porch*



*Removing lead paint and repainting
Vigilante Cabin*

Beaverhead-Deerlodge National Forest Planned Projects for 2010

- Stain exterior and re-roof Bloody Dick Cabin.
- Stain exterior and deck at Gordon Reese Cabin.
- Construct restroom door screening to match historic character of Horse Prairie and Birch Creek cabins.
- Support hosts at Crystal Park Mineral Collection Area and Sheepshead Recreation Area.
- Continue to develop Crystal Park's site management plan.
- Initiate Grasshopper Campground renovation using funds received through a "Recreation Site Improvement (RSI)" grant.
- Provide stipend for Americorps St. Louis volunteers to assist with developed recreation site hazard tree removal and general maintenance.
- Conduct vegetation management projects and remove hazard trees at several recreation sites.
- Replace fence at Beaverdam Campground.
- Replace roof with new cedar shingles and construct a porch at Moose Lake Cabin.
- Install fire rings at Racetrack and Doney cabins and replace the picnic table at Racetrack.
- Complete maintenance and operational tasks at campgrounds, picnic areas, and rental cabins.

Recreation Program



Information:

**Beaverhead-Deerlodge National Forest
Recreation Fee Program, Contact:
406-683-3932**

Email:

nmeier@fs.fed.us

Online:

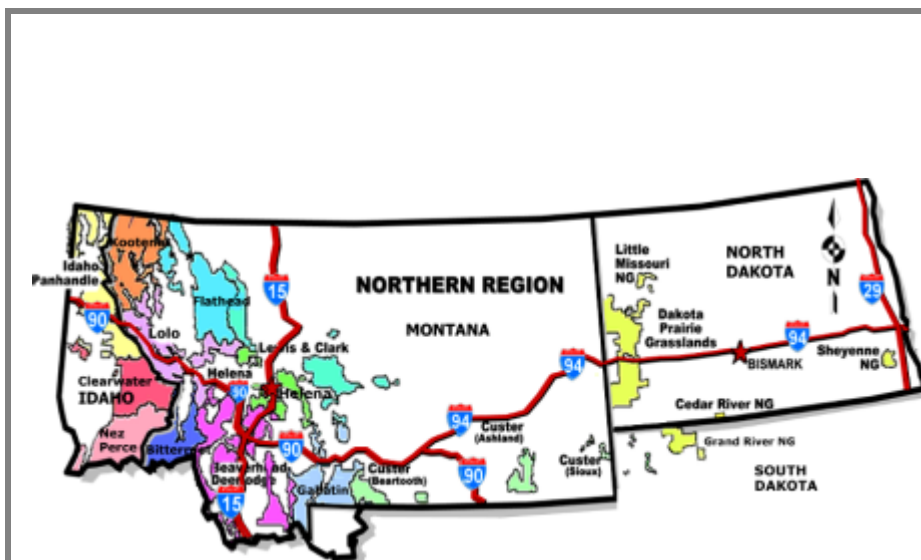
fs.usda.gov/bdnf/

**For information on the
Regional Program, Contact:
406-329-3586**

Email:

jpackard@fs.fed.us

The USDA is an equal opportunity provider and employer.



Northern Region Revenues & Expenditures

Revenue*	
Source	Amount
Interagency Pass	\$54,941
Recreation Fees	\$1,628,455
Special Uses	\$932,260
Total	\$2,615,656

Expenditures	
Source	Amount
Maintenance & Repair	\$1,388,770
Visitor Services	\$842,787
Law Enforcement	\$143,390
Cost of Collections	\$182,857
Habitat Restoration	\$27,101
Fee Agreements	\$7,982
Total	\$2,592,885

*Carryover funds will be used for large projects and the following season's startup costs.