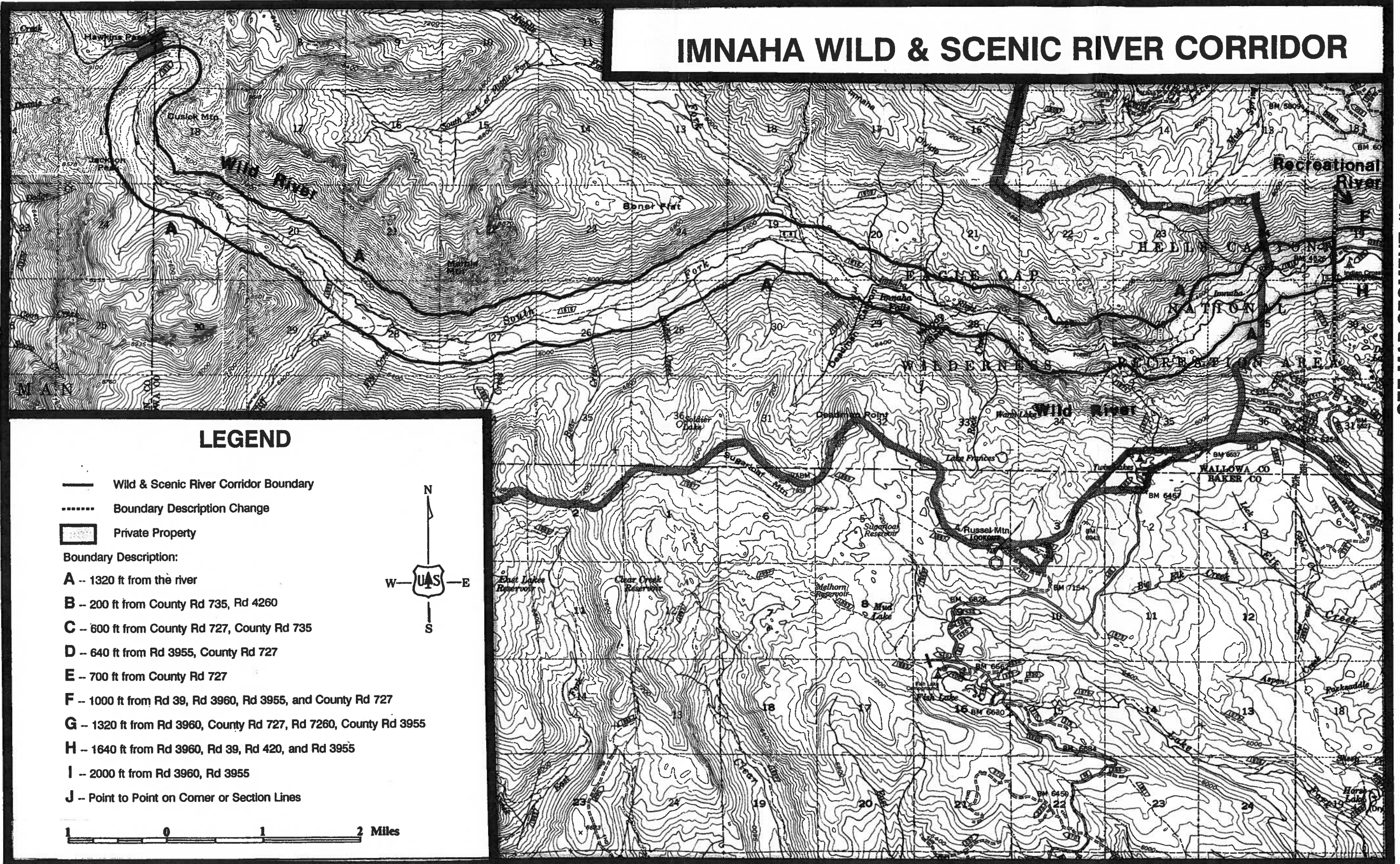





Appendix E

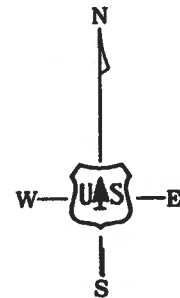
IMNAHA WILD & SCENIC RIVER CORRIDOR

SEE MAP SEGMENT #2



LEGEND

-  Wild & Scenic River Corridor Boundary
 -  Boundary Description Change
 -  Private Property
- Boundary Description:
- A** -- 1320 ft from the river
 - B** -- 200 ft from County Rd 735, Rd 4260
 - C** -- 600 ft from County Rd 727, County Rd 735
 - D** -- 640 ft from Rd 3955, County Rd 727
 - E** -- 700 ft from County Rd 727
 - F** -- 1000 ft from Rd 39, Rd 3960, Rd 3955, and County Rd 727
 - G** -- 1320 ft from Rd 3960, County Rd 727, Rd 7260, County Rd 3955
 - H** -- 1640 ft from Rd 3960, Rd 39, Rd 420, and Rd 3955
 - I** -- 2000 ft from Rd 3960, Rd 3955
 - J** -- Point to Point on Corner or Section Lines



IMNAHA WILD & SCENIC RIVER CORRIDOR



LEGEND

— Wild & Scenic River Corridor Boundary

..... Boundary Description Change

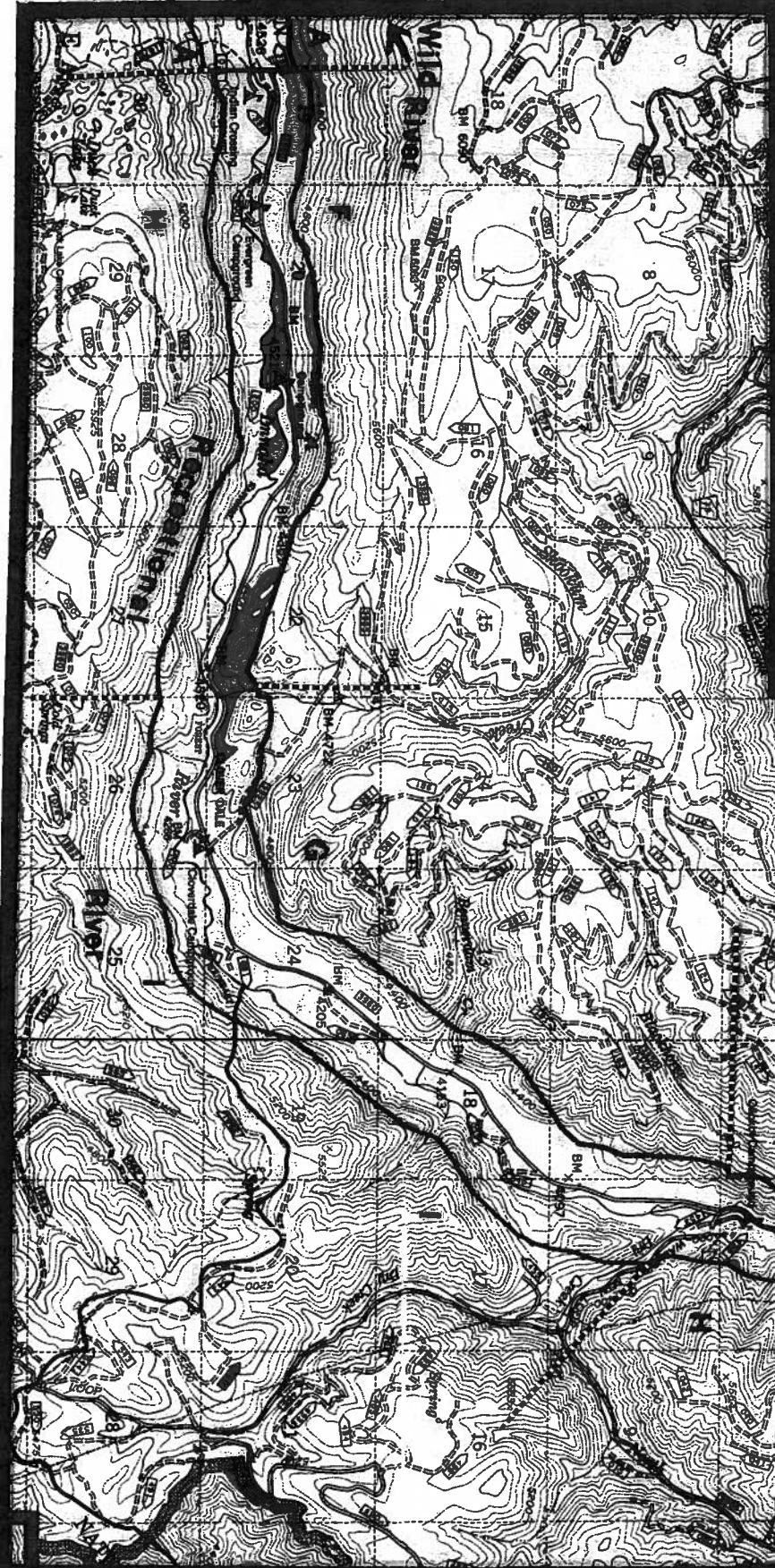
Private Property

Boundary Description:

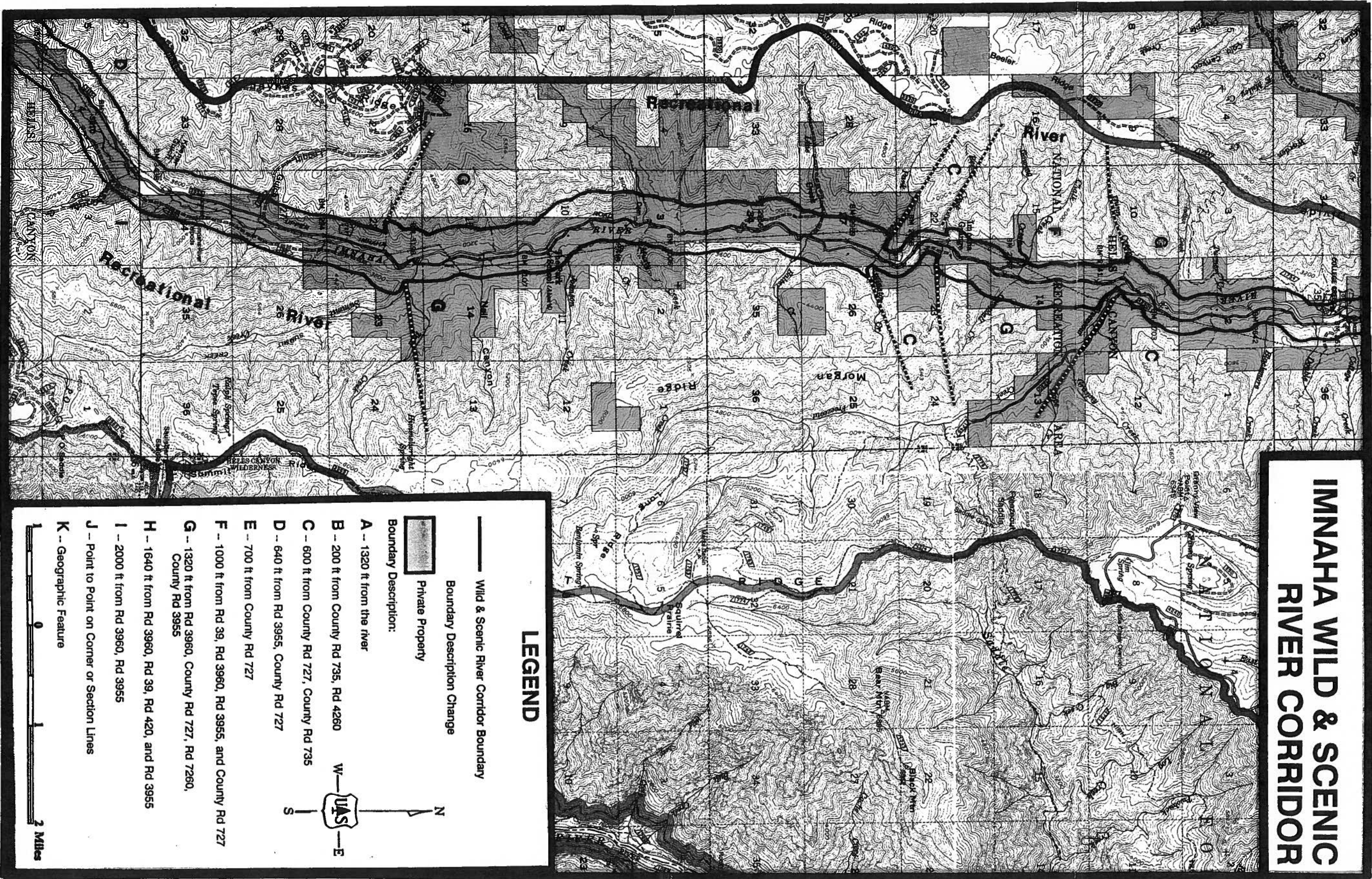
- A -- 1320 ft from the river
- B -- 200 ft from County Rd 735, Rd 4280
- C -- 600 ft from County Rd 727, County Rd 735
- D -- 640 ft from Rd 3955, County Rd 727
- E -- 700 ft from County Rd 727
- F -- 1000 ft from Rd 39, Rd 3960, Rd 3955, and County Rd 727
- G -- 1320 ft from Rd 3960, County Rd 727, Rd 7260, County Rd 3955
- H -- 1640 ft from Rd 3960, Rd 39, Rd 420, and Rd 3955
- I -- 2000 ft from Rd 3960, Rd 3955
- J -- Point to Point on Corner or Section Lines

0 1 2 Miles

SEE MAP SEGMENT #1



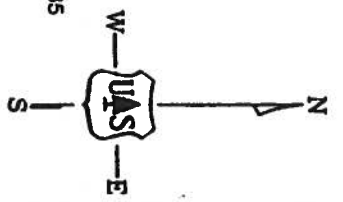
SEE MAP SEGMENT #3



IMNAHA WILD & SCENIC RIVER CORRIDOR

LEGEND

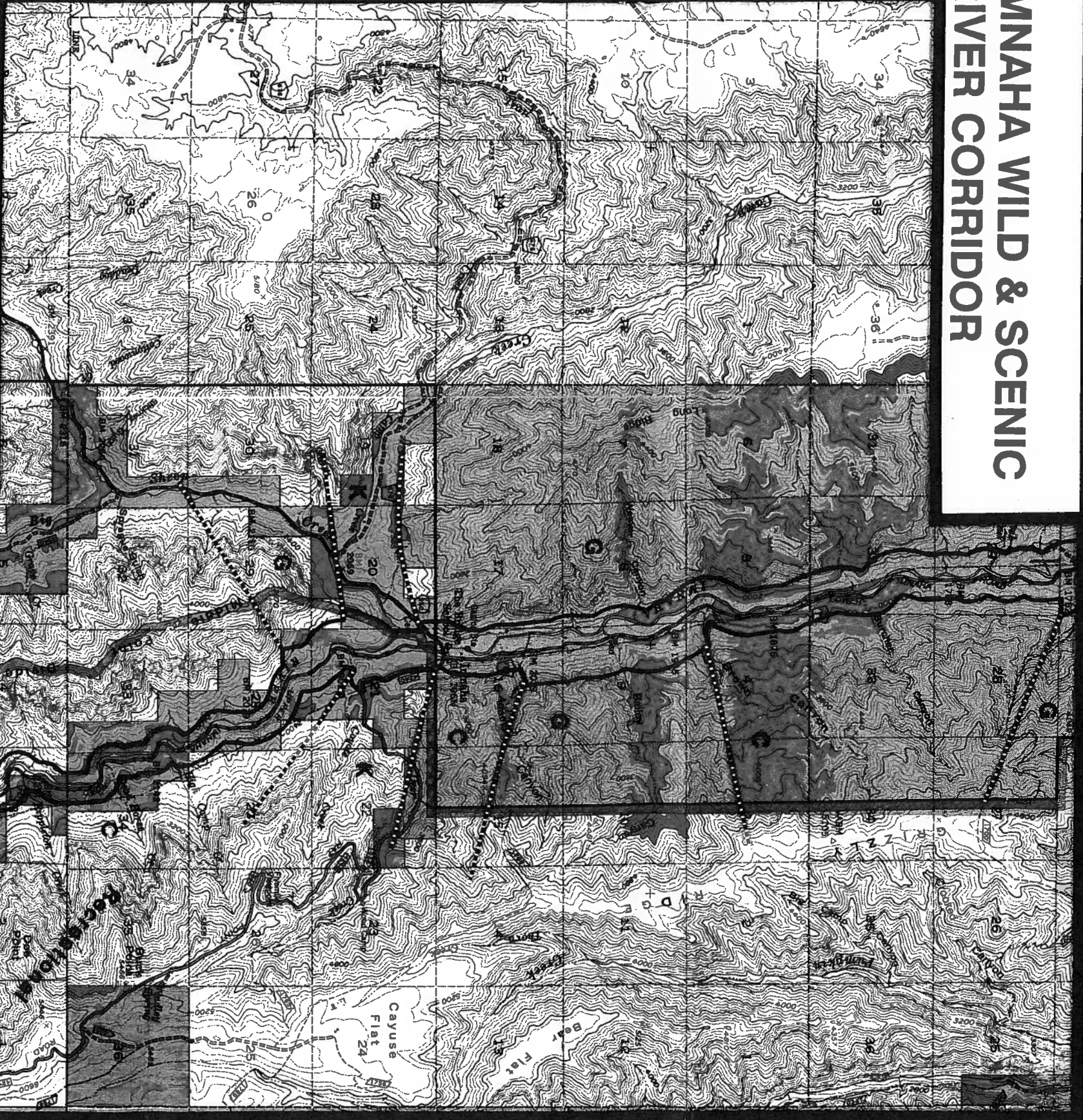
- Wild & Scenic River Corridor Boundary
 - Boundary Description Change
 - ▭ Private Property
- Boundary Description:
- A -- 1320 ft from the river
 - B -- 200 ft from County Rd 735, Rd 4260
 - C -- 600 ft from County Rd 727, County Rd 735
 - D -- 640 ft from Rd 3955, County Rd 727
 - E -- 700 ft from County Rd 727
 - F -- 1000 ft from Rd 39, Rd 3960, Rd 3955, and County Rd 727
 - G -- 1320 ft from Rd 3960, County Rd 727, Rd 7260, County Rd 3955
 - H -- 1640 ft from Rd 3960, Rd 39, Rd 420, and Rd 3955
 - I -- 2000 ft from Rd 3960, Rd 3955
 - J -- Point to Point on Corner or Section Lines
 - K -- Geographic Feature



IMNAHA WILD & SCENIC RIVER CORRIDOR

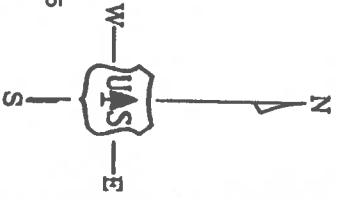
SEE MAP SEGMENT #5

MAP SEGMENT #4



LEGEND

- Wild & Scenic River Corridor Boundary
 - Boundary Description Change
 - ▭ Private Property
- Boundary Description:
- A -- 1320 ft from the river
 - B -- 200 ft from County Rd 735, Rd 4260
 - C -- 600 ft from County Rd 727, County Rd 735
 - D -- 640 ft from Rd 3955, County Rd 727
 - E -- 700 ft from County Rd 727
 - F -- 1000 ft from Rd 39, Rd 3960, Rd 3955, and County Rd 727
 - G -- 1320 ft from Rd 3960, County Rd 727, Rd 7260, County Rd 3955
 - H -- 1640 ft from Rd 3960, Rd 39, Rd 420, and Rd 3955
 - I -- 2000 ft from Rd 3960, Rd 3955
 - J -- Point to Point on Corner or Section Lines
 - K -- Geographic Feature



SEE MAP SEGMENT #3

IMNAHA WILD & SCENIC RIVER CORRIDOR



LEGEND

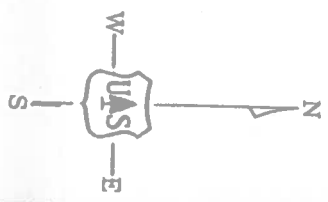
— Wild & Scenic River Corridor Boundary

- - - Boundary Description Change

▨ Private Property

Boundary Description:

- A -- 1320 ft from the river
- B -- 200 ft from County Rd 735, Rd 4260
- C -- 600 ft from County Rd 727, County Rd 735
- D -- 640 ft from Rd 3955, County Rd 727
- E -- 700 ft from County Rd 727
- F -- 1000 ft from Rd 39, Rd 3960, Rd 3955, and County Rd 727
- G -- 1320 ft from Rd 3960, County Rd 727, Rd 7260, County Rd 3955
- H -- 1640 ft from Rd 3960, Rd 39, Rd 420, and Rd 3955
- I -- 2000 ft from Rd 3960, Rd 3955
- J -- Point to Point on Corner or Section Lines



SEE MAP SEGMENT #4