



OBJECTIVE

- Reduce basal area in pine plantations that are between the ages of 15 to 55 years old to 55-70 square feet per acre. These stands were either missed in the EIS or were too young at the time the EIS was signed.
- Desired Future Conditions for the proposed pine plantations is hardwood forest or hardwood woodlands. All proposed plantations are in area 1.
- Where present, retain an overstory which primarily consists of dominant and co-dominant hardwoods

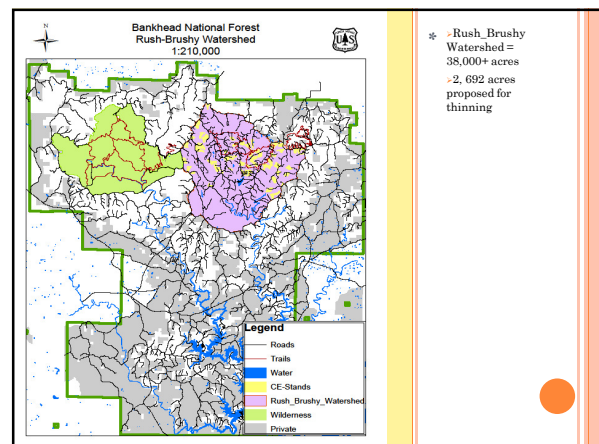
PURPOSE

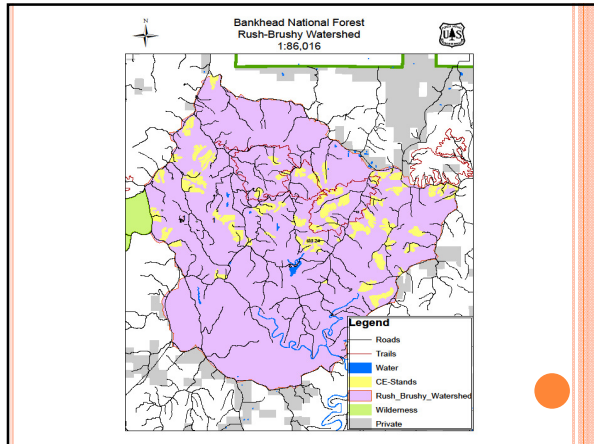
- Restore native systems to improve function and resiliency
- Improve fire regimes and condition classes
- Improve wildlife habitat
- Improve growth and vigor of the stand

CATEGORY 6

- *“Timber stand and/or wildlife habitat improvement activities that do not include the use of herbicides or do not require more than one mile of low standard road construction: (ii) Thinning or brush control to improve growth or to reduce fire hazard including the opening of an existing road to a dense timber stand: ...”*

THINNINGS - 15-55 YEAR OLD LOBLOLLY PINE STANDS:
 1) GIS DATA 2) CISC DATA AND MAPS 3) OLD PLANTING RECORDS.
 (EACH STAND WILL BE VERIFIED USING AERIAL PHOTOS AND/OR GROUND TRUTHING DURING STAND LAYOUT)



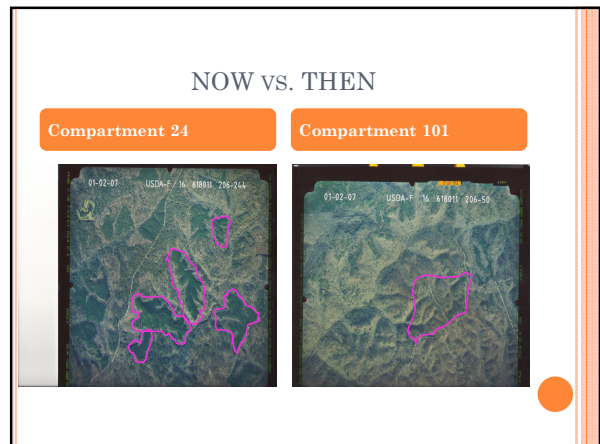
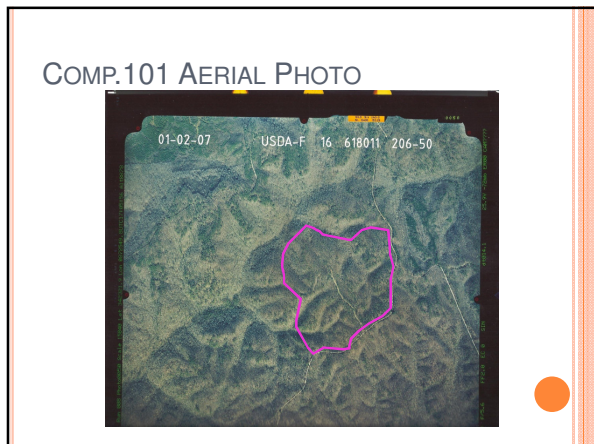
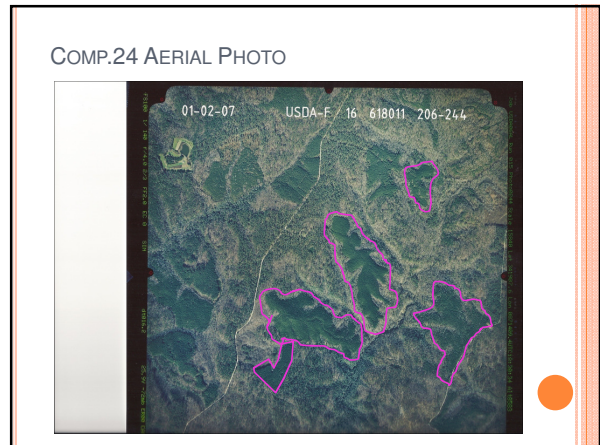
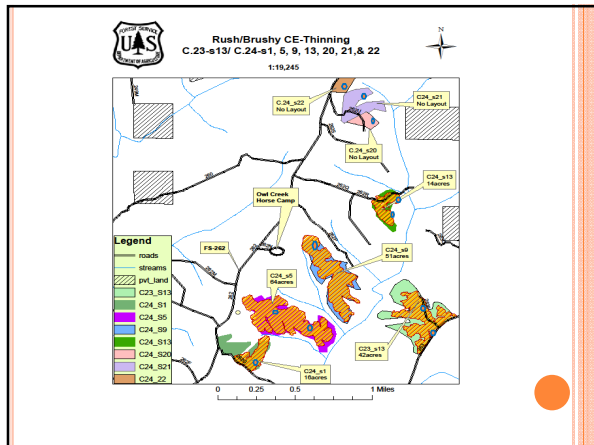


GIS ACRES VS. GROUND ACRES

COMP	STAND	GIS_ACRES	AGE_YEAR	MGY_TYP	E	STATUS	Ground_Acres
15	5	36.961221	1960	21		No Layout	
15	6	18	1960	21		No Layout	
15	8	24.88028	1960	21		No Layout	
16	3	33.082375	1993	31		Lay Out	29
17	14	26.443428	1988	31		Lay Out	43
17	17	46.790587	1993	31		Lay Out	14
18	3	81.534175	1994	31		No Layout	
18	13	67.581307	1995	31		Lay Out	
18	16	28.831487	1985	31		No Layout	59
18	17	59.862879	1995	31		No Layout	
23	13	72.647677	1993	31		Lay Out	42
24	1	28.949894	1981	31		Marked-LTM	36
24	5	71.148523	1995	31		Marked-LTM	64
24	9	59.772009	1995	31		Marked-LTM	51
24	13	17.431477	1995	31		Marked-LTM	14
24	20	8	1961	31		No Layout	
24	21	24.443379	1981	31		No Layout	
24	22	10.04018	1961	31		No Layout	
36	3	39.179145	1994	31		Lay Out	24
36	15	15	1990			Lay Out	10

aces looked
808.835211 at on ground

366 acres w/Layout to be cut





EIS THINNING - COMPARTMENT 30 – STAND 2
FS 262 ROAD

STAND 14
IMPROVED WILDLIFE HABITAT/ IMPROVED
GROWTH, VIGOR, AND HEALTH OF THE STAND /
AND REDUCED FIRE HAZARD (2001-2012)

COMPARTMENT 24 – STAND 5 – 64 ACRES
DENSE OVERSTOCKED LOBLOLLY PINE STAND
PLANTED FY 1995 (AVG. 140 BA)

DENSE OVER STOCKED LOBLOLLY PINE STANDS
AVERAGE 90-170+ BA

LOBLOLLY PINE STANDS (15-55 YEARS OLD)
COMPARTMENT 36 – STAND 15 (AVG. 155BA)