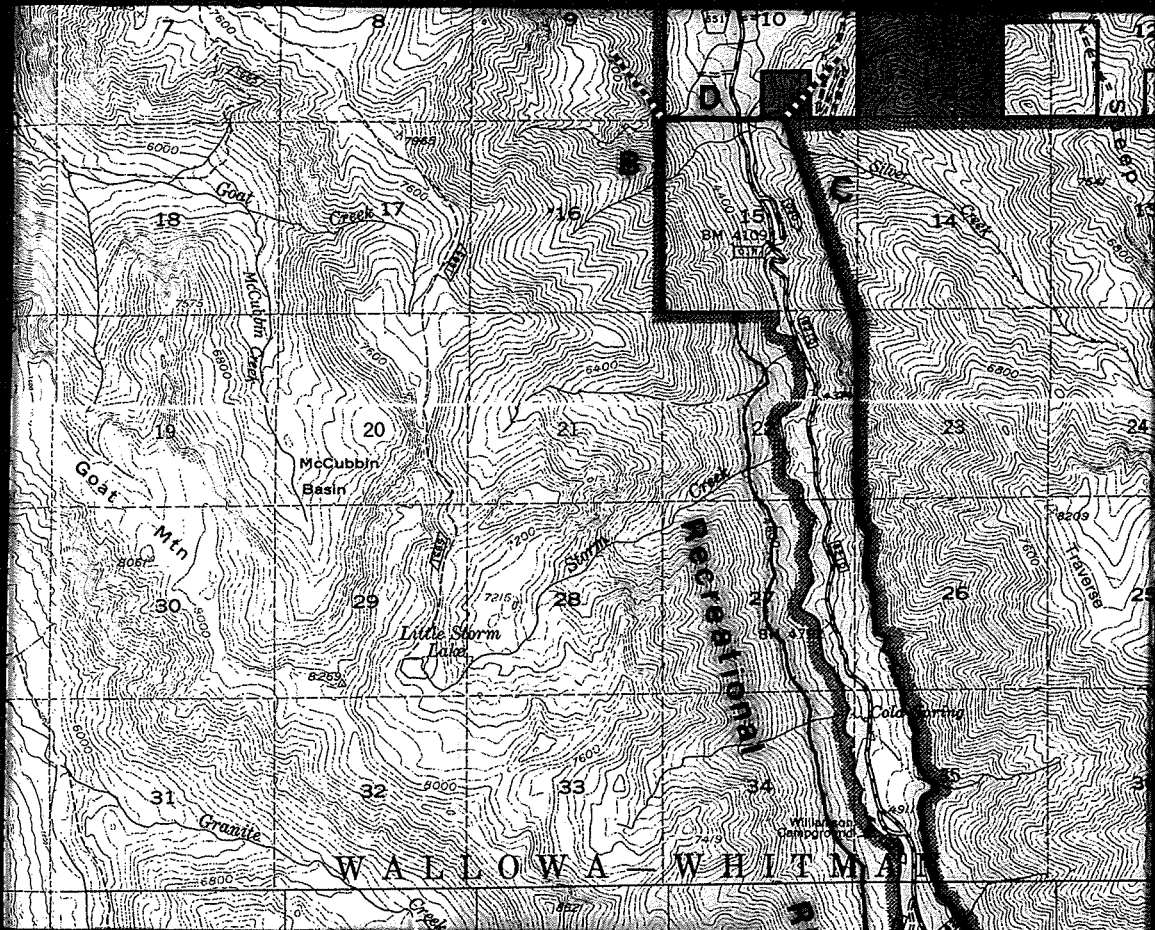



Appendix E

LOSTINE WILD & SCENIC RIVER CORRIDOR




LEGEND

 Wild & Scenic River Corridor Boundary

 Boundary Description Change

 Private Land

 Eagle Cap Wilderness Boundary

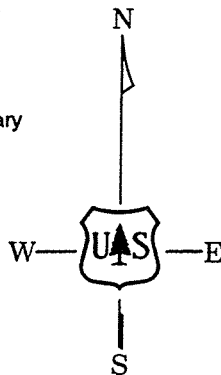
Boundary Description:

A - 1,320 ft. from the river

B - 1,000 ft. from the river

C - Eagle Cap Wilderness Boundary

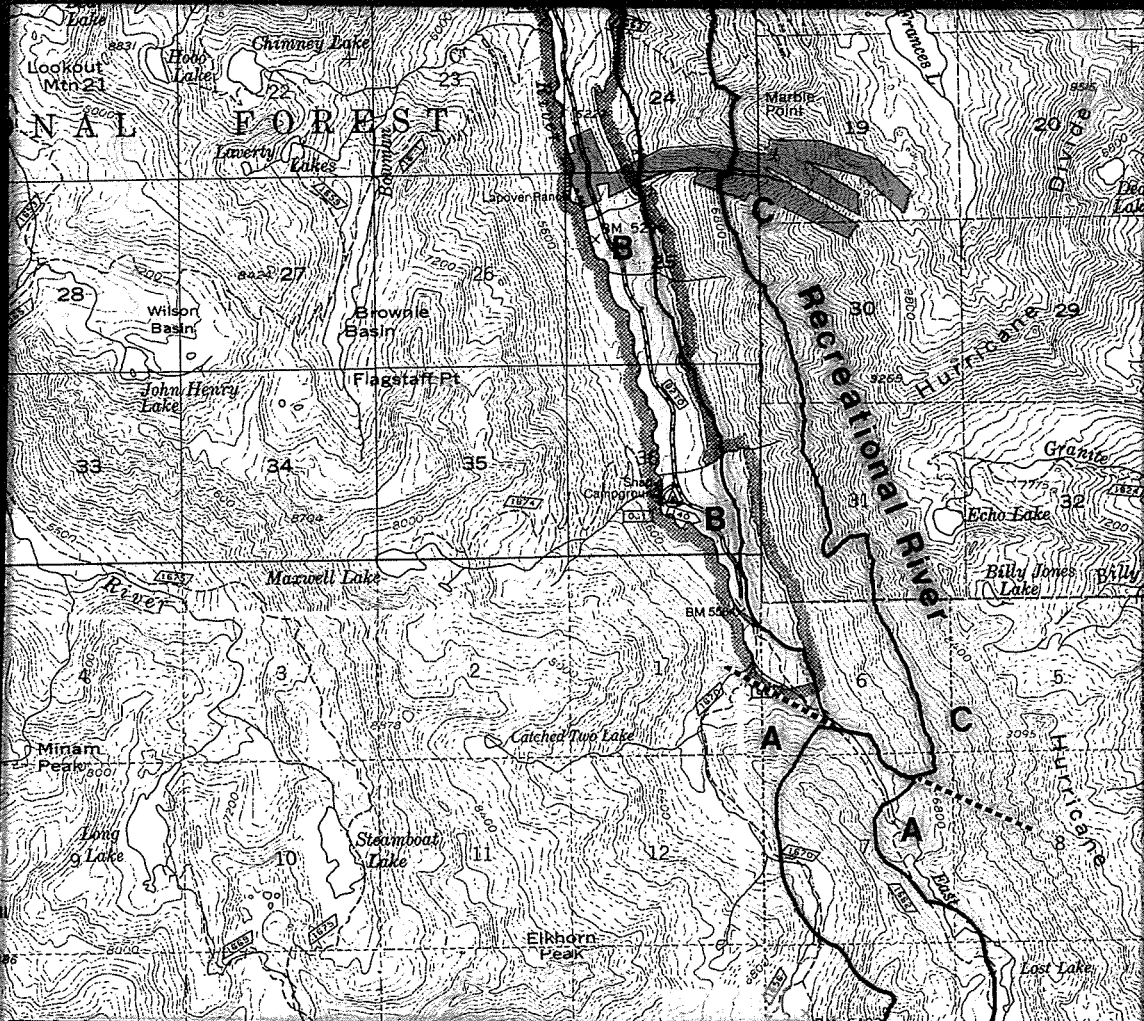
D - Section Line







SEE MAP SEGMENT #2

MAP SEGMENT #1

LOSTINE WILD & SCENIC RIVER CORRIDOR



LEGEND

-  Wild & Scenic River Corridor Boundary
-  Boundary Description Change
-  Private Land
-  Eagle Cap Wilderness Boundary

Boundary Description:

- A** - 1,320 ft. from the river
- B** - 1,000 ft. from the river
- C** - Eagle Cap Wilderness Boundary
- D** - Section Line

