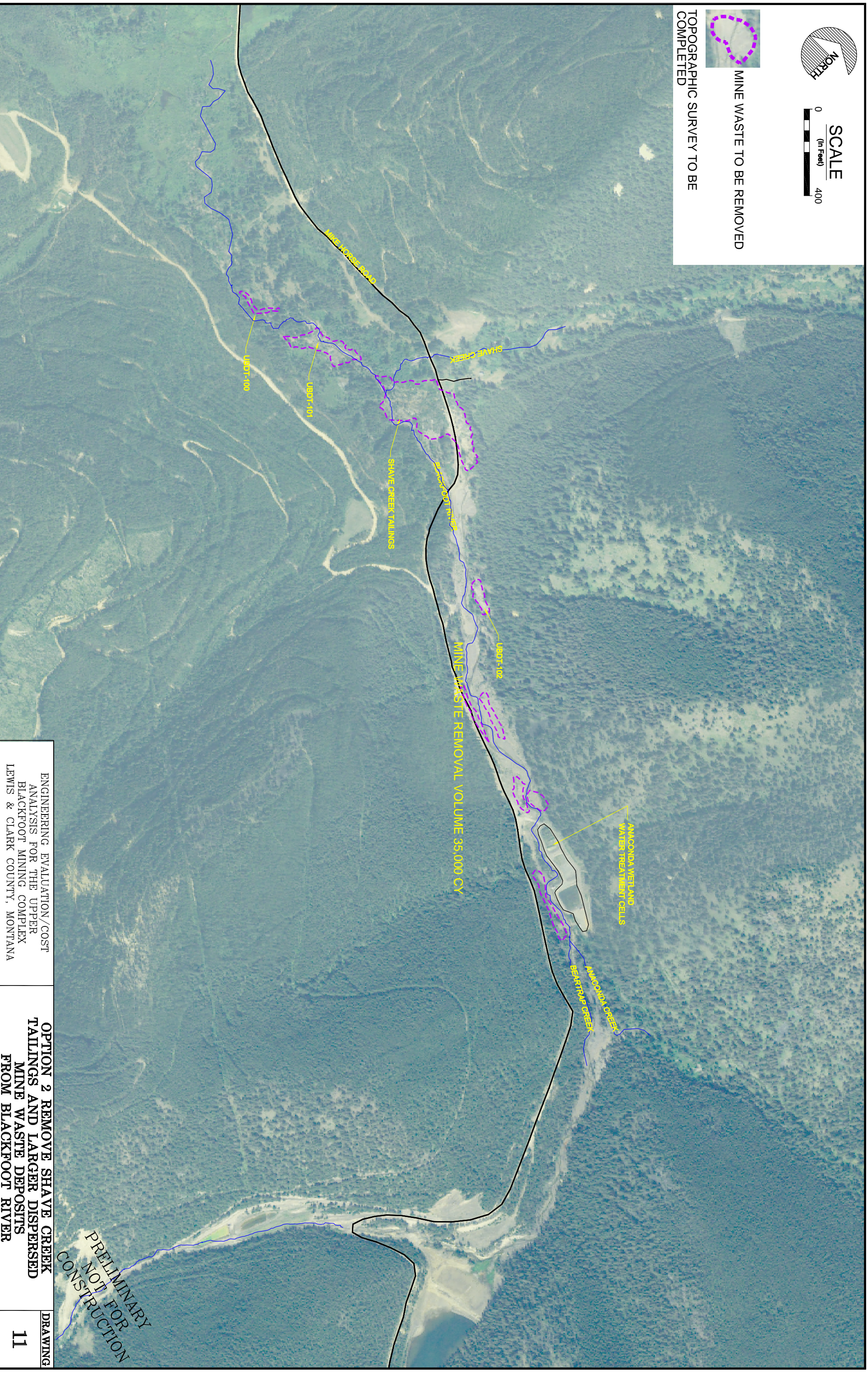




SCALE  
0 (in Feet) 400



MINE WASTE TO BE REMOVED  
TOPOGRAPHIC SURVEY TO BE COMPLETED



ENGINEERING EVALUATION/COST ANALYSIS FOR THE UPPER BLACKFOOT MINING COMPLEX LEWIS & CLARK COUNTY, MONTANA

OPTION 2 REMOVE SHAVE CREEK TAILINGS AND LARGER DISPERSED MINE WASTE DEPOSITS FROM BLACKFOOT RIVER

DRAWING

11

PRELIMINARY  
NOT FOR  
CONSTRUCTION