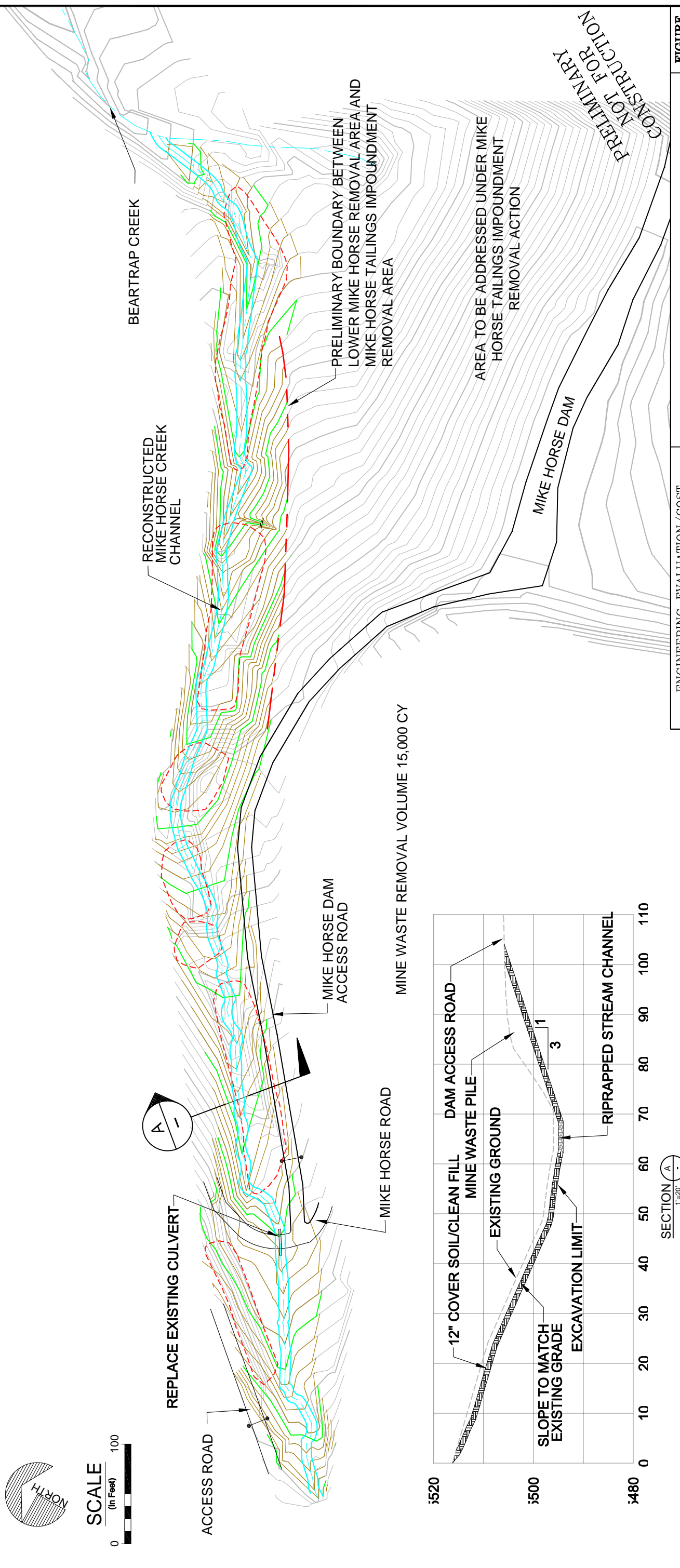
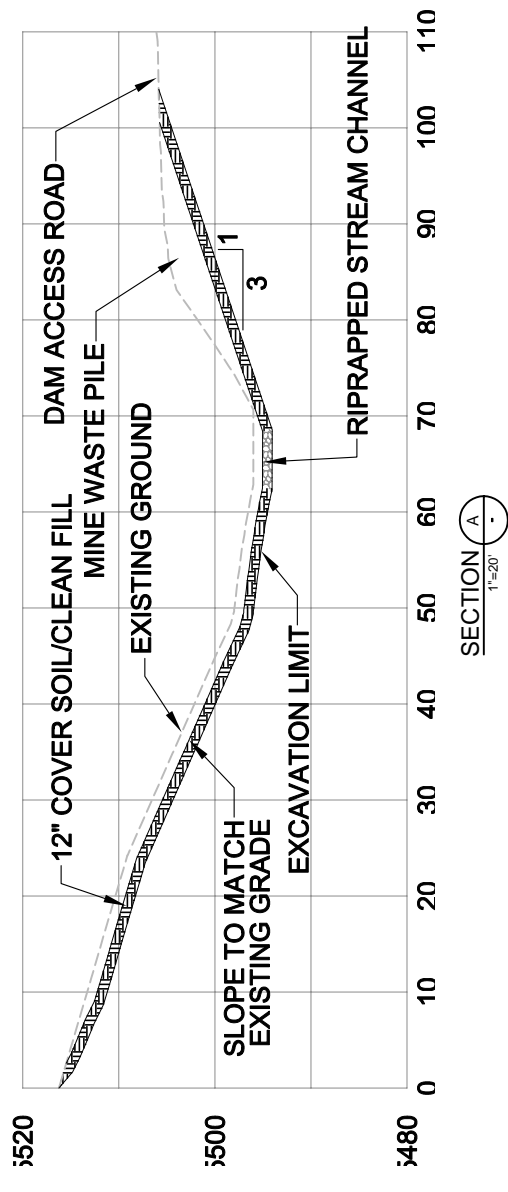


PROFILE 1"=100' MIKE HORSE CREEK CHANNEL PROFILE



MINE WASTE REMOVAL VOLUME 15,000 CY



SECTION A-A 1"=20'

ENGINEERING EVALUATION/COST ANALYSIS FOR THE UPPER BLACKFOOT MINING COMPLEX LEWIS & CLARK COUNTY, MONTANA

FIGURE 10 LOWER MIKE HORSE CREEK - OPTION 3 TOTAL MINE WASTE REMOVAL AND PLACEMENT IN ON-SITE REPOSITORY