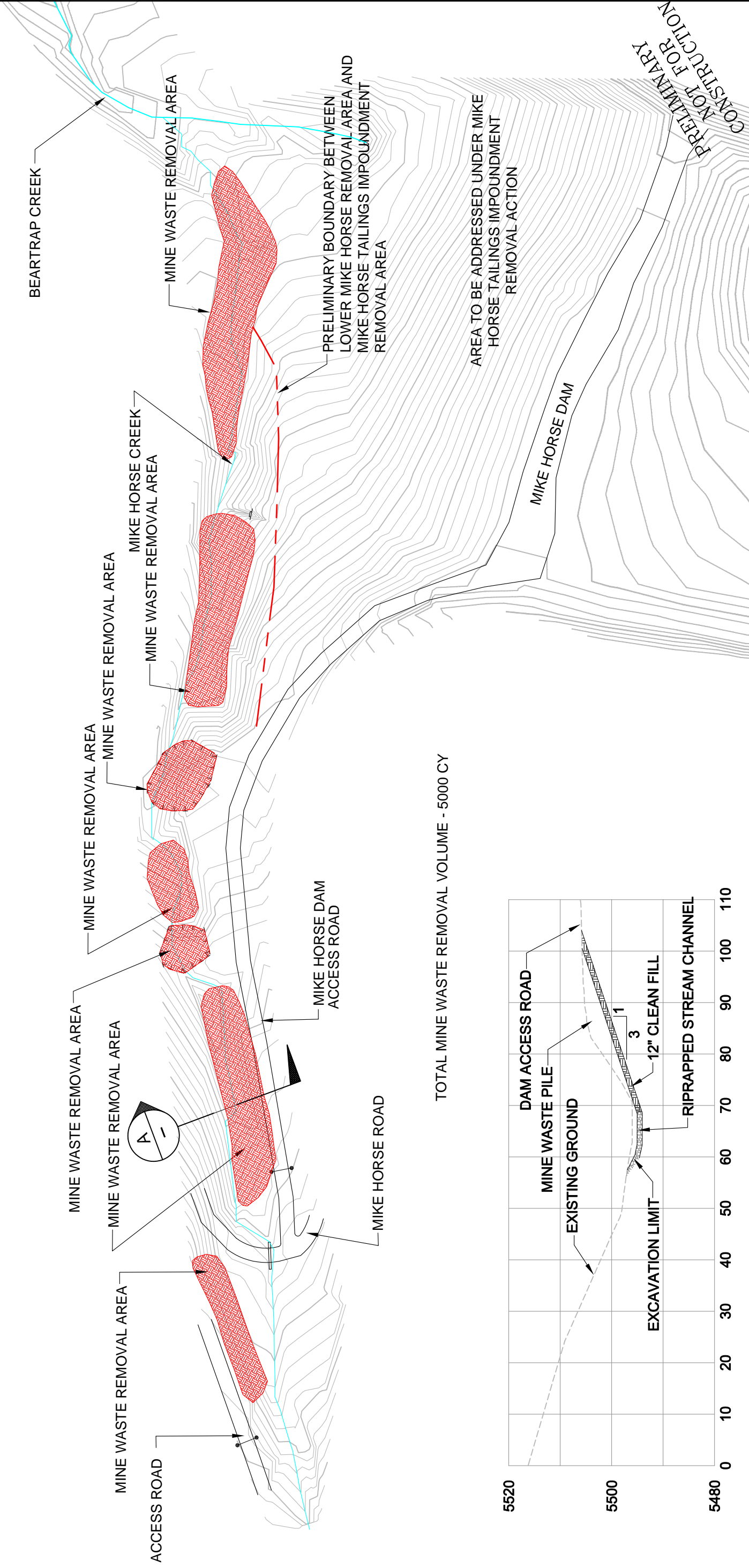
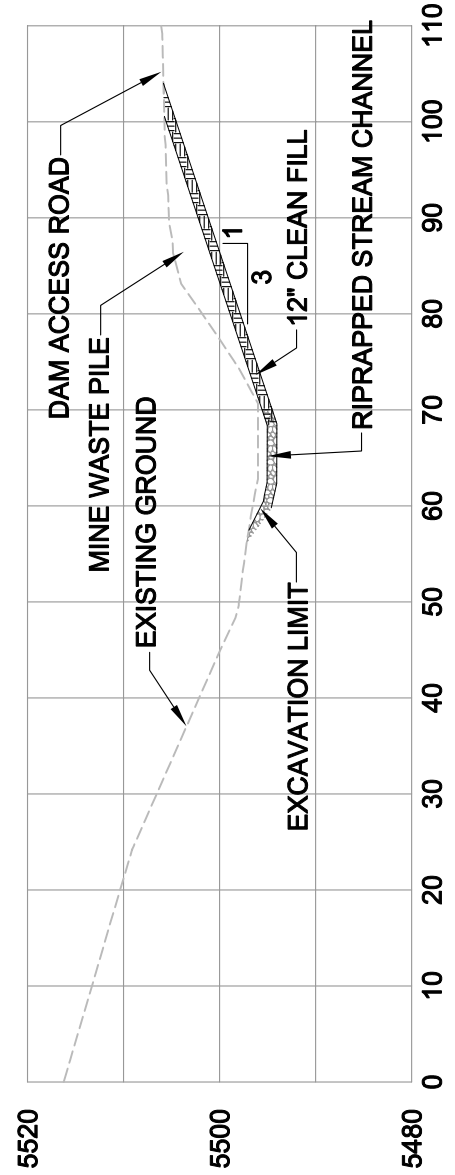




SCALE
 (in Feet)
 0 100



TOTAL MINE WASTE REMOVAL VOLUME - 5000 CY



SECTION **A**
 1"=20'

ENGINEERING EVALUATION/COST
 ANALYSIS FOR THE UPPER
 BLACKFOOT MINING COMPLEX
 LEWIS & CLARK COUNTY, MONTANA

**LOWER MIKE HORSE CREEK - OPTION 2
 PARTIAL MINE WASTE REMOVAL**

FIGURE
9