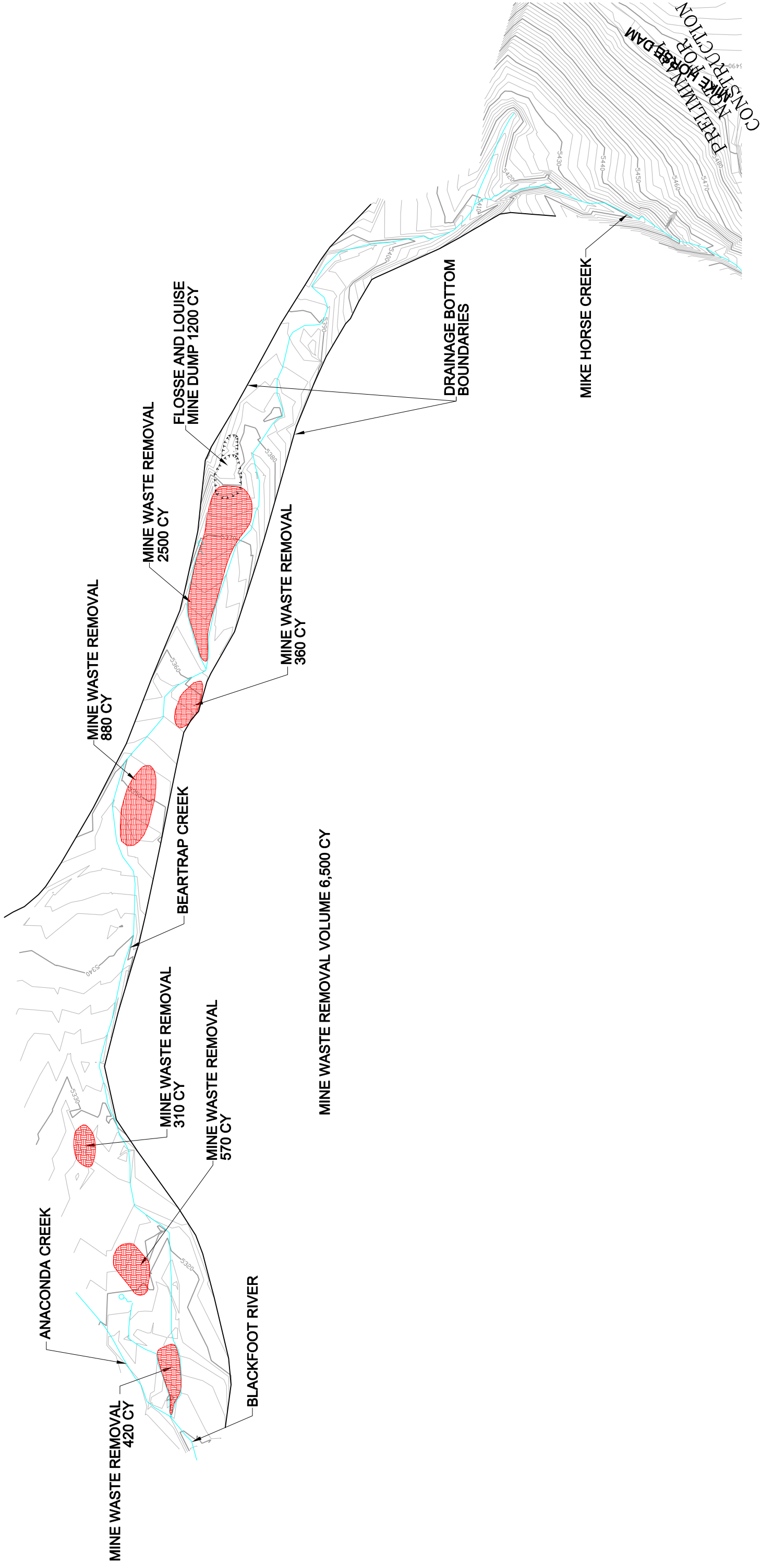




SCALE



ENGINEERING EVALUATION/COST  
ANALYSIS FOR THE UPPER  
BLACKFOOT MINING COMPLEX  
LEWIS & CLARK COUNTY, MONTANA

**BEARTRAP CREEK - OPTION 2  
REMOVE CONCENTRATED TAILINGS  
AND PLACE IN ONSITE REPOSITORY**

DRAWING  
**6**