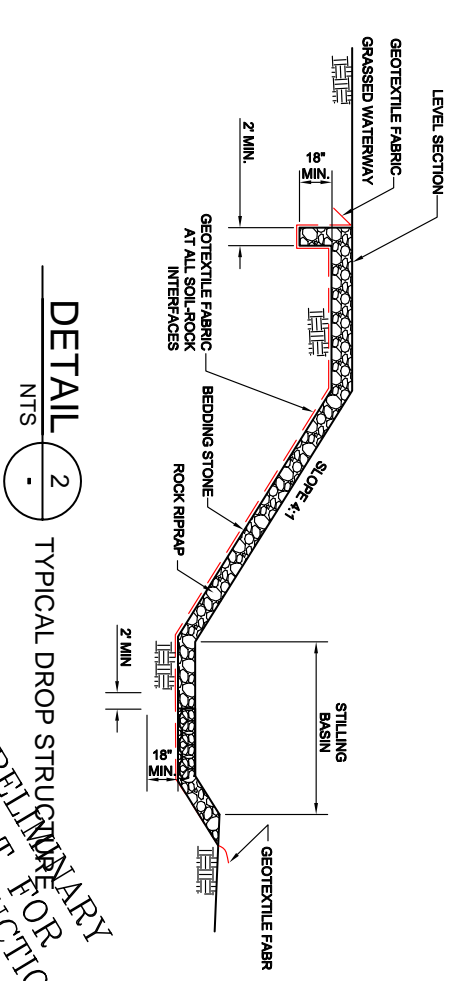
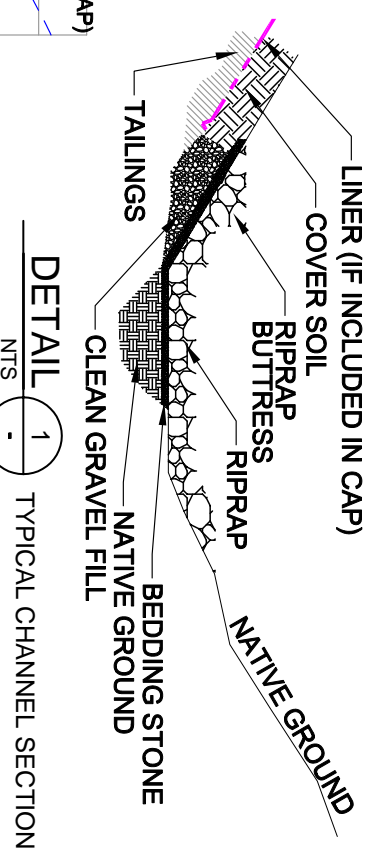
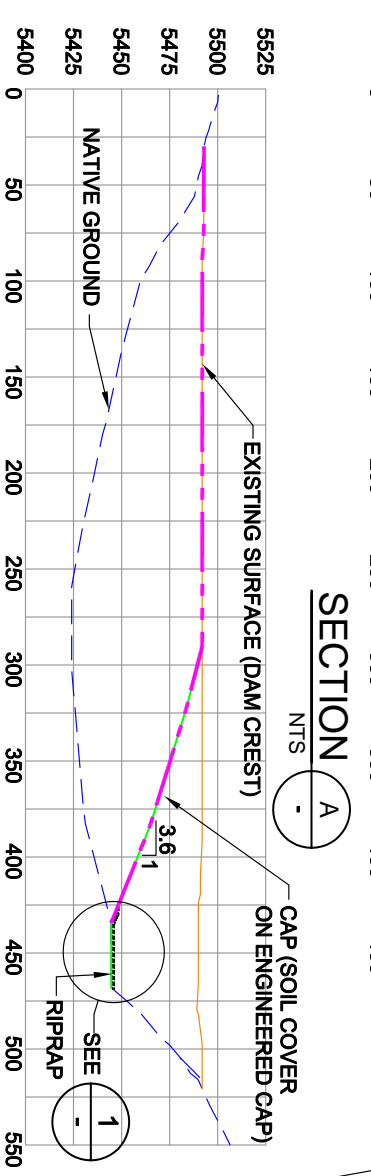
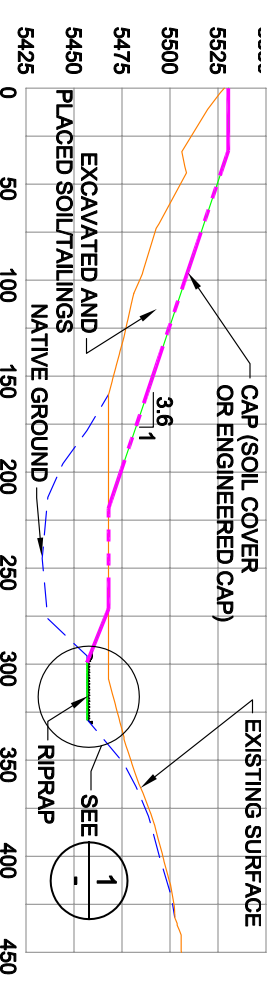
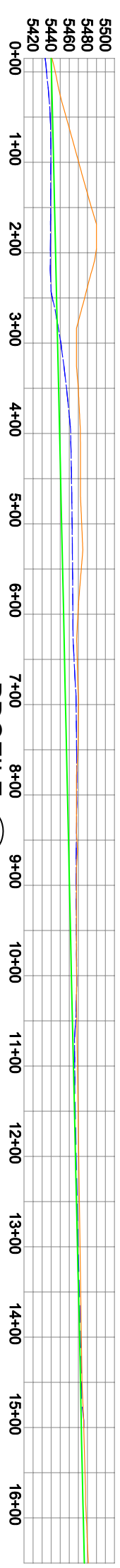
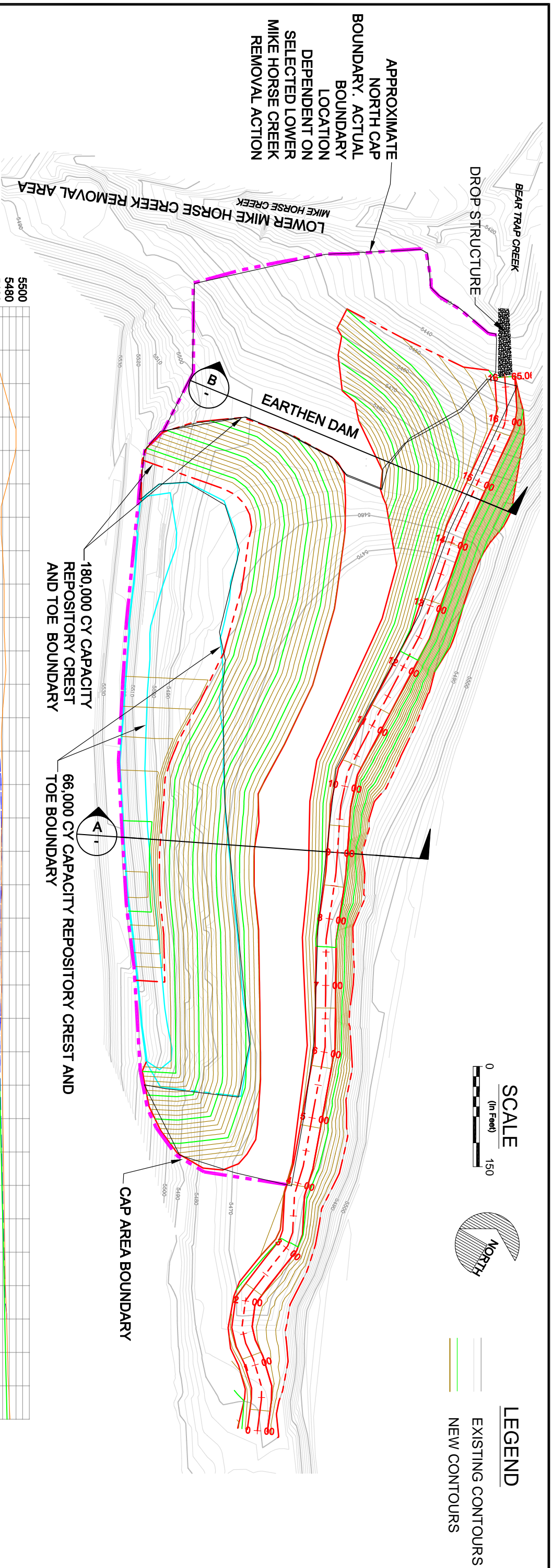


**LEGEND**

EXISTING CONTOURS

NEW CONTOURS



**PRELIMINARY  
NOT FOR  
CONSTRUCTION**

ENGINEERING EVALUATION/COST ANALYSIS FOR THE UPPER BLACKFOOT MINING COMPLEX LEWIS & CLARK COUNTY, MONTANA

**TAILINGS IMPOUNDMENT - OPTION 3**  
PARTIAL REMOVAL OF DAM AND IMPOUNDED TAILINGS WITH ENGINEERED BEARTRAP CREEK CHANNEL

**DRAWING 3**