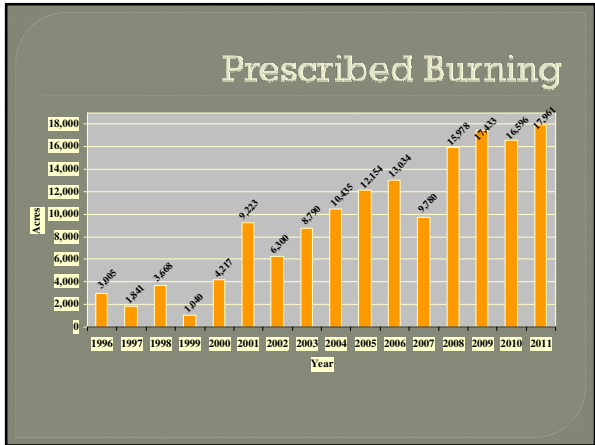


# Bankhead National Forest

## 2011 Accomplishment Report

# Bankhead National Forest Fire Program

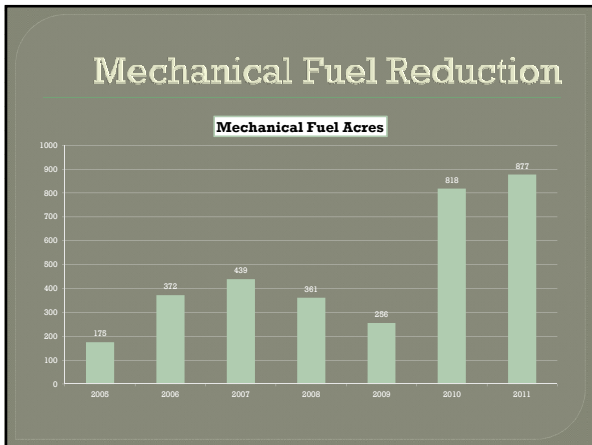
## 2011 Accomplishments



# Growing Season Burns

- Oh'Bryans



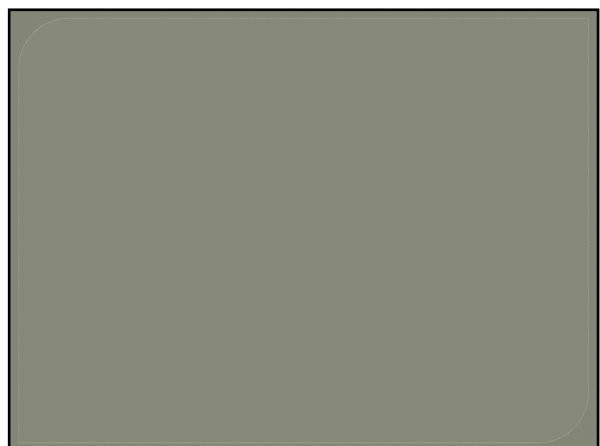


### Wildland Fire

- 2 Wildfires
- 1,493 acres

### Fire Prevention Programs

- Smokey Bear Prevention Programs – 4 area schools
- 4 local parades
- FAWN program
- Huntsville Fire Awareness Day
- Alabama A&M University Job Fair
  - Message – Wildland Fire Prevention & the Role of Good Fire through Prescribed Burning








**2011 Timber Sale Program**

1256 acres  
16,488 CCF removed

1. Rockhouse (4/22/11)
2. Beasley Bend (6/27/11)
3. Wilburn Ford (9/19/11)

-Forest Health and Restoration Project  
-Rockhouse/Hoghouse EA  
-Grindstone/Mill/Inman EA



**Northwest Salvage Timber Sale**

April 20<sup>th</sup> and 27<sup>th</sup>  
Sold 8/15/11

+ 1200 wilderness acres  
+ 630 non-wilderness acres

238 treatable acres  
1,457 CCF removed

Mitigation measures


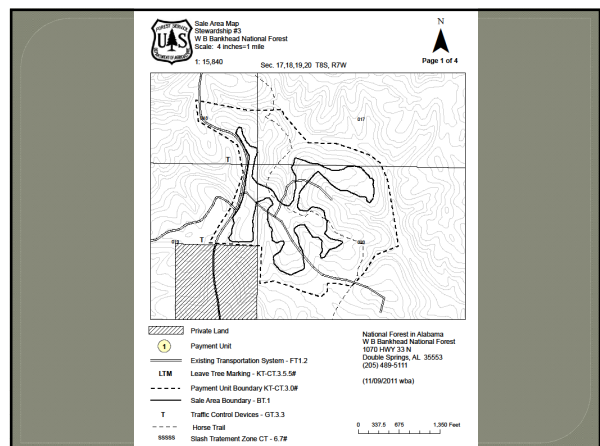
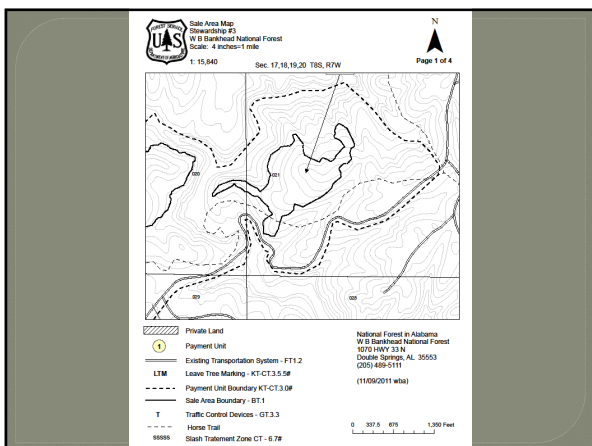


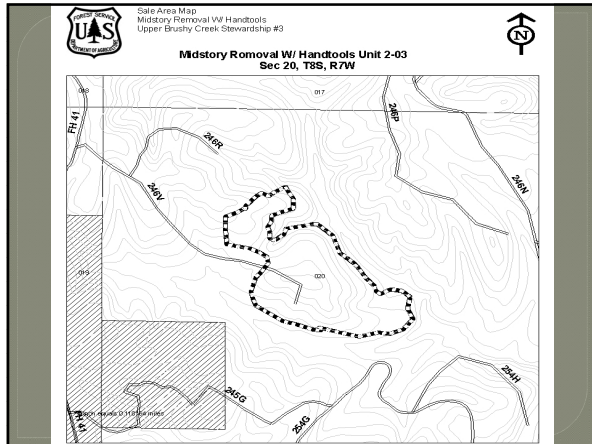
04/21/2011

**Proposed 2012 Timber Sale Program**

13,000 CCF proposed target (SO)  
1300 acres to be treated

-Forest Health and Restoration Project  
-Rockhouse/Hoghouse EA  
-Grindstone/Mill/Inman EA



### Bankhead National Forest Silviculture Program

- Pre-commercial thinning – 511 acres
- Site preparation & planting – 129 acres shortleaf and longleaf pine

### Non-native Invasive Plant Control

- 2011 accomplishments – 311 acres
- 2012 – Forest Wide Environmental Assessment for NNIS Plant control on National Forests in Alabama

### Bankhead National Forest - Wildlife, Fish & Rare Plant Program

2011 Accomplishments

### Habitat Improvements

- Aquatic Habitat Improvements
  - Fish Structures & Renew Our Rivers (Debris Removal) on Smith Lake
  - 150 acres + 11 miles of stream





### Aquatic Habitat Improvements – ARRA Projects

- Alford Springs Fish Passage – 0.3 stream miles
- Basin Creek Fish Passage – 2.8 stream miles



### Habitat Improvements

- Terrestrial Habitat Improvements
  - Midstory Removal – Woodland Restoration, 491 acres
  - FS Wildlife Opening Management, 127 acres
  - WFF Wildlife Opening Management, 98 acres
  - Corinth Wetland Restoration
  - Indian Tomb Hollow Glade Restoration



### Limestone Cedar Glade Indian Tomb Hollow



### Habitat Improvements

- Erosion Control (Soil & Water) Projects
  - Upper Bear Creek, 15 acres improved & closed to illegal use
  - Rush Creek, 8 acres closed to illegal use
  - Falls City-Smith Lake, 50 acres closed to illegal use



### Feral Swine Control

- Trapping & Shooting efforts
  - 20 feral swine removed, July – August
  - Feral Swine Hunts on Black Warrior WMA
- Extended USDA Wildlife Services Agreement
- Educational Efforts – News Releases, Interviews, Hunting Regulations (P. 53), Website: [www.outdooralabama.com/hogs](http://www.outdooralabama.com/hogs)

## Quail Emphasis Areas

- 2011 –
- NNIS control – 49 acres
- Prescribed Burning – 4,542 acres
- Thinning – Rockhouse Sale, 367 acres
- 9,727 acres = Black Pond & Inmanfield Areas



## Education & Interpretation

- Annual Kids Fishing Derby
- Annual FAWN Program – All 6<sup>th</sup> Graders
- Hunter Education Courses
- Shortleaf Pine Symposium, Bankhead Tour
- North Alabama Birding Trail Signage & brochures
- School groups, etc.

## Monitoring

- Monitoring & evaluation provide information to determine whether programs and projects are meeting National Forests in Alabama Forest Plan direction.

Revised Land & Resource Management Plan for the National Forests in Alabama (Forest Plan)

## Management Indicator Species

- Management Indicator Species – Population trends and habitats of Management Indicator Species will be monitored to help indicate effects of national forest management within selected communities.
  - For Bankhead: Hooded warbler, brown-headed nuthatch, scarlet tanager, prairie warbler, Swainson's warbler, Acadian flycatcher, wood thrush, pileated woodpecker, white-tailed deer, Eastern wild turkey, bobwhite quail

Revised Land & Resource Management Plan for the National Forests in Alabama (Forest Plan)

## Annual Monitoring

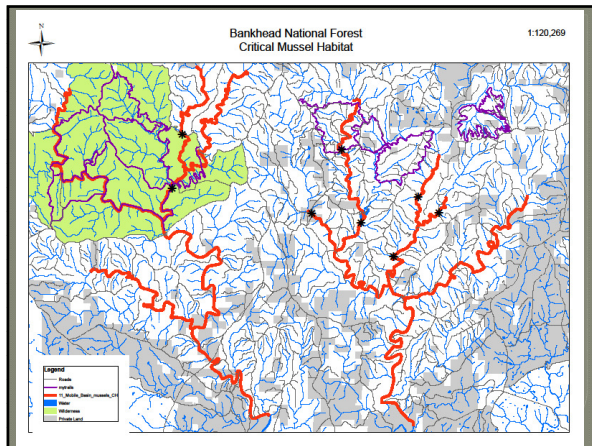
- 132 Bird Point Count Surveys
- Deer Spotlight Surveys, 2 routes
- Acoustic Transect Surveys – Bats, 2 routes
- Bat Hibernacula Surveys & White-nose syndrome surveillance

## 2011 Additional Monitoring

- Cerulean Warbler Surveys
- Bat Mist-netting & harp trapping surveys
- Green Salamander Surveys
- Mussel Surveys (2012)








### Field Surveys and Biological Evaluations (PETS species)

- 10 biological evaluations and associated field surveys
- 4,319 acres of additional field surveys



### Rush Darter

- Federally listed as Endangered, August 9, 2011
- Critical Habitat Designation Proposed
  - Clear Creek Watershed (Mill, Doe & Wildcat)

