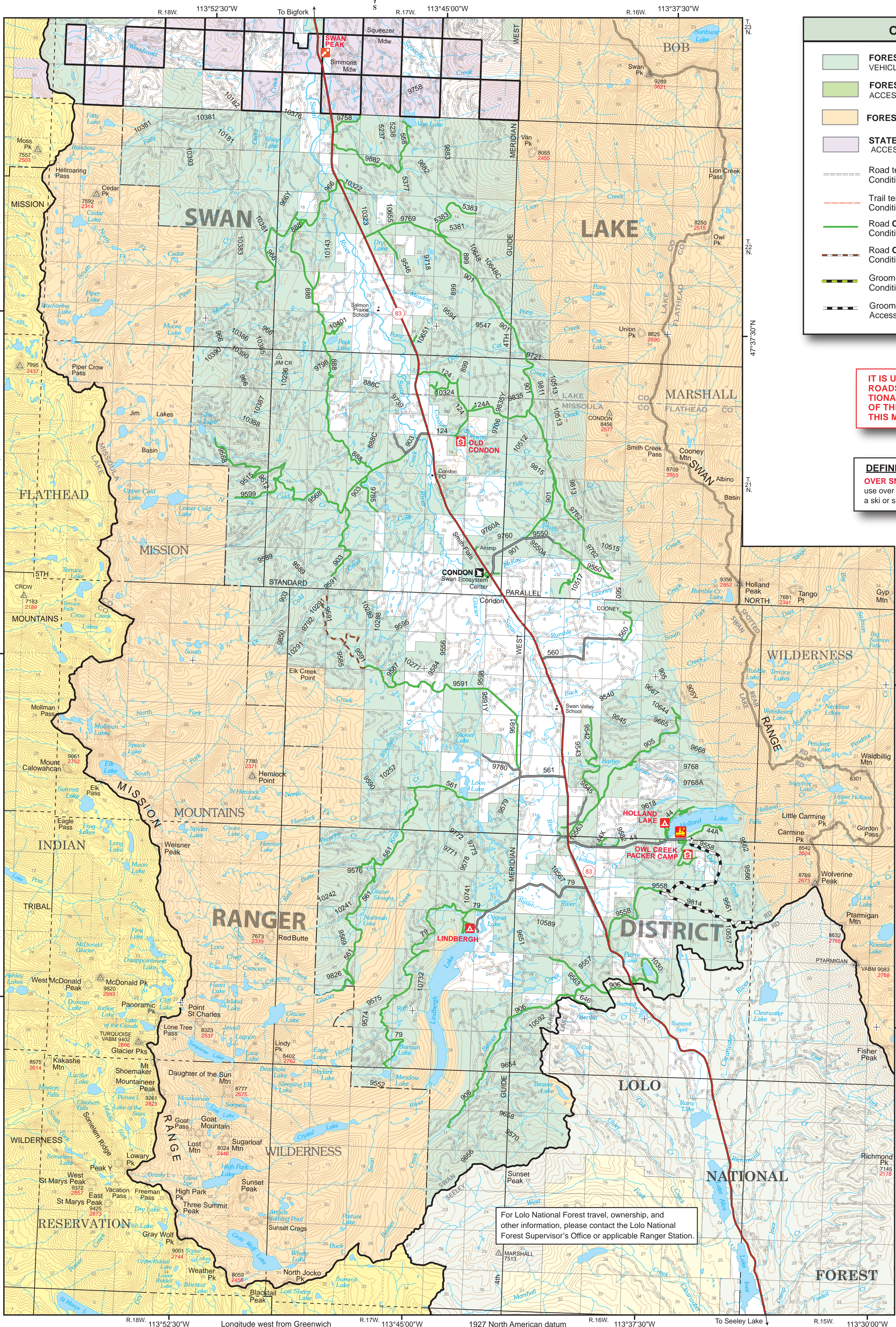


**SOUTH HALF
SWAN LAKE RANGER DISTRICT**



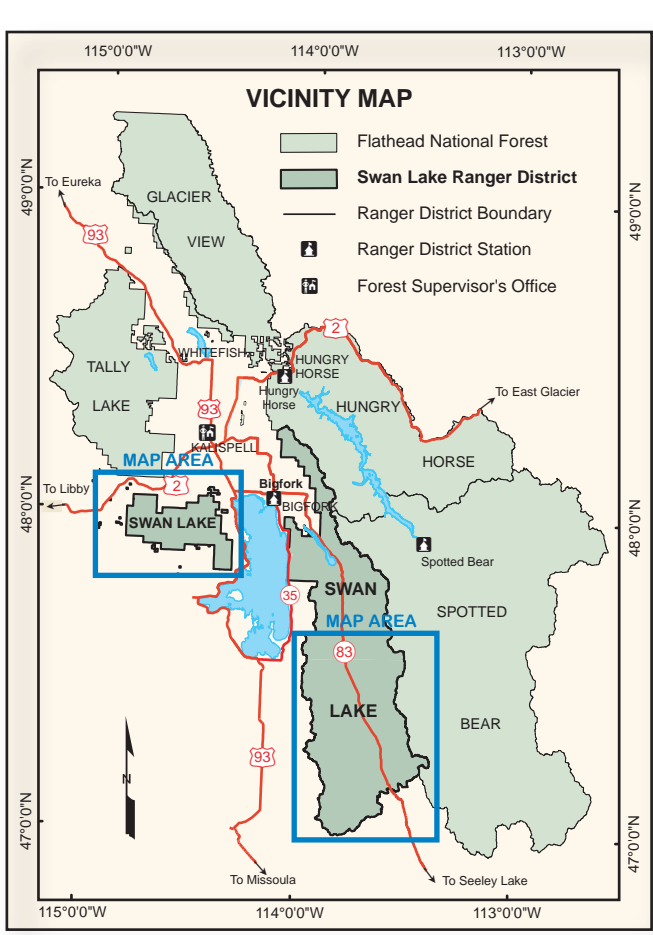
OVER SNOW VEHICLE LEGEND

- FOREST SERVICE - OPEN DEC. 1 - MARCH 31 TO OVER SNOW VEHICLE ACCESS, CONDITIONS PERMITTING
- FOREST SERVICE - OPEN YEARLONG TO OVER SNOW VEHICLE ACCESS, CONDITIONS PERMITTING
- FOREST SERVICE - NO OVER SNOW VEHICLE USE
- STATE LANDS - OPEN YEARLONG TO OVER SNOW VEHICLE ACCESS, CONDITIONS PERMITTING
- Road template has same open dates as area it resides in, Conditions Permitting
- Trail template has same open dates as area it resides in, Conditions Permitting
- Road **Open Yearlong** to Over Snow Vehicle Access, Conditions Permitting
- Road **Open Dec. 1 - Oct. 14** To Over Snow Vehicle Access, Conditions Permitting
- Groomed Route **Open Yearlong** To Over Snow Vehicle Access, Conditions Permitting
- Groomed Route **Open Dec. 1 - March 31** To Over Snow Vehicle Access, Conditions Permitting

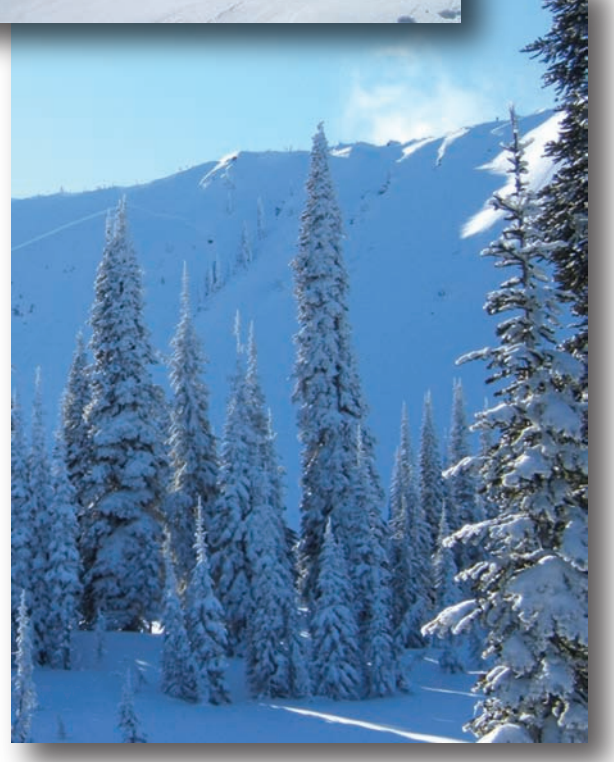
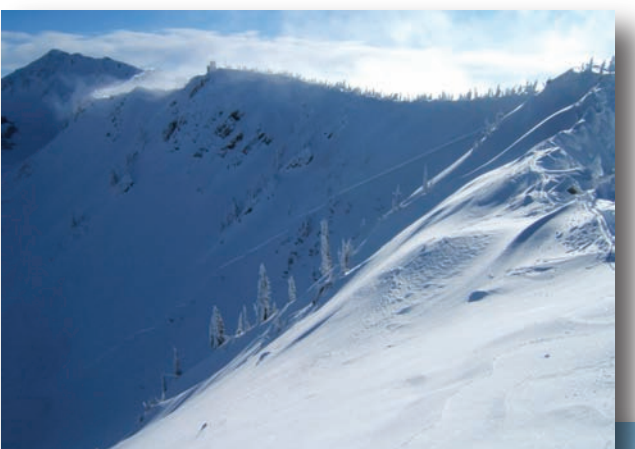
IT IS UNLAWFUL TO SNOWMOBILE ON PLOWED ROADS OR ANY ROAD DRIVEABLE BY CONVENTIONAL MOTORIZED VEHICLES, REGARDLESS OF THE TRAVEL DESIGNATION DISPLAYED ON THIS MAP.

DEFINITION
OVER SNOW VEHICLE - A motor vehicle that is designed for use over snow and that runs on a track or tracks and/or a ski or skis, while in use over snow.

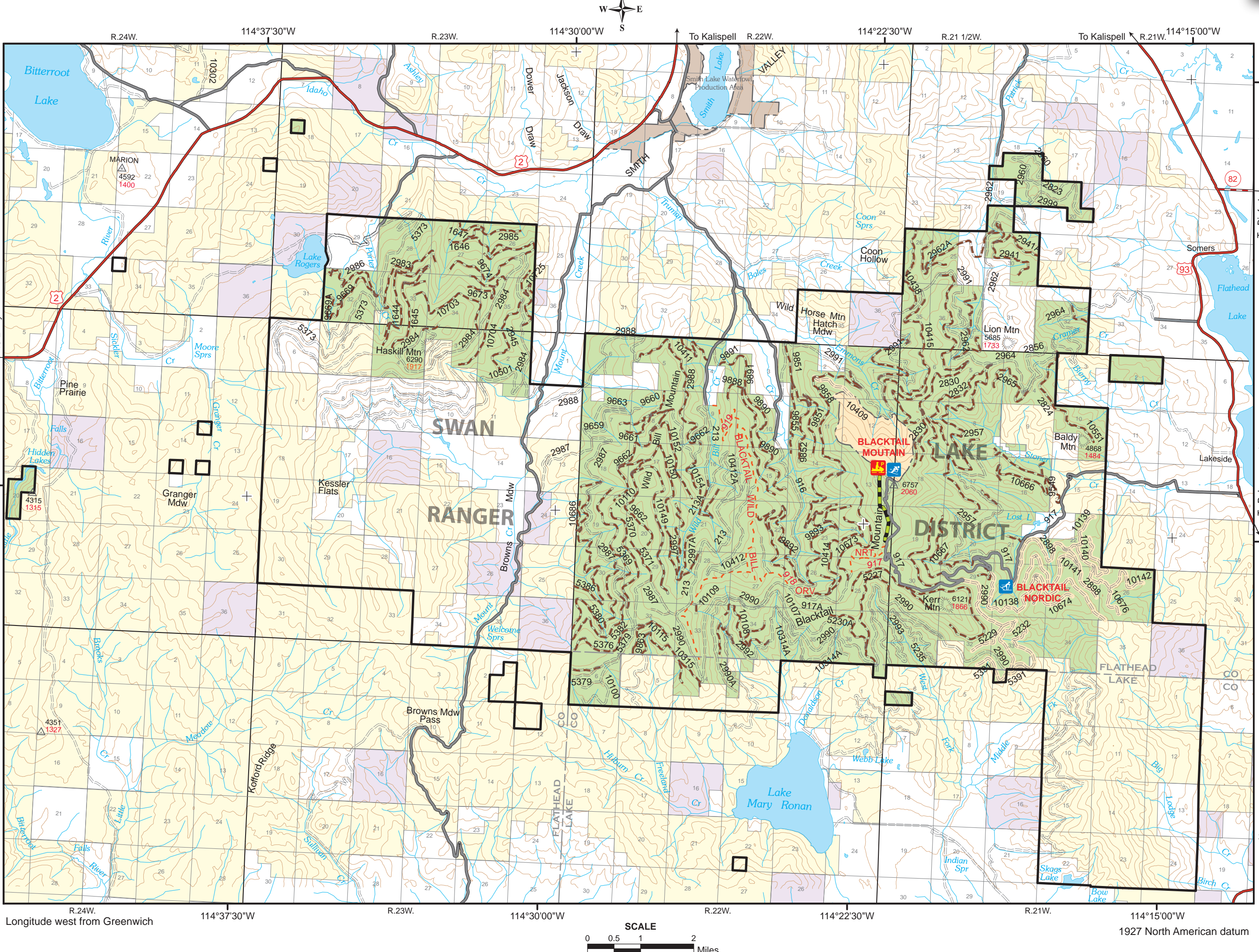
THIS MAP SHOWS FLATHEAD NATIONAL FOREST OVER SNOW TRAVEL MANAGEMENT DECISIONS AS OF DECEMBER 2010



For Lolo National Forest travel, ownership, and other information, please contact the Lolo National Forest Supervisor's Office or applicable Ranger Station.



**ISLAND UNIT
SWAN LAKE RANGER DISTRICT**



SCALE
0 0.5 1 2 Miles
1927 North American datum
Contour interval 200 feet