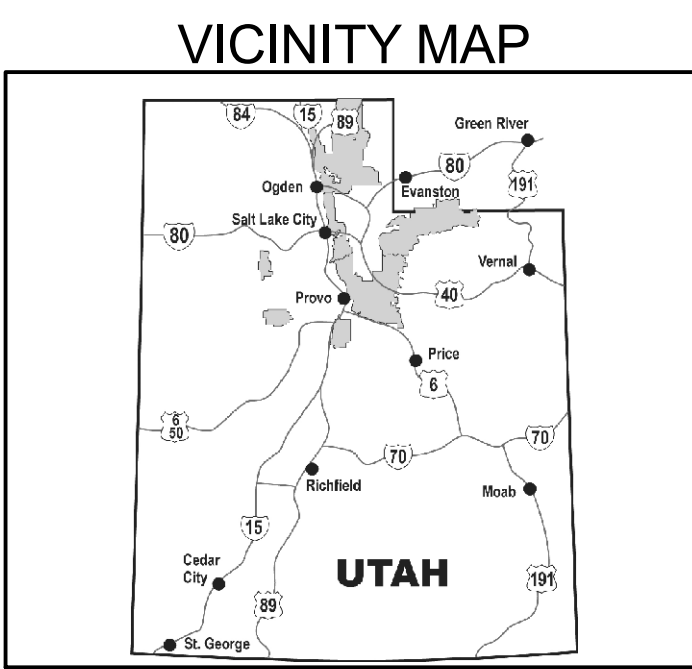




Motor Vehicle Use Map

Spanish Fork Ranger District, Uinta-Wasatch-Cache National Forest



INFORMATION SOURCES

Contact Information
<http://www.fs.fed.us/r4/uwc/>

Uinta-Wasatch-Cache National Forest
 Provo Supervisor's Office
 88 West 100 North
 Provo, UT 84601
 (801) 377-5780

Spanish Fork Ranger District
 44 West 400 North
 Spanish Fork, UT 84660
 (801) 798-3571

Public Lands Information Center
 (801) 466-6411

EMERGENCY.....911
 To Report Fires.....911
 Utah County Sheriff.....(801) 854-4000
 Wasatch County Sheriff.....(435) 654-1411
 Juab County Sheriff.....(435) 623-1349
 Tooele County Sheriff.....(435) 882-5600

Poaching Hotline... (800) 662-DEER (3337)



The U.S. Department of Agriculture (USDA) prohibits discrimination in all its programs and activities on the basis of race, color, national origin, age, disability, and where applicable, sex, marital status, familial status, parental status, religion, sexual orientation, genetic information, political beliefs, reprisal, or because all part of an individual's income is derived from any public assistance program. (Not all prohibited bases apply to all programs.) Persons with disabilities who require alternative means for communication of program information (Braille, large print, audiotape, etc.) should contact USDA's TARGET Center at (202) 720-2600 (voice and TDD). To file a complaint of discrimination, write to USDA, Director, Office of Civil Rights, 1400 Independence Avenue, S.W., Washington, D.C. 20250-9410, or call (800) 795-3272 (voice) or (202) 720-6382 (TDD). USDA is an equal opportunity provider and employer.

Legend

- Roads Open to Highway Legal Vehicles
- Roads Open to all Vehicles
- Trails Open to all Vehicles
- Trails Open to Vehicles 50" or Less in Width
- Trails Open to Wheeled Vehicles 50" or Less in Width
- Trails Open to Motorcycles Only
- Special Designation (See Table)
- Seasonal Designation (See Table)
- Dispersed Camping, Both Sides
- Dispersed Camping, Left Side
- Dispersed Camping, Right Side (See table for DC information)
- Interstate
- Highways, US, State, County
- Other Public Roads
- Other Public Trails
- Short Route Identifier
- Milepost Marker
- FS Campgrounds
- Picnic Area
- Motorized Trailhead
- Information Site
- Forest Boundary
- National Forest System Lands
- Non-National Forest System Lands within the National Forest
- Wilderness Areas
- Political Boundary
- Township and Range Lines
- Section Lines
- Large Lakes and Rivers

0 4 8 12 16 Miles

EXPLANATION OF LEGEND ITEMS

Roads Open to Highway Legal Vehicles Only:
 Roads open only to motor vehicles licensed under State law for general operation on all public roads.

Roads Open to All Vehicles:
 Roads open to all motor vehicles, including smaller off highway vehicles that may not be licensed for highway use (not to oversize or overweight vehicles under State traffic law).

Trails Open to All Vehicles:
 Trails open to all motor vehicles, including both highway legal and nonhighway legal vehicles.

Trails Open to Vehicles 50" or Less in Width:
 Trails open only to motor vehicles less than 50 inches in width at the widest point on the vehicle.

Trails Open to Wheeled Vehicles 50" or Less in Width:
 These trails are open to wheeled, motor vehicles less than 50" in width at the widest point on the vehicle.

Trails Open to Motorcycles Only:
 Trails open only to motorcycles. Sidecars are not permitted.

Special Vehicle Designation:
 Indicates the road or trail is open to classes of vehicles other than those listed above. Refer to the Seasonal and Special Designation Table for further instructions.

Seasonal Designation:
 This symbol, used in conjunction with one of the other road or trail symbols, indicates that the road or trail is open only during certain portions of the year. Refer to Seasonal and Special Designation Table for further instructions.

Dispersed Camping:
 Dispersed Camping, Both Sides
 Dispersed Camping, Left Side
 Dispersed Camping, Right Side

Used along with a designated road or trail to indicate limited cross-country motor vehicle use within a specific distance of that route, solely for the purpose of dispersed camping. Refer to the Dispersed Camping Table for specifics.

Other Public Roads and Trails:
 Interstate
 Highways, U.S., State, County
 Other Public Roads
 Other Public Trails

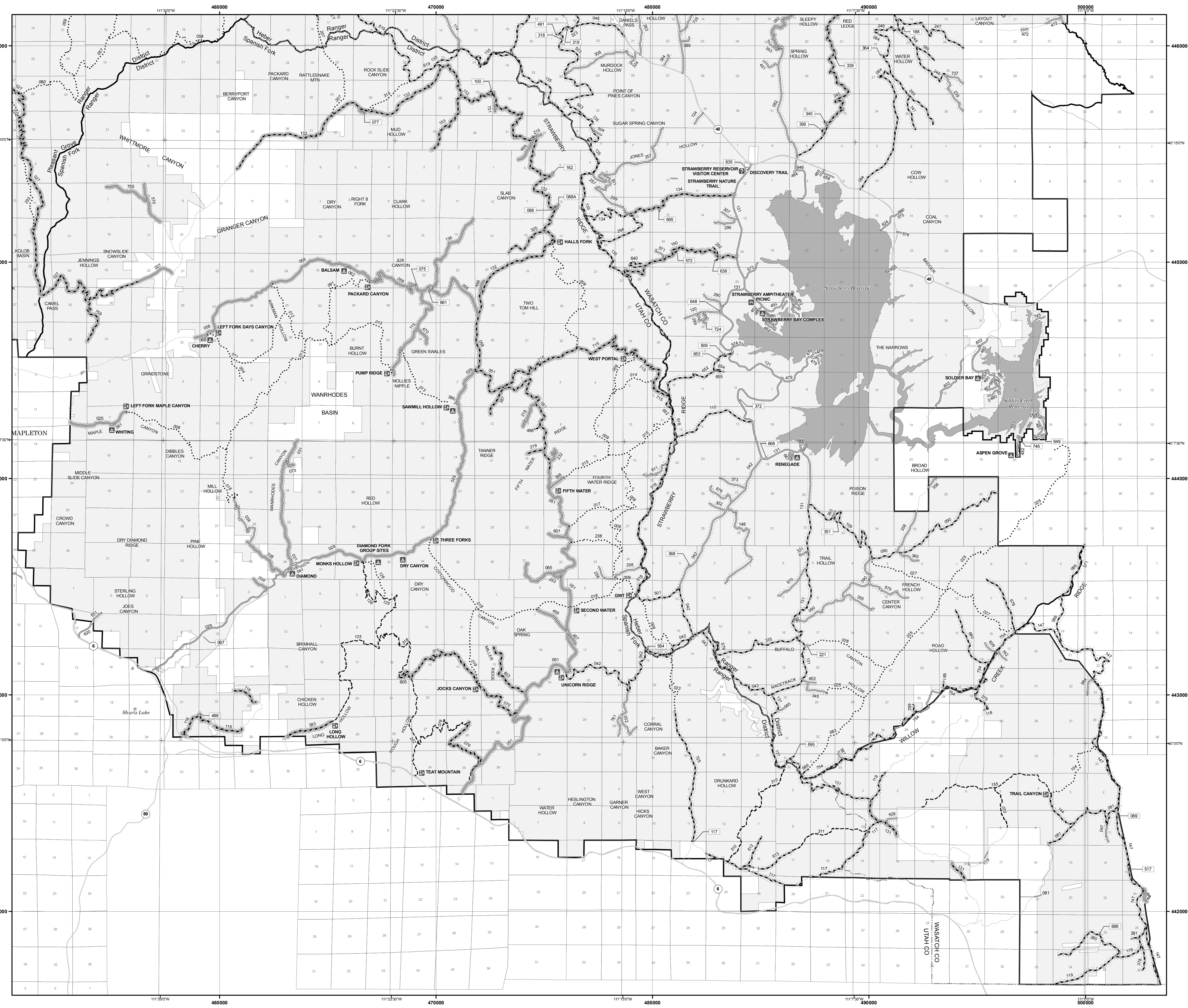
Used to show routes not designated for motorized use by the Forest Service. Part of the reference layers showing connections to towns and cities outside the forest boundary.

Short Route Identifier:
 70333

Used for roads that are too short to show an actual symbol type on the map. The symbol with the arrow pointing away from the road will direct the user to a table that contains a corresponding road number for more information.

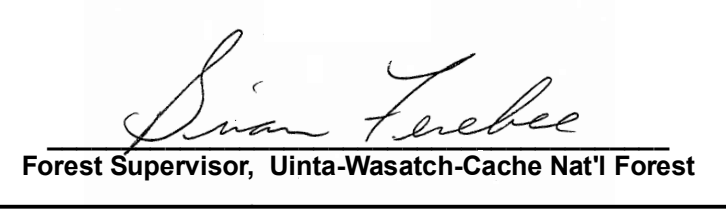
Milepost Marker:
 Used to display the beginning and ending mileposts of a road that has a change in the designation but not the symbology.

Motorized Trail Access:
 This symbol indicates a trail head for access to a motorized route. Not all motorized routes have trail heads and those that do may range from primitive to developed.



PURPOSE AND CONTENTS OF THIS MAP

The designations shown on this motor vehicle use map (MVUM) were made by the responsible official pursuant to 36 CFR 212.51; are effective as of the date of this MVUM; and will remain in effect until superceded by the next year's MVUM.



It is the responsibility of the user to acquire the current MVUM. This MVUM shows the National Forest System roads, National Forest System trails, and the areas on National Forest System lands in the Uinta-Wasatch-Cache National Forest, Spanish Fork Ranger District that are designated for motor vehicle use pursuant to 36 CFR 212.51. This MVUM also identifies the vehicles classes allowed on each route and in each area and any seasonal restrictions that apply on those routes and in those areas.

Designation of a road, trail, or area for motor vehicle use by a particular class of vehicle under 36 CFR 212.51 should not be interpreted as encouraging or inviting use, or to imply that the road, trail, or area is passable, actively maintained, or safe for travel. Motor vehicle designations include parking along designated routes and at facilities associated with designated routes when it is safe to do so and when not causing damage to National Forest System resources. Seasonal weather conditions and natural events may render designated roads and trails impassable for extended periods. Designated areas may contain dangerous or impassable terrain. Many designated roads and trails may be passable only by high-clearance vehicles or four-wheel drive vehicles. Maintenance of designated roads and trails will depend on available resources, and many may receive little maintenance.

This motor vehicle use map identifies those roads, trails, and areas designated for the motor vehicle use under 36 CFR 212.51 for the purpose of enforcing the prohibition at 36 CFR 261.13. This is a limited purpose. The other public roads are shown for information and navigation purposes only and are not subject to designation under the Forest Service travel management regulation.

These designations apply only to National Forest System roads, National Forest System trails, and areas on National Forest System lands.

PROHIBITIONS

It is prohibited to possess or operate a motor vehicle on National Forest System lands on the Uinta-Wasatch-Cache National Forest, Spanish Fork Ranger District other than in accordance with these designations (36 CFR 261.13).

Violations of 36 CFR 261.13 are subject to a fine of up to \$5,000 or imprisonment for up to 6 months or both (18 U.S.C. 3571(e)). This prohibition applies regardless of the presence or absence of signs.

This map does not display nonmotorized uses, over-snow uses, or other facilities and attractions on the Uinta-Wasatch-Cache National Forest, Spanish Fork Ranger District. Obtain a forest visitor map for more complete information.

Designated roads, trails, and areas may also be subject to temporary, emergency closures, and visitors must comply with signs notifying them of such restrictions. A national forest may issue an order to close a road, trail, or area on a temporary basis to protect the life, health or safety of forest visitors or the natural or cultural resources in these areas. Such a temporary and/or emergency closures are consistent with the Travel Management Rule (36 CFR 212.52 (b), 36 CFR 261 subpart B).

The designation "road or trail open to all motor vehicles" does not supersede vehicle size or weight limits imposed through State traffic law.

OPERATOR RESPONSIBILITIES

Operating a motor vehicle on National Forest System roads, National Forest System trails, and in areas on National Forest System lands carries a greater responsibility than operating that vehicle in a city or other developed setting. Not only must the motor vehicle operators know and follow all applicable traffic laws, but they need to show concern for the environment as well as other forest users. The misuse of motor vehicles can lead to the temporary or permanent closure of any designated road, trail, or area. Operators of motor vehicles are subject to State traffic law, including State requirements for licensing, registration, and operation of the vehicle in question.

Motor vehicle use, especially off-highway vehicle use, involves inherent risks that may cause property damage, serious injury, and possibly death to participants. Riders should drive cautiously and anticipate rough surfaces and features, such as snow, mud, vegetation, and water crossings common to remote driving conditions. Participants voluntarily assume full responsibility for these damages, risks, and dangers. Motor vehicle operators should take care at all times to protect themselves and those under their responsibility.

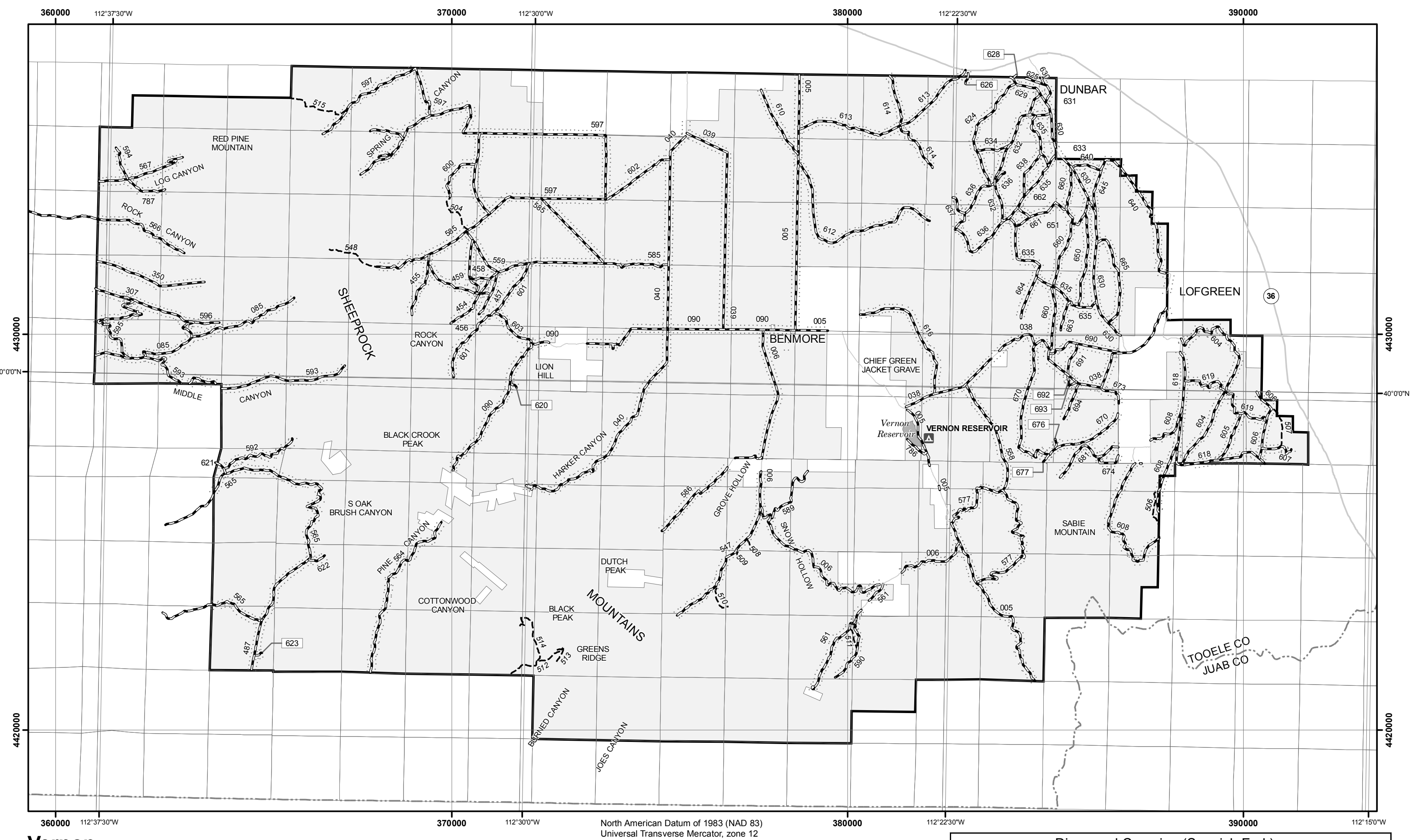
Much of the Uinta-Wasatch-Cache National Forest, Spanish Fork Ranger District is remote, and medical assistance may not be readily available. Cellular telephones do not work in many areas of the Uinta-Wasatch-Cache National Forest, Spanish Fork Ranger District. Operators should take adequate food, water, first aid supplies, and other equipment appropriate for the conditions and expected.

ALWAYS REMEMBER TO RESPECT PRIVATE LAND! PROTECT YOUR PRIVILEGE. STAY ON DESIGNATED ROADS AND TRAILS AND IN DESIGNATED AREAS.

Read and understand this map in its entirety. If you have questions please contact the Uinta-Wasatch-Cache National Forest, Spanish Fork Ranger District for clarification.

Road, trail, and area users must comply with this map, as well as all Federal, State, and local laws and regulations. Compliance with these rules is the responsibility of the user.

The U.S. Department of Agriculture (USDA) prohibits discrimination in all its programs and activities on the basis of race, color, national origin, age, disability, and where applicable, sex, marital status, familial status, parental status, religion, sexual orientation, genetic information, political beliefs, reprisal, or because all or part of an individual's income is derived from any public assistance program. (Not all prohibited bases apply to all programs.) Persons with disabilities who require alternative means for communication of program information (Braille, large print, audiotape, etc.) should contact USDA's TARGET Center at (202) 720-2600 (voice and TDD). To file a complaint of discrimination, write to USDA, Director, Office of Civil Rights, 1400 Independence Avenue, S.W., Washington, D.C. 20250-9410, or call (800) 795-3272 (voice) or (202) 720-6382 (TDD). USDA is an equal opportunity provider and employer.



Vernon

*Motor vehicle use off of designated ROADS for the purpose of dispersed camping is permitted for up to 150 feet from the centerline of the ROADS listed in the tables

Road Number	Distance/Side of Road	Vehicle Type	Dates Allowed
005 498 590 607 630 664	150 feet off center line of the road	Same as permitted on the road	Same as permitted on the road
006 499 591 608 631 665			
038 518 592 610 632 670			
039 547 593 612 633 673			
040 558 594 613 634 674			
085 559 595 614 635 676			
090 560A 596 616 636 677			
307 561 597 618 637 681			
350 563 598 619 638 690			
454 564 599 620 640 691			
455 565 600 621 645 692			
456 566 601 622 650 693			
457 567 603 623 660 694			
458 577 604 624 661 695			
459 585 605 626 662 787			
487 596 606 629 663			

Seasonal and Special Vehicle Designations (Vernon)

Route Number	Legend	Special Vehicle Designation	Dates Allowed	Beginning Mile Post	Ending Mile Post
025, 029, 031, 061, 065, 073, 136, 218, 232, 293, 338, 456, 487, 488, 601, 661	[Symbol]	Roads open to highway legal vehicles only, with Seasonal Designation	Seasonal Designation	06/01-11/30	
027	[Symbol]	Roads open to all Vehicles, with Seasonal Designation	Seasonal Designation	05/11-11/14	9.570 23.550
027	[Symbol]	Roads open to highway legal vehicles only, with Seasonal Designation	Seasonal Designation	05/11-11/14	23.550 24.680
051	[Symbol]	Roads open to highway legal vehicles only, with Seasonal Designation	Seasonal Designation	06/01-11/30	0.380 14.540
051	[Symbol]	Roads open to all Vehicles, with Seasonal Designation	Seasonal Designation	06/01-11/30	14.540 20.300
058	[Symbol]	Roads open to highway legal vehicles only, with Seasonal Designation	Seasonal Designation	06/01-11/30	3.360 15.605
058	[Symbol]	Roads open to all Vehicles, with Seasonal Designation	Seasonal Designation	06/01-11/30	15.605 17.310
076, 219, 387, 603	[Symbol]	Roads open to all Vehicles, with Seasonal Designation	Seasonal Designation	06/01-11/30	
077, 088, 162, 215, 470, 496, 499, 731, 088A	[Symbol]	Roads open to highway legal vehicles only, with Seasonal Designation	Seasonal Designation	07/01-11/30	
082	[Symbol]	Roads open to highway legal vehicles only, with Seasonal Designation	Seasonal Designation	06/30-11/01	3.470 6.920
100, 132, 153, 325	[Symbol]	Roads open to all Vehicles, with Seasonal Designation	Seasonal Designation	07/01-11/30	

Roads Too Short to Be Seen Clearly on the Map

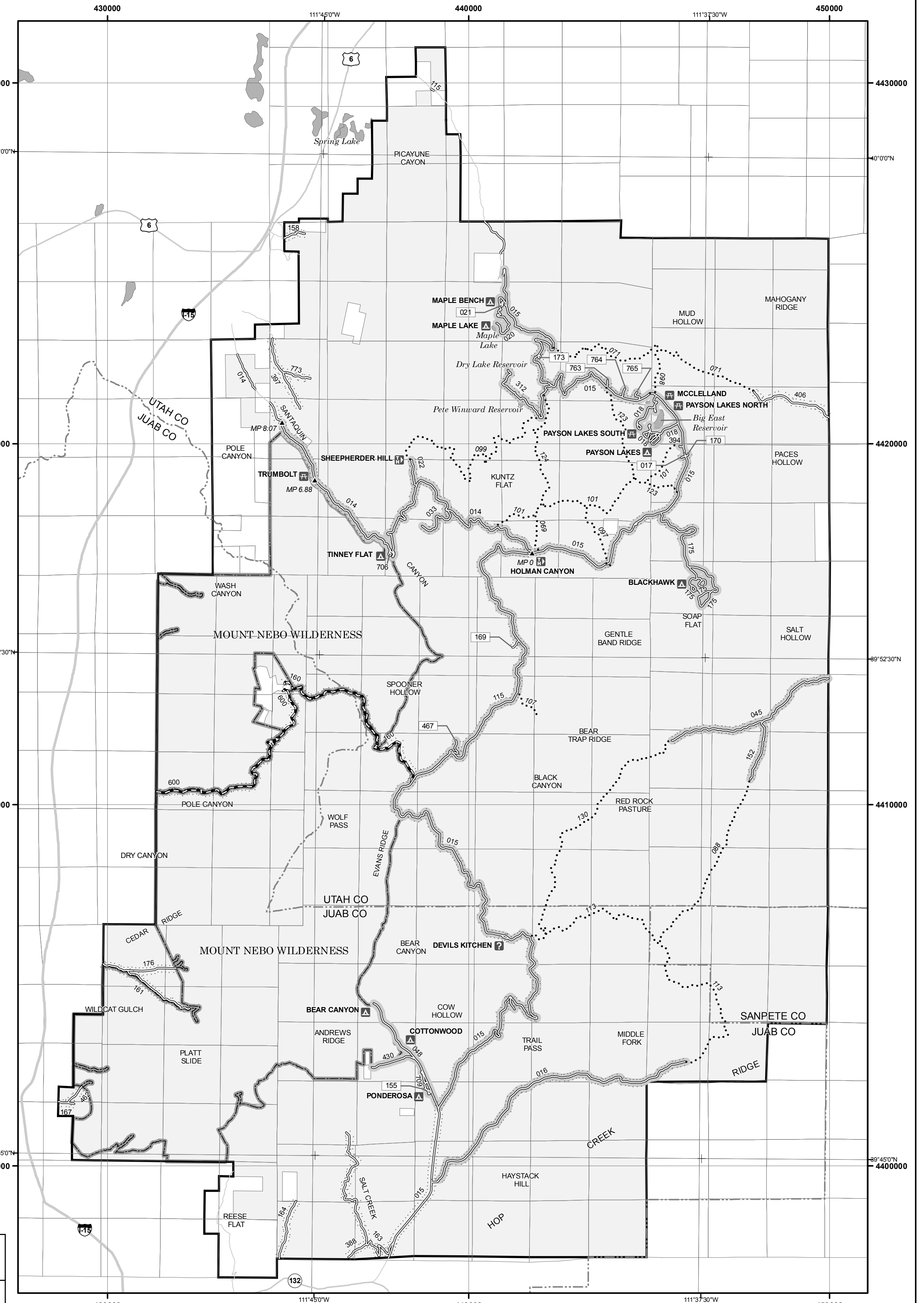
Road Number	Route Destination	Length in Feet	Length in Miles
017	Road Open to Highway Legal Vehicles	422	0.08
021	Road Open to Highway Legal Vehicles	1,088	0.206
067	Road Open to Highway Legal Vehicles	528	0.1
069	Road Open to All Vehicles	898	0.17
075	Road Open to Highway Legal Vehicles	317	0.06
077	Road Open to Highway Legal Vehicles	581	0.11
088	Road Open to Highway Legal Vehicles	1,214	0.23
100	Road Open to All Vehicles	581	0.11
117	Road Open to All Vehicles	206	0.039
155	Road Open to Highway Legal Vehicles	475	0.09
159	Road Open to Highway Legal Vehicles	898	0.17
162	Road Open to Highway Legal Vehicles	686	0.13
169	Road Open to Highway Legal Vehicles	106	0.02
170	Road Open to Highway Legal Vehicles	422	0.08
173	Road Open to Highway Legal Vehicles	739	0.14
188	Road Open to Highway Legal Vehicles	898	0.17
221	Road Open to Highway Legal Vehicles	528	0.1
318	Road Open to Highway Legal Vehicles	407	0.077
319	Road Open to Highway Legal Vehicles	412	0.078
339	Road Open to Highway Legal Vehicles	845	0.16
340	Road Open to Highway Legal Vehicles	1,056	0.2
351	Road Open to Highway Legal Vehicles	739	0.14
364	Road Open to All Vehicles	475	0.09
372	Road Open to Highway Legal Vehicles	528	0.1
395	Road Open to Highway Legal Vehicles	739	0.14
467	Road Open to Highway Legal Vehicles	211	0.04
488	Road Open to Highway Legal Vehicles	686	0.13
491	Road Open to All Vehicles	528	0.1
509	Road Open to Highway Legal Vehicles	422	0.08
517	Road Open to All Vehicles	264	0.05
572	Road Open to Highway Legal Vehicles	739	0.14
584	Road Open to Highway Legal Vehicles	686	0.13
591	Road Open to All Vehicles	950	0.18
620	Road Open to All Vehicles	739	0.14
623	Road Open to All Vehicles	686	0.13
626	Road Open to All Vehicles	1,162	0.22
628	Road Open to All Vehicles	396	0.075
635	Road Open to Highway Legal Vehicles	1,478	0.28
638	Road Open to Highway Legal Vehicles	1,003	0.19
648	Road Open to Highway Legal Vehicles	581	0.11
648	Road Open to Highway Legal Vehicles	581	0.11
649	Road Open to Highway Legal Vehicles	581	0.11
653	Road Open to All Vehicles	264	0.05
661	Road Open to Highway Legal Vehicles	739	0.14
668	Road Open to Highway Legal Vehicles	232	0.044
676	Road Open to All Vehicles	898	0.17
677	Road Open to All Vehicles	792	0.15
686	Road Open to Highway Legal Vehicles	422	0.08
690	Road Open to Highway Legal Vehicles	528	0.1
692	Road Open to All Vehicles	950	0.18
693	Road Open to All Vehicles	792	0.15
695	Road Open to Highway Legal Vehicles	528	0.1
724	Road Open to Highway Legal Vehicles	950	0.18
746	Road Open to Highway Legal Vehicles	898	0.17
763	Road Open to Highway Legal Vehicles	634	0.12
764	Road Open to Highway Legal Vehicles	845	0.16
765	Road Open to Highway Legal Vehicles	1,003	0.19
088A	Road Open to Highway Legal Vehicles	264	0.05

Dispersed Camping (Spanish Fork)

Road Number	Distance/Side of Road	Vehicle Type	Dates Allowed
025 109 245 355 498 661			
027 110 246 358 499 664			
027A 115 247 360 501 668			
029 116 248 364 503 670			
031 117 249 368 504 676			
032 118 253 371 509 678			
038 119 257 373 517 679			
039 120 258 374 518 680			
042 121 263 375 570 681			
043 124 289 378 571 682			
046 131 290 380 572 684			
047 132 292 381 579 686			
049 134 296 383 584 688			
051 135 298 384 585 689			
053 136 299 386 587 690			
063 137 301 387 601 695			
065 144 302 389 602 715			
069 147 307 393 603 724			
070 148 308 395 605 725			
073 149 318 398 609 731			
074 150 319 428 611 735			
075 153 323 451 612 737			
076 159 324 453 613 741			
077 162 325 456 619 754			
081 188 331 457 631 755			
082 189 335 470 638 759			
084 215 338 471 640 761			
086 218 339 472 648 762			
088 219 340 476 652			
088A 221 345 488 653			
090 232 350 491 654			
100 239 351 496 655			

Seasonal and Special Vehicle Designations (Spanish Fork)

Route Number	Legend	Special Vehicle Designation	Dates Allowed	Beginning Mile Post	Ending Mile Post
115	[Symbol]	Roads open to highway legal vehicles only, with Seasonal Designation	Seasonal Designation	07/01-11/30	0.000 2.500
115	[Symbol]	Special Vehicle Designation, with Seasonal Designation	All Highway Legal Vehicles and Motorcycles	07/01-11/30	2.500 3.110
115	[Symbol]	Roads open to highway legal vehicles only, with Seasonal Designation	Seasonal Designation	07/01-11/30	3.110 3.270
131, 134, 150	[Symbol]	Roads open to all Vehicles, with Seasonal Designation	Seasonal Designation	04/01-11/30	
245	[Symbol]	Roads open to all Vehicles, with Seasonal Designation	Seasonal Designation	06/30-11/01	1.360 8.932
383, 715	[Symbol]	Roads open to all Vehicles, with Seasonal Designation	Seasonal Designation	11/30-05/01	
398	[Symbol]	Special Vehicle Designation, with Seasonal Designation	All Highway Legal Vehicles and Motorcycles	06/01-11/30	0.000 1.500
570, 755	[Symbol]	Roads open to highway legal vehicles only, with Seasonal Designation	Seasonal Designation	10/20-10/28	
605	[Symbol]	Roads open to all Vehicles, with Seasonal Designation	Seasonal Designation	05/01-11/30	0.000 0.350
719	[Symbol]	Special Vehicle Designation	All Highway Legal Vehicles, All Vehicles 50 Inches Wide or Less*	01/01-12/31	0.890 1.014
759	[Symbol]	Roads open to all Vehicles, with Seasonal Designation	Seasonal Designation	05/11-11/14	0.000 1.620



Mt. Nebo

Seasonal and Special Vehicle Designations (Mt. Nebo)

Route Number	Legend	Special Vehicle Designation	Dates Allowed	Beginning Mile Post	Ending Mile Post
014	[Symbol]	Roads open to highway legal vehicles only, with Seasonal Designation	Seasonal Designation	07/01-11/30	0.000 6.880
014	[Symbol]	Roads open to highway legal vehicles only, with Seasonal Designation	Seasonal Designation	06/01-11/30	6.880 8.076
015, 016, 017, 018, 020, 045, 048, 152, 170, 175, 312, 394, 430, 467, 469, 763, 764, 765, 018A, 018B, 018C, 018D, 018E, 018F, 175A, 175B, 175C, 709A, 709B	[Symbol]	Roads open to highway legal vehicles only, with Seasonal Designation	Seasonal Designation	06/01-11/30	
022, 033, 706	[Symbol]	Roads open to highway legal vehicles only, with Seasonal Designation	Seasonal Designation	07/01-11/30	

Dispersed Camping (Mt. Nebo)

Road Number	Distance/Side of Road	Vehicle Type	Dates Allowed
014 045 164 176 462 763	150 feet off center line of the road	Same as permitted on the road	Same as permitted on the road
015 152 167 312 467 764			
016 158 169 388 469 765			
017 160 170 390 600 773			
022 161 173 397 702			
033 163 175 406 708			

*Motor vehicle use off of designated ROADS for the purpose of dispersed camping is permitted for up to 150 feet from the centerline of the ROADS listed in the tables