

Summertime Tips

ANGELES National Forest



FIRE SEASON

Beginning in May of each year, the Angeles National Forest enters "Fire Season". The chaparral slows its growth and begins to dry out. The temperatures rise and humidity drops. Grasses turn from green to yellow to brown. Conditions grow worse through June, July and August. In the fall they are compounded by hot, dry Santa Ana winds which blow in from the desert and roar down the canyons toward the coast.

PLEASE HELP PREVENT FIRES!

In the Angeles National Forest alone, more than one hundred fires are started by people each year. Some are the result of carelessness, many are started by unsupervised children. Far too many fires are started by unattended or abandoned campfires, illegally discharged fireworks and improperly maintained motor vehicles. Please help by being careful and using fire in the forest wisely.



CAMPFIRE PERMITS

Campfire permits are not required at developed Forest Service campgrounds or picnic areas. Visitors may use Forest Service provided stoves, fire pits and campfire circles or their own barbecues, liquid or gas fuel portable stoves as long as proper clearance is maintained. **Visitor built "rock ring" campfires are not allowed.**

Open wood fires and barbecues are not permitted outside developed Forest Service campgrounds and picnic areas. Only portable stoves using gas, jellied petroleum or pressurized liquid fuel may be used outside developed sites, and a California Campfire Permit is required for their use. Campfire Permits are free, and may be obtained at any Forest Service office.

During high fire danger, additional fire restrictions may be imposed. Before your visit, check with a local Forest Service office for current fire restriction information.



SMOKING

During fire season smoking is permitted in enclosed vehicles (please use your ash tray), at places of habitation (ranger stations, campsites, etc.) or in any area that is clear of flammable vegetation for a minimum of five feet.

FIREWORKS, FIREARMS AND SPARK ARRESTERS



Fireworks are prohibited in the National Forest at all times of the year!



Target shooting is permitted in designated shooting areas only. The possession or discharge of tracer or incendiary ammunition is prohibited in the National Forest at all times.



All off-highway vehicles must use designated routes only, and must be equipped with Forest Service approved spark arresters.

LOOK BEFORE YOU STEP!

The Angeles is known for its extremely rugged terrain. Hiking trails are frequently steep and rocky. When you are hiking, please watch out for loose and slippery rocks and steep cliffs where a careless step can cause serious falls. NEVER HIKE ALONE!

POISON OAK

Learn to recognize this plant in all of its many disguises! The plant usually grows as a bush, but can occur as a tall vine growing up the trunks of trees. The leaves are bright green in the spring, but turn dark red in the fall and may fall off during the cold winter months. You may see small greenish flowers in the spring, or white berries in the summer.



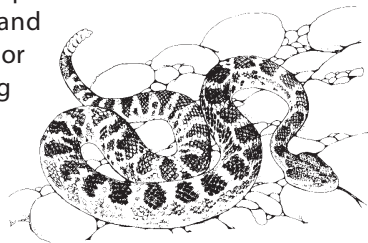
The lobed leaves of poison oak are always arranged in three leaflets - usually one to three inches long. Poison oak occurs throughout the forest below about 5,000 feet, so be on the look out. Remember -

"Leaves of three - leave it be!"

RATTLESNAKES

Pacific Rattlesnakes occur throughout the Angeles National Forest, and like other reptiles and amphibians, cannot control their body temperature. This means that they tend to seek cool, shady spots during the heat of the day (rocks, logs, etc.) and warmth during the cool nights. This is why snakes are often found on paved roads during the evening, seeking the heat remaining in the pavement.

Rattlesnakes are a natural part of the environment, and should not be bothered or destroyed when seen along the road away from inhabited areas. If you see a rattlesnake, move away slowly to avoid an encounter. Should you or



someone in your group be bitten by a rattlesnake, go immediately to a hospital for treatment. **BE CAREFUL AND WATCH WHERE YOU STEP! SNAKEBITES ARE REPORTED EACH YEAR ON THE ANGELES NATIONAL FOREST.**

WATER IS TO ENJOY!

One of the biggest attractions of the San Gabriel Mountains is water. During warm weather streamside areas attract many visitors wanting to play in the water or have a picnic by the stream. To keep you and your family safe, keep these rules in mind:

- Watch your step! Rocks can be slippery, and uneven streambeds can make walking difficult.
- Watch children carefully, and never leave them unattended.
- Never dive into pools! Although the water may look deep, rocks, shallow areas and other hazards may be hidden beneath the surface.

KEEP THE WATER CLEAN!

Clean water is not just important to humans, but is essential for fish, other wildlife and streamside plants. Keep soaps, detergents, garbage and other waste out of lakes and streams. Use toilets where provided, and place disposable diapers in trash cans.

When fishing, unused bait should be disposed of away from the water.

Only water from developed systems at recreation sites is safe to drink. Open water sources are easily contaminated by human or animal waste. Water from springs, lakes, ponds and streams should be properly treated before drinking. One recommended method of treatment is to bring clear water to a rolling boil for five minutes.

ALWAYS REMEMBER TO CAMP AT LEAST 100 FEET FROM RIVERS AND STREAMS!

The U. S. Department of Agriculture (USDA) prohibits discrimination in all its programs and activities on the basis of race, color, national origin, sex, religion, age, disability, political beliefs, sexual orientation, or marital or family status. (Not all prohibited bases apply to all programs.) Persons with disabilities who require alternative means for communication of program information (Braille, large print, audiotape, etc.) should contact USDA's TARGET Center at 202-720-2600 (voice and TDD).

To file a complaint of discrimination, write USDA, Director, Office of Civil Rights, Room 326-W, Whitten Building, 1400 Independence Ave., SW, Washington, DC 20250-9410, or call (202) 720-5964 (voice or TDD).

USDA is an equal employment opportunity provider and employer.

REPORTING FIRES

Please report all emergencies to the nearest Ranger Station or Sheriff's Deputy, or dial 911.

FOR MORE INFORMATION CONTACT ANY OF THE OFFICES LISTED BELOW:

ANGELES NATIONAL FOREST

701 N. Santa Anita Ave.
Arcadia, CA 91006
(626) 574-5200

CRS (800) 735-2929
FAX (626) 574-5233

<http://www.fs.fed.us/r5/angeles>

SAN GABRIEL RIVER RANGER DISTRICT District Office

110 N. Wabash Ave.
Glendora, CA 91741
(626) 335-1251

CRS (800) 735-2929
FAX (626) 914-3790

LOS ANGELES RIVER RANGER DISTRICT District Office

12371 N. Little Tujunga Canyon Rd.
San Fernando, CA 91342
(818) 899-1900

CRS (800) 735-2929
FAX (818) 896-6727

SANTA CLARA/MOJAVE RIVERS RANGER DISTRICT District Office

33708 Crown Valley Road
Acton, CA 93510
(661) 269-2808

CRS (800) 735-2929
FAX (661) 296-5847