

Monongahela National Forest

<p style="text-align: center;">Administrative Correction 13 June 27, 2011 Changes to Forest Communication Site Map, Appendix E</p>

Under the 2000 Planning Rule (36 CFR 219.31), the following administrative corrections and additions may be made at any time, are not plan amendments or revisions, and do not require public notice or the preparation of an environmental document under Forest Service NEPA procedures:

- (1) Corrections and updates of data and maps;
- (2) Updates to activity lists and schedules as required by § 219.30(d)(1)-(6);
- (3) Corrections of typographical errors or other non-substantive changes; and
- (4) Changes in monitoring methods other than those required in a monitoring strategy.

The following corrections are due to changes made to the Monongahela National Forest radio facility network in 2010.

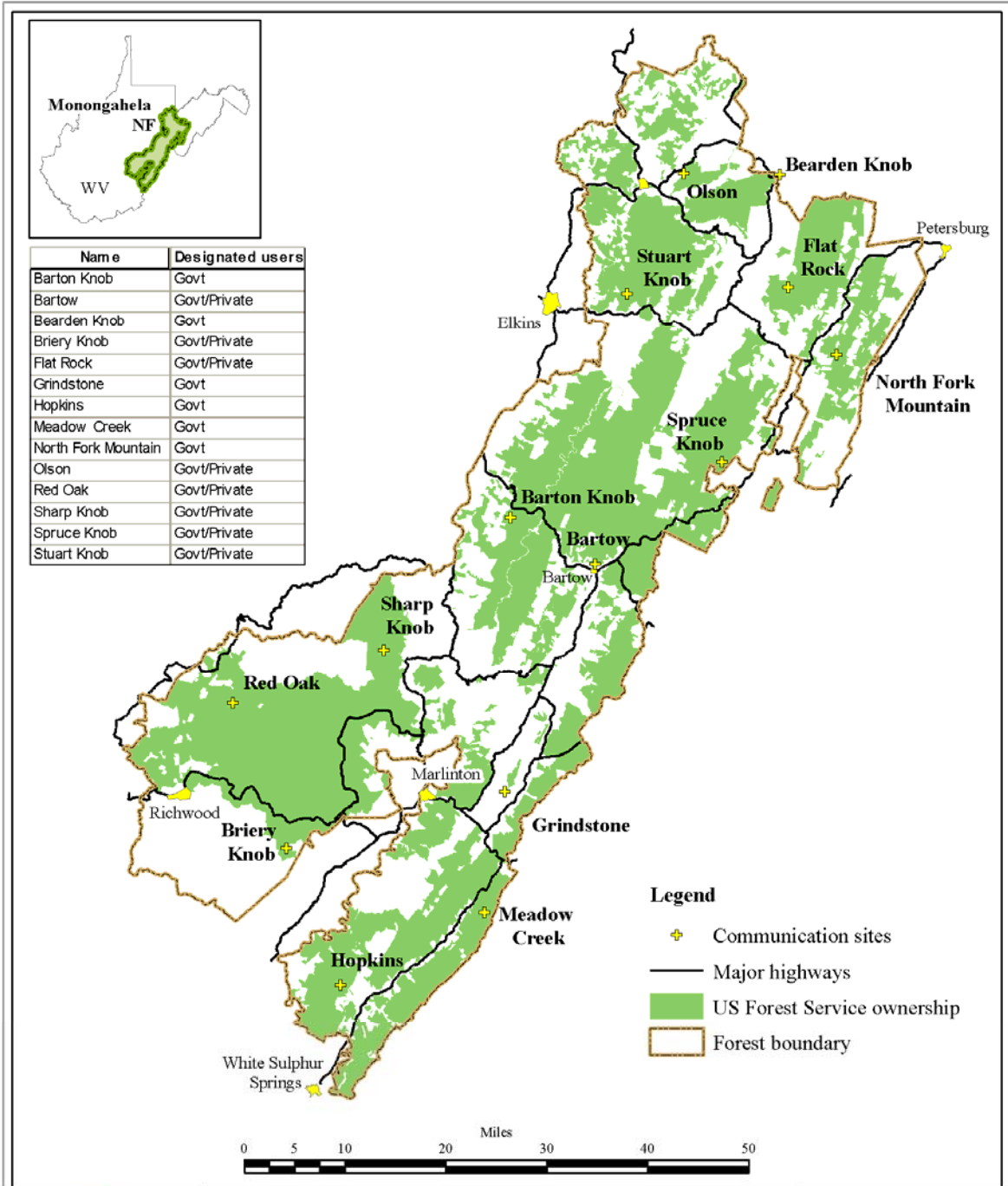
CORRECTION

Appendix E – Communication Sites, Forest Service Communication Sites (8.5 x 11 Map dated July 27, 2006): Replace map with updated version showing communication site changes that occurred as a result of Forest radio facility upgrades in 2010. The site changes are: 1) removal of the site at Richwood, and 2) addition of a new site at Barton Knob.

This administrative correction is a change in an associated Forest Plan document that is not a substantive change in the Plan components. The change is not considered substantive because:

- 1) This administrative change updates an existing Forest Plan map,
- 2) No substantive change in Forest Plan outputs, services, and expectations are anticipated from the changes in the radio facility network, and
- 3) Prior to their designation, the radio facility changes were analyzed and publicized through the NEPA process in 2010, specifically in a categorical exclusion and decision memo that indicated the changes would not result in any significant impacts.

The corrected map is attached below.



UTM, Zone 17
 NAD 83
 June 23, 2011
 GIS staff

Communication Sites

This product is for informational purposes and may not have been prepared for, or be suitable for legal, engineering, or surveying purposes. Users of this information should review or consult the primary data and information sources to ascertain the usability of the information.

