

Unit Highlights

Visitors to this district unit can enjoy the recreation serenity of a longleaf pine ecosystem and the historic pasts of Fullerton Lake Recreation Complex and Little Cypress Recreation Complex.

Surrounding Areas

Fullerton Lake Recreation Complex was once the site of the Fullerton Sawmill & community, which was placed on the National Register of Historic Places in 1986. Ruins and foundations of one of the largest sawmill operations in the South may be seen on the 1.6-mile Fullerton Mill Trail. Fullerton Lake offers a variety of recreation options including picnicking, camping, fishing, hiking, non-motorized boating, and a group picnic shelter. Little Cypress Recreation Complex features a 3-acre spring-fed pond surrounded by cypress & various hardwood forest and is encircled by the ½-mile Ol' Sarge Interpretive Trail. Little Cypress is a small day use recreation area that offers picnicking, fishing, fully accessible Ol' Sarge Interpretive Trail, volleyball court, and a group picnic shelter.

For More Information

Calcasieu Ranger District

9912 Highway 28 West
Boyce, Louisiana 71409
Phone: (318) 793-9427 or
1-(800)-225-9733
www.kisatchie.us
OHV Hotline (866) 830-6467

Vernon Unit

Calcasieu Ranger District Kisatchie National Forest

Fullerton Lake
Recreation Complex



Ol' Sarge Trail at
Little Cypress Pond



Recreation Opportunity Guide



Recreational Information

General

This unit encompasses 85,000 acres and is close to the Leesville / Ft. Polk area and surrounding Vernon parish.

Developed Recreation

The unit administers four developed recreation complexes; Little Cypress, Blue Hole, Government Pond and Fullerton Lake Recreation Complexes. Use of these facilities is free of charge, with exception of the group picnic shelters. User fees are as follows:

Day-Use Fees

\$ 35 – 75.00 for shelter
\$ 5.00 / per operator
(OHV, horse, mountain bike
on multi-use trails)

Camping Fees

Fullerton single-\$5.00/night
Enduro Camp-\$3.00/night

ATV and Horse Trails

The Vernon offers visitors over 52 miles of trails throughout pine and hardwood forests. The trails connect some of the recreation complexes.

Horseback riders from across the state enjoy the open longleaf forest carpeted by blue stem grass. A trail ride through the open longleaf country will work up a great appetite for the barbecue back in camp.

Whisky Chitto Trail – 10 miles

Big Branch Trail – 10 miles

Enduro Multiple-Use Trails – 30 miles

The United States Department of Agriculture (USDA) prohibits discrimination on the basis of race, national origin, sex, religion, age, disability, political beliefs and marital or family status. (Not all basis apply to all programs.) Persons with disabilities who require alternative means for communication of program information (Braille, large print, audio-tape, etc.) should contact the USDA Office of Communications at 202-720-5881 (voice) or 202-720-7808 (TDD).

To file a complaint, write the Secretary of Agriculture, Washington, DC 20250, or call 202-720-7327 (voice) or 202-720-1127 (TDD). USDA is an equal opportunity employer.

Other Essentials

The Vernon is a very popular area for various hunting and fishing opportunities. Contact the Calcasieu District office for dates and regulations. With numerous scenic areas, bogs and special interest areas, the Vernon Unit has a very unique selection of ecological interests for both nature studies and wildlife viewing. Changing plant life across the seasonal calendar gives the Vernon Unit a completely different look throughout the year.

There is a separate individual recreation guide for the following area on the Vernon Unit of the Calcasieu Ranger District:

- Enduro Camp and Trail

The above guide can be found at the Calcasieu Ranger District Office located on Highway 28 West, the Information Board at the corner of LA Hwy 10 and FS Road 400, or at the Kisatchie National Forest Supervisor's Office located at 2500 Shreveport Highway in Pineville, Louisiana.

Fort Polk and the Kisatchie

The portion of the Vernon used by Fort Polk is also a popular Wildlife Management Area. Hunters come from all over the region to hunt deer and turkey at the Fort Polk Wildlife Management Area.

For more information concerning the above pamphlets or any other questions you might have, please feel free to contact the Calcasieu Ranger District Office during normal business hours of 7:30 a.m.—4:00 p.m. Monday through Friday at (318) 793-9427.

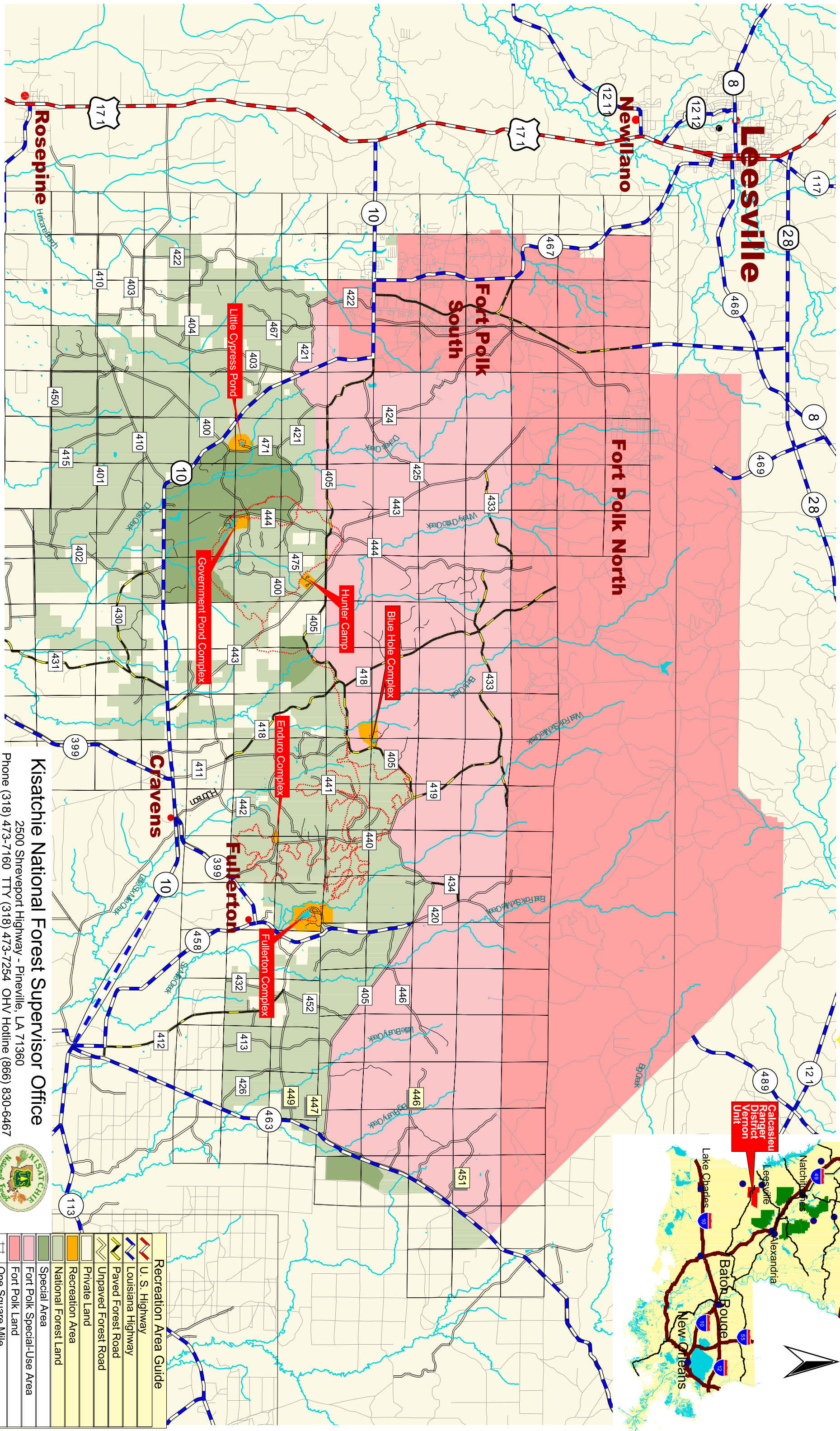
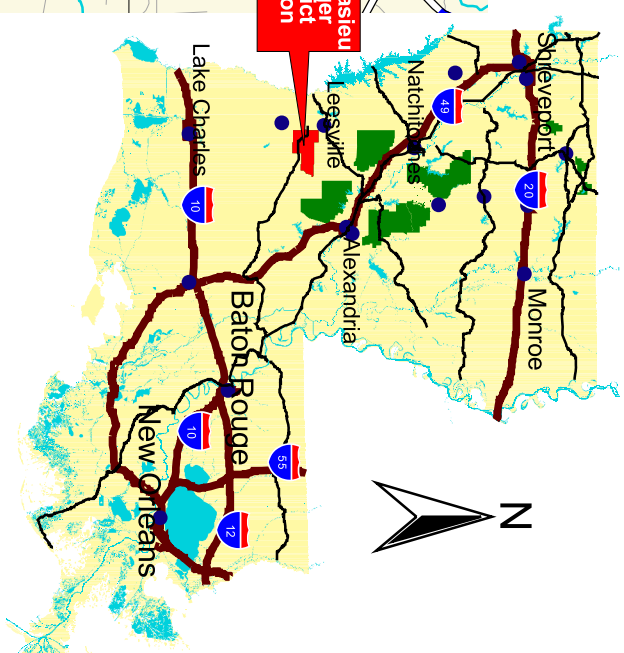
Recreational Opportunities and Facilities on the Calcasieu Ranger District's Vernon Unit																					
Fees	Picnic	Camping	Water Sports	Trails	Facilities																
\$	☀	🏕	🚣	🚲	🚶	🚰	🚰	🚰	🚰	🚰	🚰	🚰	🚰	🚰	🚰	🚰	🚰	🚰	🚰	🚰	
	☀	🏕	🚣	🚲	🚶	🚰	🚰	🚰	🚰	🚰	🚰	🚰	🚰	🚰	🚰	🚰	🚰	🚰	🚰	🚰	
	☀	🏕	🚣	🚲	🚶	🚰	🚰	🚰	🚰	🚰	🚰	🚰	🚰	🚰	🚰	🚰	🚰	🚰	🚰	🚰	
Fullerton Lake Recreation Complex																					
Fullerton Lake Day-Use Area	free	☑																			
Fullerton Lake Group-Use Area (1)	Call		☑																		
Fullerton Lake Campground	\$5			☑	☑																
Fullerton Mill Trail	free																				
Little Cypress Recreation Complex																					
Little Cypress Day-Use Area	free	☑																			
Little Cypress Group-Use Area (1)	Call		☑																		
Ol' Sarge Interpretive Trail	free																				
Blue Hole Recreation Complex																					
Blue Hole Day-Use Area	free	☑																			
Blue Hole Group-Use Area (1)	Call		☑																		
Blue Hole Wildlife Viewing Structure	free																				
Other Recreation Areas																					
Government Pond Recreation Area	free	☑	☑	☑	☑	☑															
Whisky Chitto Recreation Trail	free																				
Enduro Multiple-Use Trails (2)	\$5																				
Enduro Trailhead Camp	\$3	☑	☑	☑	☑	☑	☑														
Big Branch Trail and Longleaf Area	free																				
Turkey Pen Trail	free																				
Hunter Camp	free																				

(1) = \$35 - \$75 Daily Fee, reservations required.

(2) = No trail use fees for hikers

CALCASIEU RANGER DISTRICT'S VERNON UNIT

9912 LA Highway 28 West, Boyce, Louisiana 71409 (318) 793-9427 Office Hours: 7:30 a.m. - 4:00 p.m. M-F



Recreation Area Guide

	U. S. Highway
	Louisiana Highway
	Paved Forest Road
	Unpaved Forest Road
	Private Land
	Recreation Area
	National Forest Land
	Special Area
	Fort Polk Special-Use Area
	Fort Polk Land
	One Square Mile

Kisatchie National Forest Supervisor Office
 2500 Shreveport Highway - Pineville, LA 71360
 Phone (318) 473-7160 TTY (318) 473-7254 OHV Hotline (866) 830-6467

