

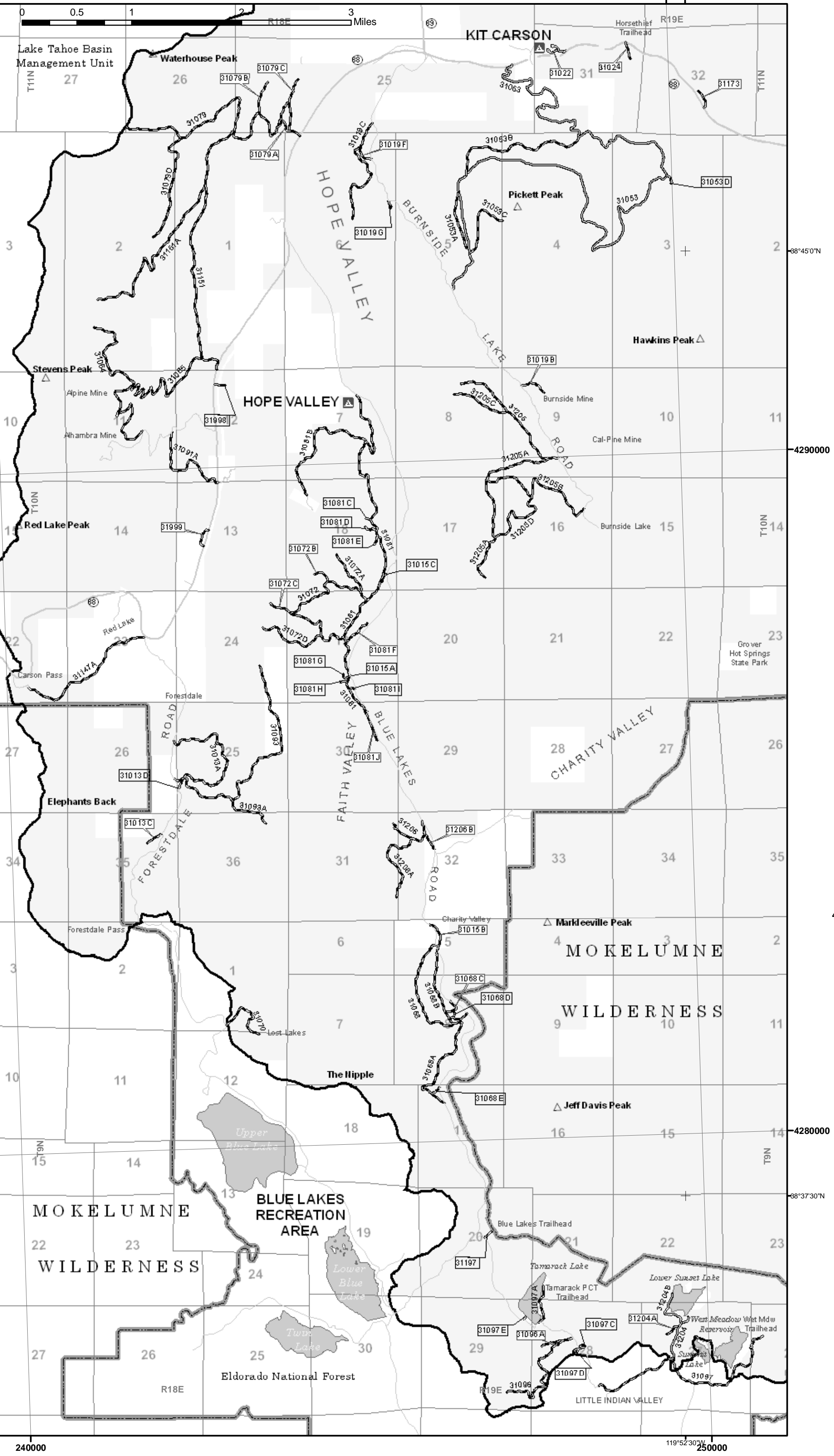
Carson & Bridgeport Districts

Upper Carson Watershed, Carson & Monitor Pass Areas

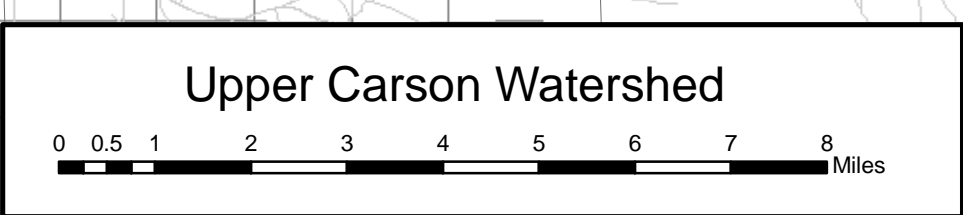
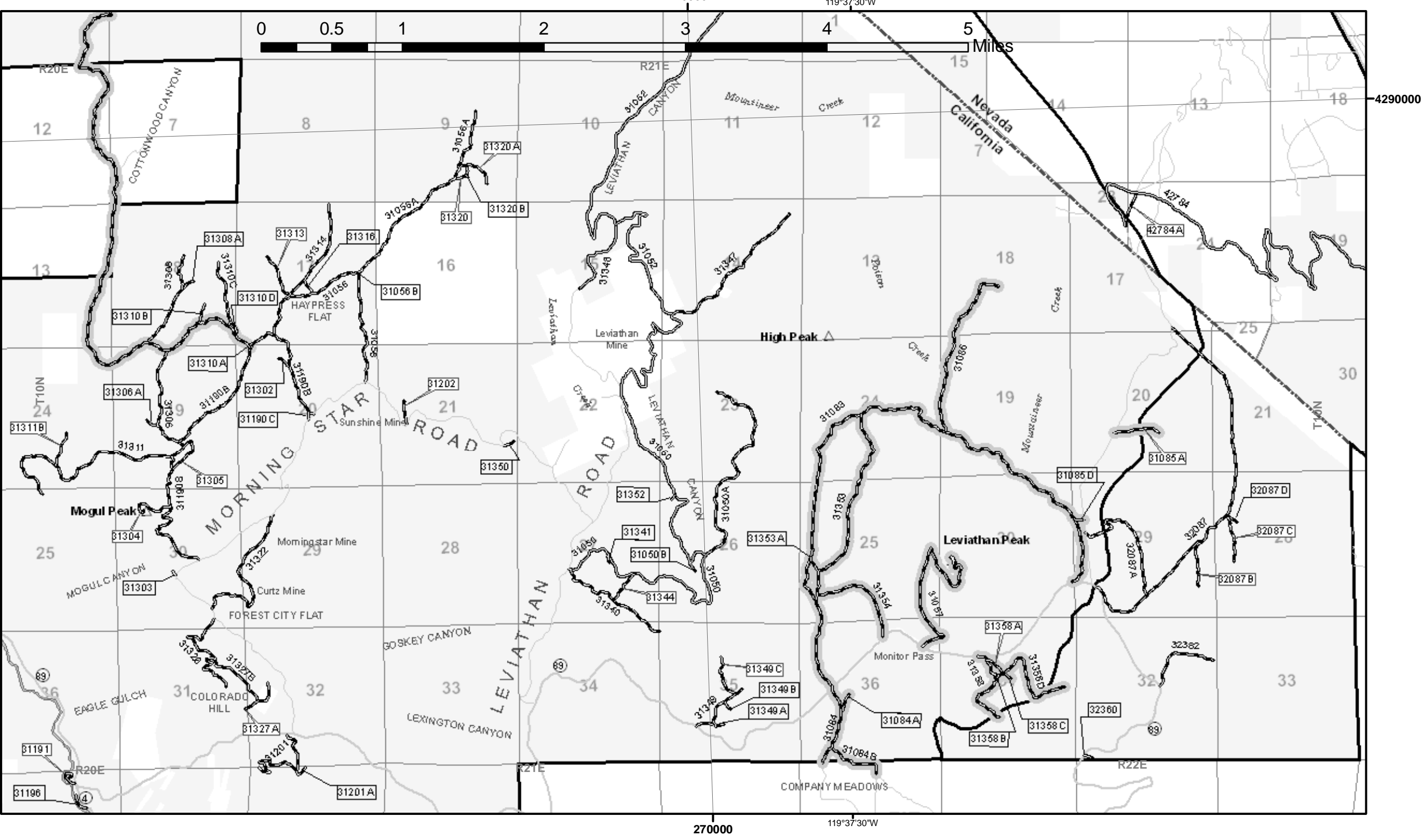
Bridgeport-Carson Sheet 4 of 10



Carson Pass Area



Monitor Pass Area



Designators for Short Routes on this Sheet?		
Route #	Route Designator?	Length (ft)
22201	Trails open to all vehicles, Yearlong	925
31001	Roads open to highway legal vehicles only, Yearlong	1261
31011	Roads open to highway legal vehicles only, Yearlong	168
31011	Roads open to highway legal vehicles only, Yearlong	281
31013D	Roads open to all Vehicles, Yearlong	507
31015A	Roads open to all Vehicles, Yearlong	75
31015C	Roads open to all Vehicles, Yearlong	588
31016A	Roads open to all Vehicles, Yearlong	838
31019G	Roads open to all Vehicles, Yearlong	370
31022A	Roads open to all Vehicles, Yearlong	650
31032B	Roads open to highway legal vehicles only, Yearlong	183
31032E	Roads open to highway legal vehicles only, Yearlong	282
31047	Roads open to all Vehicles, Yearlong	488
31047A	Roads open to all Vehicles, Yearlong	653
31047B	Roads open to all Vehicles, Yearlong	1165
31047C	Roads open to all Vehicles, Yearlong	641
31050B	Roads open to all Vehicles, Yearlong	374
31051	Roads open to all Vehicles, Seasonal	210
31053D	Roads open to all Vehicles, Yearlong	615
31056B	Roads open to all Vehicles, Yearlong	12
31060	Roads open to all Vehicles, Yearlong	1905
31060A	Roads open to all Vehicles, Yearlong	439
31068D	Roads open to all Vehicles, Yearlong	373
31068E	Roads open to all Vehicles, Yearlong	504
31069	Roads open to all Vehicles, Yearlong	1960
31081C	Roads open to all Vehicles, Yearlong	296
31081D	Roads open to all Vehicles, Yearlong	722
31081E	Roads open to all Vehicles, Yearlong	497
31081G	Roads open to all Vehicles, Yearlong	445
31081H	Roads open to all Vehicles, Yearlong	351
31081I	Roads open to all Vehicles, Yearlong	314
31084A	Roads open to all Vehicles, Seasonal	743
31085D	Roads open to all Vehicles, Seasonal	328
31090A	Roads open to all Vehicles, Yearlong	1117
31090B	Roads open to all Vehicles, Yearlong	1291
31097C	Roads open to all Vehicles, Yearlong	732
31097D	Roads open to all Vehicles, Yearlong	728
31097E	Roads open to all Vehicles, Yearlong	147
31111B	Roads open to all Vehicles, Yearlong	968
31111C	Roads open to all Vehicles, Yearlong	1109
31156A	Roads open to all Vehicles, Yearlong	1424
31190C	Roads open to all Vehicles, Yearlong	292
31196	Roads open to all Vehicles, Yearlong	716
31197	Roads open to highway legal vehicles only, Yearlong	447
31199	Roads open to all Vehicles, Yearlong	343
31201A	Roads open to all Vehicles, Yearlong	543
31210	Roads open to all Vehicles, Yearlong	1804
31210A	Roads open to all Vehicles, Yearlong	595
31211	Roads open to all Vehicles, Yearlong	940
31302	Roads open to all Vehicles, Yearlong	517
31303	Roads open to all Vehicles, Yearlong	224
31306A	Roads open to all Vehicles, Yearlong	464
31308A	Roads open to all Vehicles, Yearlong	553
31310A	Roads open to all Vehicles, Yearlong	172
31310B	Roads open to all Vehicles, Yearlong	739
31310D	Roads open to all Vehicles, Yearlong	578
31316	Roads open to all Vehicles, Yearlong	677
31320B	Roads open to all Vehicles, Yearlong	114
31341	Roads open to all Vehicles, Yearlong	374
31349A	Roads open to all Vehicles, Yearlong	554
31349B	Roads open to all Vehicles, Yearlong	348
31350	Roads open to all Vehicles, Yearlong	433
31352	Roads open to all Vehicles, Yearlong	202
31353A	Roads open to all Vehicles, Seasonal	598
31358B	Roads open to all Vehicles, Seasonal	198
31358C	Roads open to all Vehicles, Seasonal	309
31398	Roads open to all Vehicles, Yearlong	504
32087D	Roads open to all Vehicles, Yearlong	430
32360	Roads open to all Vehicles, Yearlong	367
41076	Roads open to all Vehicles, Yearlong	1170
41291	Roads open to all Vehicles, Yearlong	1552
41676A	Roads open to all Vehicles, Yearlong	951
41676B	Roads open to all Vehicles, Yearlong	1672
41677B	Roads open to all Vehicles, Yearlong	48
41690	Roads open to all Vehicles, Yearlong	53
41690	Roads open to all Vehicles, Yearlong	1477
41690A	Roads open to all Vehicles, Yearlong	1589

Seasonal Designators for Routes on this Sheet?					
Route Number	Legend	Special Vehicle Designator?	Dates Allowed	Beginning Milepost	Ending Milepost
31051				0.04	5.414
31057				0	1.623
31051B				0	1.05
31354				0	0.73
31358D				0	0.79
31051				0	0.04
31358				0	0.67
31051E				0	0.73
31358C				0	0.06
31051C				0	0.8
31084A				0	0.14
41189				0	3.73
31051D				0	0.85
31310				0	8.26
31084B				0	0.44
31083				0	4.69
31358A				0	0.16
31085A				0	0.33
31086				0	1.29
31085D				0	0.1
31358B				0	0.04
31353A				0	0.11
31363				0	1.55
31111A				0.15	0.8
31084				0	0.57
31051A				0	1.16