



United States Department of Agriculture  
Forest Service  
Pacific Northwest Region

# Native Plant Collection Program

Many people are discovering Central Oregon's native plants and bringing them home into their landscapes. With this increase in popularity, comes the risk of harming plant communities and the many wildlife species that depend on them. Please follow the permit conditions to protect plant populations and minimize negative impacts to the ecosystems in your National Forest.

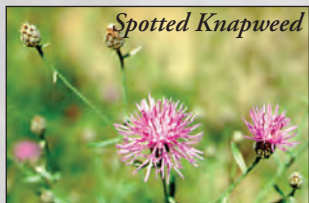
## Collecting Native Plants



### Permit Conditions

- ✦ Permits are required to collect native plants. There are three types of permits available: *free use*, *personal use*, and *commercial use*. For more information on permits see the *Types of Permits* section.
- ✦ Only the plants listed in this publication are allowed for collection. (Some species of plants not listed in this brochure may be available upon request).
- ✦ Follow the "1 in 20" rule. Collect only 1 plant for every 20 plants of that species in the area. If there aren't 20 plants present, find a new location.
- ✦ Tree seedlings need to be less than 4 feet in height and shrubs need to be less than 2 feet in height for transplanting.
- ✦ Keep your vehicle on established roads.
- ✦ Collect out of sight from trails. Fill in holes. Restore your collection area so that it appears undisturbed.
- ✦ Plants cannot be collected from the following areas: campgrounds, recreation areas, wilderness areas, research natural areas, the Newberry National Volcanic Monument, experimental forests, tree plantations, within 300 feet of lakes, streams springs or other wetlands, within 100 feet of graveled or paved roads, (for safety, scenic preservation and minimizing noxious weed invasion).
- ✦ Protected Species - All species of the following plants are protected under Oregon State Law and are prohibited from collection: lilies -including camas, mariposa lilies, fawn lilies, 3 and 6 petal lilies, orchids -including lady slippers, bitterroot, and primroses. All Threatened, Endangered, and Sensitive Species are prohibited from collection.

*Non-native invasive plants (noxious weeds) - If you identify any of the following weeds on National Forest land, please notify your local Ranger Station. They include St. Johnswort, spotted and diffuse knapweed, dalmatian toadflax, medusa head, and yellow starthistle. For more information on noxious weeds visit: [www.fs.fed.us/r6/centraloregon/weeds/](http://www.fs.fed.us/r6/centraloregon/weeds/).*



Spotted Knapweed

### Deschutes National Forest

1001 SW Emkay Drive  
Bend, OR 97702  
Phone: (541) 383-5300

### Bend-Fort Rock Ranger District

1230 NE 3rd St., Suite A-262  
Bend, OR 97701  
(541) 383-4000

### Crescent Ranger District

P.O. Box 208  
Crescent, OR 97733  
(541) 433-3200

### Sisters Ranger District

P.O. Box 249  
Sisters, OR 97759  
(541) 549-7700

### Redmond Air Center

1740 SE Ochoco Way  
Redmond, OR 97756  
(541) 504-7200

## Deschutes National Forest

### Permit Conditions and Transplanting Tips

The U.S. Department of Agriculture (USDA) prohibits discrimination in all its programs and activities on the basis of race, color, national origin, age, disability, and where applicable, sex, marital status, familial status, parental status, religion, sexual orientation, genetic information, political beliefs, reprisal, or because all or part of an individual's income is derived from any public assistance program. (Not all prohibited bases apply to all programs.) Persons with disabilities who require alternative means for communication of program information (Braille, large print, audiotape, etc.) should contact USDA's TARGET Center at (202) 720-2600 (voice and TDD).

To file a complaint of discrimination, write to USDA, Director, Office of Civil Rights, 1400 Independence Avenue, S.W., Washington, DC 20250-9410, or call (800) 795-3272 (voice) or (202) 720-6382 (TDD). USDA is an equal opportunity provider and employer.

Photo: Oregon Sunshine

# Collecting Native Plants

## Types of Permits

🌲 Free-use permits authorize collection of 16 plants, 4 of which can be trees...Free! Material collected using a free-use permit cannot be resold or bartered. The permits are valid for three months.

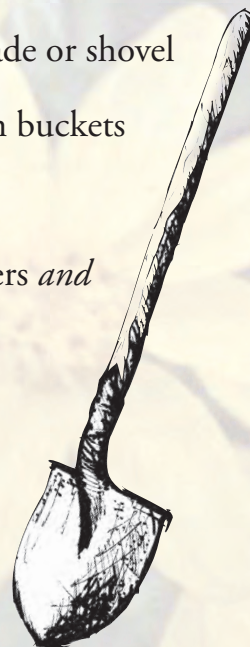
🌲 Personal-use permits authorize the collection of larger amounts of plants for a \$20.00 minimum charge. Quantities will be detailed on your Personal-use permit.

🌲 Commercial-use permits authorize business to collect plants for resale.

## Transplanting Tools

Things to bring with you:

- 🌲 Sharp long-handled spade or shovel
- 🌲 One or more five gallon buckets
- 🌲 Watering can
- 🌲 Burlap or old newspapers *and*
- 🌲 twine



## Transplanting Tips

🌲 Know where your transplants will be planted in your yard prior to collecting them. Select plants growing in conditions that match where they will be planted -moisture, sunlight, frost...

🌲 Reduce transplant shock by collecting plants between October and May, when soils are moist and plants are dormant.

🌲 Avoid collecting on steep slopes to help prevent soil erosion.

🌲 Dig plants carefully, retaining as much soil around the roots as possible. Keep roots moist at all times. Wrap wet newspapers or burlap around the outside of the root ball.

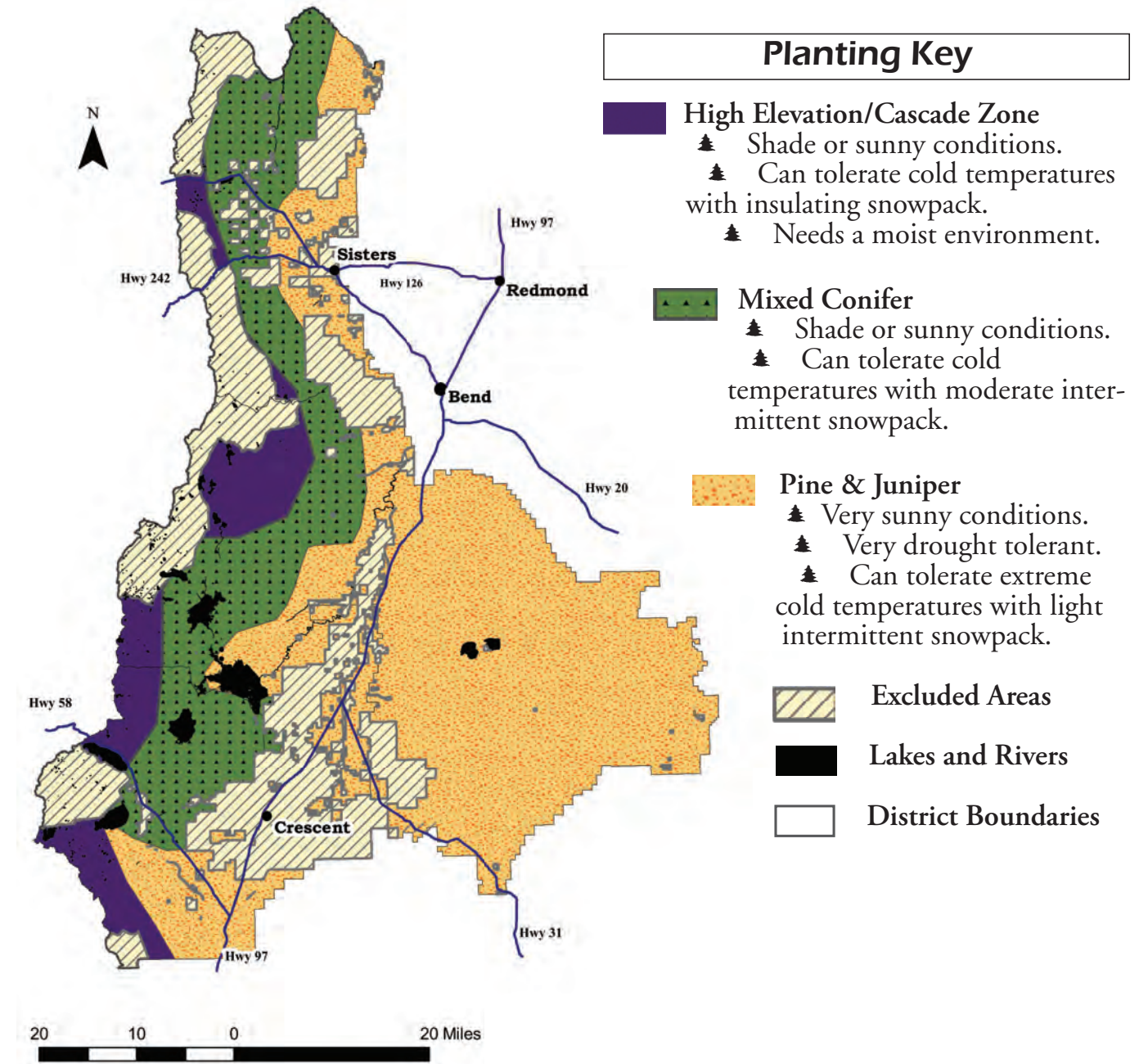
🌲 Completely cover your plants when carried in the back of an open truck. The intense wind will rapidly dry the foliage which severely stresses the plants, possibly causing them to die.

🌲 Don't delay! Re-plant your newly collected plants as quickly as possible.

🌲 Trees take 1-2 years to re-establish themselves in your landscape. Supplemental watering is advised during this period. Keep shrubs, grasses, and herbs watered until they are actively growing. During the dry summer months, water every 1-3 weeks (depending on species).

# Native Plant Community Zones

Locate native plants that would most likely survive in your yard by using this plant community zone map. Use this map only as a guide, since some plant species can be found in different zones than pictured.





Native plants are a great way to attract wildlife. Consider wildlife needs when choosing plants. White-crowned Sparrow. Photo courtesy of Dave Herr.

# Planting Native Plants

Native plants help provide a naturally appearing landscape-if they are planted in a way similar to the way they naturally grow. Here are some tips to make your native planting look “natural.”

- 🌲 Plant in groups of 1 to 5 plants
- 🌲 Space your plants unevenly, some close together, some plants further apart.
- 🌲 Plant a diversity of plants.
- 🌲 Scatter colors for a mosaic effect. Group colors to intensify the beauty.
- 🌲 Plant light colored plants, like Aspen, in front of dark colored trees for a nice effect.

## Looking For More Information? Here are some ideas...

These are only a few of many excellent references available. Explore your local library or bookstore for more.

### Plant Identification

- “Plants of the Pacific Northwest Coast” by J. Pojar and A A. MacKinnon. 1994. Lone Pine Publishing.
- “Sagebrush Country” by Ronald J. Taylor. 1992. Mountain Press Publishing Company.
- “Trees to Know In Oregon” 1991. Extension Bulletin 697, Oregon State University Extensions Service.
- “Plants of Southern Interior British Columbia and the Inland Northwest “ by R. Parish, R. Coupe, and D. Lloyd. 1996 . Lone Pine Publishing.
- Deschutes Co. Weeds website: [www.co.deschutes.or.us/go/living-here/public-works/special-programs/noxious-weed-control-program](http://www.co.deschutes.or.us/go/living-here/public-works/special-programs/noxious-weed-control-program)
- Deschutes and Ochoco National Forest website: [www.fs.fed.us/r6/centraloregon/plantlife/](http://www.fs.fed.us/r6/centraloregon/plantlife/)

### Attracting Wildlife

*Increasing the amount and diversity of vegetation in your landscape will attract more wildlife. Wildlife use native plants for food and shelter. Choose a variety of plants so that your landscape offers habitat and food year-round.*

- Oregon Department of Fish and Wildlife website: [www.dfw.state.or.us/](http://www.dfw.state.or.us/)
- Deschutes & Ochoco National Forests viewing wildlife website: [www.fs.fed.us/r6/centraloregon/wildlife/](http://www.fs.fed.us/r6/centraloregon/wildlife/)

### Noxious Weeds

- Brochures available at Deschutes National Forest Supervisor’s Office & Oregon State Univ. Ext. Service.
- “Weeds of the West” 2006. T. Whitson ct.al. The Western Society of Weed Science.
- Deschutes County weeds program: [www.co.deschutes.or.us/go/living-here/public-works/special-programs/noxious-weed-control-program](http://www.co.deschutes.or.us/go/living-here/public-works/special-programs/noxious-weed-control-program).
- Deschutes and Ochoco National Forest website: [www.fs.fed.us/r6/centraloregon/weeds/](http://www.fs.fed.us/r6/centraloregon/weeds/)

### Gardening/Landscaping

- Central Oregon Horticulture Extension Agent Oregon State University, Redmond, OR 97756.
- “Gardening with Native Plants of the Pacific Northwest: An Illustrated Guide” - Second edition by A.R. Kruckeberg. 1996. University of Washington Press.

## Planting for Fire Protection

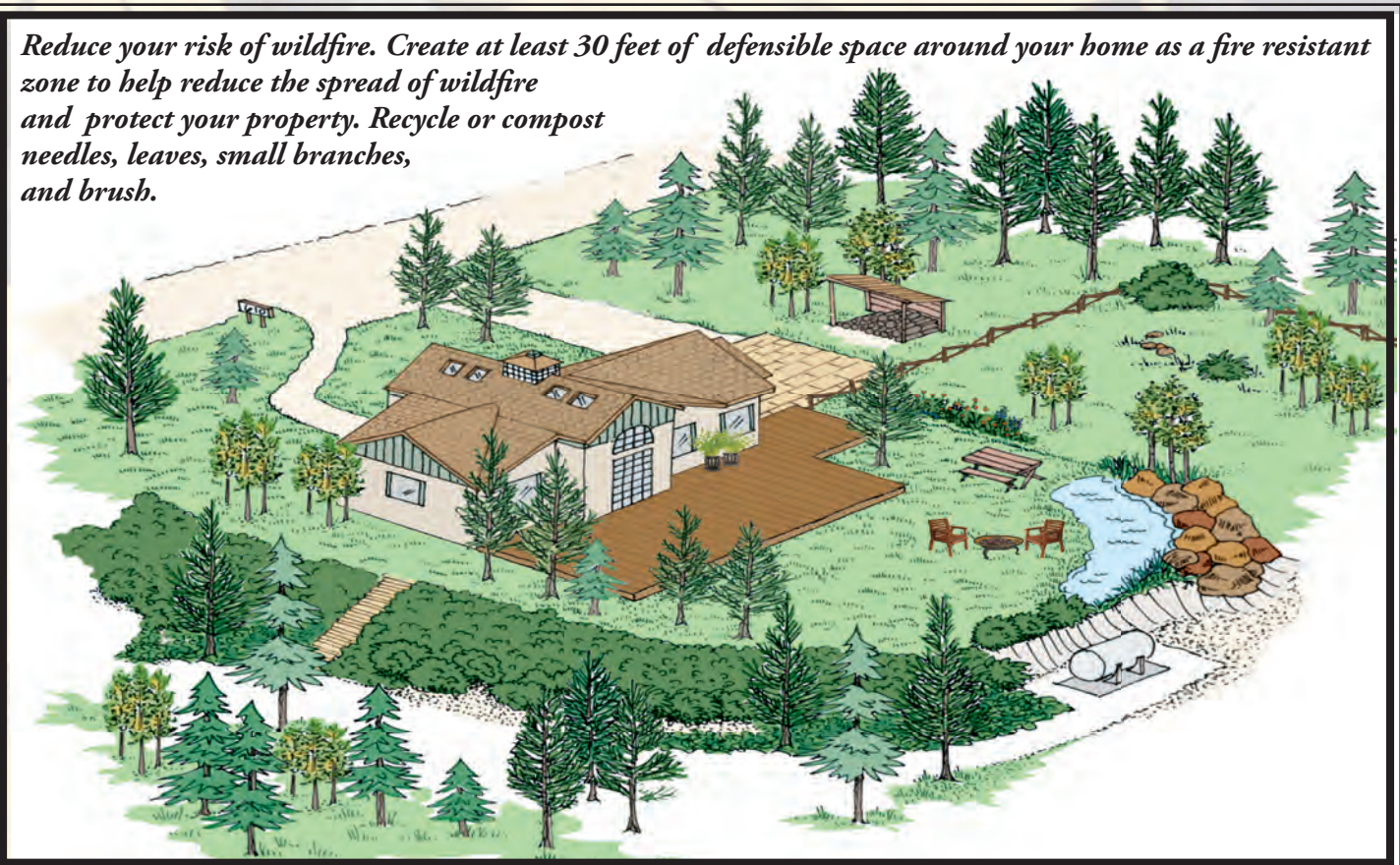
🌲 When planning your home landscape, keep in mind you can reduce the chances of wildfire through design and choice of plants. The Deschutes National Forest has a pamphlet called the Central Oregon Fire Revegetation Guide which offers design strategies, lists of fire resistant and water conservative plants, and other useful information.

🌲 Plant trees and shrubs away from house structures to provide a fire break AND create an outdoor room.

## Options to Explore

🌲 Propagation and seed collection are excellent methods for reproducing native plants already established in your landscape or from the National Forest. There are permits available for seed and cutting collection.

🌲 Many types of riparian plants are likely available at local nurseries. For information on native nursery stock or a list of local nurseries, call the Oregon Association of Nurseries at 1-800-342-6401.



For more information on defensible space visit [www.firefree.org](http://www.firefree.org)

# YOU CAN COLLECT...

## TREES

-   White Fir  
*Abies concolor*
-   Grand Fir  
*Abies grandis*
-   Incense Cedar  
*Calocedrus decurrens*
-   Western Larch\*  
*Larix occidentalis*
-   Western Juniper  
*Juniperus occidentalis*
-   Mountain Hemlock  
*Tsuga mertensiana*
-   Western White Pine  
*Pinus monticola*
-   Lodgepole Pine  
*Pinus contorta*
-   Ponderosa Pine  
*Pinus ponderosa*
-   Douglas-fir  
*Pseudotsuga menziesii*

\*Western Larch is deciduous, losing its needles in the fall.

Late fall and very early spring is the best time to transplant, before their buds open.

## SHRUBS

- |  |   |  |
|--|---|--|
|   Pinemat Manzanita<br><i>Arctostaphylos nevadensis</i> |   Big Sagebrush<br><i>Artemesia tridentata</i>            |   Gray Rabbitbrush<br><i>Chrysothamnus nauseosus</i> |
|   Greenleaf Manzanita<br><i>Arctostaphylos patula</i>   |   Snowbrush<br><i>Ceanothus velutinus</i>                 |   Bitterbrush<br><i>Purshia tridentata</i>           |
|   Kinnikinnick<br><i>Arctostaphylos uva-ursi</i>        |   Squaw Carpet<br><i>Ceanothus prostratus</i>             |   Wax Currant<br><i>Ribes cereum</i>                 |
|  |   Green Rabbitbrush<br><i>Chrysothamnus viscidiflorus</i> |   Sticky Currant<br><i>Ribes viscosissimum</i>       |

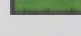
## GRASSES

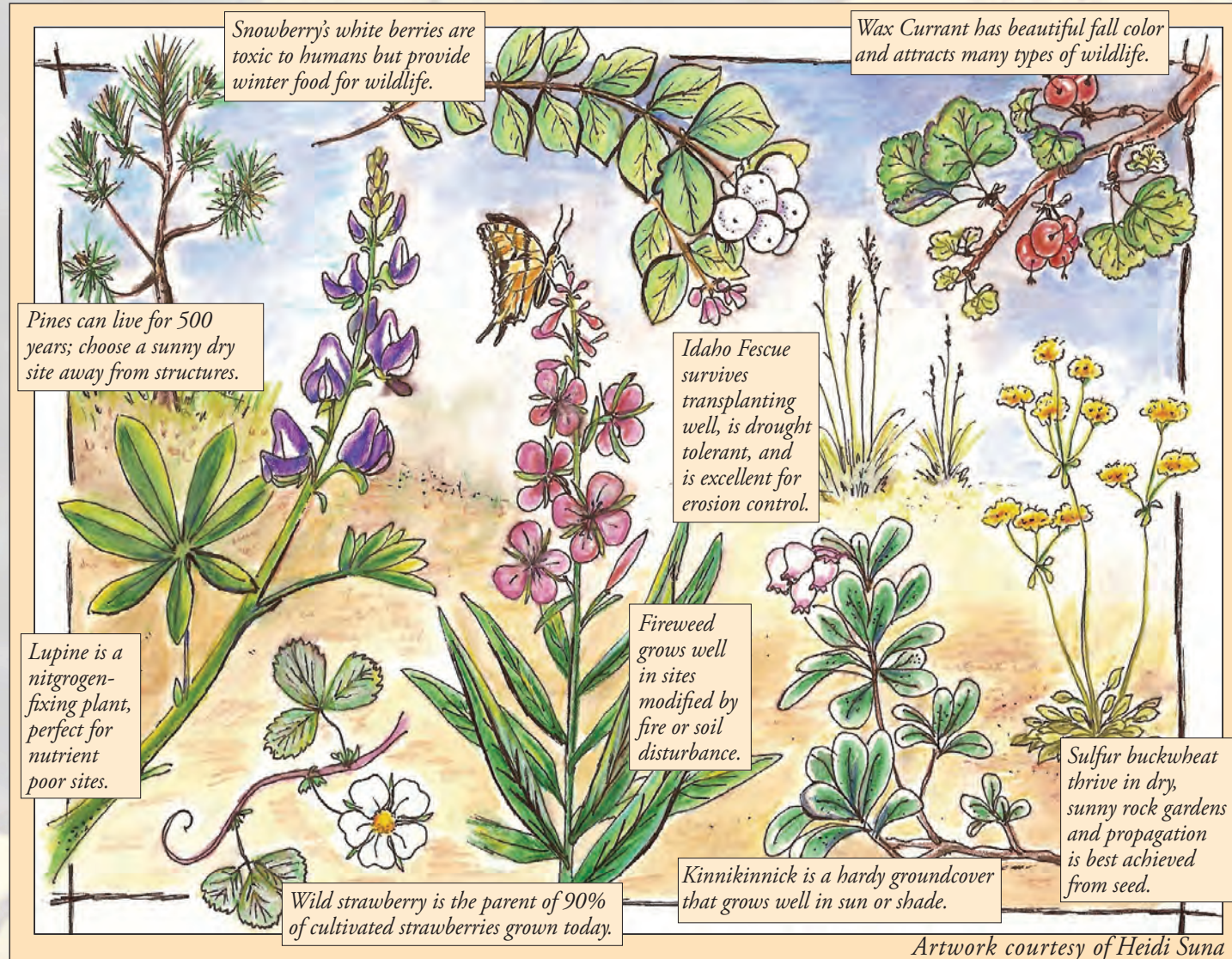
-   Bluebunch Wheatgrass  
*Agropyron spicatum*
-   Idaho Fescue  
*Festuca idahoensis*
-   Western Fescue  
*Festuca occidentalis*
-   Prairie Junegrass  
*Koeleria cristata*

## PLANTING KEY

-  Mixed Conifer
-  Pine & Juniper
-  Forestwide
-  High Elevation/Cascade
-  Sun
-  Shade
-  Sun or Shade

## HERBS

-   Yarrow  
*Achillea millefolium*
-   Fireweed  
*Epilobium angustifolium*
-   Sulfur Buckwheat  
*Eriogonum umbellatum*
-   Oregon Sunshine  
*Eriophyllum lanatum*
-   Western Wallflower  
*Erysimum asperum*
-   Broadpetal Strawberry  
*Fragaria virginiana*
-   Glaucous Penstemon  
*Penstemon euglaucus*
-   Lowly Penstemon  
*Penstemon humilus*
-   Scarlet Gilia  
*Gilia aggregata*
-   Horkel's Rose  
*Horkelia fusca*
-   Blue flax  
*Linum perenne*
-   Lupine(s)  
*Lupinus species*



Artwork courtesy of Heidi Suna