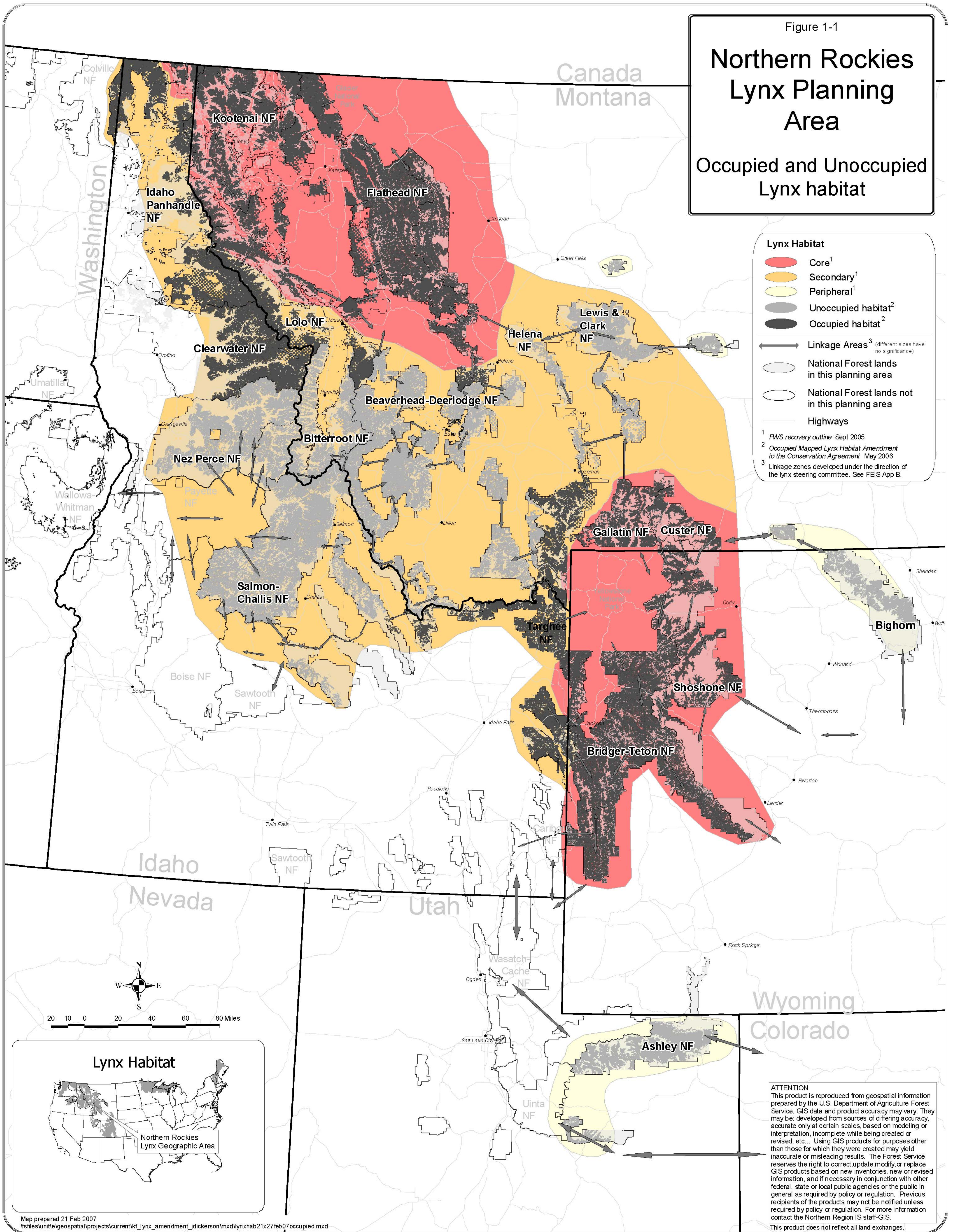


Figure 1-1

# Northern Rockies Lynx Planning Area

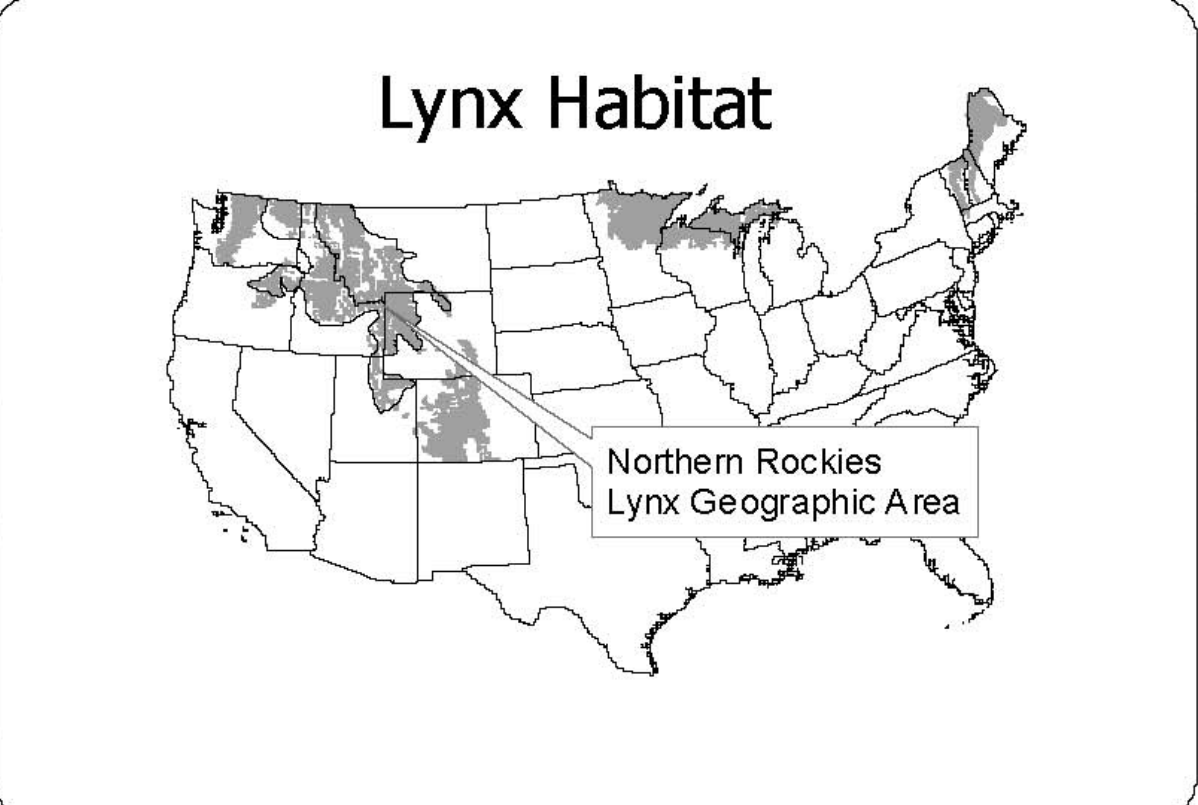
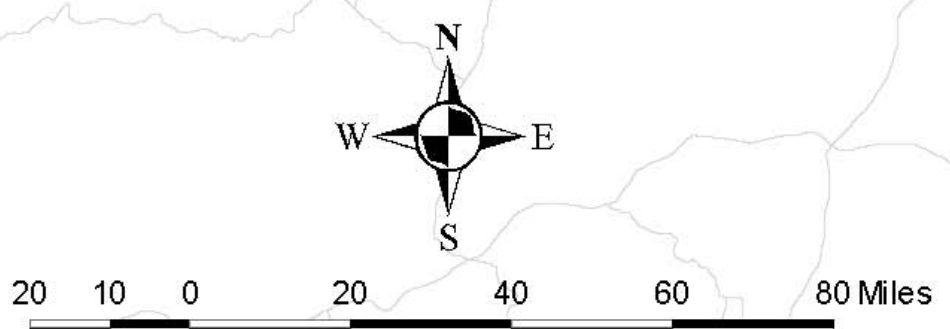
Occupied and Unoccupied  
Lynx habitat



**Lynx Habitat**

- Core<sup>1</sup>
- Secondary<sup>1</sup>
- Peripheral<sup>1</sup>
- Unoccupied habitat<sup>2</sup>
- Occupied habitat<sup>2</sup>
- Linkage Areas<sup>3</sup> (different sizes have no significance)
- National Forest lands in this planning area
- National Forest lands not in this planning area
- Highways

<sup>1</sup> FWS recovery outline Sept 2005  
<sup>2</sup> Occupied Mapped Lynx Habitat Amendment to the Conservation Agreement May 2006  
<sup>3</sup> Linkage zones developed under the direction of the lynx steering committee. See FEIS App B.



**ATTENTION**  
 This product is reproduced from geospatial information prepared by the U.S. Department of Agriculture Forest Service. GIS data and product accuracy may vary. They may be developed from sources of differing accuracy, accurate only at certain scales, based on modeling or interpretation, incomplete while being created or revised, etc... Using GIS products for purposes other than those for which they were created may yield inaccurate or misleading results. The Forest Service reserves the right to correct, update, modify or replace GIS products based on new inventories, new or revised information, and if necessary in conjunction with other federal, state or local public agencies or the public in general as required by policy or regulation. Previous recipients of the products may not be notified unless required by policy or regulation. For more information contact the Northern Region IS staff-GIS.  
 This product does not reflect all land exchanges.