

ROOSEVELT RANGER DISTRICT
3

3. Roosevelt Ranger District - Administrative Unit 3 - 336,680 acres

A. Unit Description:

This unit, the Roosevelt Ranger District, is centrally located in the Ashley National Forest. It is bordered by the Vernal Ranger District on the east, the Duchesne Ranger District on the west, the Wasatch National Forest on the north, and forms the south boundary of the Forest adjoining the Uintah and Ouray Indian Reservation.

This Unit lies mostly in Duchesne County, Utah, although the extreme southeast corner of the unit is in Uintah County, Utah.

B. Physical Characteristics:

Three major drainages dominate the unit. From east to west they are the Uinta, Yellowstone, and Lake Fork. All of these streams drain to the Duchesne River which is a tributary of the Green - Colorado River System. The dominant character of the unit was produced by glaciation which formed broad cirque basins with many lakes and narrow "U" shaped canyons.

The backbone of the Uinta Range, an east-west trending mountain system, is formed by a narrow, sinuous ridge that extends the entire east-west length of the unit. Subordinate ridges of similar shape but in places higher elevations, extend south from the main ridge to separate the drainage basins. Within the Uinta Mountains there are 26 summits and subordinate peaks above 13,000 feet (Hansen 1969, p. 14). Nine of these peaks are on the ridge dividing the Uinta and Yellowstone drainages. This ridge contains Kings Peak which at 13,528 feet is the highest point in Utah.

The dominant ridge between the Yellowstone and Uintah Rivers culminates in the high point of the main divide. From this ridge, the main ridge crest, the subsidiary ridges extending south, and the floors of the cirque basins are progressively lower to the east and west. A singularly impressive feature of the high country is the vast expanses of cirque floor above timberline that shoulder up to the steep ridges of the drainage divide. The largest expanse of this area above timberline is at the head of the Yellowstone drainage. The percentage of cirque floor area above timberline becomes progressively smaller in the drainages to the east and west. Similarly, the lower elevations of the cirque floors decrease to the east and west from Yellowstone.

The lowest point in the unit, 6,800 feet, is located near Elkhorn Guard Station in the southeast corner. Plant communities on the south slope of the Uinta Mountains vary from those species ecologically adapted to high elevations where cold alpine climatic conditions prevail to species that are adapted to semi-desert conditions at lower elevations.

In general, the flora of this unit can be categorized into several broad vegetative types. These are: (1) alpine-arctic sedge, grass

and forb communities usually occurring above an elevation of 11,000 feet; (2) alpine shrub communities found primarily in the higher cirque basins; (3) climax subalpine fir-Englemann spruce forest; (4) seral dominant lodgepole pine forest; (5) climax Douglas-fir stands usually occurring below the spruce-fir and lodgepole pine types; (6) ponderosa pine stands often occurring with Douglas-fir and aspen at intermediate elevations; (7) aspen clones which occur as relatively pure stands or intermingled with conifer trees; (8) wet sedge-grass meadows are found in cirque basins and on flood plains adjacent to streams; (9) dry sedge-grass-forb meadows or parklands of the upland plateaus; (10) mixed mountain shrubs on well drained slopes primarily below the lower conifer and aspen belt; (11) mixed conifer-broadleaf tree groves found on the flood plains of the larger streams; (12) sagebrush-grasslands which vegetate alluvial fans of the side canyons and lower foothills; (13) pinyon pine-juniper woodlands grow at lower elevations on harsh dry sites; (14) riparian shrub thickets, occurring adjacent to stream channels. Important species are willow, river birch, thin leaf alder, dogwood, currant, gooseberry, and raspberry shrubs.

The physiographic and vegetative diversity described above was a major attraction and factor in the classification in 1931 of the High Uintas Primitive Area. This recognition culminated in 1984 with passage of the Utah Wilderness Act which included a High Uintas Wilderness of 460,000 acres on the Wasatch and Ashley National Forests.

A total of 200,612 acres of the High Uintas Wilderness is included in this Administrative Unit (3).

C. Roosevelt Ranger District Exceptions to the Prescription:

Standards and guidelines for the Management Areas included within this Administrative Unit are applicable with the following modifications or exceptions:

Management Area b (ME2-MI3) - this moderate intensity timber management prescription is scheduled for implementation in decades 2, 3, 4, 5, 9, and 10. The roadside corridors for the lower Uinta and Lake Fork drainages include portions of this Management Area. These drainages serve as access to the High Uintas Wilderness and for the existing and proposed developed recreation sites in the Lake Fork drainage. As primary access corridors, they will be managed to conform to Management Area f standards and guidelines during decade 1. During the first decade, progress on the proposed developed recreation sites on or near the proposed Taseetch Reservoir should be used to determine changes in Management Area assignment for incorporation in the first scheduled Forest Plan revision.

Management Area e (ME4-MI4) - this Management Area occurs on Analysis Area 136 and Analysis Area 155 on the Vernal Ranger District. Implementation on Analysis Area 136 is scheduled during decade one. Implementation of Analysis Area 155 is scheduled during decade two and is a result of tentative identification of the area as key winter range for big game species. Management of Analysis Area 155 during decade one will be under the Standards and Guidelines specified for Management Area n, except that:

1. Key habitat should be inventoried and identified during decade one;
2. No permanent facilities or development should be allowed that would impair the key habitat characteristics during decade one; and
3. Any boundary revisions resulting from 1 above should be documented and incorporated in the first scheduled Forest Plan revision.

D. Management Areas within Roosevelt Ranger District (For details see Standards and Guidelines in this Chapter:

Management Area b - Management Emphasis (ME)2 - Management Intensity (MI)3 - 324 acres
Management Area d - ME3 - MI4 - 503 acres
Management Area e - ME4 - MI4 - 5,684 acres
Management Area f - ME5 - MI3 - 16,602 acres
Management Area g - ME5 - MI4 - 14,377 acres
Management Area i - ME7 - MI3 - 200,612 acres
Management Area k - ME8 - MI4 - 629 acres
Management Area n - ME11 - MI2 - 97,921 acres

Management areas are aggregations of analysis areas that have the same management prescription and are shown on the following tables. Management emphasis and management intensity numbers were used for identification during the FORPLAN modeling and are shown here to maintain prescription identity. The acreage figures indicate total acres for each management area.

Administrative Unit 3 - Roosevelt Ranger District

Analysis Areas Number	Total Acres in the Unit	Management Areas															
		b.		d.		e.		f.		g.		i.		k.		n.	
		ME2 Acres Allocated	MI3 Decade Implemented	ME3 Acres Alloc	MI4 Decade Impl	ME4 Acres Alloc	MI4 Decade Impl	ME5 Acres Alloc	MI3 Decade Impl	ME5 Acres Alloc	MI4 Decade Impl	ME7 Acres Alloc	MI3 Decade Impl	ME8 Acres Alloc	MI4 Decade Impl	ME11 Acres Alloc	MI2 Decade Impl
57	26															26	7
59	1,936											7	1			1,929	1
308	682															682	1
61	805															805	1
62	1,116															1,116	1
63	90															90	1
64	1,048															1,048	1
65	480	211	4									25	1		244	7	
68	140														140	11	
69	1,975											16	1		1,959	6	
70	7,446							36	11			136	1		7,274	2,3,4,5	
71	2,372							2,369	5,9			3	1				
72	1,435							34	7						1,401	6,7	
76	1,029									1,029	1						
77	757									757	2						
78	2,850									413	1	678	1		1,759	1	
79	200									5	1	5	1		190	1	
80	2,945									132	1	2,731	1		82	1	
81	1,356									233	1	545	1		578	1	
82	2,011									22	1	626	1		1,363	9,11	
84	4,686											3,245	1		1,441	6,7	
85	28,728									1,546	1	18,587	1		8,595	11,12	
86	3,031							2,636	3,4,7, 8,9	208	1	187	1				
87	1,516							1,002	9,8	514	1						
120	87							87	1								
121	1,471														1,471	1	
122	554														554	1	
124	42														42	1	
125	167	113	2,3,4					37	1						17	8	
127	368							368	1								

Administrative Unit 3 - Roosevelt Ranger District

Analysis Areas Number	Total Acres in the Unit	Management Areas																	
		b.		d.		e.		f.				g.		i.		k.		n.	
		ME2 Acres Allocated	MI3 Decade Implemented	ME3 Acres Alloc	MI4 Decade Impl	ME4 Acres Alloc	MI4 Decade Impl	ME5 Acres Alloc	MI3 Decade Impl	ME5 Acres Alloc	MI4 Decade Impl	ME7 Acres Alloc	MI3 Decade Impl	ME8 Acres Alloc	MI4 Decade Impl	ME11 Acres Alloc	MI2 Decade Impl		
128	1,317															1,317	7		
129	2,605							2,605	4,5										
130	11,262							528	2			20	1			10,714	1,2,7,8,9,11		
131	1,928							1,365	4							563	6		
132	965															965	3,4,5,6,7		
134	16															16	1,8,9,11		
135	7															7	5,9		
136	38					38	1												
140	84															84	1		
141	430															430	1		
142	225															225	1		
144	65							65	1,2,3,4,5										
147	276							266	5,6	10	1								
148	5,341							852	1	334	1	479	1			3,676	10,11,12		
149	446															446	6		
150	33							27	1,8	6	1								
155	2,478					2,478	2												
156	908															908	1		
162	6,541															6,541	1		
314	428															428	1		
163	922															922	1		
164	31							31	2,3,4										
165	1,243															1,243	6		
166	1,845															1,845	5,11		
167	5,219															5,219	3,4,5,8		
316	523															523	11		
168	2,586															2,586	2,3,4,5		
169	3,976															3,976	4,5,11		
170	2,880					2,880	1												
171	288					288	2												
173	760															760	1		
315	588							588	1										
174	1,617							1,455	2,3,4							162	6,9		
175	629													629		9,10			

Administrative Unit 3 - Roosevelt Ranger District

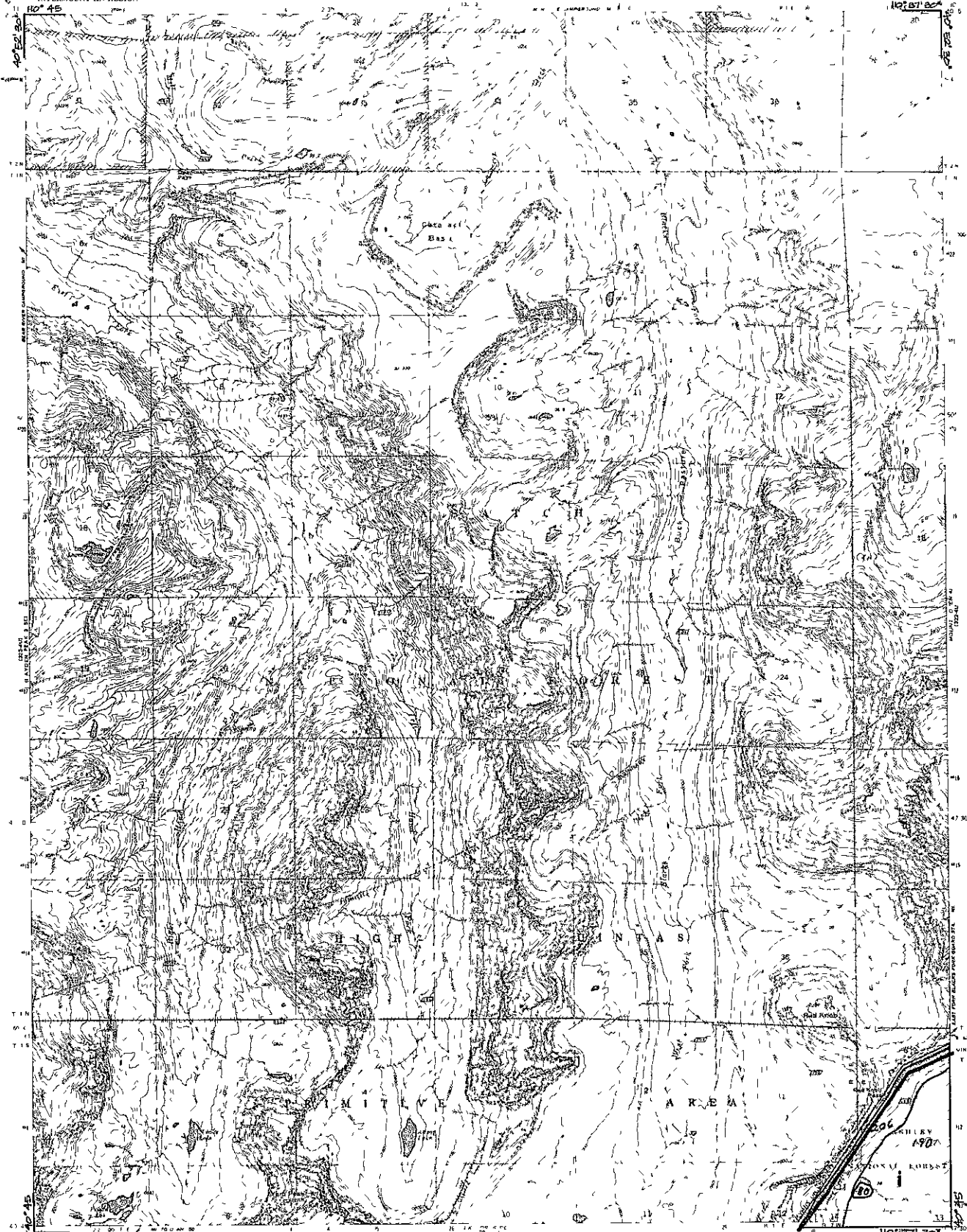
Management Areas

Analysis Areas Number	Total Acres in the Unit	b.		d.		e.		f.				g.		i.		k.		n.	
		ME2 Acres Allocated	MI3 Decade Implemented	ME3 Acres Alloc	MI4 Decade Impl	ME4 Acres Alloc	MI4 Decade Impl	ME5 Acres Alloc	MI3 Decade Impl	ME5 Acres Alloc	MI4 Decade Impl	ME7 Acres Alloc	MI3 Decade Impl	ME8 Acres Alloc	MI4 Decade Impl	ME11 Acres Alloc	MI2 Decade Impl		
317	1,132							1,132	2,3,4,5										
178	503			503	1														
179	251																	251	1
181	51																	51	1
182	738																	738	10
183	3,813																	3,813	6
184	5,613							18	3			38	1					5,557	1,2,3,4,5
185	330																	330	6
186	535							535	3,4,5										
189	1,780									204	1	746	1					830	1
190	28,276									498	1	27,527	1					251	1
191	12,362									413	1	11,665	1					284	1
193	624									59	1	462	1					103	6
194	67,866							355	3	3,452	1	58,968	1					5,091	1,2,3,4,5
195	218							213	3,4	5	1								
203	313							9	1			33	1					271	1
204	65																	65	1
205	185							6	1									179	1
206	43,963									1,318	1	42,164	1					481	1
207	5,996									309	1	4,538	1					1,037	1
208	32,206									2,798	1	27,181	1					2,227	1
Totals	336,680	324	-----	503	-----	5,684	-----	16,602	-----	14,377	-----	200,612	-----	629	-----	-----	-----	97,921	-----

Roosevelt Ranger District - 3

Quads in this section: 9, 10, 11, 12, 13, 14, 22, 23, 24, 25, 26, 27, 28,
36, 37, 38, 39, 40, 41, 42

ASHLEY NATIONAL FOREST



1927 No. 45
1927 No. 46
1927 No. 47
1927 No. 48
1927 No. 49
1927 No. 50
1927 No. 51
1927 No. 52
1927 No. 53
1927 No. 54
1927 No. 55
1927 No. 56
1927 No. 57
1927 No. 58
1927 No. 59
1927 No. 60
1927 No. 61
1927 No. 62
1927 No. 63
1927 No. 64
1927 No. 65
1927 No. 66
1927 No. 67
1927 No. 68
1927 No. 69
1927 No. 70
1927 No. 71
1927 No. 72
1927 No. 73
1927 No. 74
1927 No. 75
1927 No. 76
1927 No. 77
1927 No. 78
1927 No. 79
1927 No. 80
1927 No. 81
1927 No. 82
1927 No. 83
1927 No. 84
1927 No. 85
1927 No. 86
1927 No. 87
1927 No. 88
1927 No. 89
1927 No. 90
1927 No. 91
1927 No. 92
1927 No. 93
1927 No. 94
1927 No. 95
1927 No. 96
1927 No. 97
1927 No. 98
1927 No. 99
1927 No. 100

ROAD CLASSIFICATION
Heavy D ty ——— Med in Duty ———
Light D ty ——— Un improved Dty ———
Trail

ANALYSIS AREA
TOWNSHIP AND SECTION LINE CLASSIFICATION

OTHER OWNERSHIP
U surveyed Bureau of Land Management
D surveyed Bureau of Land Management

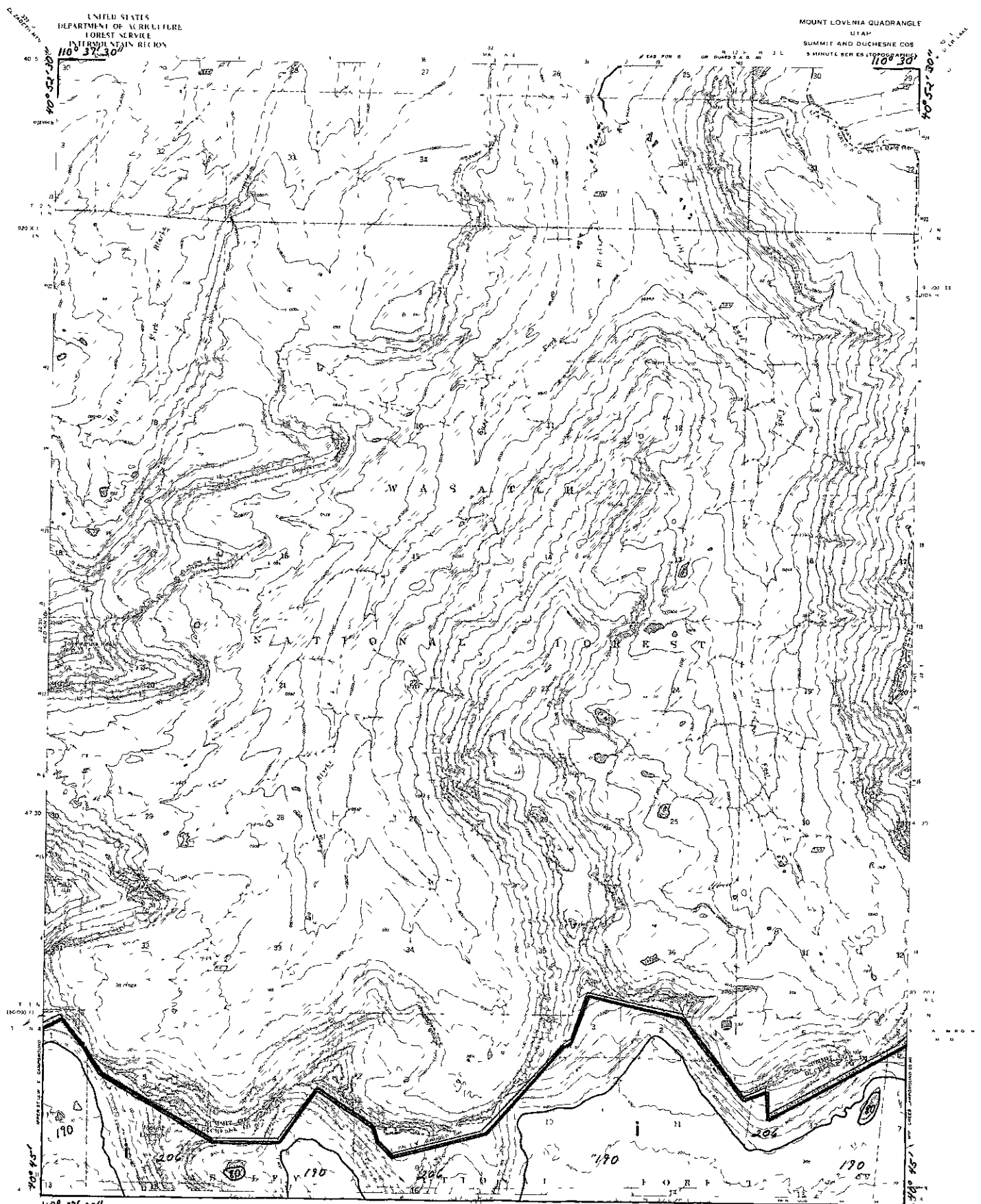
MANAGEMENT AREA

RED KNOB 9
ROOSEVELT COUNTY, MONTANA
1927

100
1927

900-911

n



MOUNT LOVENIA 10

ANALYSIS AREA

OTHER OWNERSHIP

MANAGEMENT AREA

100

900-911

n

ROAD CLASSIFICATION

10A 15M 4 E

HAYDEN PLAIN SL
MOUNTAIN AND
ROOSEVELT BASSIN DISTRICTS

110° 37' 30"
110° 37' 30"
110° 37' 30"
110° 37' 30"

110° 30"
110° 30"
110° 30"
110° 30"

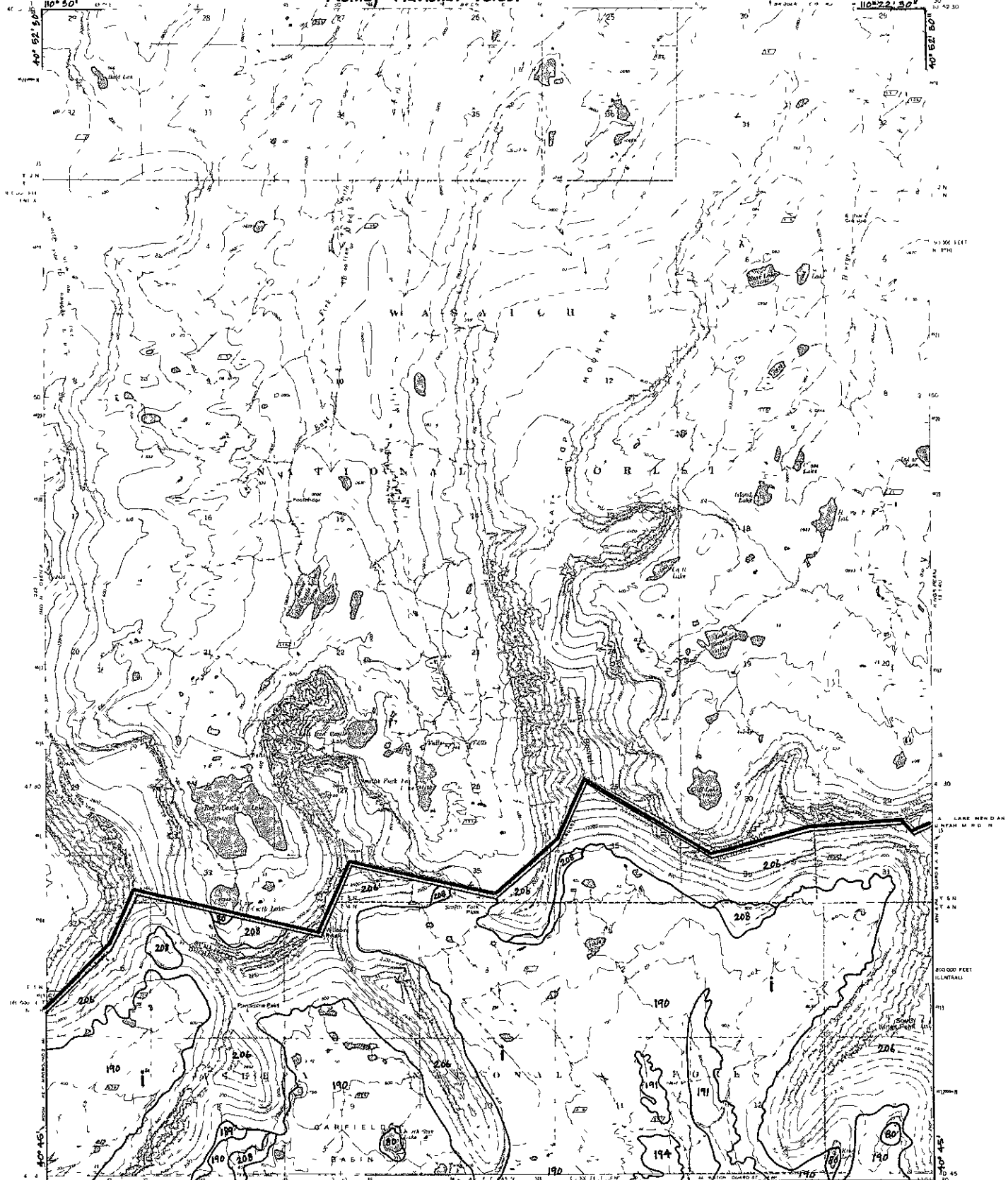
110° 37' 30"
110° 37' 30"
110° 37' 30"
110° 37' 30"

110° 30"
110° 30"
110° 30"
110° 30"

UNITED STATES
DEPARTMENT OF AGRICULTURE
FOREST SERVICE
INTERMOUNTAIN REGION

Ashley National Forest

MOUNT POWELL QUADRANGLE
UTAH
SUMMIT AND DULCHESNE COGS
7.5 MINUTE (1:50,000) TOPOGRAPHIC



110° 50' 110° 22' 50'

MOUNT POWELL 11

ANALYSIS AREA

OTHER OWNERSHIP

MANAGEMENT AREA

100

900-911

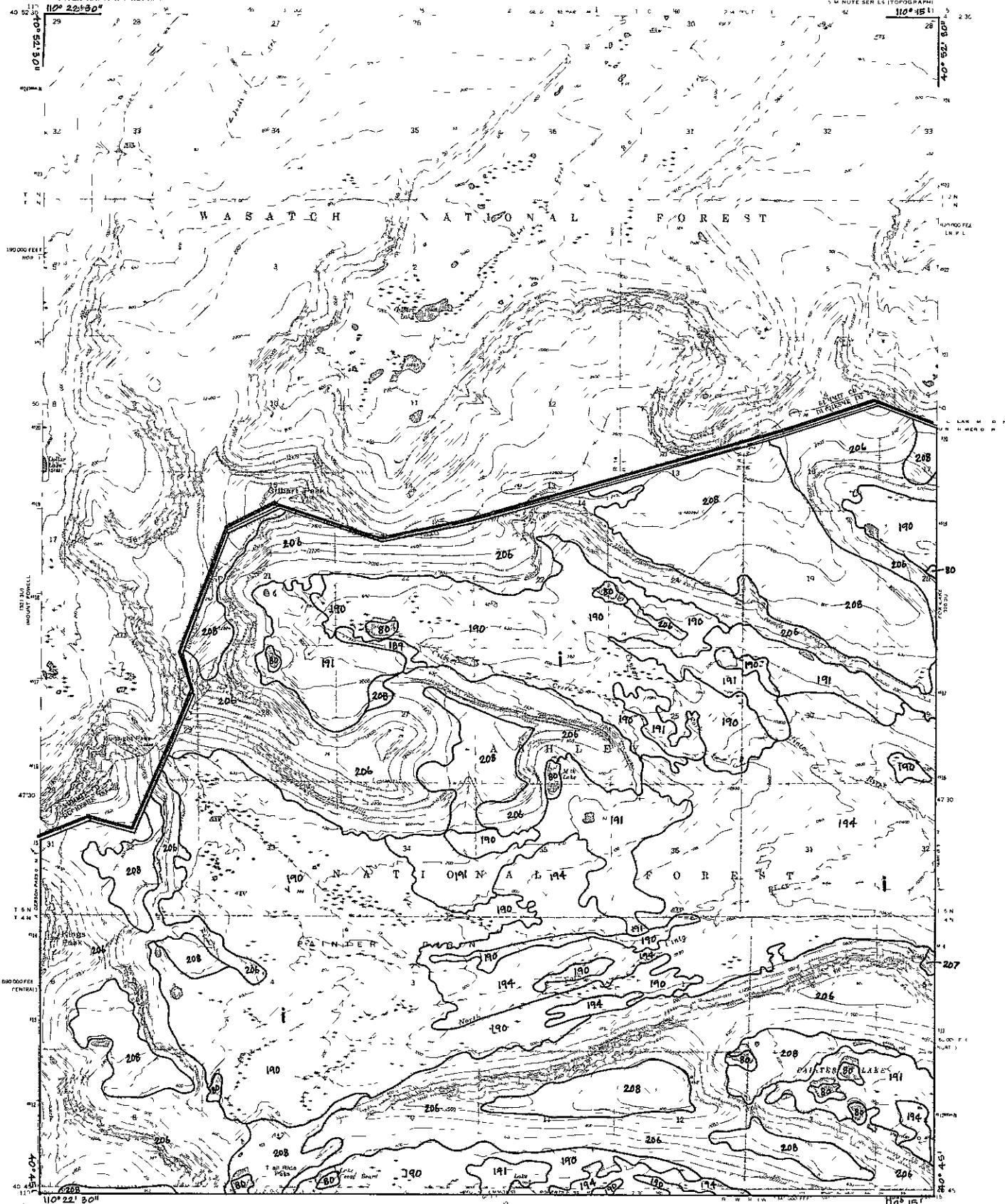
n

ROAD CLASSIFICATION

TOWNSHIP AND SECTION LINE CLASSIFICATION

Universal Scale of Feet

Ashley National Forest



ANALYSIS AREA

OTHER OWNERSHIP
MANAGEMENT AREA

KING'S PEAK 12

100

900-911

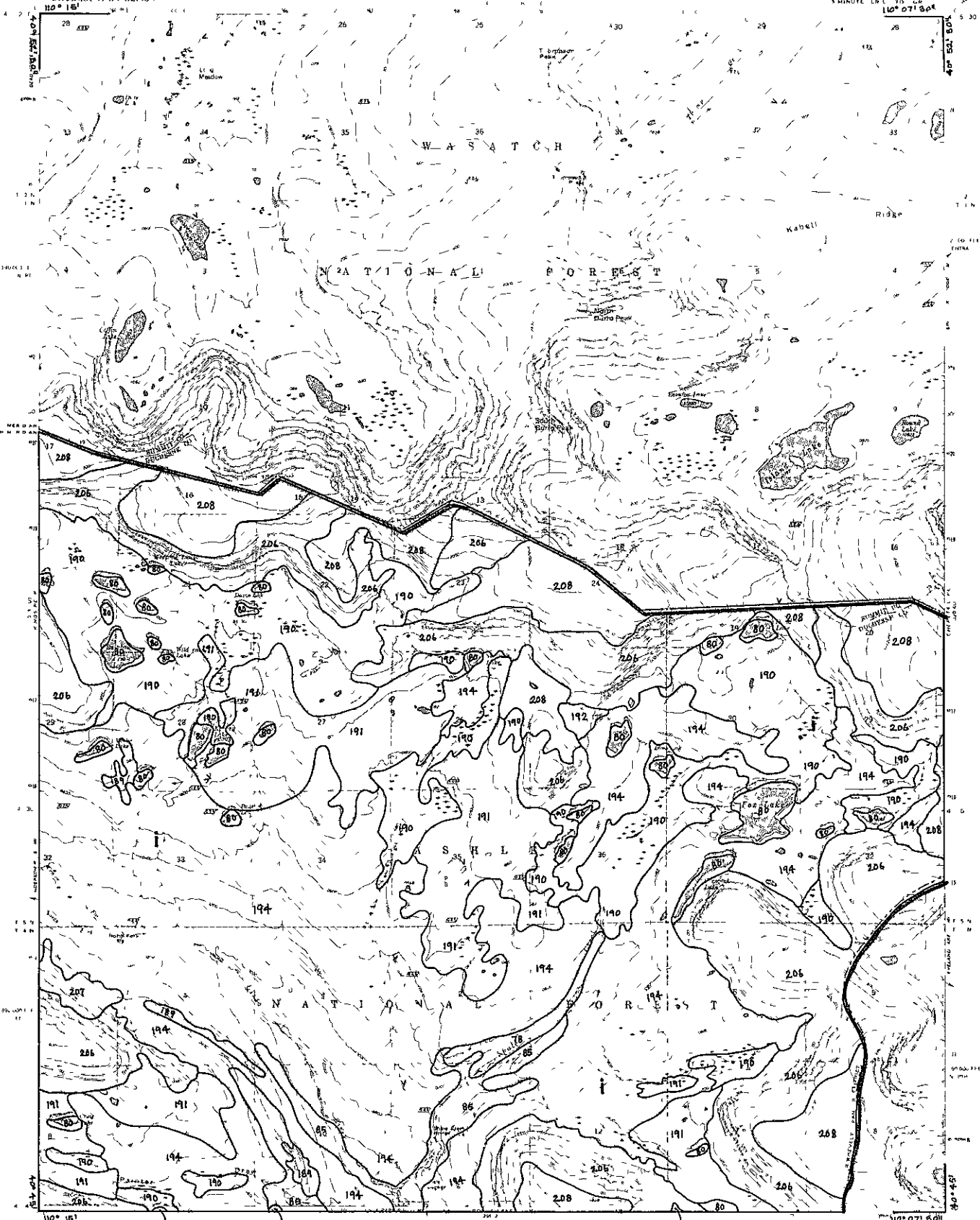
n

ROAD CLASSIFICATION

TOWNSHIP AND SECTION LINE CLASSIFICATION

U.S. GOVERNMENT PRINTING OFFICE

Ashley National Forest



ROAD CLASSIFICATION
T.R.

TOWNSHIP AND SECTION LINE CLASSIFICATION

OTHER OWNERSHIP

MANAGEMENT AREA

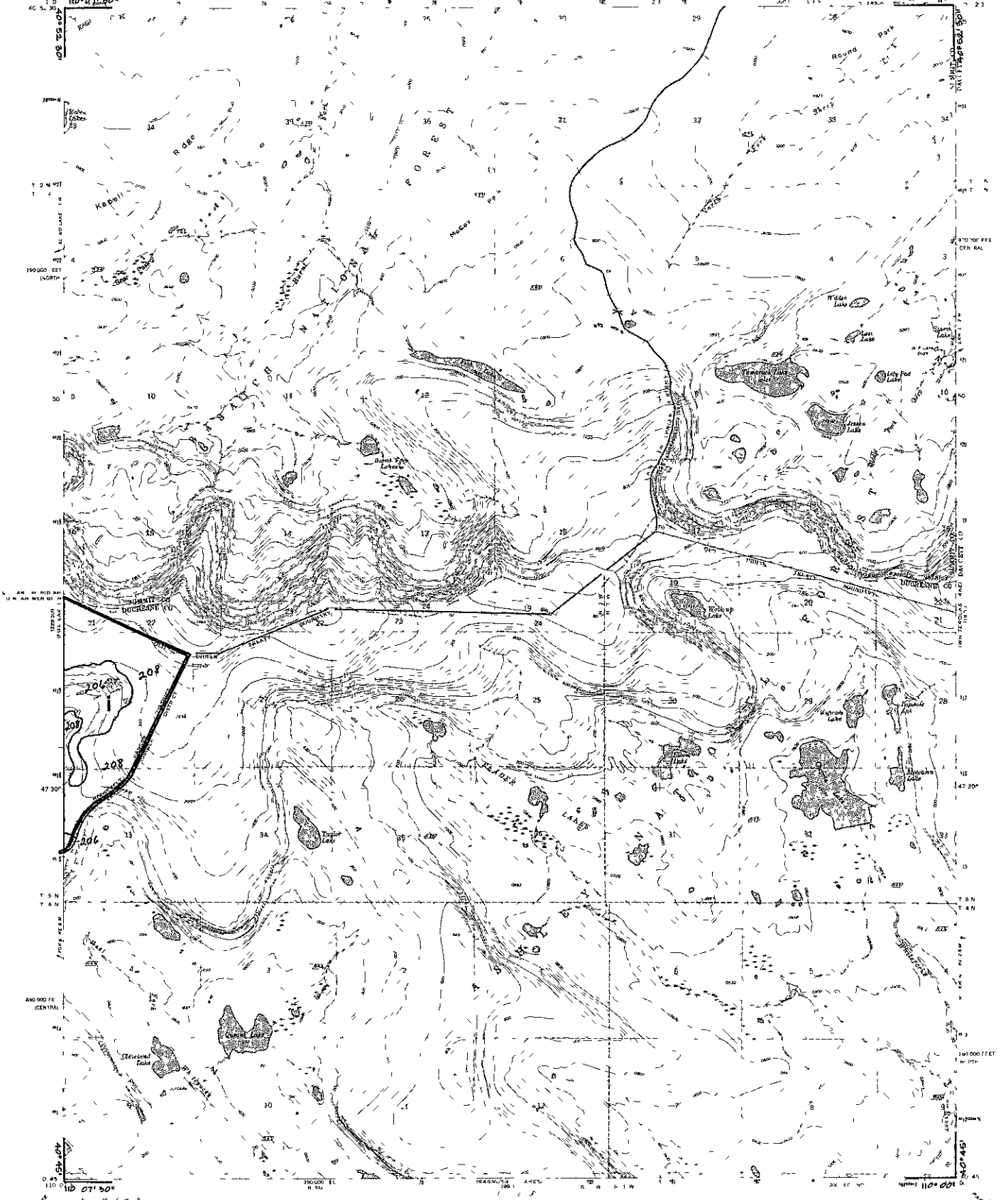
FOX LAKE 13
100

900-911

n

U.S. GEOLOGICAL SURVEY
No. 1111 1:62,500

Ashley National Forest



CHEPETA LAKE 14

ANALYSIS AREA
TOWNSHIP AND SECTION LINE CLASSIFICATION BY
Surveyed location in the
OTHER OWNERSHIP
Unsurveyed Bureau of Land
Management, pro action

GILBERT PEAK 1 SE
100
900-911

MANAGEMENT AREA

n

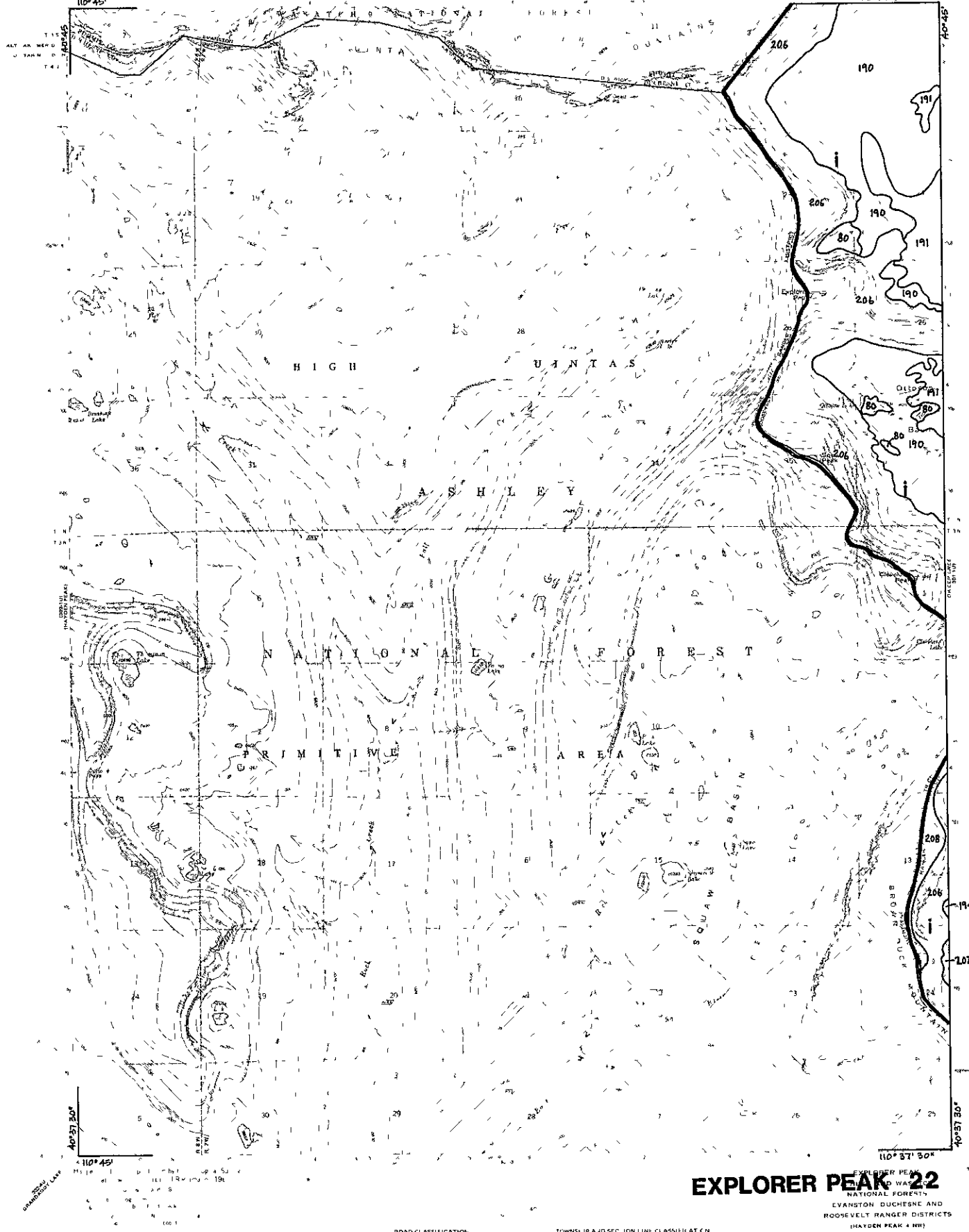
Orthophotograph prepared from 1:50,000 scale
aerial photograph taken September 26, 1970
Photography corrected by automatic
correction

ROAD CLASSIFICATION
Light D by Unimproved E

UNITED STATES
DEPARTMENT OF AGRICULTURE
FOREST SERVICE
INTERMOUNTAIN REGION
110° 45'

Ashley National Forest

EXPLORER PEAK QUADRANGLE
UTAH SUMMIT AND
DUCHESNE COS
7.5 MINUTE SERIES TOPOGRAPHIC
110° 37' 30"



EXPLORER PEAK 22

NATIONAL FOREST
EVANSTON DUCHESNE AND
ROOSEVELT RANGER DISTRICTS
(HAYDEN PEAK 4 NW)
1972
301 20

ROAD CLASSIFICATION
Heavy Duty ———— Med. in Duty ————
Light Duty ———— In micro ed. lit. ————
T. 11

TOWNSHIP AND SECTION LINE CLASSIFICATION
————— Survey location reliable

ANALYSIS AREA
U.S. Survey of Land Management projection

OTHER OWNERSHIP

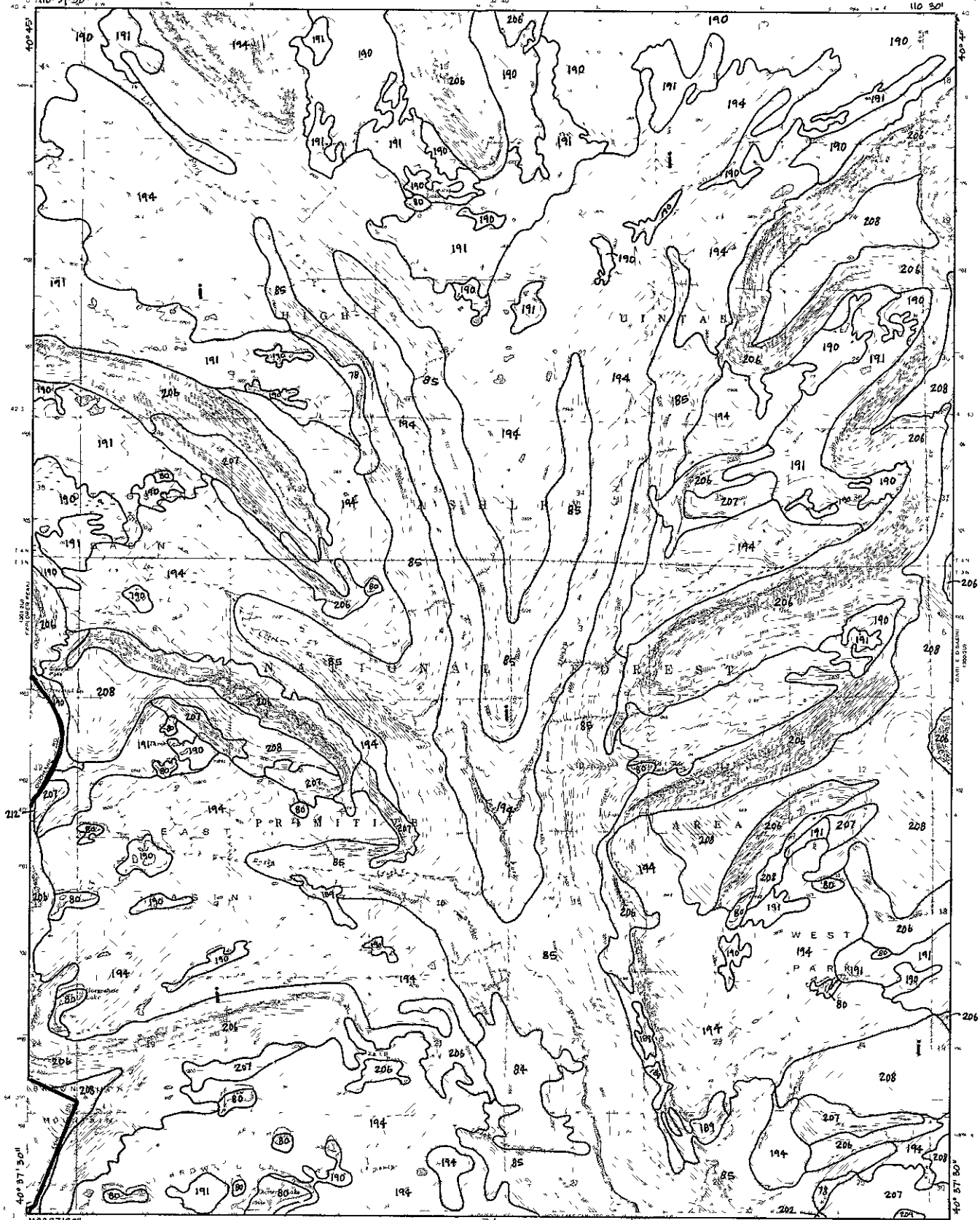
100

900-911

U.S. Forest Service, Office of Planning and Administration, Denver, Colorado
Aerial photography from 1963 through 1972
Stereopair and Vertical Photo
Ortho photograph prepared from 1:50,000 scale
aerial photograph taken August 27, 1976
Photomagnified by automatic color process

Ashley National Forest

FILE NO. 110 301



ANALYSIS AREA

OWEEP CREEK 23

OTHER OWNERSHIP
MANAGEMENT AREA

100
900-911
n

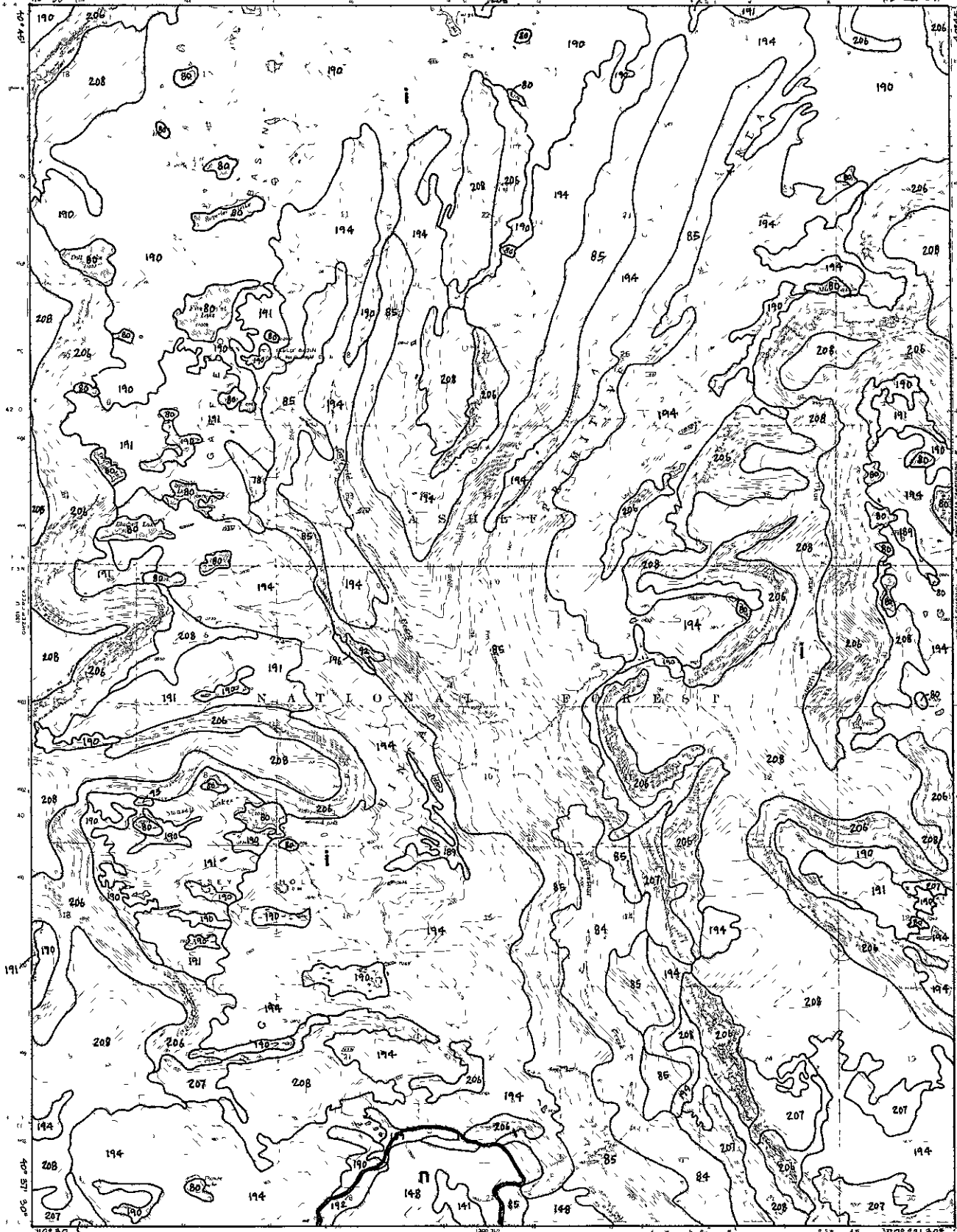
Plan, Sheet 1 of 2, 110 301, 110 302, 110 303, 110 304, 110 305, 110 306, 110 307, 110 308, 110 309, 110 310, 110 311, 110 312, 110 313, 110 314, 110 315, 110 316, 110 317, 110 318, 110 319, 110 320, 110 321, 110 322, 110 323, 110 324, 110 325, 110 326, 110 327, 110 328, 110 329, 110 330, 110 331, 110 332, 110 333, 110 334, 110 335, 110 336, 110 337, 110 338, 110 339, 110 340, 110 341, 110 342, 110 343, 110 344, 110 345, 110 346, 110 347, 110 348, 110 349, 110 350, 110 351, 110 352, 110 353, 110 354, 110 355, 110 356, 110 357, 110 358, 110 359, 110 360, 110 361, 110 362, 110 363, 110 364, 110 365, 110 366, 110 367, 110 368, 110 369, 110 370, 110 371, 110 372, 110 373, 110 374, 110 375, 110 376, 110 377, 110 378, 110 379, 110 380, 110 381, 110 382, 110 383, 110 384, 110 385, 110 386, 110 387, 110 388, 110 389, 110 390, 110 391, 110 392, 110 393, 110 394, 110 395, 110 396, 110 397, 110 398, 110 399, 110 400, 110 401, 110 402, 110 403, 110 404, 110 405, 110 406, 110 407, 110 408, 110 409, 110 410, 110 411, 110 412, 110 413, 110 414, 110 415, 110 416, 110 417, 110 418, 110 419, 110 420, 110 421, 110 422, 110 423, 110 424, 110 425, 110 426, 110 427, 110 428, 110 429, 110 430, 110 431, 110 432, 110 433, 110 434, 110 435, 110 436, 110 437, 110 438, 110 439, 110 440, 110 441, 110 442, 110 443, 110 444, 110 445, 110 446, 110 447, 110 448, 110 449, 110 450, 110 451, 110 452, 110 453, 110 454, 110 455, 110 456, 110 457, 110 458, 110 459, 110 460, 110 461, 110 462, 110 463, 110 464, 110 465, 110 466, 110 467, 110 468, 110 469, 110 470, 110 471, 110 472, 110 473, 110 474, 110 475, 110 476, 110 477, 110 478, 110 479, 110 480, 110 481, 110 482, 110 483, 110 484, 110 485, 110 486, 110 487, 110 488, 110 489, 110 490, 110 491, 110 492, 110 493, 110 494, 110 495, 110 496, 110 497, 110 498, 110 499, 110 500, 110 501, 110 502, 110 503, 110 504, 110 505, 110 506, 110 507, 110 508, 110 509, 110 510, 110 511, 110 512, 110 513, 110 514, 110 515, 110 516, 110 517, 110 518, 110 519, 110 520, 110 521, 110 522, 110 523, 110 524, 110 525, 110 526, 110 527, 110 528, 110 529, 110 530, 110 531, 110 532, 110 533, 110 534, 110 535, 110 536, 110 537, 110 538, 110 539, 110 540, 110 541, 110 542, 110 543, 110 544, 110 545, 110 546, 110 547, 110 548, 110 549, 110 550, 110 551, 110 552, 110 553, 110 554, 110 555, 110 556, 110 557, 110 558, 110 559, 110 560, 110 561, 110 562, 110 563, 110 564, 110 565, 110 566, 110 567, 110 568, 110 569, 110 570, 110 571, 110 572, 110 573, 110 574, 110 575, 110 576, 110 577, 110 578, 110 579, 110 580, 110 581, 110 582, 110 583, 110 584, 110 585, 110 586, 110 587, 110 588, 110 589, 110 590, 110 591, 110 592, 110 593, 110 594, 110 595, 110 596, 110 597, 110 598, 110 599, 110 600, 110 601, 110 602, 110 603, 110 604, 110 605, 110 606, 110 607, 110 608, 110 609, 110 610, 110 611, 110 612, 110 613, 110 614, 110 615, 110 616, 110 617, 110 618, 110 619, 110 620, 110 621, 110 622, 110 623, 110 624, 110 625, 110 626, 110 627, 110 628, 110 629, 110 630, 110 631, 110 632, 110 633, 110 634, 110 635, 110 636, 110 637, 110 638, 110 639, 110 640, 110 641, 110 642, 110 643, 110 644, 110 645, 110 646, 110 647, 110 648, 110 649, 110 650, 110 651, 110 652, 110 653, 110 654, 110 655, 110 656, 110 657, 110 658, 110 659, 110 660, 110 661, 110 662, 110 663, 110 664, 110 665, 110 666, 110 667, 110 668, 110 669, 110 670, 110 671, 110 672, 110 673, 110 674, 110 675, 110 676, 110 677, 110 678, 110 679, 110 680, 110 681, 110 682, 110 683, 110 684, 110 685, 110 686, 110 687, 110 688, 110 689, 110 690, 110 691, 110 692, 110 693, 110 694, 110 695, 110 696, 110 697, 110 698, 110 699, 110 700, 110 701, 110 702, 110 703, 110 704, 110 705, 110 706, 110 707, 110 708, 110 709, 110 710, 110 711, 110 712, 110 713, 110 714, 110 715, 110 716, 110 717, 110 718, 110 719, 110 720, 110 721, 110 722, 110 723, 110 724, 110 725, 110 726, 110 727, 110 728, 110 729, 110 730, 110 731, 110 732, 110 733, 110 734, 110 735, 110 736, 110 737, 110 738, 110 739, 110 740, 110 741, 110 742, 110 743, 110 744, 110 745, 110 746, 110 747, 110 748, 110 749, 110 750, 110 751, 110 752, 110 753, 110 754, 110 755, 110 756, 110 757, 110 758, 110 759, 110 760, 110 761, 110 762, 110 763, 110 764, 110 765, 110 766, 110 767, 110 768, 110 769, 110 770, 110 771, 110 772, 110 773, 110 774, 110 775, 110 776, 110 777, 110 778, 110 779, 110 780, 110 781, 110 782, 110 783, 110 784, 110 785, 110 786, 110 787, 110 788, 110 789, 110 790, 110 791, 110 792, 110 793, 110 794, 110 795, 110 796, 110 797, 110 798, 110 799, 110 800, 110 801, 110 802, 110 803, 110 804, 110 805, 110 806, 110 807, 110 808, 110 809, 110 810, 110 811, 110 812, 110 813, 110 814, 110 815, 110 816, 110 817, 110 818, 110 819, 110 820, 110 821, 110 822, 110 823, 110 824, 110 825, 110 826, 110 827, 110 828, 110 829, 110 830, 110 831, 110 832, 110 833, 110 834, 110 835, 110 836, 110 837, 110 838, 110 839, 110 840, 110 841, 110 842, 110 843, 110 844, 110 845, 110 846, 110 847, 110 848, 110 849, 110 850, 110 851, 110 852, 110 853, 110 854, 110 855, 110 856, 110 857, 110 858, 110 859, 110 860, 110 861, 110 862, 110 863, 110 864, 110 865, 110 866, 110 867, 110 868, 110 869, 110 870, 110 871, 110 872, 110 873, 110 874, 110 875, 110 876, 110 877, 110 878, 110 879, 110 880, 110 881, 110 882, 110 883, 110 884, 110 885, 110 886, 110 887, 110 888, 110 889, 110 890, 110 891, 110 892, 110 893, 110 894, 110 895, 110 896, 110 897, 110 898, 110 899, 110 900, 110 901, 110 902, 110 903, 110 904, 110 905, 110 906, 110 907, 110 908, 110 909, 110 910, 110 911, 110 912, 110 913, 110 914, 110 915, 110 916, 110 917, 110 918, 110 919, 110 920, 110 921, 110 922, 110 923, 110 924, 110 925, 110 926, 110 927, 110 928, 110 929, 110 930, 110 931, 110 932, 110 933, 110 934, 110 935, 110 936, 110 937, 110 938, 110 939, 110 940, 110 941, 110 942, 110 943, 110 944, 110 945, 110 946, 110 947, 110 948, 110 949, 110 950, 110 951, 110 952, 110 953, 110 954, 110 955, 110 956, 110 957, 110 958, 110 959, 110 960, 110 961, 110 962, 110 963, 110 964, 110 965, 110 966, 110 967, 110 968, 110 969, 110 970, 110 971, 110 972, 110 973, 110 974, 110 975, 110 976, 110 977, 110 978, 110 979, 110 980, 110 981, 110 982, 110 983, 110 984, 110 985, 110 986, 110 987, 110 988, 110 989, 110 990, 110 991, 110 992, 110 993, 110 994, 110 995, 110 996, 110 997, 110 998, 110 999, 110 1000

ROAD CLASSIFICATION

Heavy D. 1/2" ———— Medium D. 1/4" ————
Light D. 1/8" ———— Unimproved D. 1/16" ————
Su. veyed location approx. ————
Unsu. veyed location approx. ————

U.S. Forest Service
Management Information

Ashley National Forest



Scale: 1 inch = 1 mile
Map Date: 1972
Map No. 100

ROAD CLASSIFICATION
Heavy Duty ————
Light Duty ————
Unimproved Dirt ————
T all

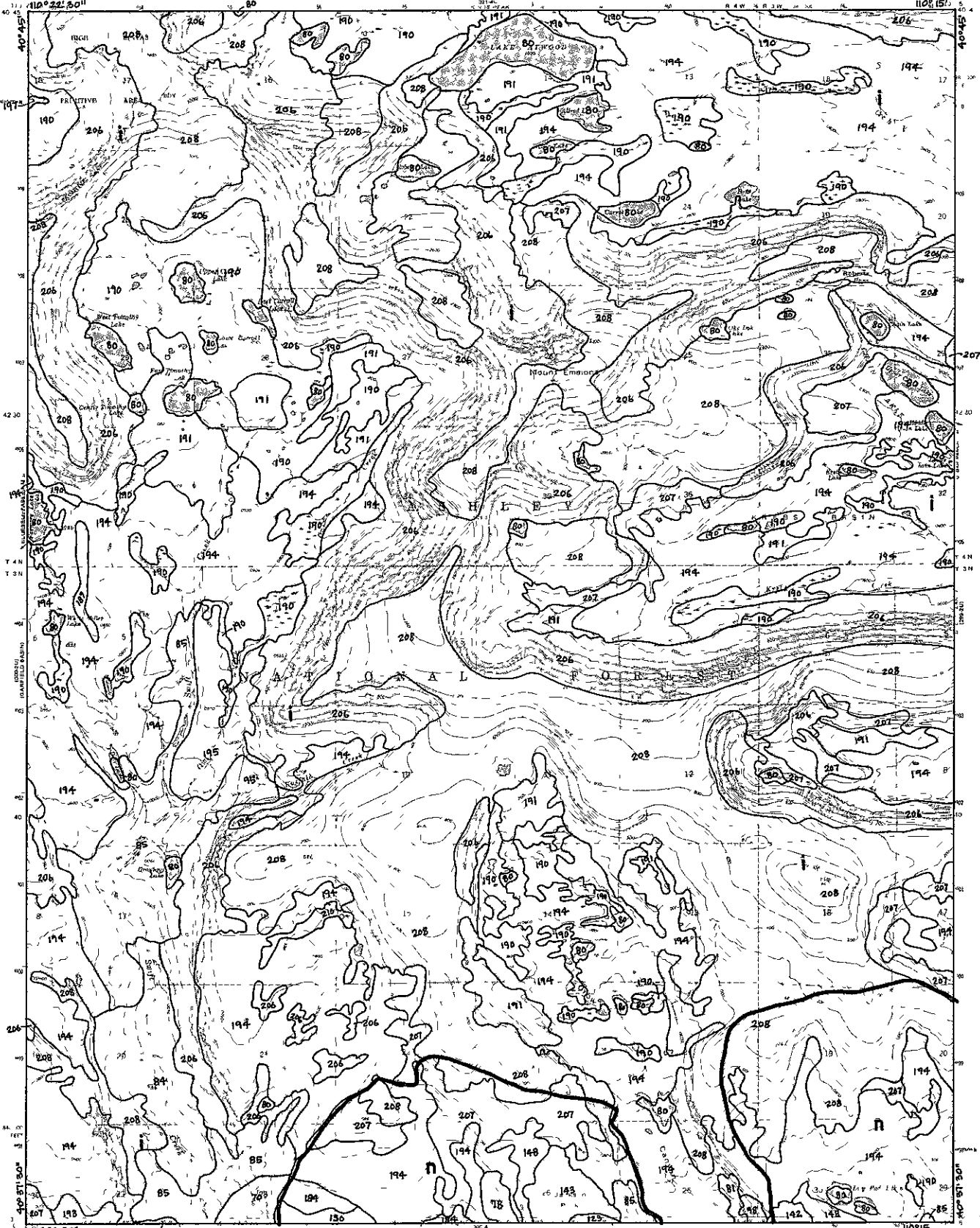
TOWNSHIP AND SECT ON LINE CLASSIFICATION
ANALYSIS AREA
Surveyed for the approx. to

OTHER OWNERSHIP
MANAGEMENT AREA

GARFIELD BASIN
GARFIELD BASIN 24

100
900-911
n

Ashley National Forest



MOUNT EMMONS 25

MOUNT EMMONS
GILBERT PEAK 3 NE

100

900-911

n

ANALYSIS AREA

OTHER OWNERSHIP

MANAGEMENT AREA

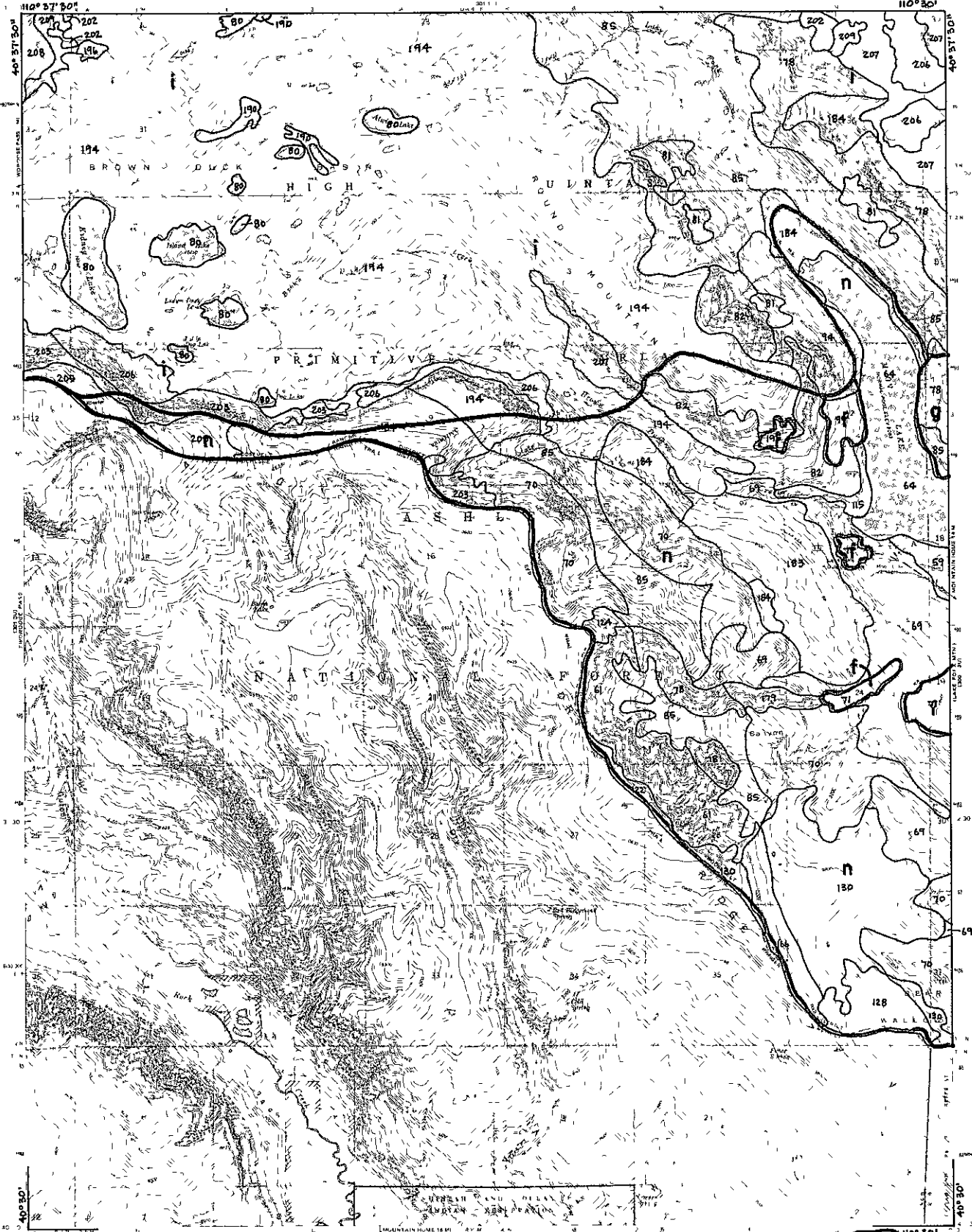
ROAD CLASSIFICATION

Heavy Duty Medium Duty
Light Duty Unimproved

Scale: 1 inch = 2 miles
U.S. G.P.O. : 1967 O-350-000
This map was prepared by the U.S. Forest Service

Ashley National Forest

Scale 1:50,000
G.S. 2500



ANALYSIS AREA

KIDNEY LAKE 37

100
900-911
n

OTHER OWNERSHIP

MANAGEMENT AREA

ROAD CLASSIFICATION
Heavy Duty ———— Med. H.D. by ————
Light Duty ———— Unimproved Dirt ————

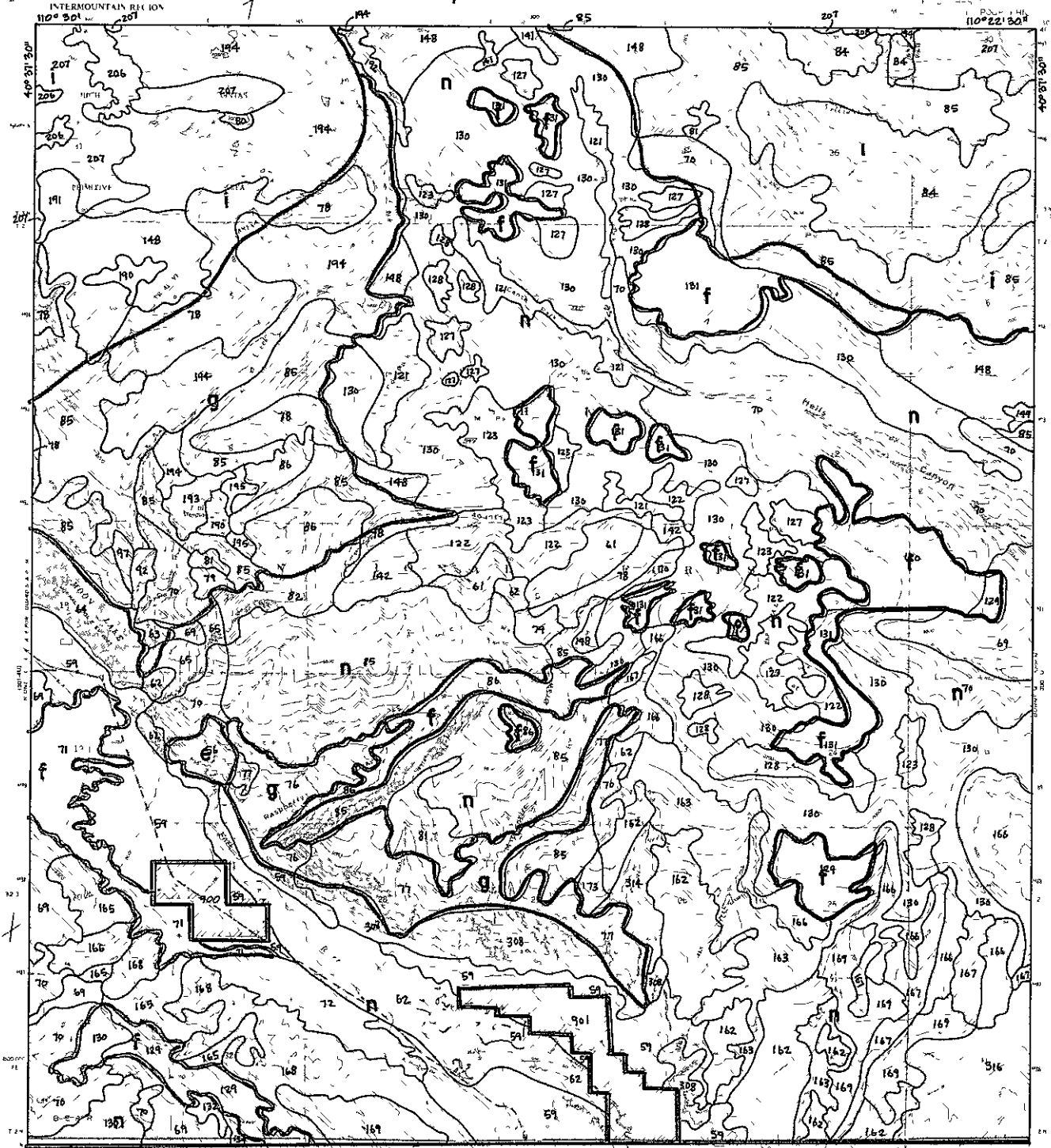
TOWNSHIP AND SECTION LINE CLASSIFICATION
Surveyed 1/20/1978

Revised 1/1/78
And the same as 1978 photos in
and 19 2 miles
to the west
Orthophoto map in plan view 80' x 60' +
and a photograph taken A 2 517 1878
Photomaps by aerial photo interpretation
100

U.S. Surveyed 1/20/1978
Management protection

Ashley National Forest

LAKE FORK MOUNTAIN QUADRANGLE



UTAH SAMPSON INDIAN RESERVATION

LAKE FORK MOUNTAIN 38

ANALYSIS AREA

OTHER OWNERSHIP

MANAGEMENT AREA

100

900-911

n

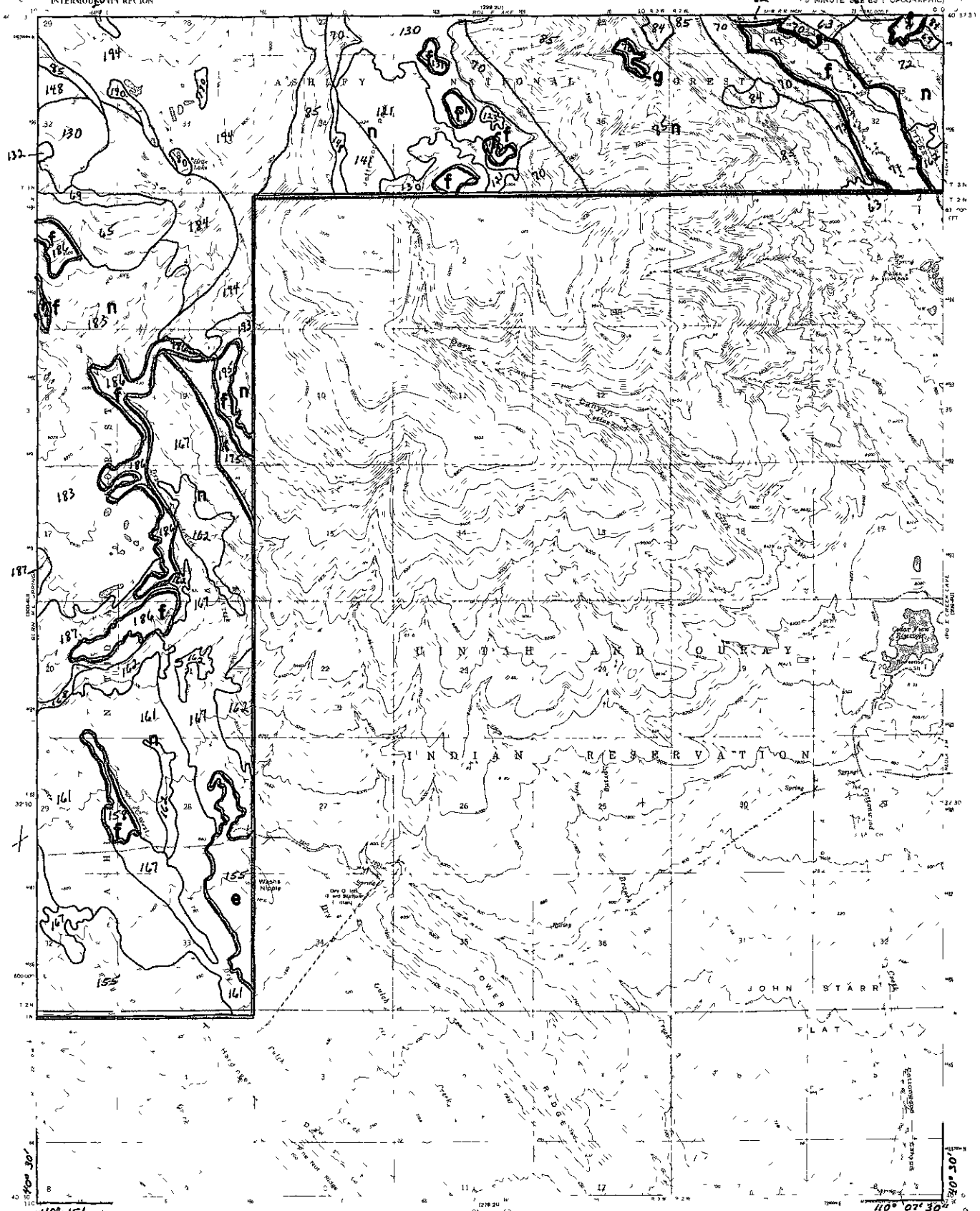
ROAD CLASSIFICATION

Heavy Duty ————— Modified ————

Light Duty ———— Unimproved Dirt ————

T. 11

Approx. 1967
Scale 1:50,000
UTAH STATE GEOLOGIC SURVEY
UTAH STATE UNIVERSITY
L. D. SMITH



HELLER LAKE 40

ANALYSIS AREA
TOWNSHIP AND SECTION LINE CLASSIFICATION

ROAD CLASSIFICATION
 Heavy Duty _____
 Medium Duty _____
 Light Duty _____
 Unimproved DRT _____
 Trail _____

OTHER OWNERSHIP
 Surveyed location reliable
 Unsurveyed Bureau of Land Management protection

MANAGEMENT AREA

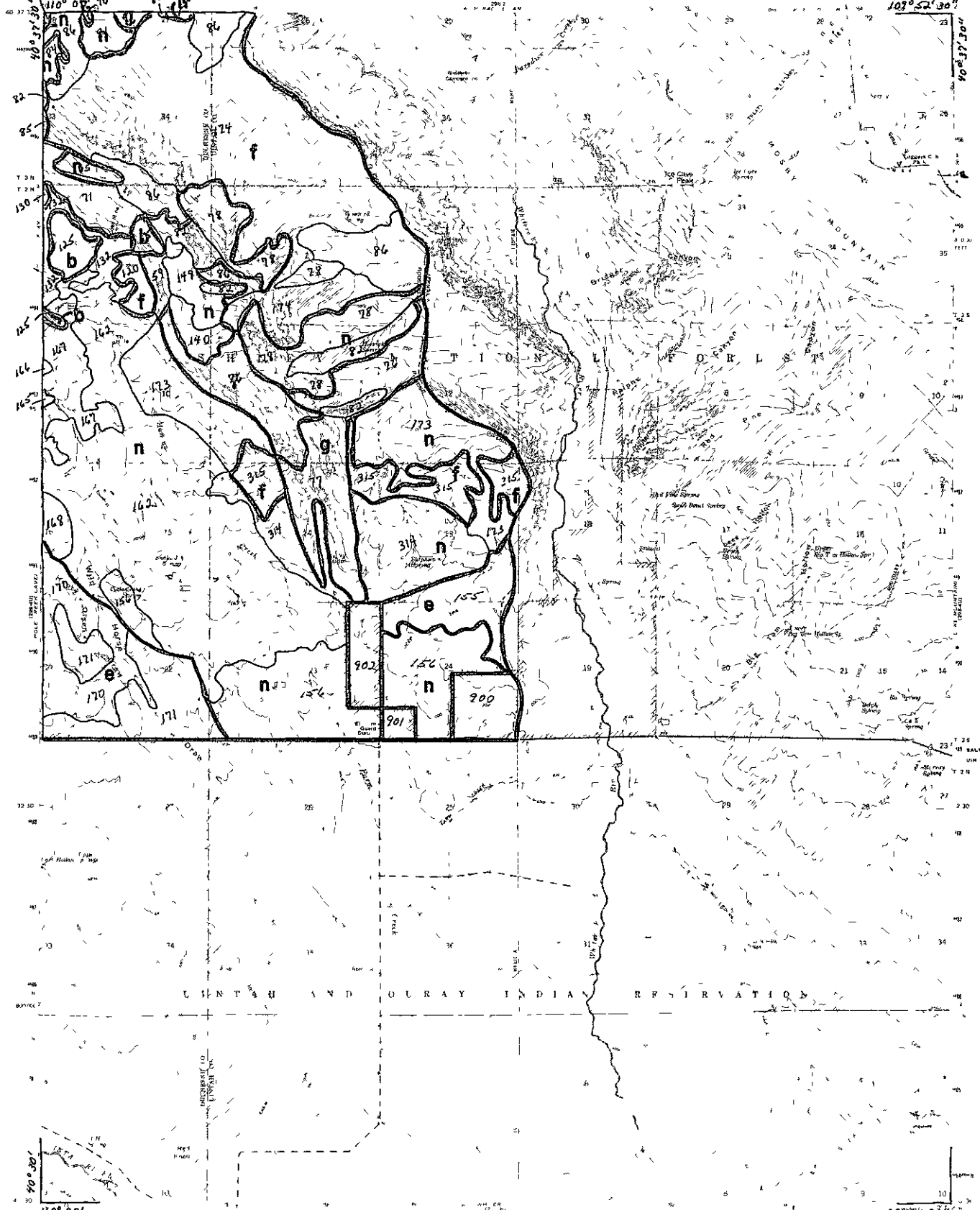
HELLER LAKE
 ASHLEY NATIONAL FOREST
 7.5 MINUTE SERIES (TOPOGRAPHIC)
 (G11, 1980 EDITION)

100

900-911

n

Revised by USFS M.D. 3rd Ed. 1972
 All names and line evidence from 1920 topographic
 map at 1:25,000 scale
 U.S. Mountain
 T-1 map, modified with National Map Act by SI 1482



ICE CAVE PEAK 42

ICE CAVE PEAK
NATIONAL FOREST
VERNAL AND ROOSEVELT
RANGER DISTRICTS
(MARSH PEAK 3 SW)
1972
208 310

100

900-911

n

ROAD CLASSIFICATION

TOWN PLANNING SECTION LINE CLASSIFICATION

ANALYSIS AREA

OTHER OWNERSHIP

MANAGEMENT AREA

Map 1 based on U.S. Forest Service maps and other sources.
Aerial photography used in this map was taken in 1966, 1968, and 1972.
Scale: 1 inch = 1 mile
This map is prepared by the Forest Service, U.S. Department of Agriculture.
Photography was taken at 10000' scale.
Photography was taken by A. G. S. W.
Photography was taken by a 100mm lens.
10