

?Wa? De? T'i'me?



It Grows Here

Native Plants of the Tahoe Basin

U.S. Forest Service
Wašiw Wagayay Maŋal

?Wa? De? T' i'me? has been made possible through the U.S. Forest Service and Washoe language school, Wašiw Wagayay Maŋal.

The Lake Tahoe region is the center of the Washoe people. This book shows some of the plants and animals in our area. The Washoe people continue to utilize their resources as well as pass on the knowledge to their children. The plants featured in this book are used for food, medicine, and or building materials.

Léw dí·gum bedugémset huya? Dit'ŋáwa.
Di·me? ida dewt`é?eš de·we?ye? aŋaw hulew,
diŋamí·?miŋ léwe.
*(We will help each other to protect and preserve our land,
water and air for generations to come.)*

Special thanks to all of those who contributed to this book.

National Endowment of the Arts
Washiw Wagayay Maŋal
1557 Watasheamu
Gardnerville, NV 89460
(775) 265-7274



Šú'gilá'ʔc'í' (shoo-gil-au-tzee)
Arrowleaf, balsamroot sunflower
Balsamorhiza sagittata



Dú'ni (Dune-ee)
Golden brodiaea
Brodiaea ixiooides var. lugens



Doc'a (dotza)
Balsam root
Balsamorhiza deltoidea



Šú'gil (shoo-gill)
Woolly Mule's Ear
Wyethia mollis



Maʔhal (Mah-hall)
White brodiaea *Brodiaea hyacinina*



Kókš'i? (ko-k-sheh)
Botanical name is unknown. This plant is found in the lower elevations, whereas the sego lily is found in the higher elevations.



Kókš'i? (ko-k-sheh)
Sego Lily,
Mariposa lily
Calochortus bruneaunis



Bo'p'o? (bo-p-o)
rabbitbrush
chrysothamnus



Sila't'awhu (silah-tz-aw-hoo)
Tiger Lily
Lilium parvum



Mahat'alal (ma-hat-alal)
Cattail *typha latifolia*
mahalt'alal lo'po?
(brown part)
C'o?ya? tule



Mé'gel (meg-ell)
Indian tea /
Morman tea
ephedra viridis

?Wa? De? T' i'me?

Dewdilek
or
Mosan



dew-delek
mos-ang

Indian Paintbrush
Castilleja, red



Pec'umeli? (petz-umel-eeh)
Wild rose *rosa woodsii*

It Grows Here - Native Plants of the Tahoe Basin



There are four different lupin used in the area: délem dam?lá'k'im, badaci, wadaša, and ziwziwho



Gewe múkuš
(Geh-weh moo-kuh-sh)
Snow Plant
Sacodes sanguinea



Wémši?
(wemsheh)
Common Yarrow
achillea



Nanhólwa? (nan-hole-wah)
Golden Current *Ribes aureum*



Ma?alaji? (Mah-all-aung-eeh)
Wild Strawberry *fragaria virginiana*



Šu?wetik
(shoo-wet-uk)
Western Service Berry
Amelanchier



C'amdu? (tz-ahm-do)
Western Chokecherry
Prunus virginiana var. *demissa*



Bad'u?
(bah-dooh)
Blue Elderberry
Sambucus glauca



Badópo? (baa-doe-po)
Corn Lily *veratrum californicum*



K'ōmho (kh-om-ho)
Cow parsnip *Heracleum lanatum*



Dít'eš ?emlu
(dit-ish em-loo)
Peppermint
Menthus



Šáwa? mó'ba?
(shaw-wah mau-bah)
Pine Mat Manzanita
Arctostaphylos nevahdenis

?Eyéye?
(ay-eh-yeh)
Green Manzanita
Arctostaphylos patula





Tuyá'gimhu (too-yah-gum-hoo)
Western Peony *Paeonia brownii*



?Ulipa'ntz'a
(oolee-pon-tza)
Watercress
Barbarea orthocerus



Búye?
ida pu?yewli?
(booh-yeh /or puh-yeh-
lit)
Western Blue Flag
Iris Missouriensis



Himu
(Him-oo)
Willow
Salix spp.



Búye? ida
pu?yewli?
(booyeh and
put-yew-leh)
Swamp Onion/Garlic
Allium validum

Bošdi?
(bosh-dee)
wild onions

Mege'?eš
(me-gee-ish)
Bracken Fern Root
Pteridium aquilinum





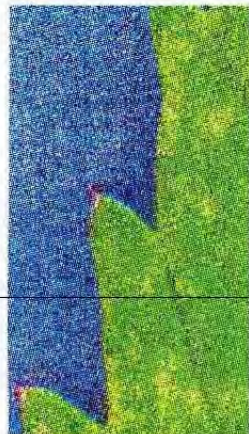
Da'bal
(dah-ball)
Big sage
artemisia tridentata



Balɣac'ɑŋ
(bal-nga-tzang)
Bitterbrush
Purshia tridetata



Dime? de'guš
(deim-eh day-gush)
Water hemlock *Cicuta occidentalis*



Dáhal
(dah-hall)
Sand Seed
mentzelia albicaulis



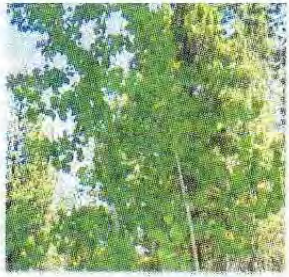
C'e'gelhu
(tzeh-gelhoo)
Wild onion
Cellium parvum



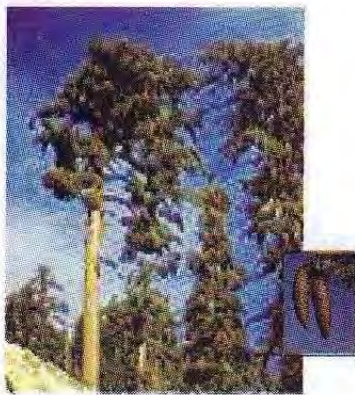
Wašiw baŋkuš
(Washoe bang-kush)
Wild Tobacco
Nicotiana attenuata



?Wa? De? T' i'me?



Behé'ziŋ t'áša? (behezing tzashah)
Aspen *Populus tremuloides*



Simt'a'gim
(Sim-tzah-gum)
Sugar Pine
Pinus lambertiana

Nanómba
sugar from the tree



?Itmaha'wa?
(itmah-ha-wah)
libocedrus decurrens



P'á'l
pb-all
juniper

It Grows Here - Native Plants of the Tahoe Basin



T'á'gim (tz-a-gum)
Piñon tree *Pinus monophylla*
t'á'gim ya'ka? cone
me?cetiŋ baby cone
šala? pitch



Deybu'buyi? (day-boy-buyee)
Ponderosa Pine *Pinus Ponderosa*

Ma'daš dewdi?iš
Jeffery Pine
Pinus jefferii





Dašik
(dah-shook)
locust



Go'c'i
go-tz-ee
yellow jacket



Gé'shu
(geh-shoo)
earthworm



C'i'ki
(tz-oo-koo)
spider



C'i'bel
(tzee-bell)
louse



Gi'giši
(gee-gishee)
flea



Pà?gó?t'umhu
(pa-go-tumhoo)
grasshopper



Pá?lo?lo
(pah-lo-lo)
butterfly



Yagil t'awanj?
(yagil tzawang-eeh)
big black ants



ʔá'ni (awnee) ant
C'óšij?
(tz-oshing-eeh) fire ants
Dasi'ŋ?die? (dahshing-deh) sugar ants



K'awandada
k-aw-an-da-da
desert turtle



Gòwgow
gow-go
Canadian Goose



ím?gi?
(im-geeh)
salmon



K'ik'idi?
k-ek-edeeh
trout



Gòt'a
(go-tah)
frog



Metde't'ili?
met-det-tzileeh
minnow



Babwanhu
babwanhoo
sucker



Cikcikhu
pelican



Dílek
ducks



?át'bi?
(aut-ahbee)
fish



Go'ta? popoli?
tadpoles



?ú?c'ili?
(oo-tsu-leeh)
chipmunk



Basot?
(basot)
red squirrel



paša?
(pah-shah)
wood rat



Pélew
(pell-ew)
jackrabbit



C'áli?
(tzall-eeh)
cottontail



Mik'i?
(moo-kk-eeh)
snowshoe
rabbit



P'úšala?
(pb-uh-shal-ah)
mouse



Pawáwli?
(paw-wow-leeh)
grey squirrel



Tup'ip'iwi?
(to-pip-ee-weeh)
skunk



Bagumdalŋi?
bagoom-dal-ngeh
brown bat



C'imelhel
(tzim-el-hel)
beaver



p'e?wet?c'eli?
(peh-wet-tsel-leh)
weasel



Ditiš
(ditish)
prairie dog



Séwit'
(seh-we-oot)
porcupine



Memdà'wi
demisu'yi?
mule deer



Meyŋa?
mine-g-ah
fawn



Dumše'gìl
(dum-sha-gul)
bobcat



Eyés
eye-es
antelope



Hi'liza
(hill-eeza)
mt. lion



?ogal
ogall
Mt. goat



Memdà'wi da'la?
mother deer or doe
(mem-dewee daa-lah)



Wac'i'ha?
watz-eeha
fox



Gewe
(geh-we)
coyote



Tu'li'ši
toleeshee
wolf



Taba?
(tah-bah)
bear



Mide?
moo-det
grizzly bear



Ma?ki'?
(mah-keeh)
rattlesnake



Mušgulhu
moosh-gul-hoo
water snake

Sì·su damt'a?ŋa?



Pat'álŋi?
pah-tz awng ee
eagle



Má?wi?
mah-weeh
hawk



Hú·šim
hoo-zum
buzzard



Dimim
dim-oom
owl



T'át'at
t-aht-at
magpie



C'ášú?
tz-a-shooh
pinyon jay



Sí·su t'íyeli?
see-su tdee-yel-eeh
meadow lark



C'upum
tz-uh-pum
sage grouse



T'etil
t-etul
California quail



Mawda?mat'
maw-dah-matee
Mountain quail



?á?á
ah-a
crow



Tebe? gumsí·su
tebeh goom-see-soo
sparrow