

Trail Highlights

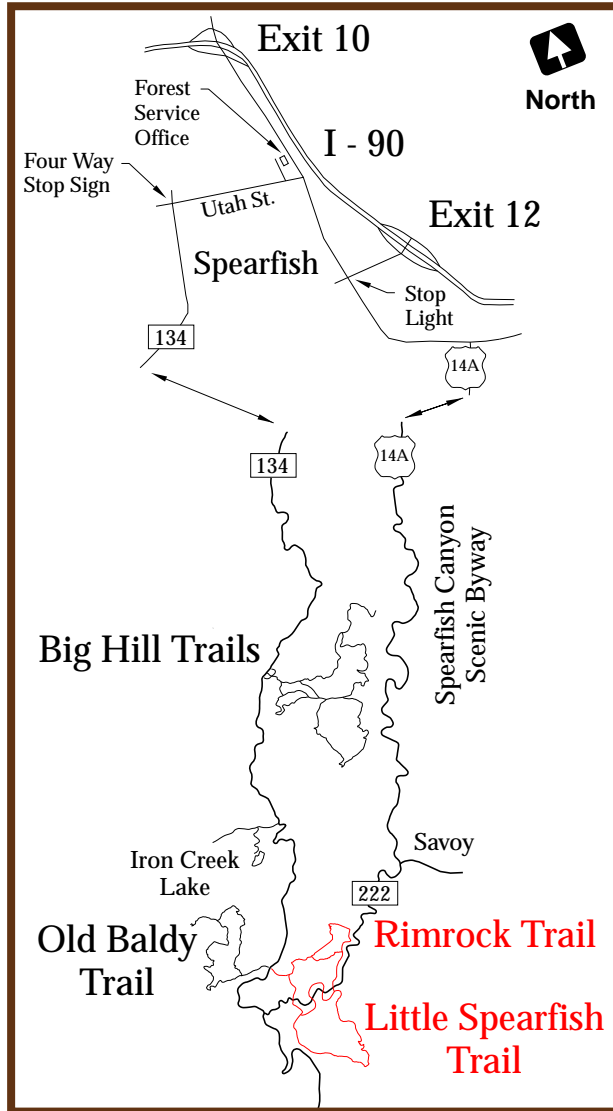
Location Map

General Information



The trail begins at the trailhead but can be accessed at numerous locations apparent on the trail map. Both trails meander through stands of ponderosa pine, quaking aspen, and paper birch. Spectacular views of limestone cliffs are complimented by the ambiance of Little Spearfish Creek.

The foundation of an old ranger station and a root cellar can be seen between Timon Campground and Rod and Gun Campground.



Trail Ethics

Please don't cut across switchbacks or pioneer new trails.



Extreme Weather

Clear sunny days can quickly turn into afternoon thunderstorms. Start hikes early and carry rain gear.



Stream Water

Do not drink it! Each trail user should carry at least one quart of water.



Motors and Machines

This trail is not maintained for the use of motorized vehicle traffic.

M
O
R
E
I
N
F
O
R
M
A
T
I
O
N

➔ Northern Hills Ranger District
2014 North Main Street
Spearfish, SD 57783
(605) 642-4622

➔ Supervisor's Office
1019 North 5th Street
Custer, SD 57730
(605) 673-9200

Little Spearfish and Rimrock Trails

Trail Numbers 80 & 79



Enjoy the National Forest, but please **TREAD LIGHTLY** and **DON'T LITTER**.



Black Hills National Forest



The United States Department of Agriculture (USDA) prohibits discrimination in its programs on the basis of race, color, national origin, gender, religion, age, disability, political beliefs, sexual orientation, and marital or family status. (Not all prohibited bases apply to all programs.) Persons with disabilities who require alternative means for communication of program information (Braille, large print, audiotape, etc.) Should contact USDA's TARGET Center at (202) 720-2600 (voice and TDD).

To file a complaint of program discrimination, write USDA Director, Office of Civil Rights, Room 326-W, Whitten Building, 14th and Independence Avenue, SW, Washington, DC 20250-9410, or call (202) 720-5964 (voice and TDD). USDA is an equal opportunity provider and employer.

Little Spearfish and Rimrock Trails

Easy Moderate

Little Spearfish Trail

Elevation: 4,805 to 6,280 feet

Length: 6.0 mile loop trail

Difficulty: Easy to Moderate

Moderate

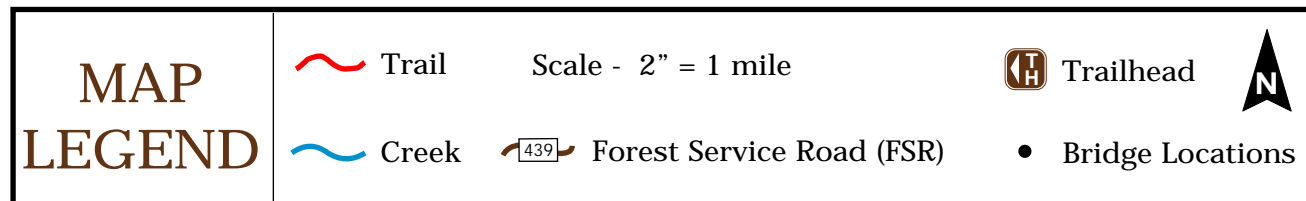
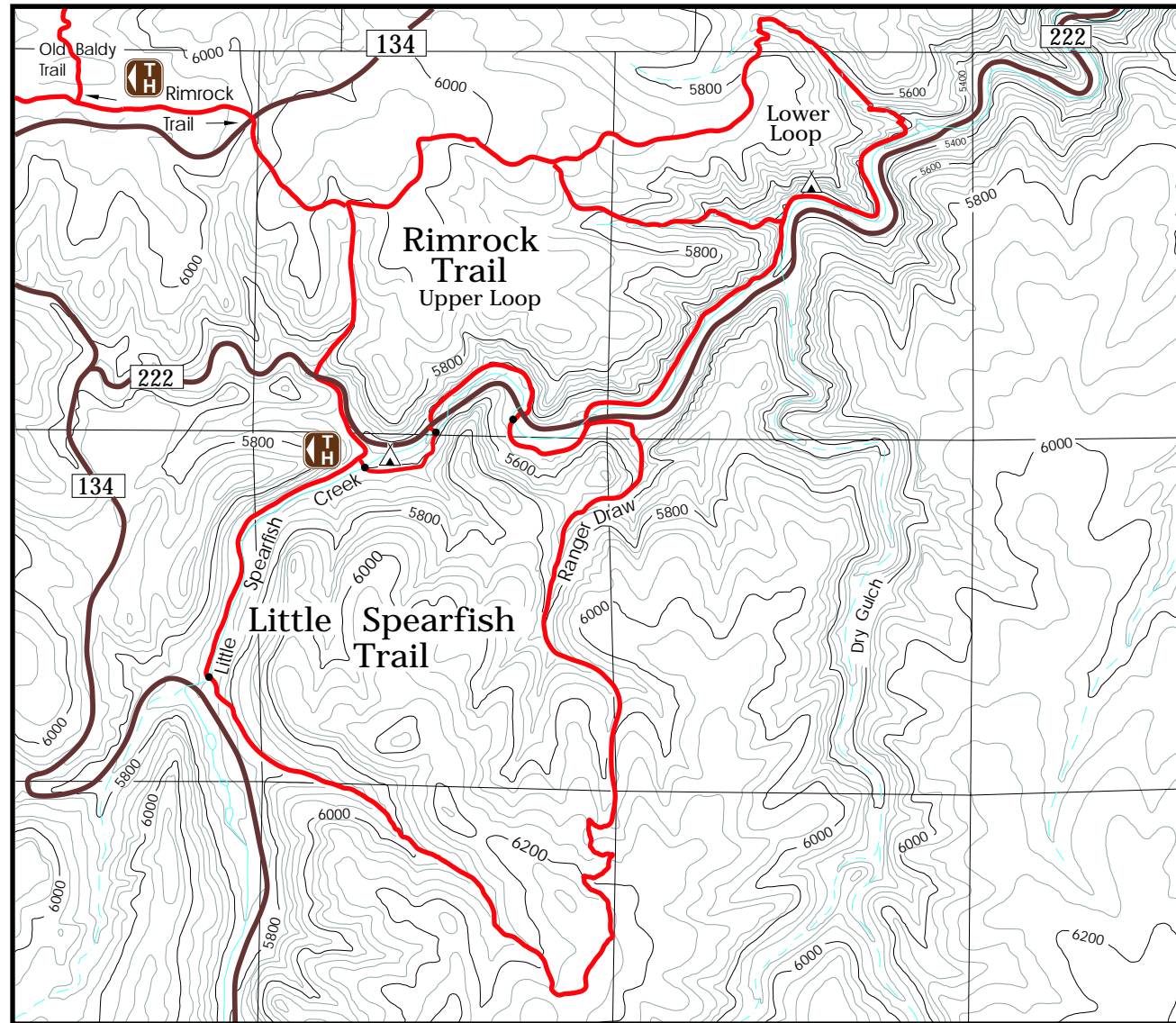
Rimrock Trail

Elevation: 5,320 to 6,040 feet

Length: 4.7 mile upper loop
3.2 mile lower loop
6.3 miles both loops
0.9 mile spur trail to the Old Baldy Trail

Difficulty: Moderate

Location: From Spearfish take Highway 14A to Savoy. Travel west on FSR 222 for approximately 4.7 miles to the trailhead.



American Dipper in Spearfish Creek

Spearfish Creek offers a year round home to the American Dipper. Dippers are small songbirds uniquely adapted to feeding underwater. The common name "dipper" comes from this bird's habit of bending its legs so its entire body moves up and down in a dipping motion. Dippers can dive and propel themselves under the water with swimming motions of their wings. In shallow water, they walk along the bottom of streams by grasping stones with their elongated toes. Dippers feed almost exclusively under water on larval forms of aquatic insects including caddisfly, mayfly and stonefly nymphs.