

Blanco Ranger District
220 E Market Street
Meeker, CO 81641
(970) 878-4039 - Voice
(970) 878-5173 - Fax



United States Department of Agriculture



EAST BEAVER/SLEEPY CAT ROAD #250

Difficulty: Moderate

Trail Use: Moderate (Heavy during hunting season)

Length: 24 miles

Elevation: Starts at 7,073 feet and ends at 7,546 feet (highest point 9,348 feet)

Elevation Gain: +3,201 feet – 2,729 feet = +472 feet

Open To: HIKING, HORSEBACK RIDING, 4-WHEEL DRIVE, ATV, MOTORCYCLES

Access:

- The East Beaver end of the East Beaver/Sleepy Cat Road is located 22.3 miles east of Meeker.
- From Meeker, take State Highway 13 east for 1 mile.
- Where Highway 13 turns north, turn east on Rio Blanco County Road 8 for 19 miles.
- Turn north on Rio Blanco County Road 115 through Oak Ridge State Wildlife Area for 2.3 miles to the forest boundary where FDR 250 begins.
- The Sleepy Cat end of the East Beaver/Sleepy Cat Road is located 16 miles northeast of Meeker.
- From Meeker, take State Highway 13 east for 2.2 miles.
- Turn east on Rio Blanco County Road 15 for 11 miles to the top of Yellow Jacket Pass.
- Turn east on County Road 48 for 2.6 miles to the forest boundary where FDR 250 begins.

Trail Highlights:

The East Beaver/Sleepy Cat Road is used for multiple activities, mostly by 4-wheel drive vehicles and ATVs. When the road is dry, it is passable with a 2-wheel drive vehicle. Timber sales may be in progress along the road so beware of logging vehicles. There are numerous side roads, some of which connect to other roads and some dead end. There are two patches of private property along the road, so please respect private property and do not open these gates.

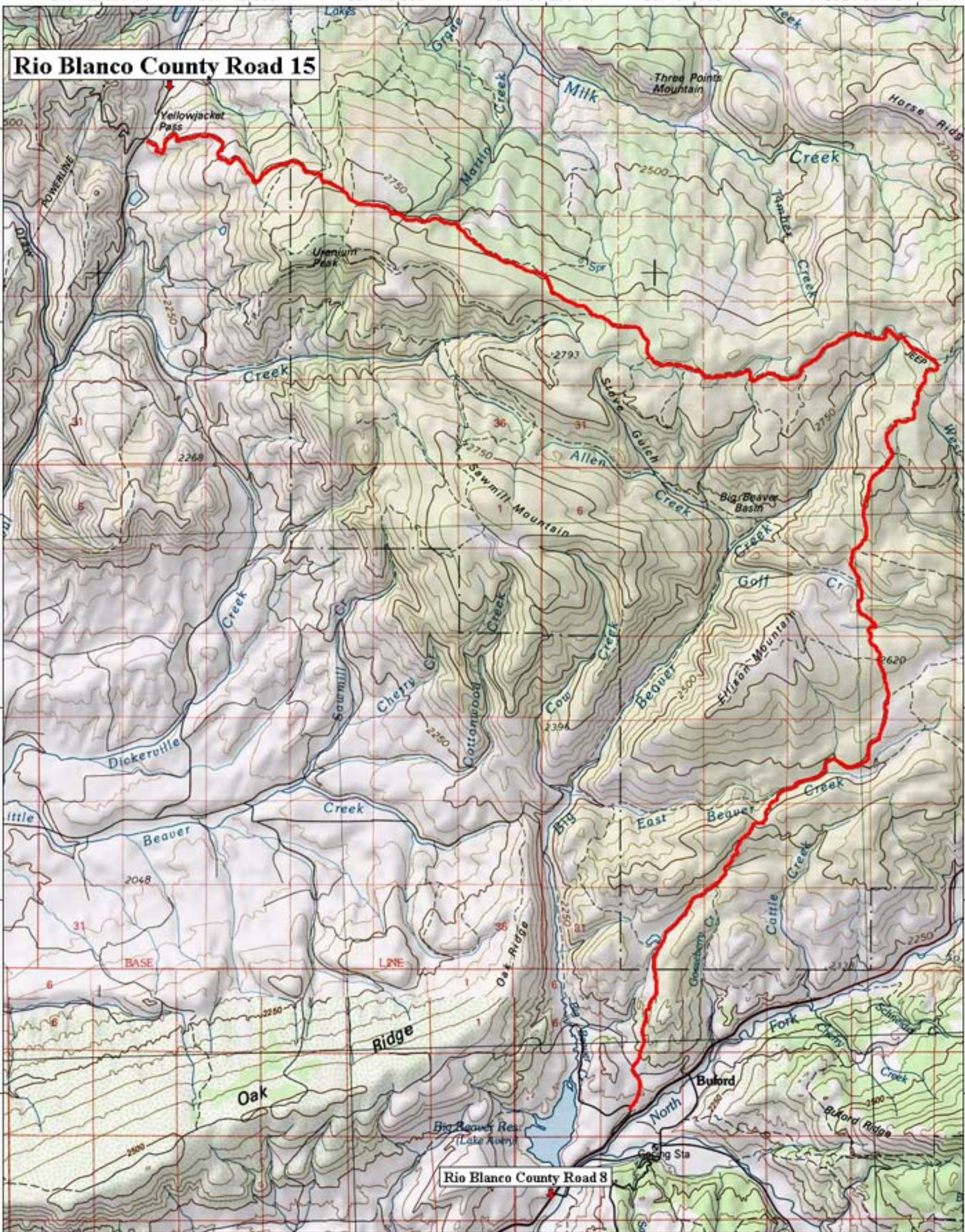
Important Information:

- **THIS TRAIL IS USED FOR MULTIPLE ACTIVITIES INCLUDING HIKING AND HORSEBACK RIDING, 4-WHEEL DRIVE, ATVS AND MOTORCYCLING. PLEASE RESPECT OTHER USERS.**
- **DOMESTIC CATTLE MAY BE GRAZING IN THE AREA.**

THIS MAP IS INTENDED FOR USE AS A GENERAL GUIDE ONLY, NOT FOR ACTUAL LAND NAVIGATION. THE WHITE RIVER NATIONAL FOREST STRONGLY SUGGESTS PURCHASING A TOPOGRAPHIC TRAIL MAP AND COMPASS PRIOR TO BEGINNING AN OFF-HIGHWAY VEHICLE TRIP.

107°45.000' W 107°43.000' W 107°41.000' W 107°39.000' W 107°37.000' W WGS84 107°34.000' W

Rio Blanco County Road 15



40°09.000' N
40°07.000' N
40°05.000' N
40°03.000' N
40°01.000' N
39°59.000' N

40°09.000' N
40°07.000' N
40°05.000' N
40°03.000' N
40°01.000' N
39°59.000' N

107°45.000' W 107°43.000' W 107°41.000' W 107°39.000' W 107°37.000' W WGS84 107°34.000' W

