

Eagle-Holy Cross Ranger District  
24747 US Hwy 24  
P.O. Box 190  
Minturn, CO 81645  
(970) 827-5715  
www.fs.usda.gov/whiteriver



United States Department of Agriculture



---

---

## LOST LAKE TRAIL - FDT 1893

**Length:** 3.73 miles between trailheads

**Difficulty:** Easiest

**Beginning Elevation:** 9,651 ft.

**Elevation Gain:** +808 ft. - 416 ft. = +392 ft.

**Trail Use:** Moderate

**Open To:** Hiking, Biking, Horseback

**Ending Elevation:** 10,043 ft.

**USGS Map(s):** Vail West

**Access from Vail:** From I-70 take Exit 176 for Vail and head west on the North Frontage Road. Turn right on Red Sandstone Road. This road will turn into a dirt road (Red Sandstone Road - FSR 700). Follow this for about for 2.7 miles to the junction of FSR 700 and Lost Lake Road (FSR 786).

- WEST TRAILHEAD - continue straight up FSR 700 for 3.9 miles to the trailhead parking on the right.
- EAST TRAILHEAD - Turn right onto Lost Lake Road - FSR 786. Follow this very rough 4WD road to the trailhead taking a left turn at each fork.

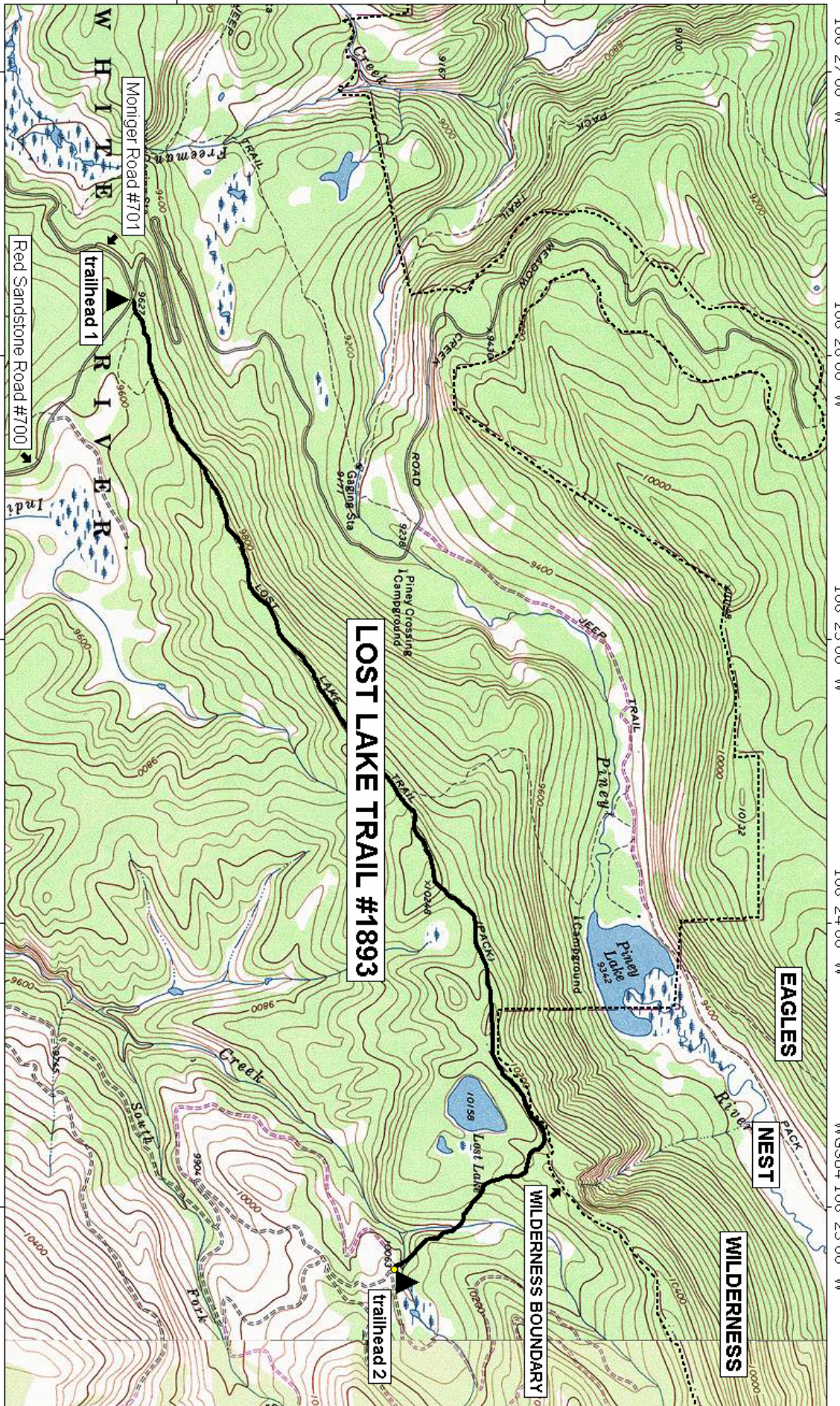
**Trail Highlights:** From the west trailhead, the trail follows a ridge dividing the Piney and Red Sandstone drainages while traveling through lodgepole pine and aspen groves. Where the trail forks to the left to Piney Lake, go straight. The trail to Piney Lake is not open to bikes. The trail gradually climbs 600 feet to the trail's high point then drops slightly to Lost Lake. Continue 0.75 mile on the trail to reach the east trailhead. This portion of the trail passes through forest and meadows and crosses Red Sandstone Creek.

**Important Information:** Due to the relative ease of this trail, it gets heavy use from hikers, mountain bikers, and horseback riders. Please remember to pack out what you pack in. If camping in this area, use low impact camping techniques and camp at least 200 feet from the lake and trail.

This trail passes through an area that was logged in 1987-88. This demonstrates that National Forest land is used for a large variety of activities and resources.

**PACK IT IN - PACK IT OUT!! LEAVE NO TRACE!!**

**This map is intended for use as a general guide only, not for actual land navigation. The White River National Forest strongly suggests purchasing a topographic map and compass prior to your hiking trip.**



106°27'00" W 106°26'00" W 106°25'00" W 106°24'00" W WGS84 106°23'00" W

HOLY CROSS RANGER DISTRICT WHITE RIVER NATIONAL FOREST

39°42'00" N 39°43'00" N

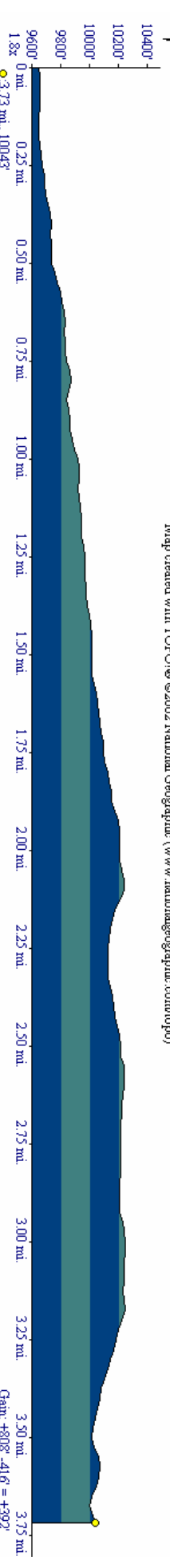
39°42'00" N 39°43'00" N

106°27'00" W 106°26'00" W

106°25'00" W 106°24'00" W

WGS84 106°23'00" W

Map created with [TOPO!](http://topo!/) ©2002 National Geographic (www.nationalgeographic.com/topo)



Gain: +808' -416' = +392'