

Eagle-Holy Cross Ranger District
24747 US Hwy 24
P.O. Box 190
Minturn, CO 81645
(970) 827- 5715
www.fs.usda.gov/whiteriver



United States Department of Agriculture



HIKING

MOUNT OF THE HOLY CROSS TRAIL - FDT 2009

Length: 5.1 miles (one way)

Difficulty: Most Difficult

Beginning Elevation: 10,360 ft.

Elevation Gain: +4,619 ft. - 974 ft. = +3,645 ft.

Trail Use: Very High

Open To: Hiking

Ending Elevation: 14,005 ft.

USGS Map(s): Minturn, Mt. of the Holy Cross

Overnight Registration Information: Each party **camping overnight** in the Holy Cross Wilderness is **required to self-register at the trailhead and to carry a copy of the registration with them** during their visit. There is no fee charged and no limit to the number of registration forms issued. Additionally, camping within the East Cross Creek drainage along the Mount of the Holy Cross trail is only permitted in 10 designated campsites. Camping information is available at the trailhead.

Access from Vail: Take Exit 171 from I-70 for Minturn and Hwy. 24. Turn right onto Hwy 24. From the Ranger Station, proceed south about 4.6 miles, passing through Minturn, to Tigiwon Road #707. Turn right onto Tigiwon Road and continue to the end – 8.4 miles of rough dirt road. Park at the parking area at the end of the road.

Parking is very limited at this trailhead, especially on weekends. Please do not block the road.

Trail Highlights: From the parking area, the trail is a moderately steep climb to Halfmoon Pass, passing through spruce-fir stands the first mile then climbing above timberline to the pass. On the west side of Halfmoon Pass, the trail descends, with some steep sections, to East Cross Creek. After ascending again toward treeline, look for the large rock cairns marking the trail along the ridge above treeline. Do not follow small user-created cairns as these are often misleading.

Comments: From the top of Halfmoon Pass, views to the west are of the Sawatch Range and the Mt. of the Holy Cross ridge. To the northeast are views of the Gore Range and to the southeast lies the Mosquito Range. For those climbing to the top of Mt. of the Holy Cross, be aware that many experienced hikers have gotten disoriented and lost on the way back down; topographic map and compass are strongly recommended. Due to the long distances hiking on talus, the Forest Service recommends that users not bring dogs on this trail.

****THIS AREA GETS VERY HEAVY USE, ESPECIALLY ON WEEKENDS. PLEASE USE "LEAVE NO TRACE" CAMPING AND HIKING ETIQUETTE WHEN TRAVELING ON AND AROUND THIS OVERUSED TRAIL. FIRES ARE PROHIBITED ALONG THIS TRAIL AND ALONG EAST CROSS CREEK.**

Important Information: Mount of the Holy Cross is within the **Holy Cross Wilderness**. Wilderness is for your use and enjoyment, but you have an obligation to leave it unimpaired for future generations. Please understand your responsibilities when visiting these special places, and try to leave no trace of your visit. A few of the Holy Cross Wilderness regulations include:

- * Camp - at least 100 feet from streams, lakes, and trails. Camping near East Cross Creek, as shown on the attached map, is only allowed in designated sites. Camping prohibited in Notch Mtn shelter.
- * Dogs - must be under control and must not harass wildlife, people, or damage property.
- * Fire - **FIRES ARE PROHIBITED ALONG THIS TRAIL AND IN THE EAST CROSS CREEK DRAINAGE.**
- * Group size - limit group size to 15 people.
- * Sanitation - pack out or bury human waste at least 100 feet from water and 6 inches in the soil.

PACK IT IN - PACK IT OUT!! LEAVE NO TRACE!!

This map is intended for use as a general guide only, not for actual land navigation. The White River National Forest strongly suggests purchasing a topographic map and compass prior to your hiking trip.

106°29.000' W

106°28.000' W

106°27.000' W

WGS84 106°26.000' W

39°30.000' N

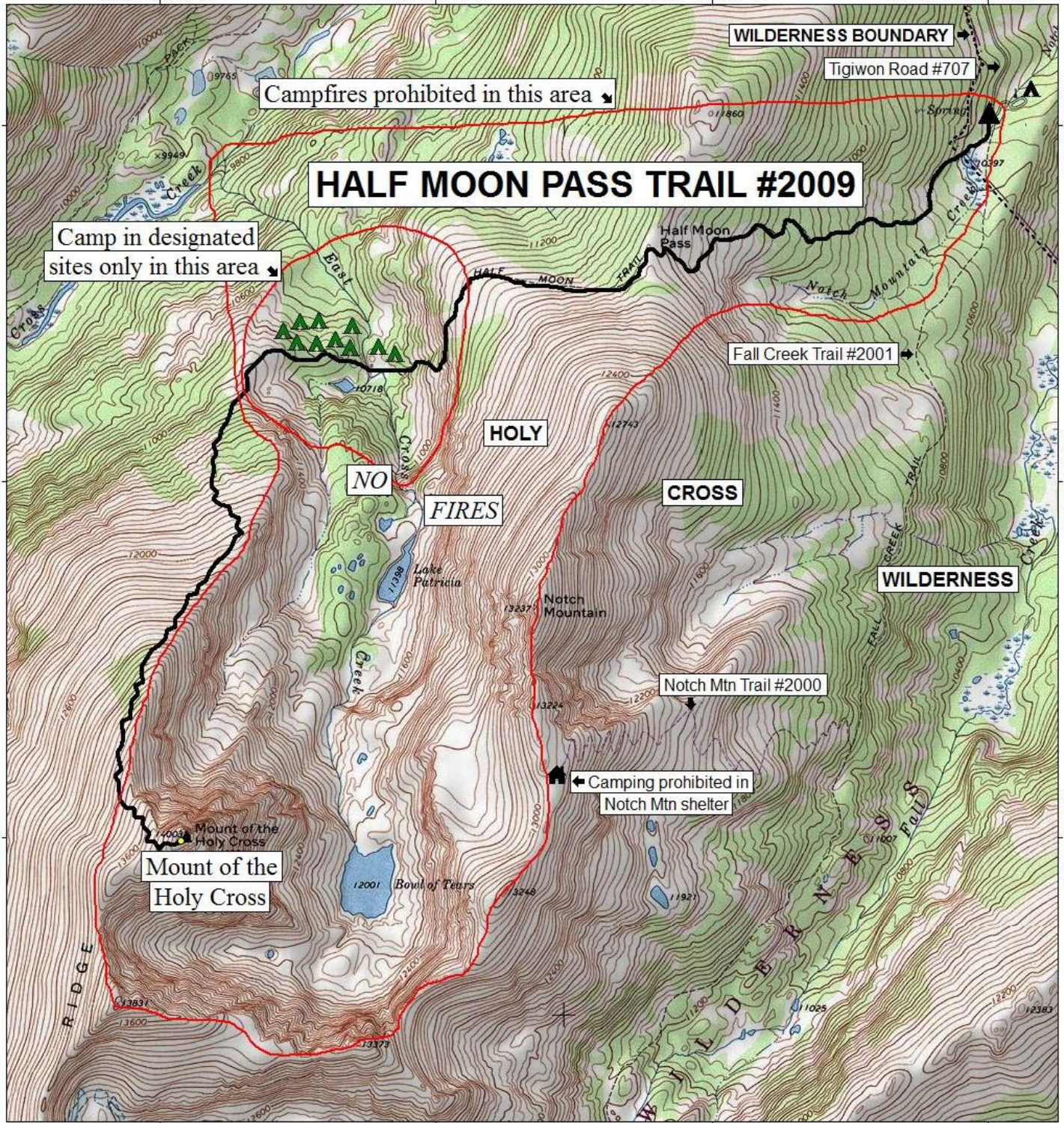
39°30.000' N

39°29.000' N

39°29.000' N

39°28.000' N

39°28.000' N



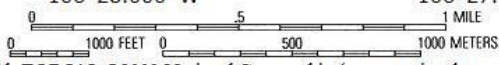
106°29.000' W

106°28.000' W

106°27.000' W

WGS84 106°26.000' W

TN MN 10°



Map created with TOPO!® ©2003 National Geographic (www.nationalgeographic.com/topo)

