

ORDER

WINTER CLOSURE TO DOGS

SOPRIS RANGER DISTRICT
WHITE RIVER NATIONAL FOREST

Pursuant to Title 36 CFR 261.50, the following regulation is established within the boundaries of the White River National Forest, in the State of Colorado, effective November 15 through May 1, annually.

The following closure applies in that area of the Sopris Ranger District, White River National Forest, as shown on the attached map.


Possessing or transporting a dog, except for guide dogs accompanying a blind person, within the Avalanche Creek drainage as specified on the accompanying map, is prohibited from November 15 until May 1. 36 CFR 261.58(s).

This closure is to protect wintering big game which focus upon winter ranges in the Avalanche Creek drainage from harassment by dogs.

Pursuant to 36 CFR, Section 261.50(e), the following persons are exempt from this order:

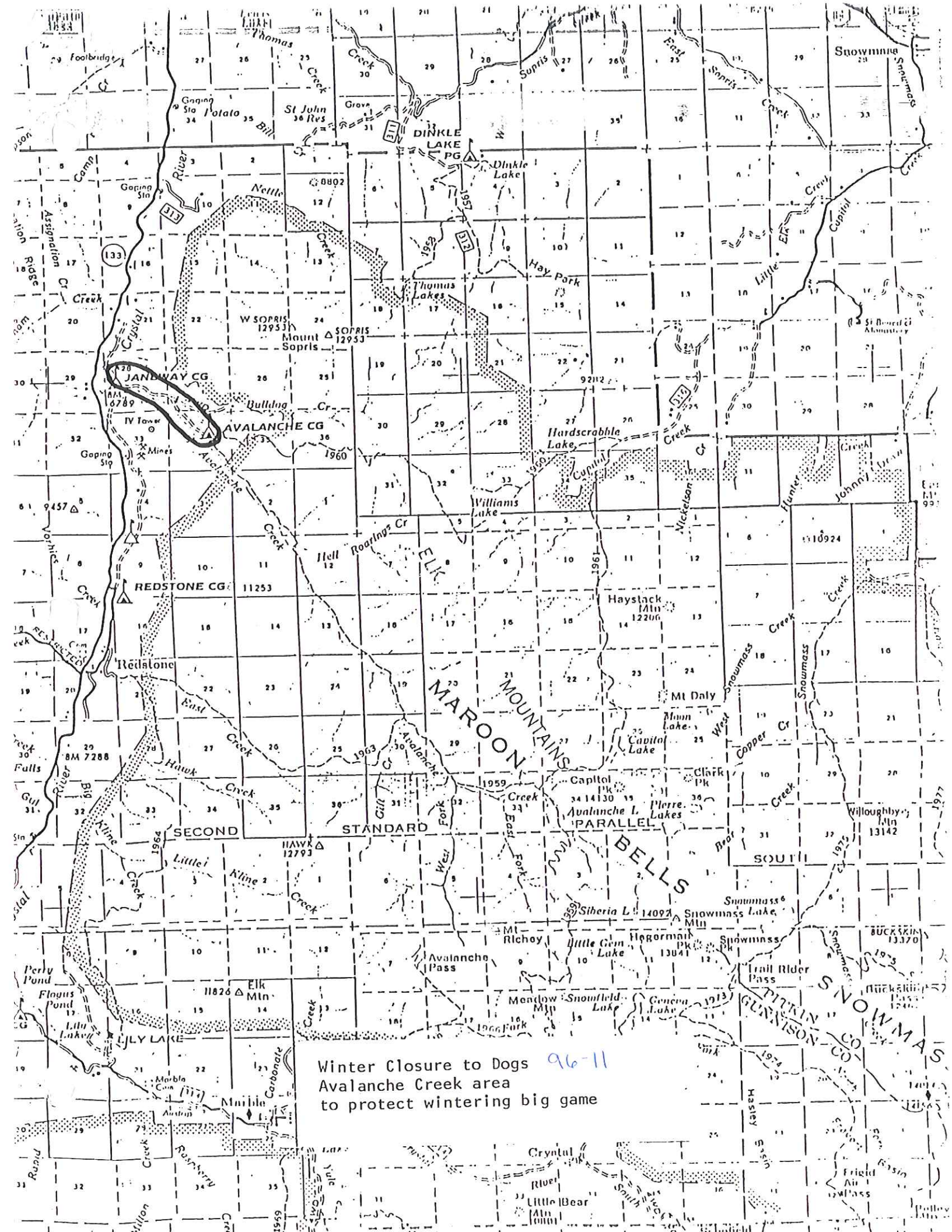
- (1) Persons with a permit specifically authorizing the otherwise prohibited act.
- (2) Any Federal, State, or local officer, or member of an organized rescue or firefighting force in the performance of an official duty.

DONE at Glenwood Springs, Colorado, this 31st day of October, 1996.



VETO J. LASALLE
Forest Supervisor

Violations of these prohibitions are punishable by a fine of not more than \$5,000.00 or imprisonment for not more than six (6) months, or both. Title 16, USC 551.



Winter Closure to Dogs 96-11
Avalanche Creek area
to protect wintering big game