

ORDER

OCCUPANCY AND USE RESTRICTIONS
WHITE RIVER NATIONAL FOREST
RIFLE RANGER DISTRICT

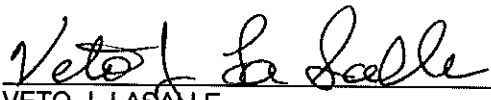
Pursuant to 36 CFR, Sec. 261.50(a) and (b), the following acts are prohibited within the boundaries of the Rifle Ranger District, White River National Forest, until further notice.

1. Being within 100 feet of Cayton Guard Station with pack or saddle stock as specified on the attached map, 36 CFR 261.53(c).
2. Camping in the locations specified on the attached maps except in developed campgrounds and designated camping locations, 36 CFR 261.58(e).
3. Building, maintaining, attending, or using a fire outside of a metal firering, stove, grill, or fireplace provided by the Forest Service (except self-contained personal stoves) in the areas specified on the attached maps (36 CFR 261.52(a)).

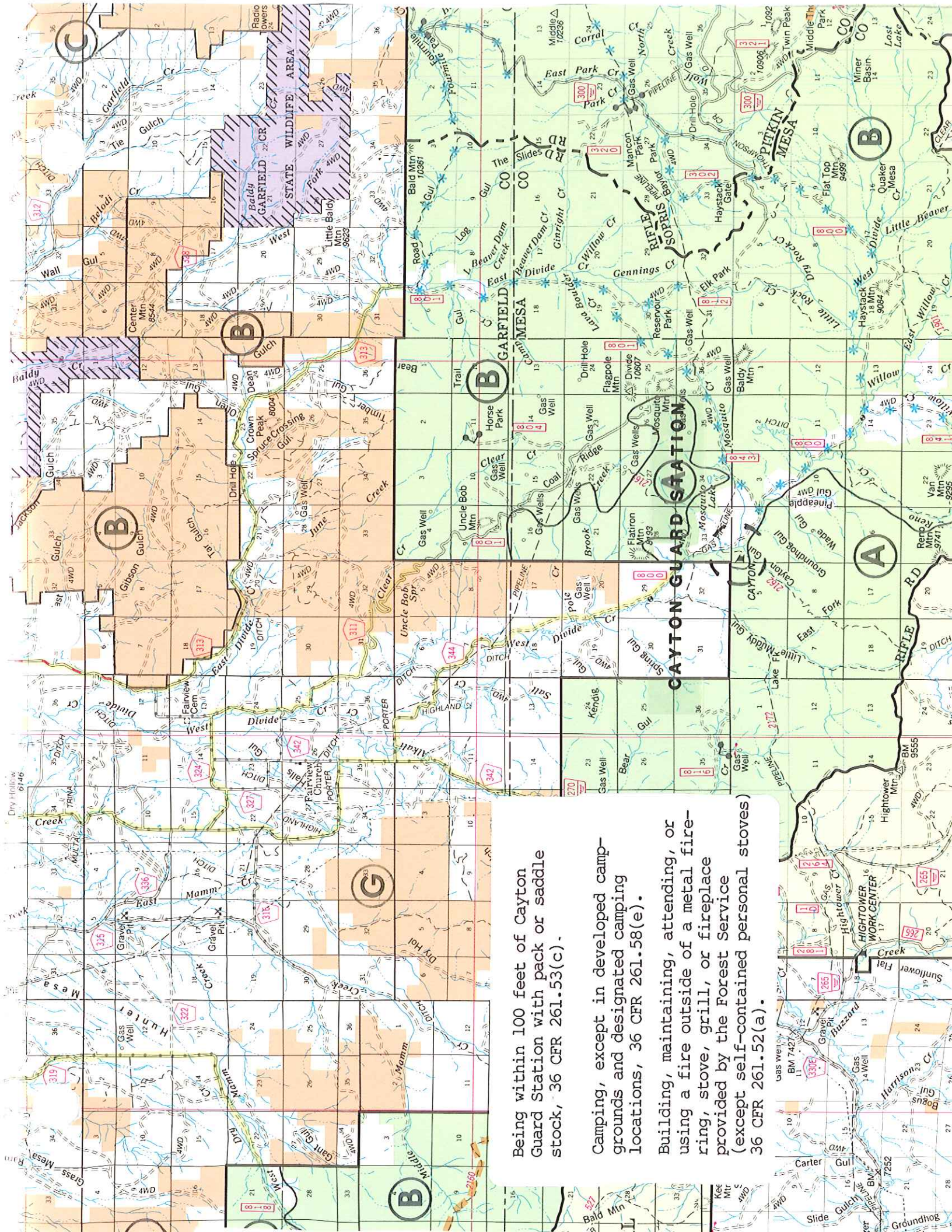
The following persons are exempt from the prohibition contained in this order, 36 CFR 261.50(e).

1. Persons with a permit specifically authorizing the otherwise prohibited act or omission.
2. Any federal, state, or local officer, or member of an organized rescue or fire fighting force in the performance of an official duty.

DONE at Glenwood Springs, Colorado this 23rd day of June, 1993.


VETO J. LASALLE
Forest Supervisor

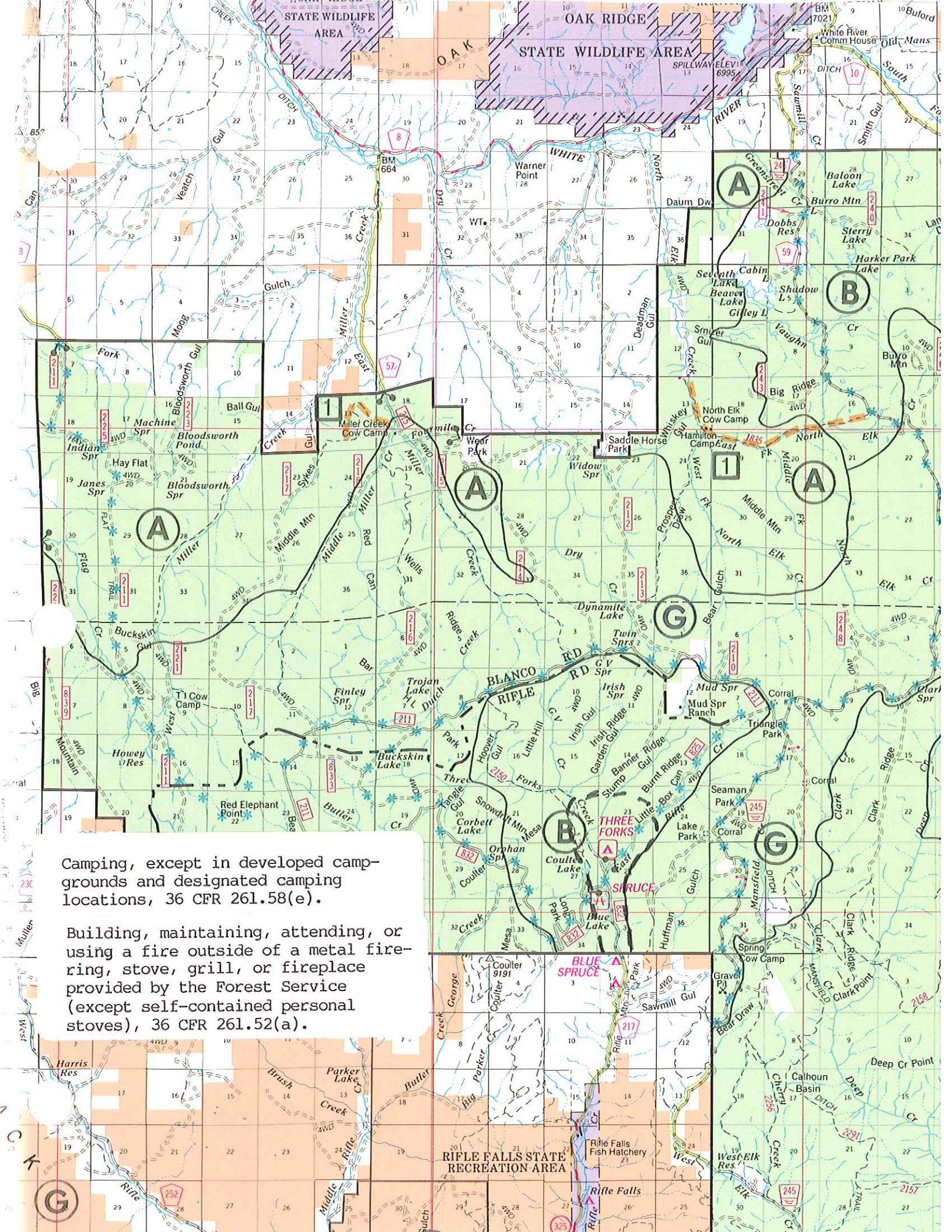
Violations of these prohibitions are punishable by a fine of not more than \$5000 or imprisonment for not more than six (6) months or both . 16 USC 551



Being within 100 feet of Cayton Guard Station with pack or saddle stock, 36 CFR 261.53(c).

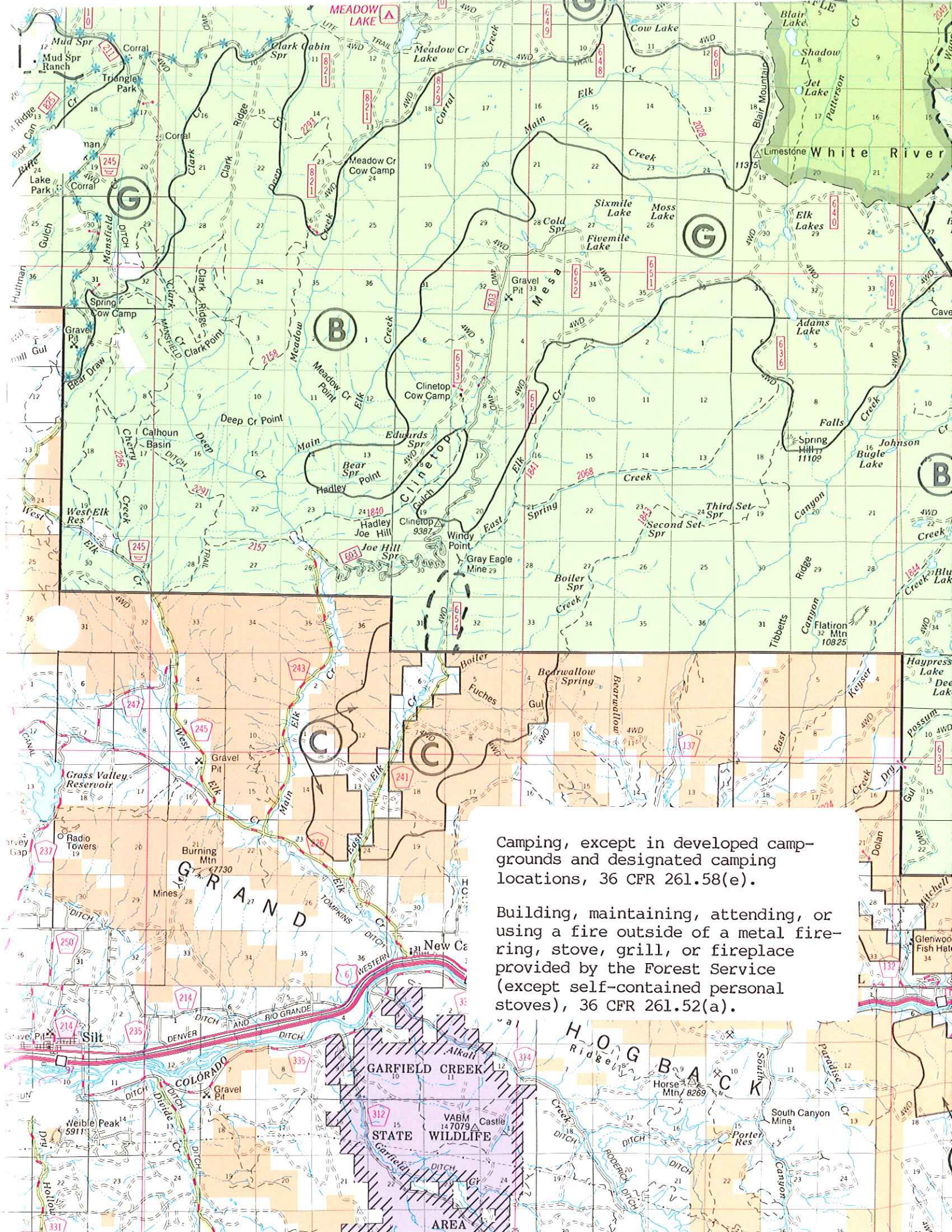
Camping, except in developed camp-grounds and designated camping locations, 36 CFR 261.58(e).

Building, maintaining, attending, or using a fire outside of a metal fire-ring, stove, grill, or fireplace provided by the Forest Service (except self-contained personal stoves) 36 CFR 261.52(a).



Camping, except in developed camp-grounds and designated camping locations, 36 CFR 261.58(e).

Building, maintaining, attending, or using a fire outside of a metal fire-ring, stove, grill, or fireplace provided by the Forest Service (except self-contained personal stoves), 36 CFR 261.52(a).



Camping, except in developed camp-grounds and designated camping locations, 36 CFR 261.58(e).

Building, maintaining, attending, or using a fire outside of a metal fire-ring, stove, grill, or fireplace provided by the Forest Service (except self-contained personal stoves), 36 CFR 261.52(a).