

ORDER

USE OF VEHICLES OFF FOREST DEVELOPMENT ROADS

WHITE RIVER NATIONAL FOREST

Pursuant to 36 CFR Sec. 261.50(a) and (b), the following acts are prohibited in the areas described in this order within the White River National Forest, until further notice:

- (1) Use of any type of motorized vehicle, other than over-snow vehicles in the areas as described below. 36 CFR Sec. 261.54(a).

Pursuant to 36 CFR Sec. 261.50(e), the following persons are exempt from this order:

- (1) Persons with a permit specifically authorized the prohibited act or omission.
- (2) Any Federal, State or local officer, or member of an organized rescue of fire fighting force in the performance of an official duty.

The following are the descriptions of the areas affected by this order.

(A) BAR HL AREA

This area closure includes an area south of FDR 211 in T3S, R91W and T3S, R92W. The area borders the north side of the previous closure area, as shown on Map A attached.

(B) CLARK RIDGE AREA

This area closure includes an extension of the previous closure area on Clark Ridge, northward to FDR 244, as shown on Map B attached.

(C) DEEP CREEK POINT

This area closure includes the area known as Deep Creek Point and extends from the existing road closure on FDR 821 (Sec 26, T3S, R91W) southward to include all portions of Deep Creek Point within the confines of the rimrocks on Deep Creek Point, as shown on Map C attached.

(D) MAIN ELK CREEK AREA

This area is an extension of the existing Main Elk Creek Area closure. It is bordered on the west side by FDR 821; on the north side by FDR 829, FDR 648, and FDR 601; on the east side by FDR 601, and on the south by a line which runs east-west from the upper south rim of Ute Creek to the rim of Patterson Creek, as shown on Map D attached.

(E) EAST ELK AREA

This area includes the mesa between Spring Creek and East Elk Creek. Generally, the area is bound on the east by FDR 636, and on the north by FDR 651. On the south and west it is bordered by the previously defined closure in Spring Creek and East Elk Creek, as shown on Map E attached.

Done at Glenwood Springs, Colorado, this 9th
day of October, 1991.



THOMAS A. HOOTS
Forest Supervisor
White River National Forest

Violation of this prohibition is punishable by a fine of not more than \$5,000.00 or imprisonment for not more than six (6) months or both.

Title 16 USC, Section 551

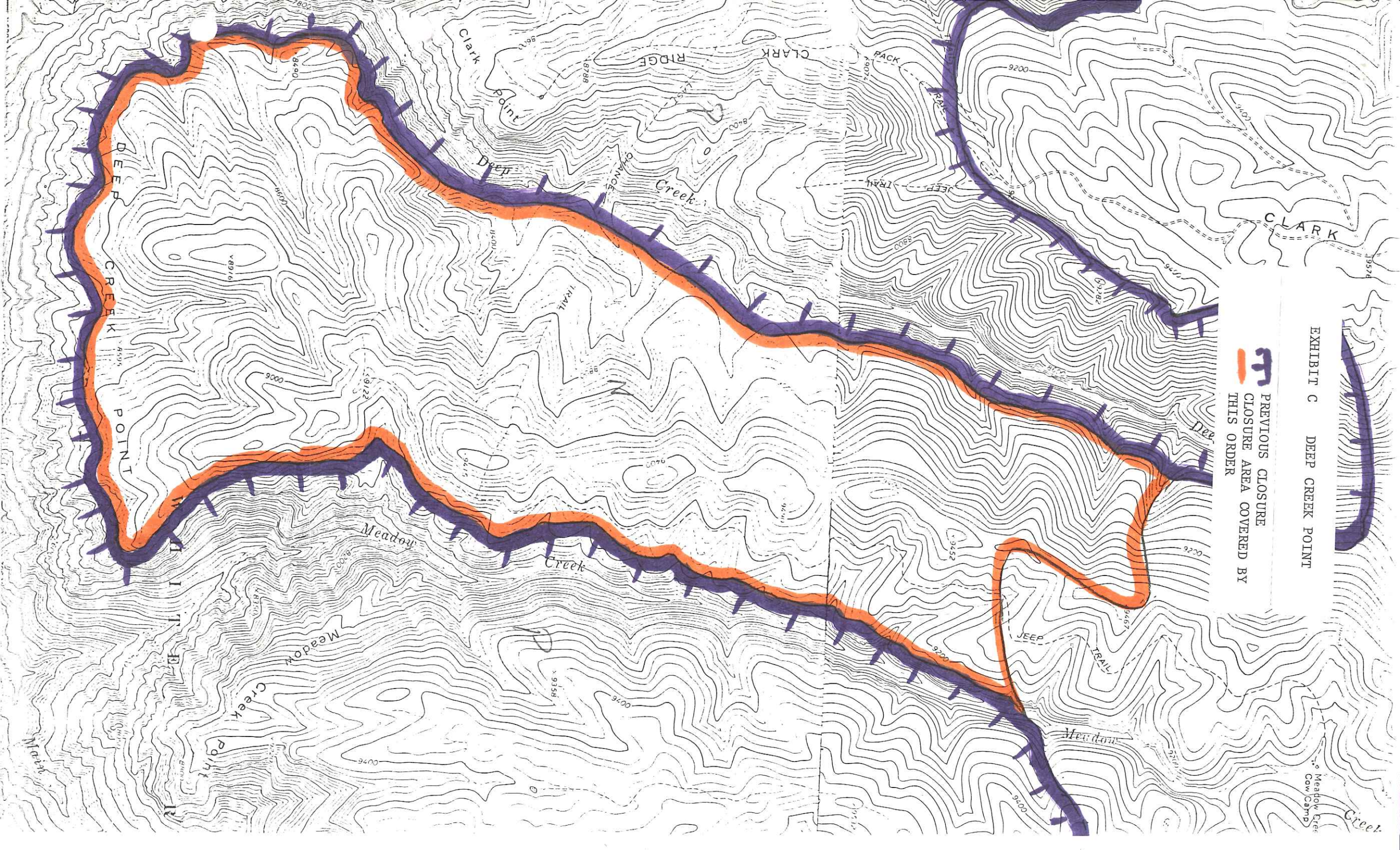

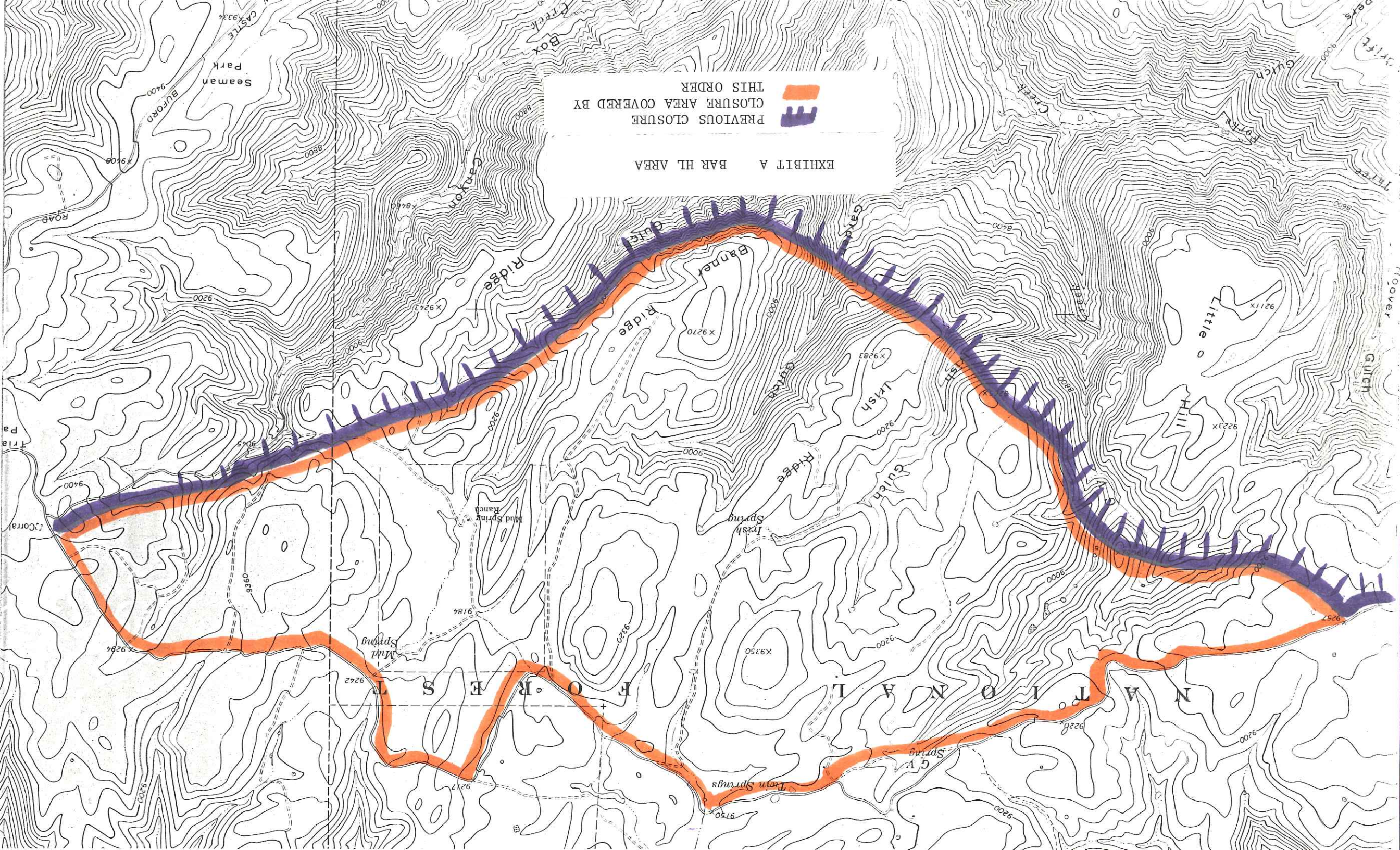


EXHIBIT C DEEP CREEK POINT

 PREVIOUS CLOSURE
CLOSURE AREA COVERED BY
THIS ORDER

Meadow Creek
Cow Camp



THIS ORDER
PREVIOUS CLOSURE
CLOSURE AREA COVERED BY



EXHIBIT A
BAR HL AREA

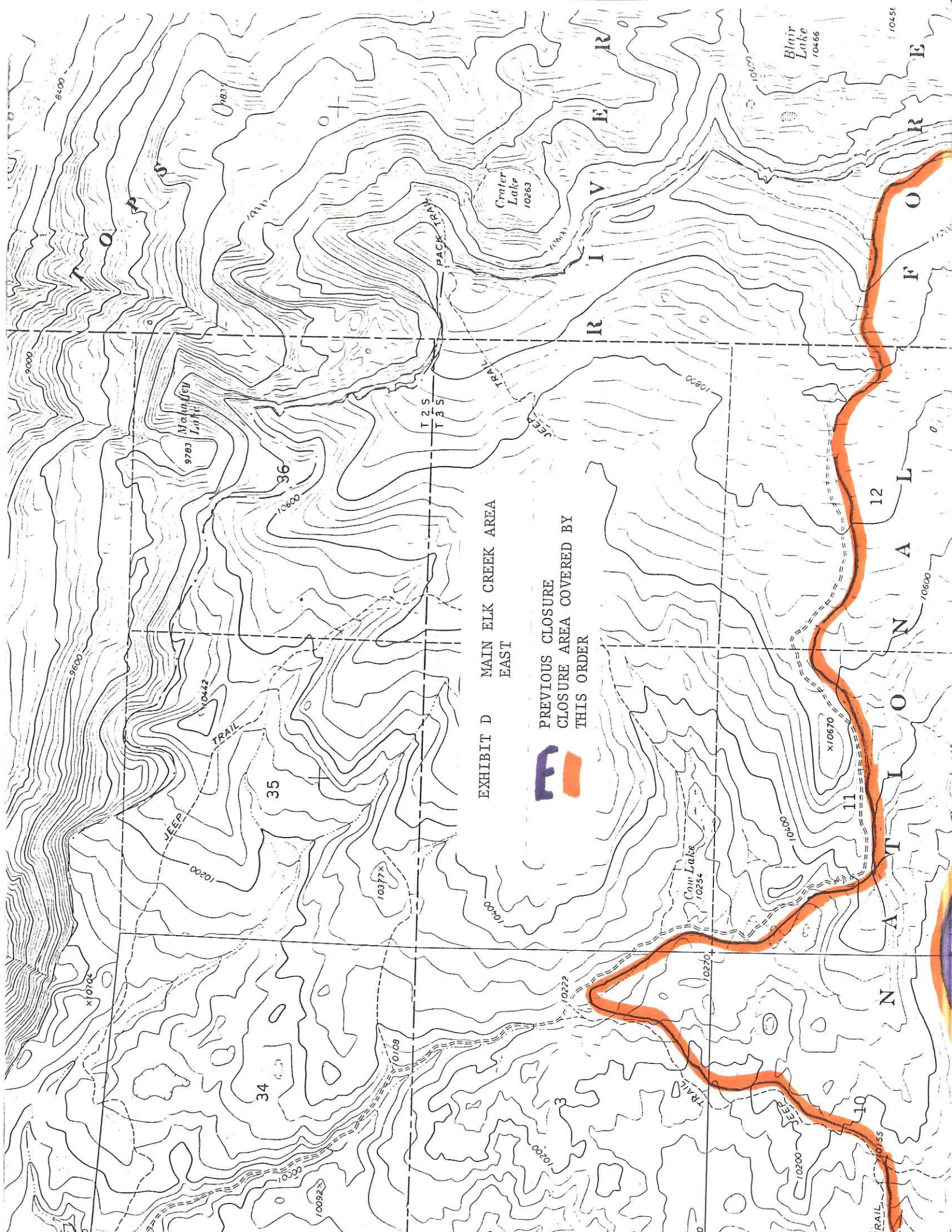


EXHIBIT D MAIN ELK CREEK AREA EAST



PREVIOUS CLOSURE
CLOSURE AREA COVERED BY
THIS ORDER

Blair Lake
10466

Crater Lake
10263

Coin Lake
10254

10451

34

35

36

3

40

11

12

L

A

N

O

A

T

L

N

R

A

R

T 2 S
T 3 S

R 10 E
R 11 E

O
P
S

V
E
R

E

R

F

O

R

L

A

N

O

A

T

L

N

R

A

R

TRAIL

TRAIL

PACK

TRAIL

TRAIL

TRAIL

TRAIL

TRAIL

TRAIL

TRAIL

TRAIL

TRAIL

TRAIL

TRAIL

TRAIL

TRAIL

TRAIL

TRAIL

TRAIL

TRAIL

TRAIL

TRAIL

TRAIL

TRAIL

TRAIL

TRAIL

TRAIL

TRAIL

TRAIL

TRAIL

TRAIL

JEEP

JEEP

JEEP

JEEP

JEEP

JEEP

JEEP

JEEP

JEEP

JEEP

JEEP

JEEP

PACK

TRAIL

TRAIL

TRAIL

TRAIL

TRAIL

TRAIL

TRAIL

TRAIL

TRAIL

TRAIL

TRAIL

TRAIL

TRAIL

TRAIL

TRAIL

TRAIL

TRAIL

TRAIL

TRAIL

TRAIL

TRAIL

TRAIL

TRAIL

TRAIL

TRAIL

TRAIL

TRAIL

TRAIL

JEEP

JEEP

JEEP

JEEP

JEEP

JEEP

JEEP

JEEP

JEEP

JEEP

JEEP

JEEP

PACK

TRAIL

TRAIL

TRAIL

TRAIL

TRAIL

TRAIL

TRAIL

TRAIL

TRAIL

TRAIL

TRAIL

TRAIL

TRAIL

TRAIL

TRAIL

TRAIL

TRAIL

TRAIL

TRAIL

TRAIL

TRAIL

TRAIL

TRAIL

TRAIL

TRAIL

TRAIL

TRAIL

TRAIL

JEEP

JEEP

JEEP

JEEP

JEEP

JEEP

JEEP

JEEP

JEEP

JEEP

JEEP

JEEP

PACK

TRAIL

TRAIL

TRAIL

TRAIL

TRAIL

TRAIL

TRAIL

TRAIL

TRAIL

TRAIL

TRAIL

TRAIL

TRAIL

TRAIL

TRAIL

TRAIL

TRAIL

TRAIL

TRAIL

TRAIL

TRAIL

TRAIL

TRAIL

TRAIL

TRAIL

TRAIL

TRAIL

TRAIL

JEEP

JEEP

JEEP

JEEP

JEEP

JEEP

JEEP

JEEP

JEEP

JEEP

JEEP

JEEP

PACK

TRAIL

TRAIL

TRAIL

TRAIL

TRAIL

TRAIL

TRAIL

TRAIL

TRAIL

TRAIL

TRAIL

TRAIL

TRAIL

TRAIL

TRAIL

TRAIL

TRAIL

TRAIL

TRAIL

TRAIL

TRAIL

TRAIL

TRAIL

TRAIL

TRAIL

TRAIL

TRAIL

TRAIL

JEEP

JEEP

JEEP

JEEP

JEEP

JEEP

JEEP

JEEP

JEEP

JEEP

JEEP

JEEP

PACK

TRAIL

TRAIL

TRAIL

TRAIL

TRAIL

TRAIL

TRAIL

TRAIL

TRAIL

TRAIL

TRAIL

TRAIL

TRAIL

TRAIL

TRAIL

TRAIL

TRAIL

TRAIL

TRAIL

TRAIL

TRAIL

TRAIL

TRAIL

TRAIL

TRAIL

TRAIL

TRAIL

TRAIL

JEEP

JEEP

JEEP

JEEP

JEEP

JEEP

JEEP

JEEP

JEEP

JEEP

JEEP

JEEP

PACK

TRAIL

TRAIL

TRAIL

TRAIL

TRAIL

TRAIL

TRAIL

TRAIL

TRAIL

TRAIL

TRAIL

TRAIL

TRAIL

TRAIL

TRAIL

TRAIL

TRAIL

TRAIL

TRAIL

TRAIL

TRAIL

TRAIL

TRAIL

TRAIL

TRAIL

TRAIL

TRAIL

TRAIL

JEEP

JEEP

JEEP

JEEP

JEEP

JEEP

JEEP

JEEP

JEEP

JEEP

JEEP

JEEP

PACK

TRAIL

TRAIL

TRAIL

TRAIL

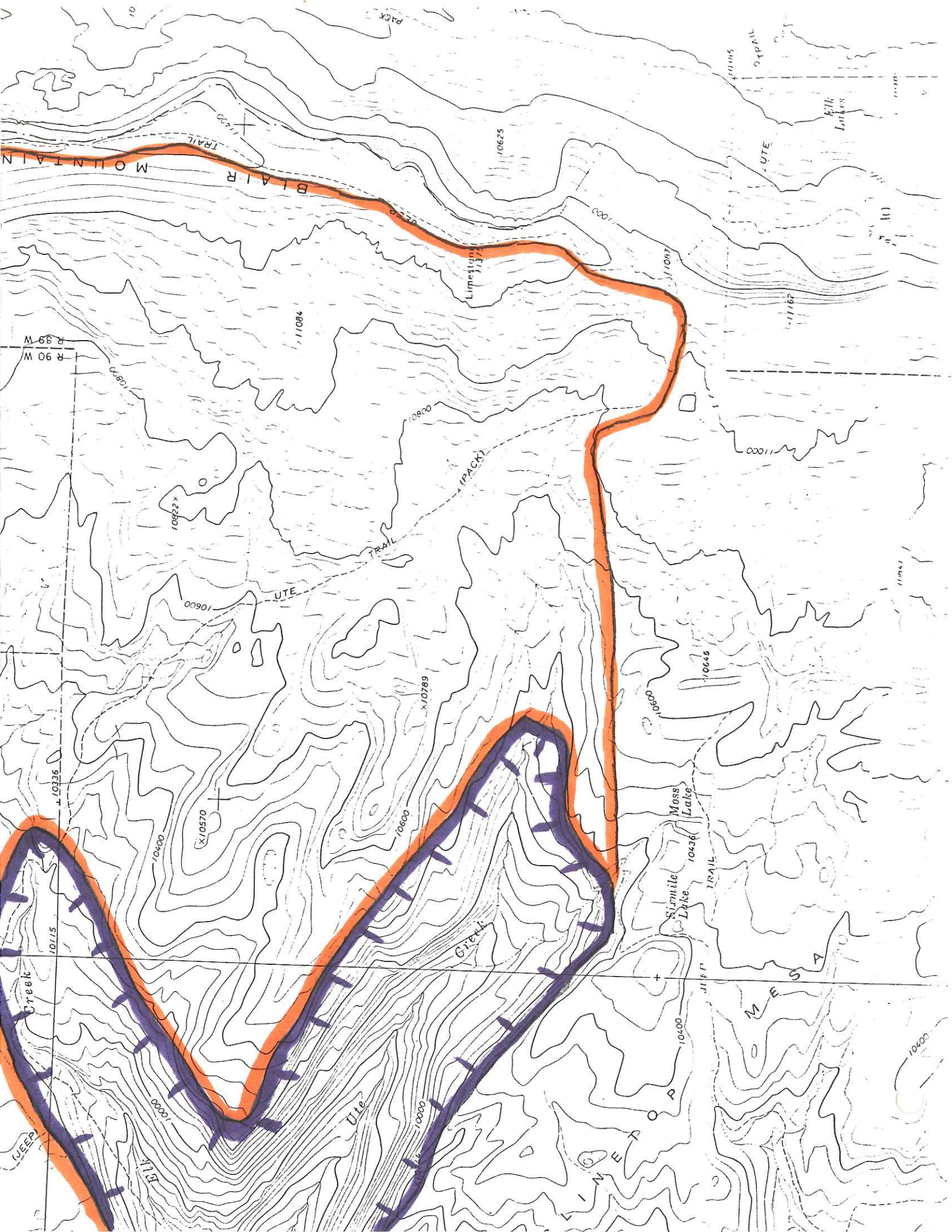
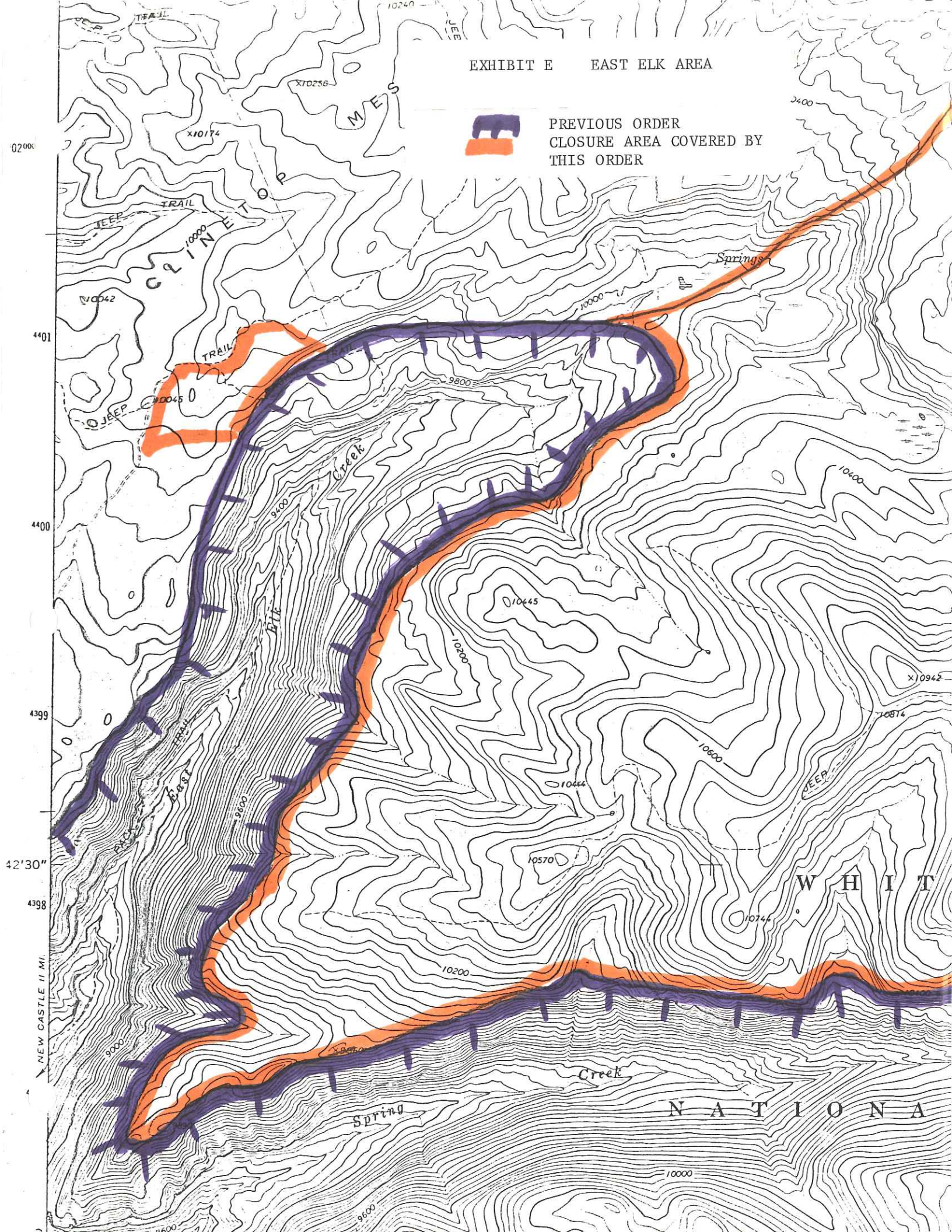


EXHIBIT E EAST ELK AREA



PREVIOUS ORDER
CLOSURE AREA COVERED BY
THIS ORDER



02'00"

44'01"

44'00"

43'59"

42'30"

43'58"

NEW CASTLE II MI.

3400

10042

CSPINE TOP

TRAIL

TRAIL

TRAIL

TRAIL

TRAIL

TRAIL

TRAIL

TRAIL

TRAIL

TRAIL

x10258

x10174

x10045

10240

Springs

East Creek

10445

10444

10570

10744

x10942

10874

10200

x9950

Creek

Spring

NATIONAL WHITE

10000

16000

9600

9800

10000

10400

9000

16000

9600

