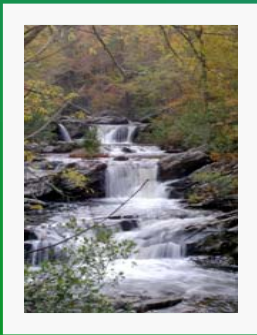
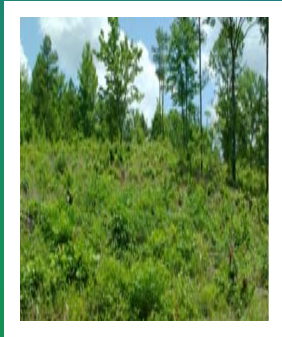
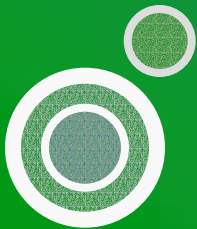


BANKHEAD NATIONAL FOREST FOREST HEALTH AND RESTORATION PROJECT

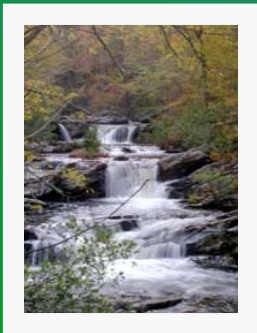
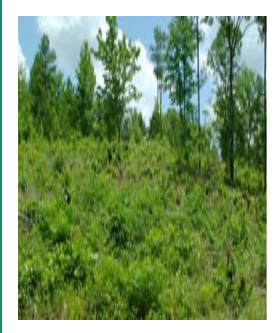


PROJECT SUMMARY



THE PROCESS

- **1 /2000 THRU 5/2002 - IDENTIFICATION OF PROBLEM AND NEED FOR ACTION, FIELD INVENTORY**
- 5/2002 - RELEASE OF PROJECT PROPOSAL AND PUBLIC SCOPING PERIOD
- 6/2002 THRU 1 /2003 - DETERMINE SIGNIFICANT ISSUES BASED ON SCOPING COMMENTS AND DEVELOP A RANGE OF ALTERNATIVES
- 1 /2003 THRU 6/2003 – CONDUCT ANALYSIS OF ALTERNATIVES
- 7/2003 – DECIDING OFFICER SELECTS PREFERRED ALTERNATIVE
- 7/2003 THRU 8/2003 – RELEASE OF DRAFT ENVIRONMENTAL IMPACT STATEMENT (EIS) AND 45-DAY COMMENT PERIOD
- 8/2003 THRU 9/2003 – ANALYSIS OF COMMENTS AND FINALIZE EIS, EIS AND RECORD OF DECISION (ROD) SENT TO PUBLISHER
- 10/2003 – RELEASE OF ROD AND FINAL EIS (WE ARE HERE)
- 11 /2003 INTO 12/2003 – 45-DAY APPEAL PERIOD



BANKHEAD NATIONAL FOREST



THE CURRENT SITUATION

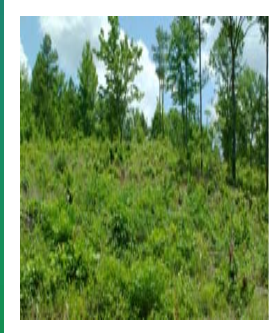


- 79,000 ACRES TYPED AS LOBLOLLY PINE
- 10-YEAR SOUTHERN PINE BEETLE EPIDEMIC RESULTED IN 18,000 ACRES OF PINE KILLED
- STANDING AND DOWNED DEAD TREES RESULTING IN HEAVY FUEL BUILDUPS, TRAILS BLOCKED, PUBLIC SAFETY CONCERNS, REDUCED VISUAL QUALITY



BANKHEAD NATIONAL FOREST

FOREST HEALTH AND RESTORATION PROJECT EIS – THE NEED FOR ACTION



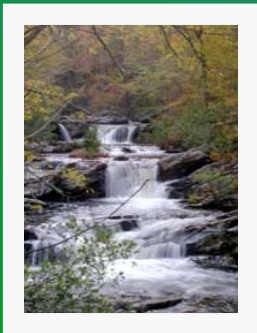
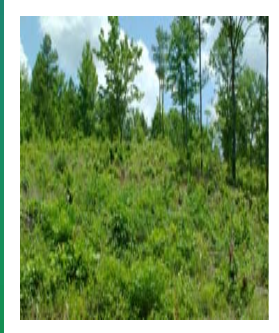
- Improve the short-term forest health (reduce SPB risks)
- Restore native upland hardwood forests
- Restore native fire dependent pine and oak woodlands
- Provide forest communities and habitats uncommon on other lands in the Southern Cumberland Plateau



BANKHEAD NATIONAL FOREST

THE PROCESS

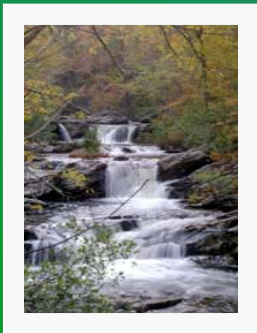
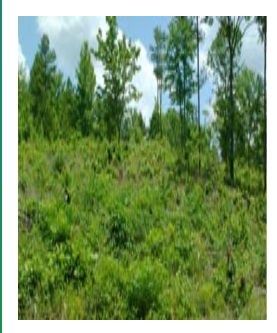
- 1/2000 THRU 5/2002 - IDENTIFICATION OF PROBLEM AND NEED FOR ACTION, FIELD INVENTORY
- **5/2002 - RELEASE OF PROJECT PROPOSAL AND PUBLIC SCOPING PERIOD**
- 6/2002 THRU 1/2003 - DETERMINE SIGNIFICANT ISSUES BASED ON SCOPING COMMENTS AND DEVELOP A RANGE OF ALTERNATIVES
- 1/2003 THRU 6/2003 – CONDUCT ANALYSIS OF ALTERNATIVES
- 7/2003 – DECIDING OFFICER SELECTS PREFERRED ALTERNATIVE
- 7/2003 THRU 8/2003 – RELEASE OF DRAFT ENVIRONMENTAL IMPACT STATEMENT (EIS) AND 45-DAY COMMENT PERIOD
- 8/2003 THRU 9/2003 – ANALYSIS OF COMMENTS AND FINALIZE EIS, EIS AND RECORD OF DECISION (ROD) SENT TO PUBLISHER
- 10/2003 – RELEASE OF ROD AND FINAL EIS (WE ARE HERE)
- 11/2003 INTO 12/2003 – 45-DAY APPEAL PERIOD



BANKHEAD NATIONAL FOREST

THE PROCESS

- 1/2000 THRU 5/2002 - IDENTIFICATION OF PROBLEM AND NEED FOR ACTION, FIELD INVENTORY
- 5/2002 - RELEASE OF PROJECT PROPOSAL AND PUBLIC SCOPING PERIOD
- **6/2002 THRU 1/2003 - DETERMINE SIGNIFICANT ISSUES BASED ON SCOPING COMMENTS AND DEVELOP A RANGE OF ALTERNATIVES**
- 1/2003 THRU 6/2003 – CONDUCT ANALYSIS OF ALTERNATIVES
- 7/2003 – DECIDING OFFICER SELECTS PREFERRED ALTERNATIVE
- 7/2003 THRU 8/2003 – RELEASE OF DRAFT ENVIRONMENTAL IMPACT STATEMENT (EIS) AND 45-DAY COMMENT PERIOD
- 8/2003 THRU 9/2003 – ANALYSIS OF COMMENTS AND FINALIZE EIS, EIS AND RECORD OF DECISION (ROD) SENT TO PUBLISHER
- 10/2003 – RELEASE OF ROD AND FINAL EIS (WE ARE HERE)
- 11/2003 INTO 12/2003 – 45-DAY APPEAL PERIOD

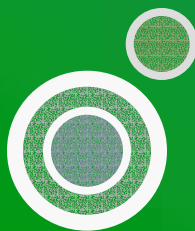
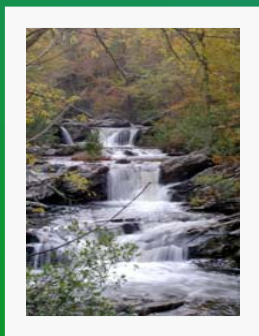
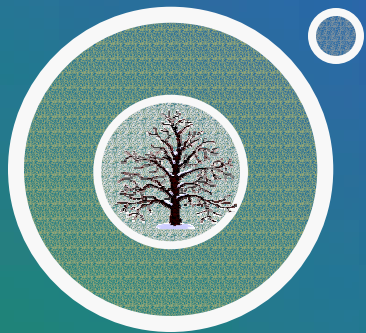


BANKHEAD NATIONAL FOREST

ISSUES

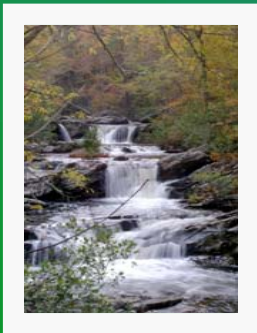
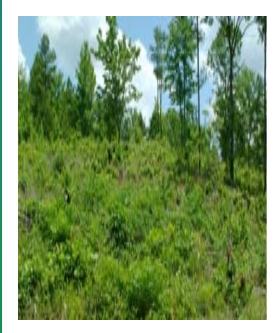
- ESTABLISHMENT OF FIRE-DEPENDENT WOODLANDS
- USE OF ARTIFICIAL PINE REGENERATION
- IMPACTS TO RECREATION AND CULTURAL VALUES
- ANNOSUM ROOT ROT AND LITTLELEAF DISEASE
- DISTRIBUTION OF EARLY SUCCESSIONAL HABITAT
- MIS AND TES
- USE OF COMMERCIAL TIMBER SALES
- THINNING AS A FIRST STEP IN RESTORATION
- SOIL AND WATER RESOURCES
- OLD-GROWTH FOREST COMMUNITIES

BANKHEAD NATIONAL FOREST



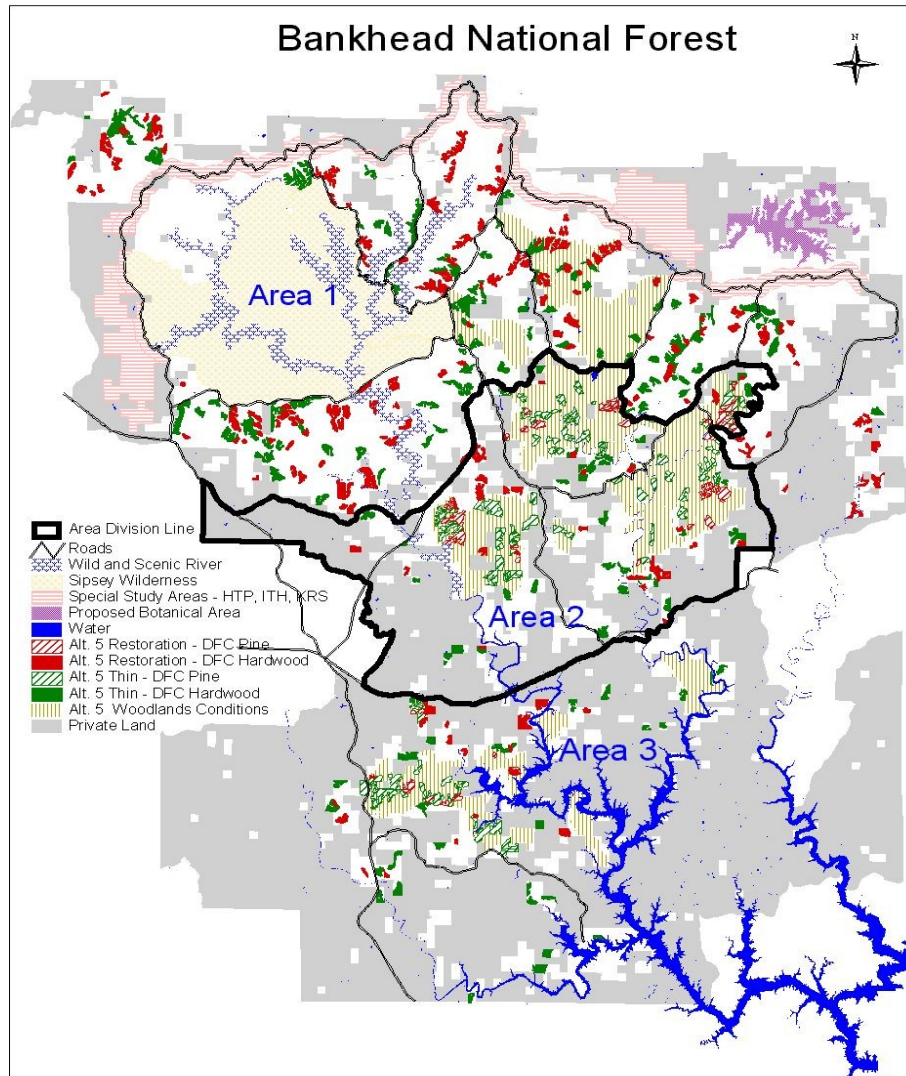
THE PROCESS

- 1/2000 THRU 5/2002 - IDENTIFICATION OF PROBLEM AND NEED FOR ACTION, FIELD INVENTORY
- 5/2002 - RELEASE OF PROJECT PROPOSAL AND PUBLIC SCOPING PERIOD
- 6/2002 THRU 1/2003 - DETERMINE SIGNIFICANT ISSUES BASED ON SCOPING COMMENTS AND DEVELOP A RANGE OF ALTERNATIVES
- **1/2003 THRU 6/2003 – CONDUCT ANALYSIS OF ALTERNATIVE**
- **7/2003 - DECIDING OFFICER SELECTS ALTERNATIVE 5 AS THE PREFERRED ALTERNATIVE**
- 7/2003 THRU 8/2003 – RELEASE OF DRAFT ENVIRONMENTAL IMPACT STATEMENT (EIS) AND 45-DAY COMMENT PERIOD
- 8/2003 THRU 9/2003 – ANALYSIS OF COMMENTS AND FINALIZE EIS, EIS AND RECORD OF DECISION (ROD) SENT TO PUBLISHER
- 10/2003 – RELEASE OF ROD AND FINAL EIS (WE ARE HERE)
- 11/2003 INTO 12/2003 – 45-DAY APPEAL PERIOD



BANKHEAD NATIONAL FOREST

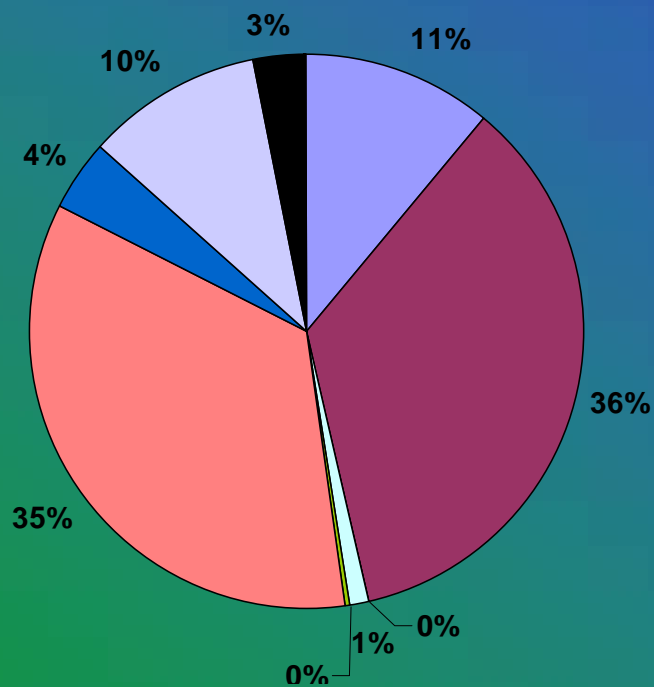
ALTERNATIVE 5 - THE PREFERRED THE FUTURE FOREST



- Area 1 – Emphasis on native upland hardwood restoration
- Area 2 – Emphasis on native fire-dependent shortleaf pine and oak woodland restoration
- Area 3 – Emphasis on native fire-dependent longleaf pine and oak woodland restoration

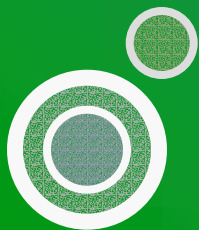
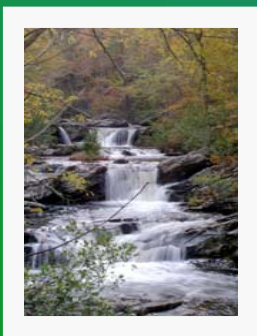
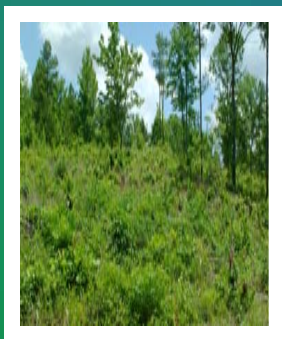
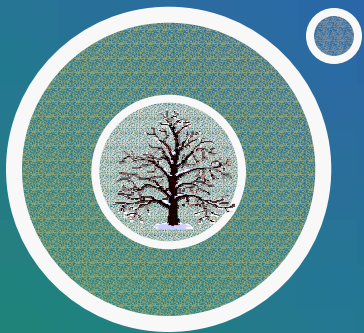
**BANKHEAD
NATIONAL FOREST**

FOREST CONDITIONS TODAY

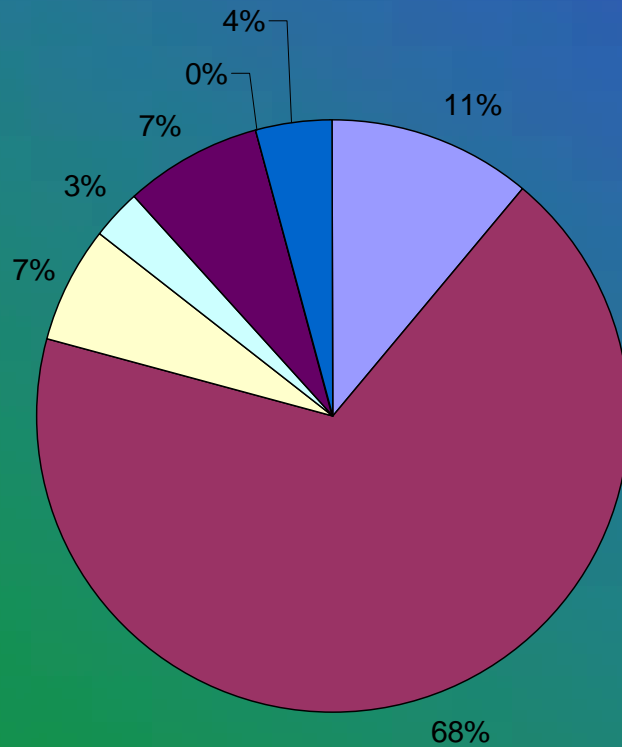


- Cove and Canyon Hardwood and Conifer- Northern Hardwood
- Upland Hardwood and Hardwood Pine
- Oak Woodlands
- Longleaf Pine
- Shortleaf Pine
- Loblolly Pine
- Virginia Pine
- Southern Pine Beetle Spots 10 Acres and Larger
- Uninventoried Lands

BANKHEAD NATIONAL FOREST

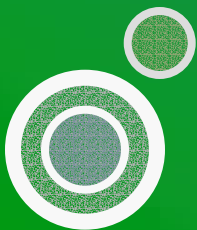
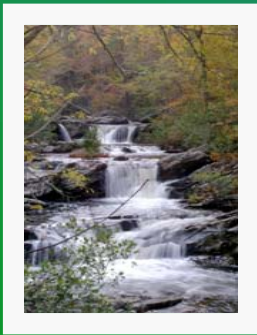
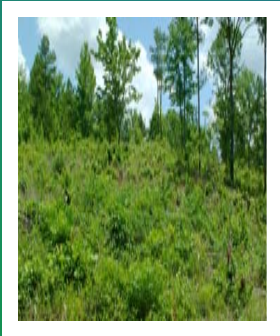
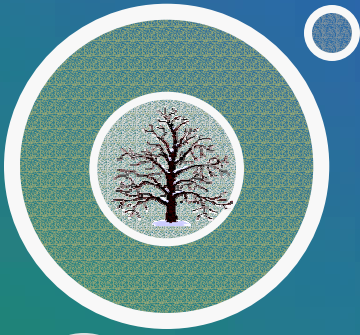


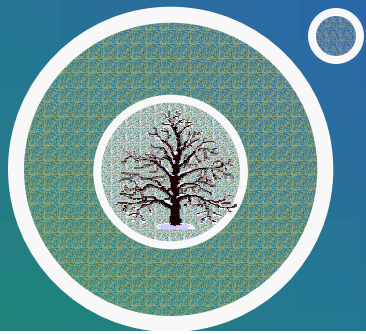
ALTERNATIVE 5 - "THE FUTURE FOREST"



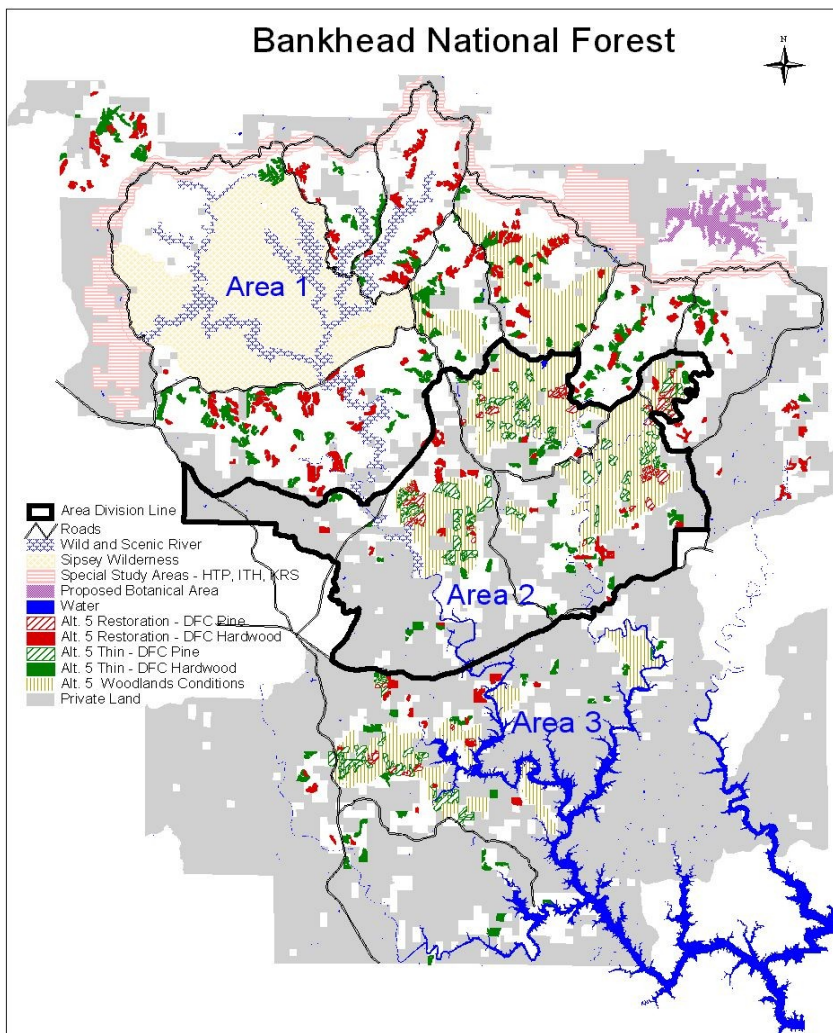
- Cove and Canyon Hardwood and Conifer-Northern Hardwood
- Upland Hardwood and Hardwood Pine
- Oak Woodlands
- Longleaf Pine Woodlands
- Shortleaf Pine Woodlands
- Loblolly Pine
- Virginia Pine Woodlands

BANKHEAD NATIONAL FOREST



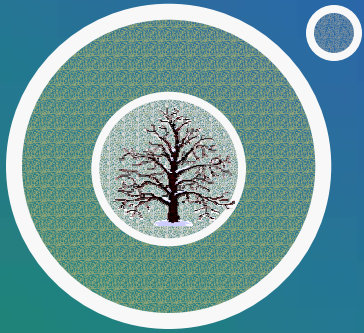


ALTERNATIVE 5 - THE PREFERRED FIVE YEAR PRIORITY WORK



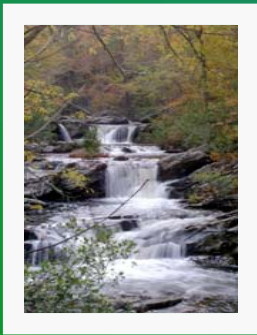
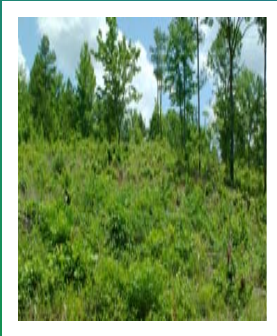
- Commercially thin 9,452 acres of overstocked loblolly pine
- Restoration of 6,860 acres of southern pine beetle impacted areas (shortleaf and longleaf planting, site preparation w/ fire and mechanical, hardwood natural regeneration)

**BANKHEAD NATIONAL
FOREST**

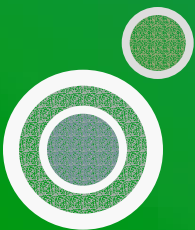


THE RESULTS

- **SHORT-TERM – REDUCED RISK TO SPB INFESTATION IN REMAINING LOBLOLLY PINE**
- **LONG-TERM - HEALTHIER/SUSTAINABLE WATERSHEDS, FORESTS AND HABITATS BY:**
- **INCREASING ACRES OF NATIVE UPLAND HARDWOOD FORESTS**
- **INCREASING ACRES AND DISTRIBUTION OF NATIVE**
- **FIRE-DEPENDENT PINE AND OAK WOODLANDS**

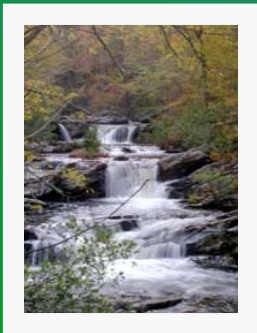
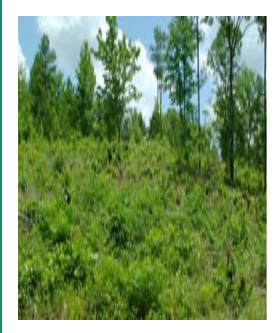


BANKHEAD NATIONAL FOREST



THE PROCESS

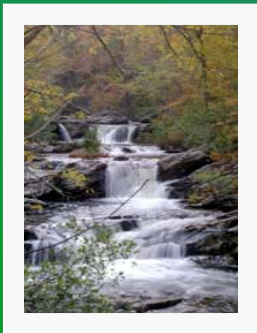
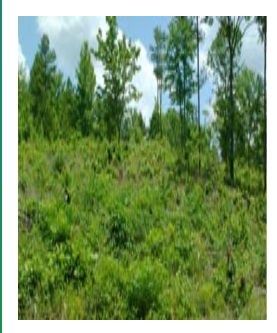
- 1/2000 THRU 5/2002 - IDENTIFICATION OF PROBLEM AND NEED FOR ACTION, FIELD INVENTORY
- 5/2002 - RELEASE OF PROJECT PROPOSAL AND PUBLIC SCOPING PERIOD
- 6/2002 THRU 1/2003 - DETERMINE SIGNIFICANT ISSUES BASED ON SCOPING COMMENTS AND DEVELOP A RANGE OF ALTERNATIVES
- 1/2003 THRU 6/2003 – CONDUCT ANALYSIS OF ALTERNATIVES
- 7/2003 – DECIDING OFFICER SELECTS PREFERRED ALTERNATIVE
- **7/2003 THRU 8/2003 – RELEASE OF DRAFT ENVIRONMENTAL IMPACT STATEMENT (EIS) AND 45-DAY COMMENT PERIOD**
- 8/2003 THRU 9/2003 – ANALYSIS OF COMMENTS AND FINALIZE EIS, EIS AND RECORD OF DECISION (ROD) SENT TO PUBLISHER
- 10/2003 – RELEASE OF ROD AND FINAL EIS (WE ARE HERE)
- 11/2003 INTO 12/2003 – 45-DAY APPEAL PERIOD



BANKHEAD NATIONAL FOREST

THE PROCESS

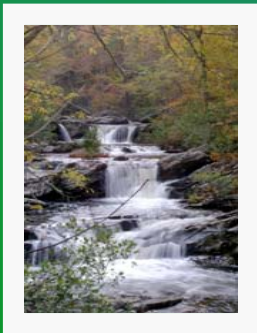
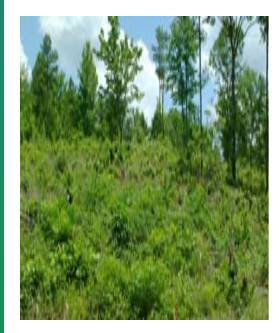
- 1/2000 THRU 5/2002 - IDENTIFICATION OF PROBLEM AND NEED FOR ACTION, FIELD INVENTORY
- 5/2002 - RELEASE OF PROJECT PROPOSAL AND PUBLIC SCOPING PERIOD
- 6/2002 THRU 1/2003 - DETERMINE SIGNIFICANT ISSUES BASED ON SCOPING COMMENTS AND DEVELOP A RANGE OF ALTERNATIVES
- 1/2003 THRU 6/2003 – CONDUCT ANALYSIS OF ALTERNATIVES
- 7/2003 – DECIDING OFFICER SELECTS PREFERRED ALTERNATIVE
- 7/2003 THRU 8/2003 – RELEASE OF DRAFT ENVIRONMENTAL IMPACT STATEMENT (EIS) AND 45-DAY COMMENT PERIOD
- **8/2003 THRU 9/2003 – ANALYSIS OF COMMENTS AND FINALIZE EIS, EIS AND RECORD OF DECISION (ROD) SENT TO PUBLISHER**
- 10/2003 – RELEASE OF ROD AND FINAL EIS (WE ARE HERE)
- 11/2003 INTO 12/2003 – 45-DAY APPEAL PERIOD



BANKHEAD NATIONAL FOREST

THE PROCESS

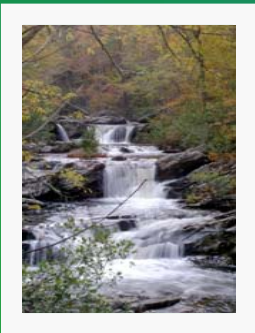
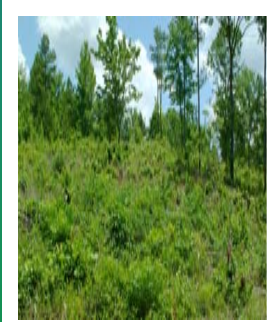
- 1/2000 THRU 5/2002 - IDENTIFICATION OF PROBLEM AND NEED FOR ACTION, FIELD INVENTORY
- 5/2002 - RELEASE OF PROJECT PROPOSAL AND PUBLIC SCOPING PERIOD
- 6/2002 THRU 1/2003 - DETERMINE SIGNIFICANT ISSUES BASED ON SCOPING COMMENTS AND DEVELOP A RANGE OF ALTERNATIVES
- 1/2003 THRU 6/2003 – CONDUCT ANALYSIS OF ALTERNATIVES
- 7/2003 – DECIDING OFFICER SELECTS PREFERRED ALTERNATIVE
- 7/2003 THRU 8/2003 – RELEASE OF DRAFT ENVIRONMENTAL IMPACT STATEMENT (EIS) AND 45-DAY COMMENT PERIOD
- 8/2003 THRU 9/2003 – ANALYSIS OF COMMENTS AND FINALIZE EIS, EIS AND RECORD OF DECISION (ROD) SENT TO PUBLISHER
- **10/2003 – RELEASE OF ROD AND FINAL EIS (WE ARE HERE)**
- 11/2003 INTO 12/2003 – 45-DAY APPEAL PERIOD



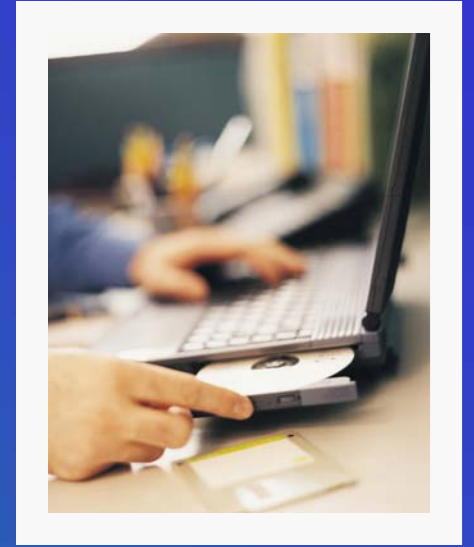
BANKHEAD NATIONAL FOREST

THE PROCESS

- 1/2000 THRU 5/2002 - IDENTIFICATION OF PROBLEM AND NEED FOR ACTION, FIELD INVENTORY
- 5/2002 - RELEASE OF PROJECT PROPOSAL AND PUBLIC SCOPING PERIOD
- 6/2002 THRU 1/2003 - DETERMINE SIGNIFICANT ISSUES BASED ON SCOPING COMMENTS AND DEVELOP A RANGE OF ALTERNATIVES
- 1/2003 THRU 6/2003 – CONDUCT ANALYSIS OF ALTERNATIVES
- 7/2003 – DECIDING OFFICER SELECTS PREFERRED ALTERNATIVE
- 7/2003 THRU 8/2003 – RELEASE OF DRAFT ENVIRONMENTAL IMPACT STATEMENT (EIS) AND 45-DAY COMMENT PERIOD
- 8/2003 THRU 9/2003 – ANALYSIS OF COMMENTS AND FINALIZE EIS, EIS AND RECORD OF DECISION (ROD) SENT TO PUBLISHER
- 10/2003 – RELEASE OF ROD AND FINAL EIS (WE ARE HERE)
- **10/2003 INTO 12/2003 – 45-DAY APPEAL PERIOD**

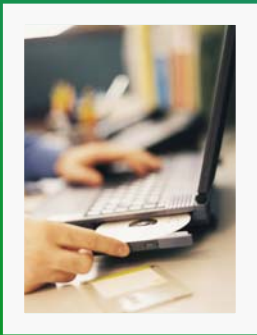
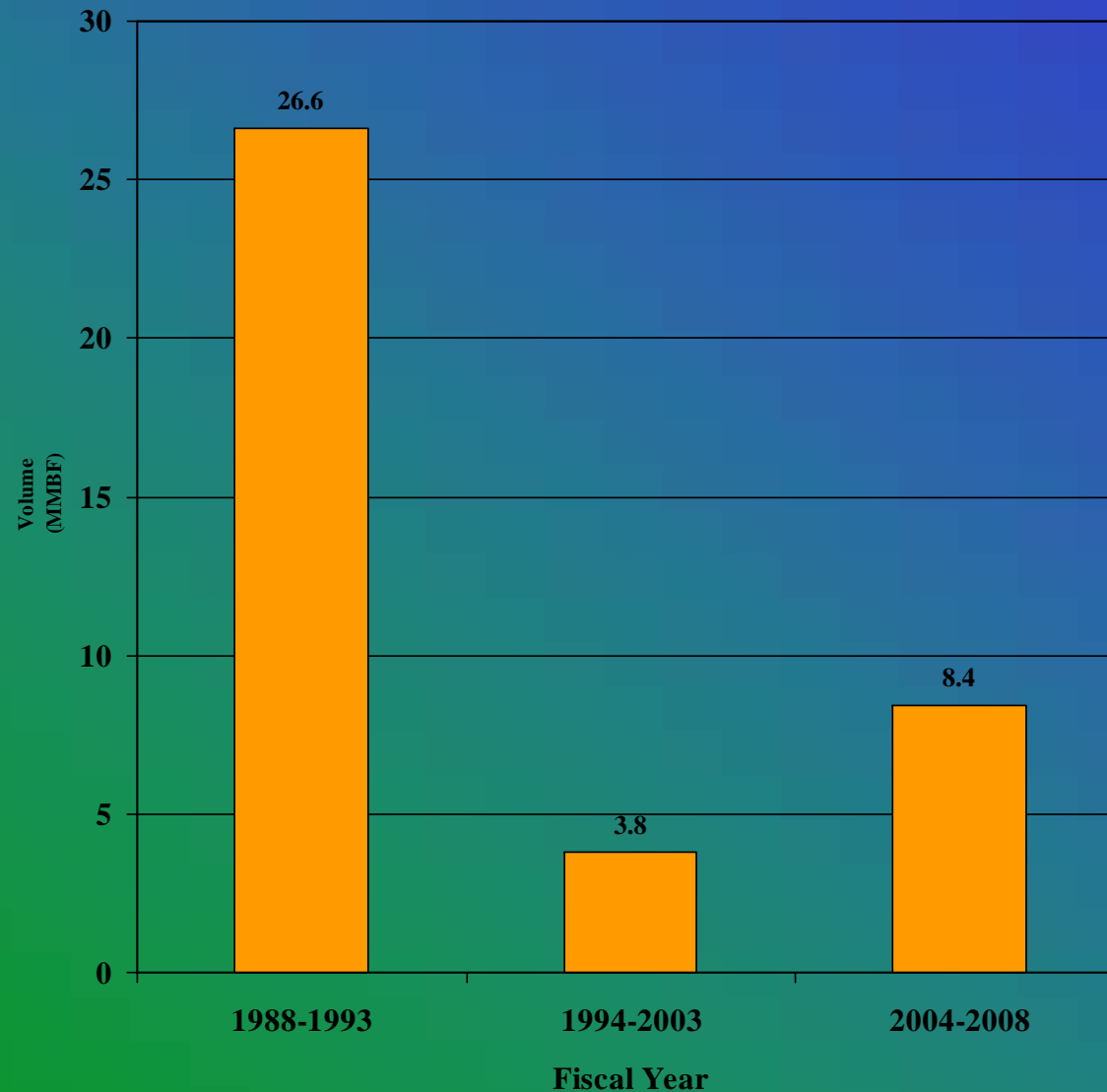


BANKHEAD NATIONAL FOREST

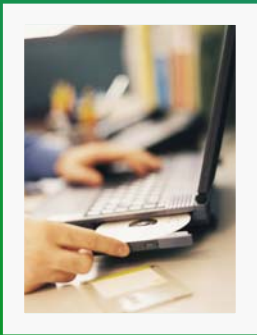
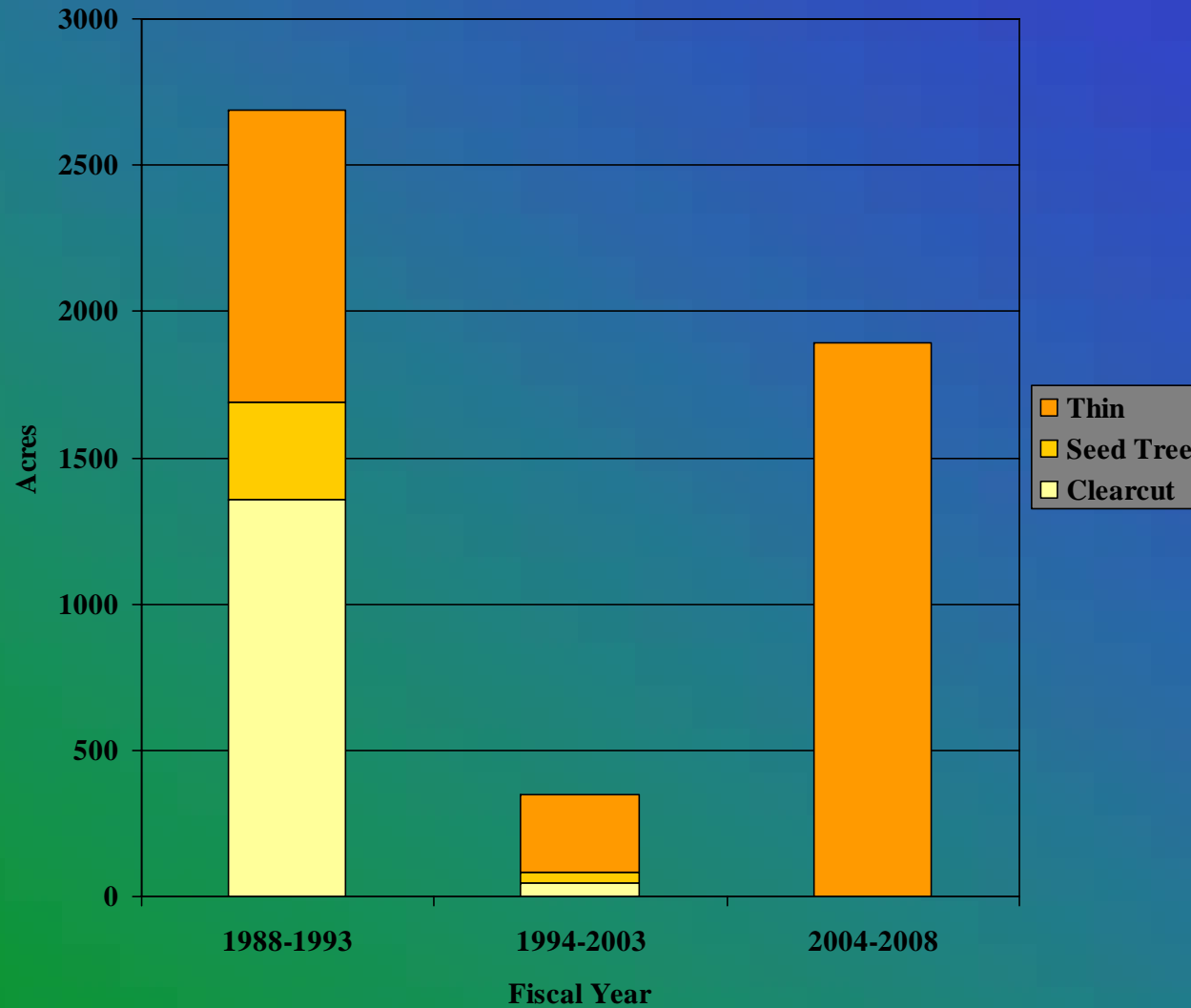


Economic Impacts

BANKHEAD NATIONAL FOREST GREEN SALE ANNUAL TIMBER VOLUME 20 YEAR TRENDS AND PROJECTIONS

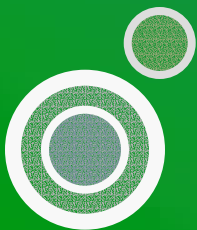
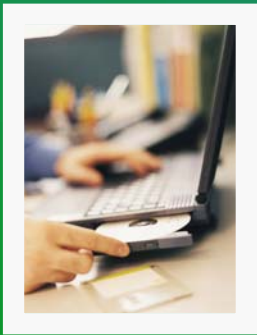
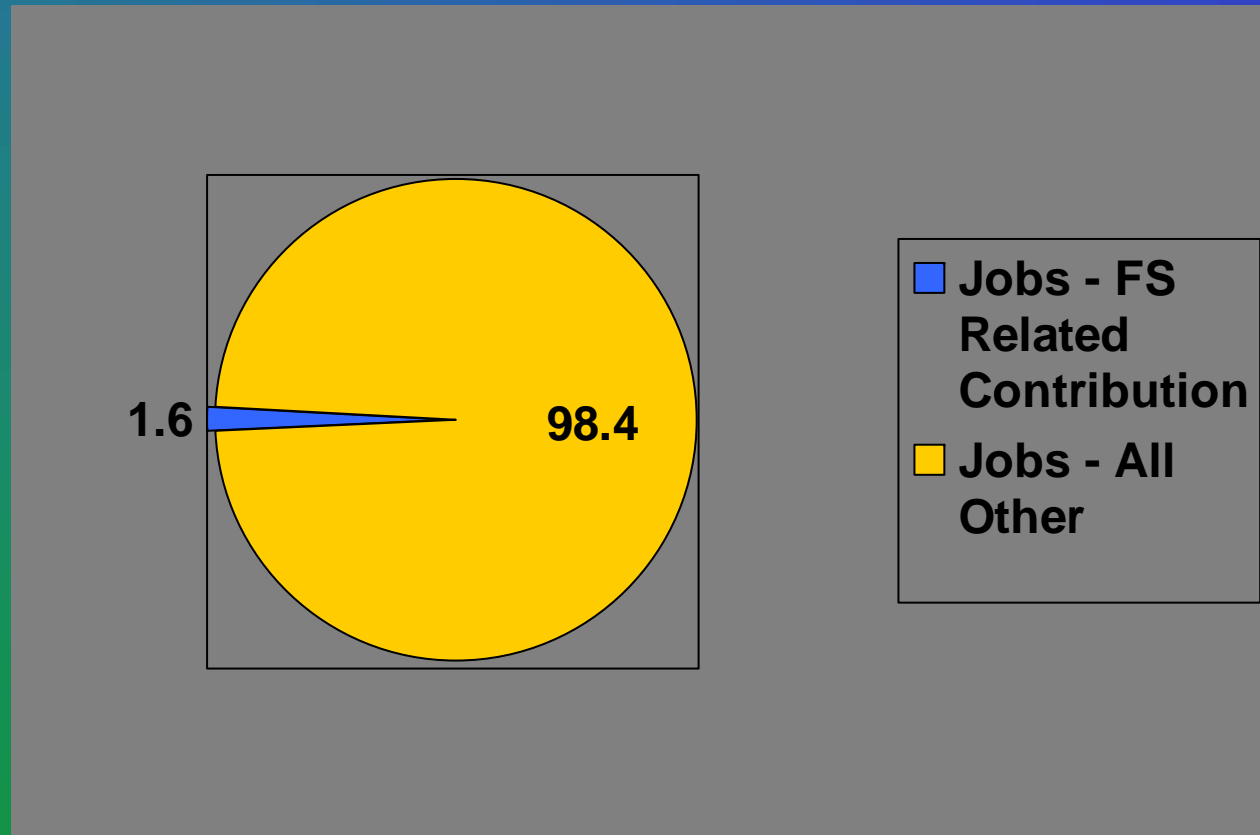


BANKHEAD NATIONAL FOREST ANNUAL ACRES TREATED BY TIMBER HARVEST 20 YEAR TRENDS AND PROJECTIONS

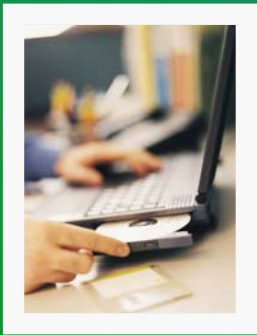
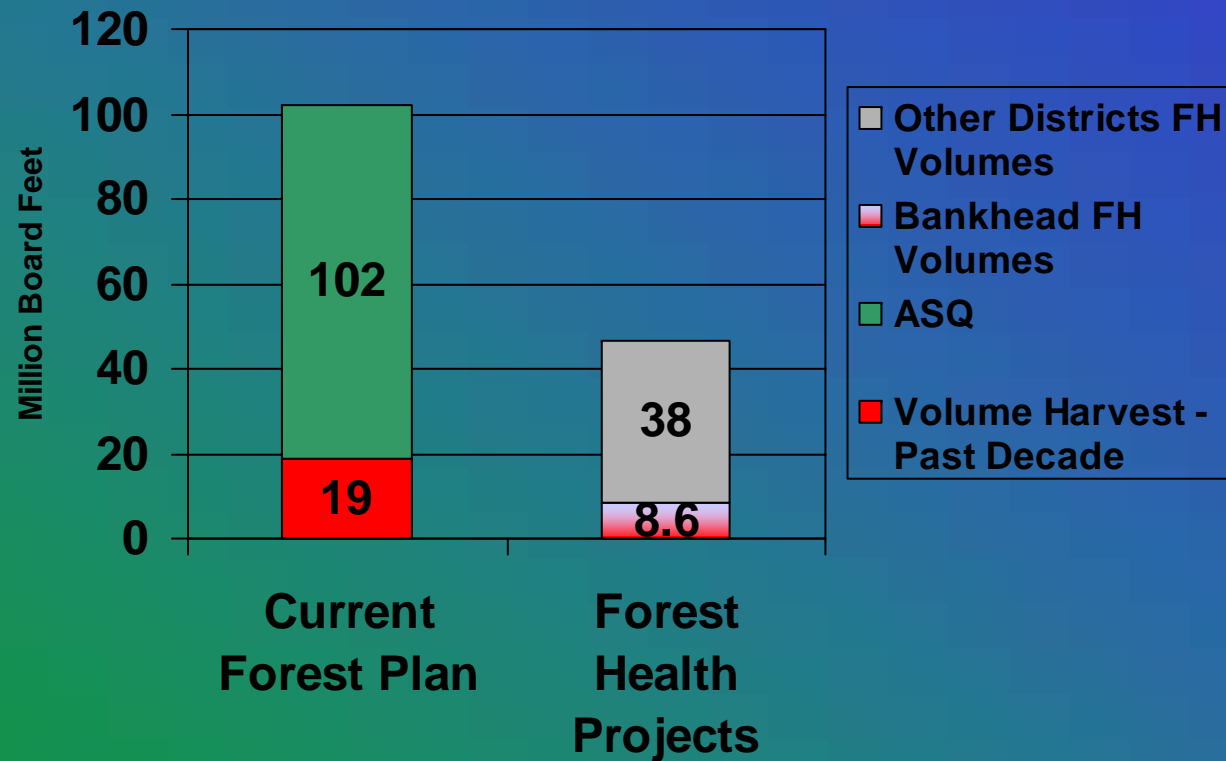




NFS Contribution to Area Jobs – Current Forest Plan

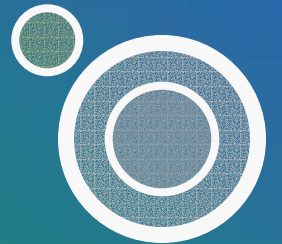


NFs in AL Volume Trends Past Decade and Projected Forest Health Volumes





Public Involvement



PUBLIC INVOLVEMENT

- Liaison Panel public forums since Spring 2000
- Pre-NEPA Scoping “Forest Health Brochure” – Early Spring 2002
- 5/2002 - Release of project proposal and public scoping Period
- 11/2002 to May 2003 - 7-month facilitated public forums with the Liaison Panel
- 7/2003 thru 8/2003 – release of draft environmental impact statement (EIS) and 45-day comment period
- 9/2003 – Meetings with concerned elected officials, meeting with persons providing comments, and Free State of Winston Natural Resources Committee meeting

