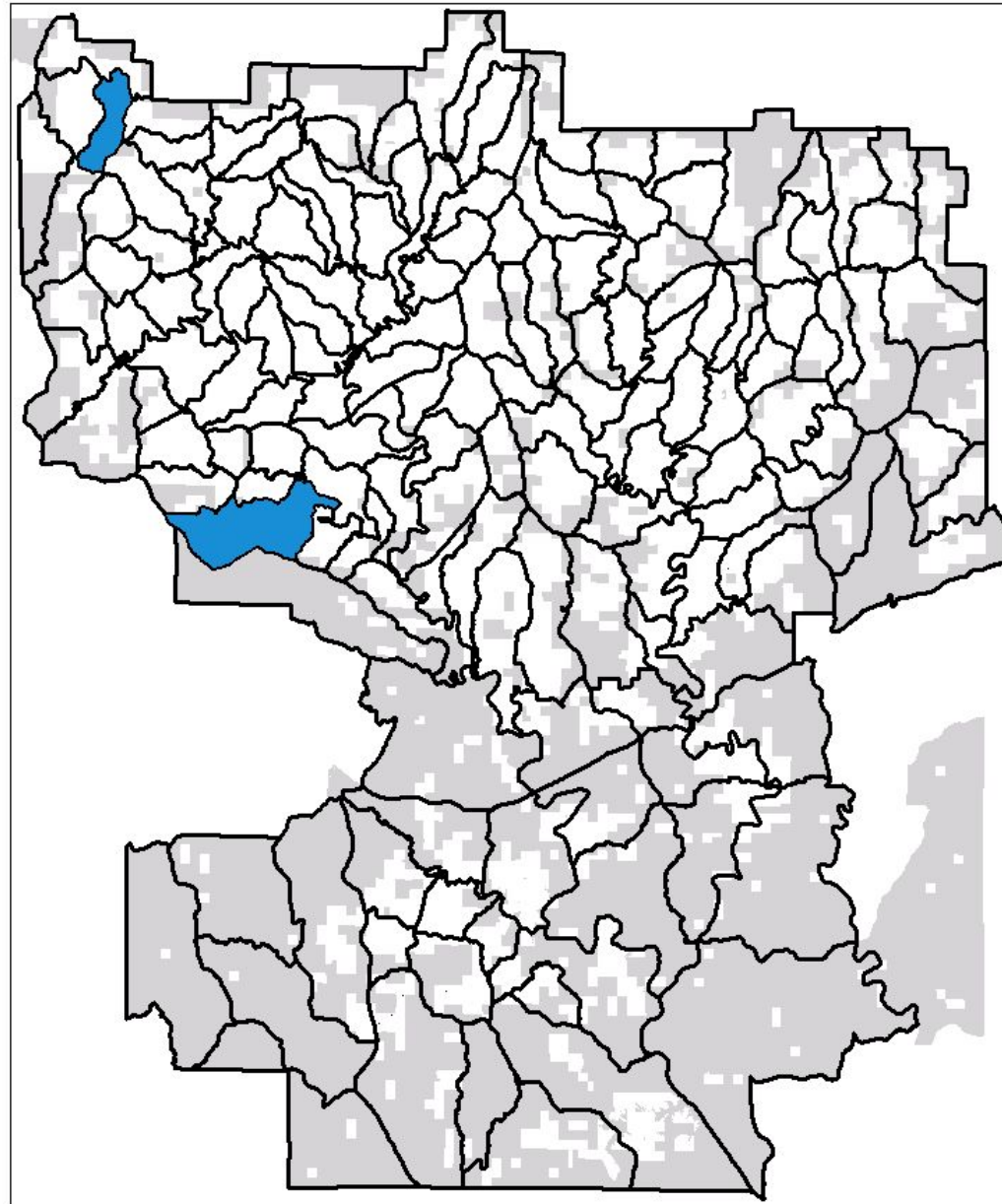


# Additional Thinning Stands Presentation

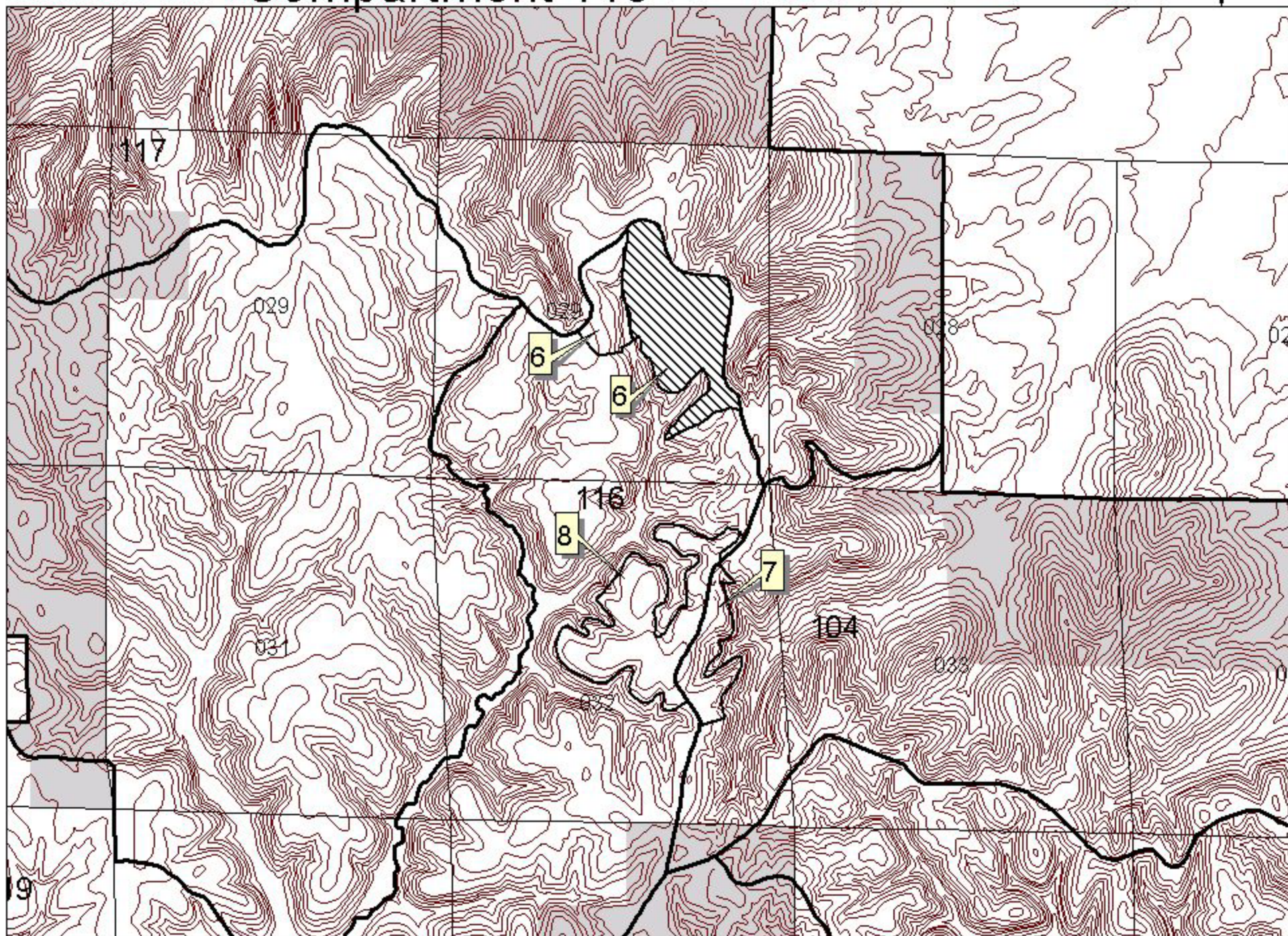
- Presentation illustrates stand missed during the recent EIS for various reasons.
- Discussed Compartment 92 and Compartment 116 and discuss the three stands in these two compartments.
- Slide 1 (next slide) depicts location of the two compartments on the district.
- Slide 2, illustrates compartment 116, Stand 6.
- Slide 3 is actual photograph of compartment 116.
- Slide 4, is an illustration of compartment 92, stands 4 & 28.
- Slide 5 is actual photograph of compartment 92.
- During the March meeting, there was a proposal to go ahead and thin these stands. A consideration is to add these stands to the planned sales as they occur.
- These stands were not covered in the EIS, and will need to be part of the NEPA process. However, the direction the EIS set for Desired Future Conditions (DFC), can be followed.
- The NEPA vehicle for a project like this is called a Categorical Exclusion (CE). A scoping process will still occur with the public; biological surveys and cultural resource surveys are conducted; and a biological evaluation and cultural resource report is prepared.
- Based on scoping comments and outcomes of the surveys and reports a decision would be made. The decision is not appealable. With the CE process we can get these stands into the system in a timely fashion.

# Compartment 92 and 116



# Compartment 116

scale = 1:24000

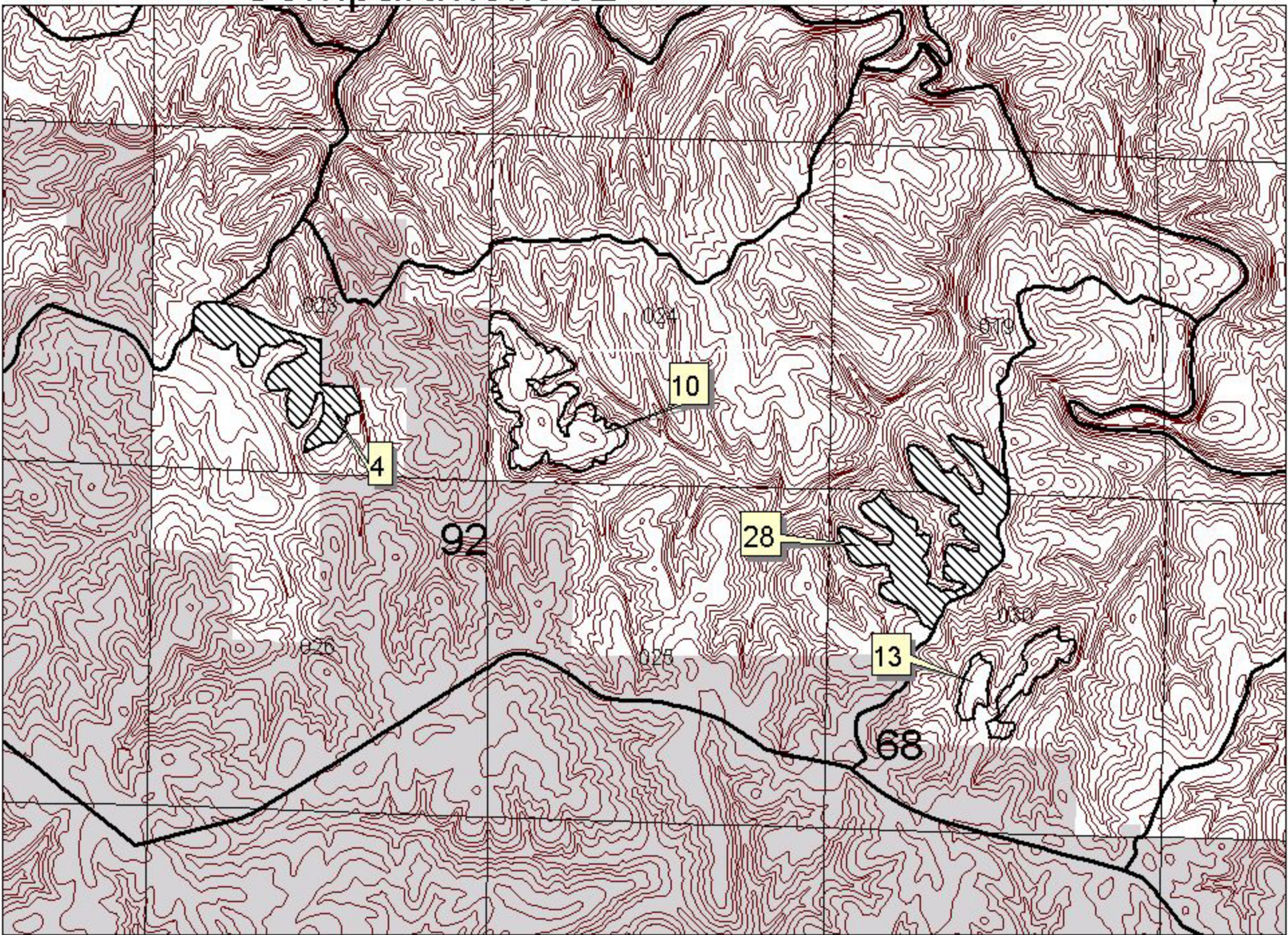




Compartment 116 Stand 6

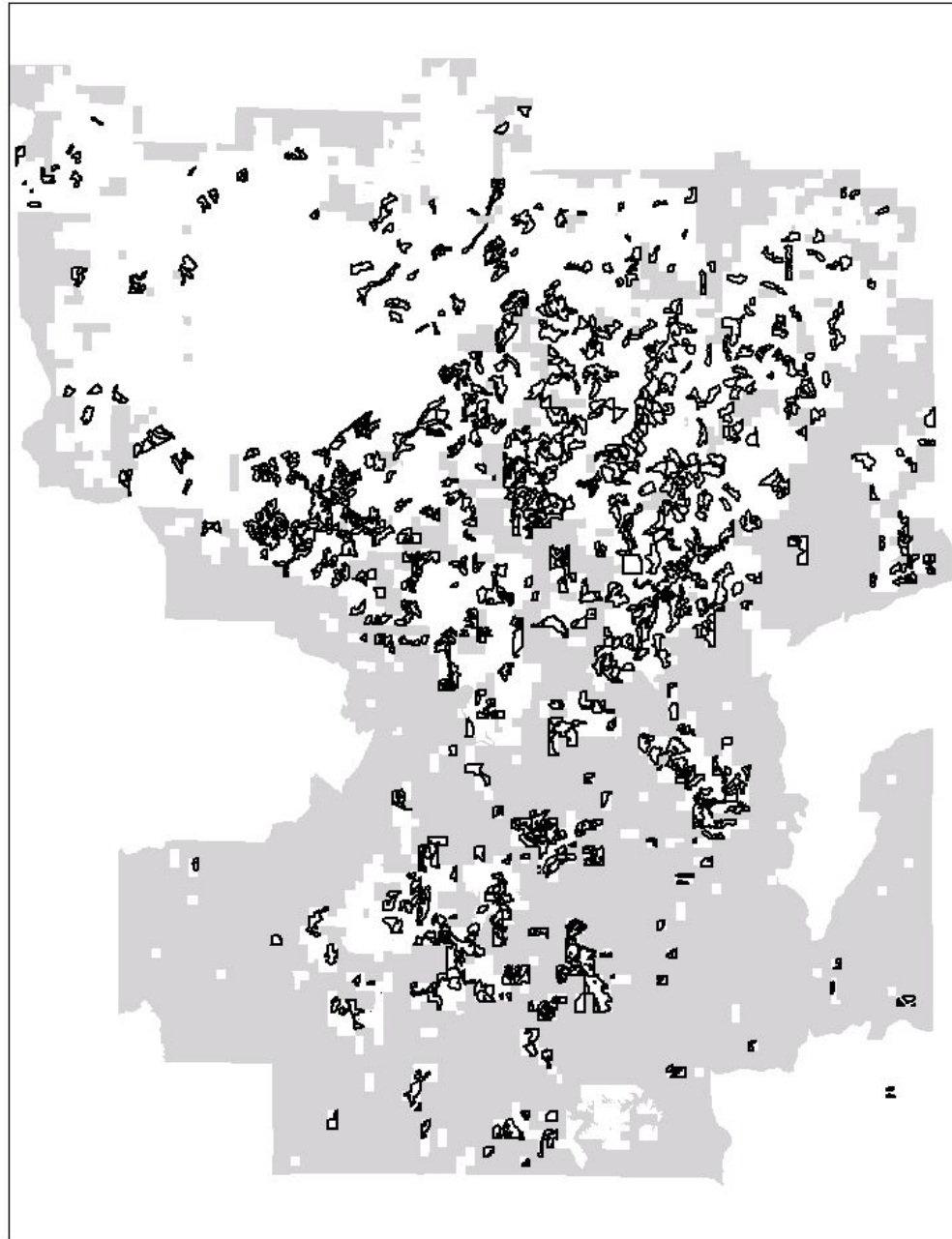
# Compartment 92

scale = 1:24000





# Loblolly and Shortleaf Pine Stands Over 45 Years Old



29,000 Acres  
Over 45 Years  
Of Age

4,000 Acres  
Killed by SPB