

**BANKHEAD NATIONAL FOREST
LIAISON PANEL MEETING SUMMARY
April 10, 2008
DOUBLE SPRINGS, ALABAMA**

Attendees

*Attendee List Not Available

Meeting Agenda

6:00	Welcome and Review Agenda	Glen Gaines USDA Forest Service
6:15	Bankhead Center for Research and Education	Mary Jeanne Packer, The Bankhead Education Foundation
7:30	An Update on Rockhouse and Hoghouse Watershed Project	Glen Gaines
8:00	An Update on the Proposed Owl Creek Trail Expansion	Glen Gaines Enid Erickson USDA Forest Service
8:45	Adjourn	

The Bankhead Center for Research and Education

Mary Jeanne Packer presented an overview of a project being sponsored by the Bankhead Education Foundation. The presentation follows:

Rockhouse/Hoghouse Watershed Project Update - Glen Gaines

Rockhouse/Hoghouse Watershed Project

- The DRAFT EA is near completion
- Formal Notice and Comment Period – beginning in May 2008

Rockhouse/ Hoghouse Watersheds Summary of Proposed Activities

- Intermediate Thinning -1543 acres
- Pre-commercial Thinning -33 acres
- Mid-story treatments – 428 acres (Includes use of herbicide)
- Restoration Cuts – 132 acres
- Stand Replacement Cuts – 32 acres
- Longleaf Pine Release – 70 acres
- Hardwood Release – 91 acres
- Road Construction – 1.43 miles
- Prescribed burning (6 units) – 3222 acres
- Upland wildlife habitat imp. – 28 acres

Update on Proposed Owl Creek Trail Expansion - Glen Gaines

Overall Vision

- Equestrian Use Will Integrate Well With Other Dispersed and Trail-Based Recreation Activities
- The Use Does Not Conflict With Forest Health & Restoration Goals or With the Recovery of Threatened and Endangered Species
- Development Will Take Place Within the Capability to Maintain Improvements to Standard Over the Long-Term

Overall Vision

- Provide Capability for Moderate Use Through a System of Trails/Road Routes Totaling 75-100 Miles (Approximately 54 miles of trails currently open to horses)
- Provide Trails That Are Safe and Facilities That are Healthy and Clean
- The Bankhead Will Primarily Serve Local Equestrian Users Living Within 100 miles

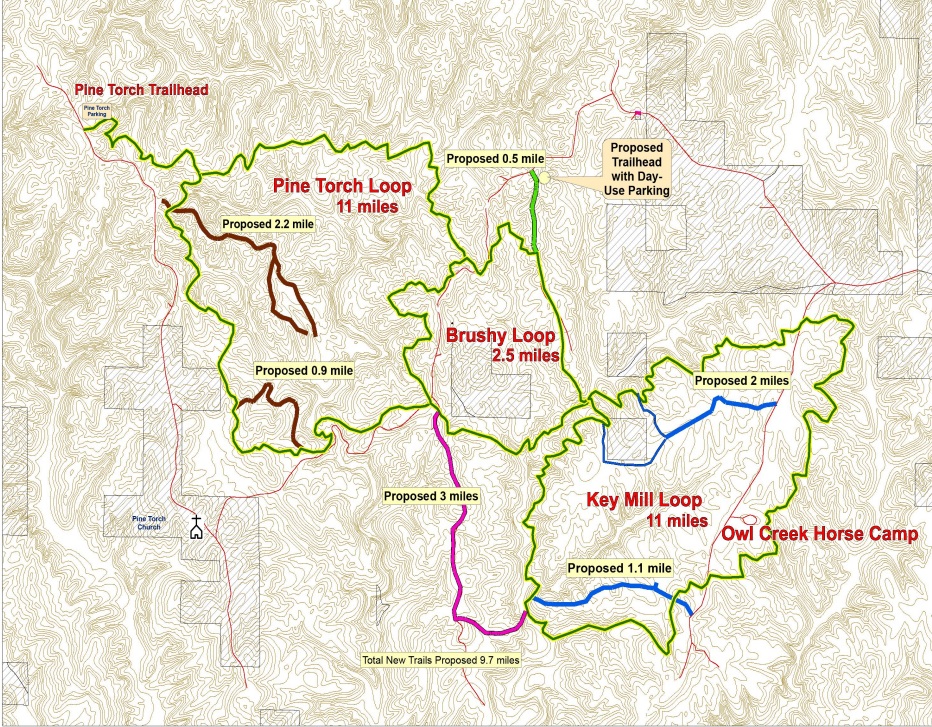
Proposed Owl Creek Trail Improvements

- Add 9.7 miles of trails to the Owl Creek System
- Reroute eroded trail locations
- Seasonal closure on portion of trail near the Key Mill Creek crossing
- Add a new day-use trailhead on Brushy Creek Road

Owl Creek Horse Camp and Trail System
New Trail Proposal



- Legend
- Roads
 - Existing Trails
 - Proposed Trails
 - Loop 1
 - Loop 2
 - Loop 3
 - Loop 4
 - ▭ Private Land



Owl Creek Trail Maintenance Needs

- Maintain 3-1/2 foot width on trails
- Improve water diversion on trails
- Implement a rotating annual maintenance program for horse trail sections
- Maintain and monitor stream crossings that do not impact T&E stream species (mussels)
- Inventory and close user-made, non-designated trails

Proposed Owl Creek Camp Improvements

- Add additional hitching rails and improve drainage around hitching rails
- Change horse camp permit to also provide access to Brushy Lake Day-Use Area bath house