



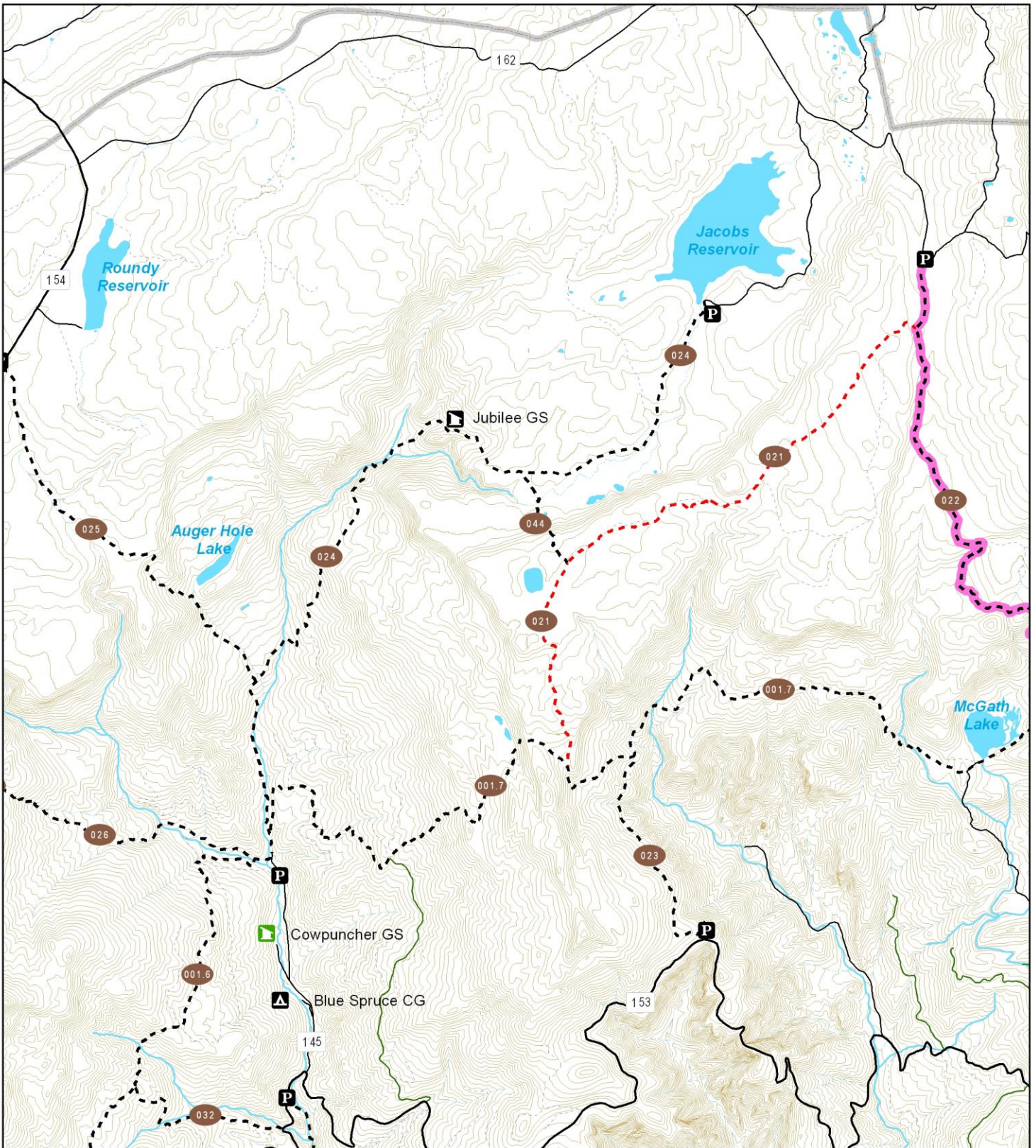
Jubilee TR. NO. 024

Escalante Ranger District, Dixie National Forest

- General Description:** A strenuous trail to the historic Jubilee Guard Station. The trail climbs through fir and aspen forests and follows Pine Creek most of the way.
- Mileage:** 4.5 miles one way to the Jubilee Guard Station
- Difficulty:** Foot: moderate/strenuous
Bike: not recommended
Horse: easy/moderate
OHV: not permitted
- Trailhead access:** Graded dirt road
- Elevation loss / gain:** 1520 feet
- Water availability:** Water is available in Pine Creek. Bring your own water for day hikes. All water should be filtered or treated before drinking.
- Hazards / obstacles:** Mosquitoes can be prevalent in spring and early summer, wear a long sleeve shirt and pants and use insect repellent. Weather can change quickly. Be prepared for cold weather year-round. Ridges, saddles, view points and open meadows are dangerous during thunderstorms.
- Topo maps:** USGS 7.5 minute quads: Posy Lake, Big Lake, Jacobs Reservoir

The Trailhead: From Escalante, turn north on the Hells Backbone Road (300 E). At 0.7 miles the road will fork, stay right. After 3.5 miles the road will turn to gravel and is now called Forest Road 153 (FR 153). At 13.6 miles the road will fork, turn right following the sign to "Hells Backbone Bridge" (FR 153). At 18 miles turn left on FR 145 to Blue Spruce Campground. Drive approximately 2 miles (stay right at the signed junction) and park in the small parking area on the left.

The Trail: From the trailhead take the trail that leaves the parking area to the north. The trail begins its gradual climb. At the first creek crossing the trail leads you down to the creek where there is not a bridge. You can cross here or back track a short distance where a faint trail continues up stream and will lead you to a bridge. The trail will become steeper as you continue. After approximately 1.5 miles you will come to a signed junction. Go right toward Jubilee Guard Station and Jacob Reservoir. After the next foot bridge you will come to another junction (this one is not signed), take the trail to the left. The trail will climb steeply from here on. This section of the trail will be away from the creek. You will come to a spot where there is a meadow and the remains of an old cabin in the trees. The trail heads up through the meadow. Look closely and you will see blazes in the trees through the meadow. After you come back to the creek there will be another unsigned junction. Continue straight, not crossing the creek. As you climb out of the drainage you will see a large pile of rocks holding up an old flag pole. The guard station is just a few minutes further up the trail.



Legend

- | | | | |
|------------------------------|------------------------|------------------------|--|
| 001.6 GWT Pine Creek Section | 024 Jubilee Trail | 132 Road Number | --- Non-Motorized Trail |
| 001.7 GWT McGath Section | 025 Auger Hole Trail | P Trailhead | Motorized Trail (Vehicles 50' or Less) |
| 021 Burr Top Trail | 026 West Fork Trail | A Campground | — Main Forest Road (All Vehicles) |
| 022 Boulder Swale ATV Trail | 044 Jubburr Spur Trail | G Guard Station | — Forest Road (All Vehicles) |
| 023 Rogers Peak Trail | | R Rental Guard Station | — Seasonal Road (All Vehicles) |
| | | | --- Closed Road (For Reference Only) |

