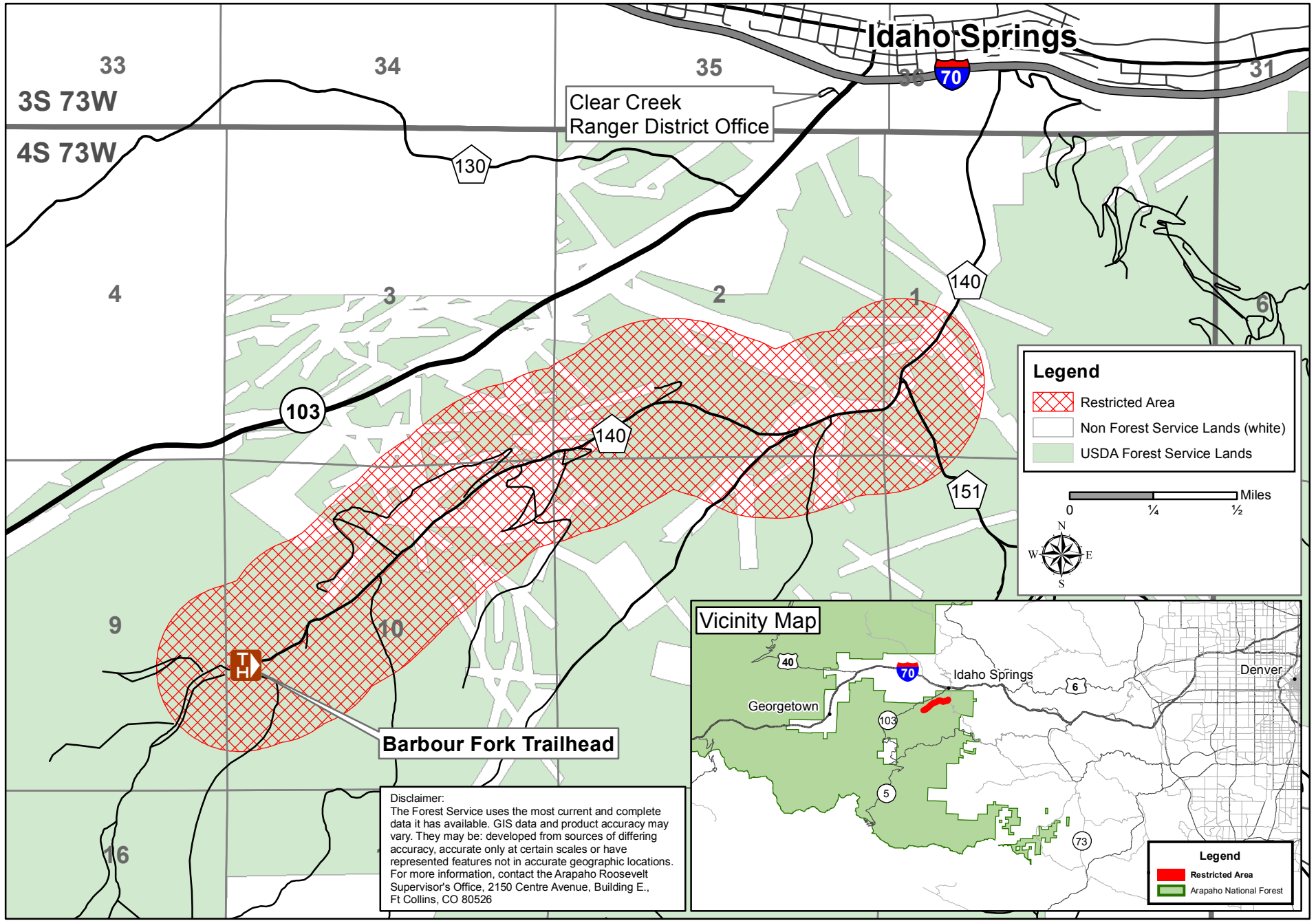




**Closure Order No. ARP-CCRD-2015-04  
Applies to National Forest System Lands Only**

**Arapaho National Forest Clear Creek Ranger District  
T4S R73W Sections 1,2,3,9,10,11,12**



**Legend**

- Restricted Area
- Non Forest Service Lands (white)
- USDA Forest Service Lands

0 1/4 1/2 Miles

**Vicinity Map**

**Legend**

- Restricted Area
- Arapaho National Forest

**Disclaimer:**  
The Forest Service uses the most current and complete data it has available. GIS data and product accuracy may vary. They may be: developed from sources of differing accuracy, accurate only at certain scales or have represented features not in accurate geographic locations. For more information, contact the Arapaho Roosevelt Supervisor's Office, 2150 Centre Avenue, Building E., Ft Collins, CO 80526