

# Recreation Fee Program Accomplishment Highlights 2014 Idaho Panhandle National Forests



## Stairway to Little Guard

Heavy winter snow loads damaged a wooden stairway and railing at Little Guard Lookout, a popular rental cabin on the Coeur d'Alene River Ranger District. Revenue from cabin rental fees of \$1,200 funded seasonal employees and other skilled laborers to construct a low-maintenance rock stairway to replace the damaged structure. The new stairway improves safety, and the use of native rock enhances the appearance of the site. Rental fee revenue also contributed to funding overall operations and maintenance of Little Guard and other rental cabins on the ranger district.



*Little Guard Lookout received a new stairwell in 2014.*

## Recreation Fee Dollars

Recreation fee dollars are an investment in outdoor recreation. They support and enhance:

- Public safety
- Recreation site maintenance and improvements
- Educational experiences
- Informational wayside exhibits
- Youth programs and partnerships
- Interpretive programs

Current and future generations will benefit as 80-95% of the funds are reinvested in the facilities and services that visitors enjoy, use, and value.

## Garnet Hunting

Gem enthusiasts and rock hounds enjoy mining for rare star garnets at the Emerald Creek Garnet Area. In 2014, seasonal employees assisted over 5,500 visitors, including 1,450 children, with the sifting and sluicing process. The average person walks away with 2 to 3 ounces. More serious diggers occasionally find 4 to 6 pounds in a day.

Operations require four employees and recreation fee revenues of \$45,000 cover about half of the total operating cost.



## Forest Revenue & Expenditures

Revenue*	Amount
Recreation Fees	\$153,780
Special Uses	\$30,044
Interagency Passes	\$3,955
<b>Total</b>	<b>\$187,779</b>
Expenditures	Amount
Repair & Maintenance	\$101,641
Visitor Services	\$15,696
Law Enforcement	\$7,237
Habitat Restoration	\$0
Fee Agreements	\$0
Cost of Collections	\$17,709
<b>Total</b>	<b>\$142,282</b>

\*Carryover funds will be used for large projects and the following season's startup costs.

## Other Highlights

- The Forest Service operates and maintains over 50 campsites, a host cabin and numerous vault toilets on Kalispell Island, the most visited island on Priest Lake, a highly popular recreation area. A single dock, which was in very poor condition, serves the island. Recreation fee revenue of \$1,800 enabled seasonal employees to replace the support structure and decking materials, resulting in a safer dock.

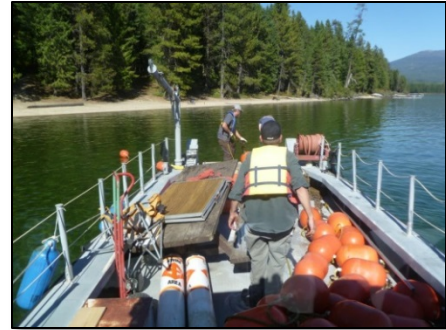
*Seasonal employees replace a deteriorating dock.*



- Maintained and repaired eight historic rental cabins, which included peeling larch logs to use as replacement rafters at one cabin.
- Cleaned, repaired and maintained facilities at 39 campgrounds and 80 boat-in only campsites.



*Using a diseased cedar tree, workers built a new sign post for the Red Ives cabin rental.*



*Employees delineate a swimming area on Priest Lake.*

## Contacts

### Idaho Panhandle National Forests

Recreation Fee Program Contact

**208-765-7214**

Email: [scolyer@fs.fed.us](mailto:scolyer@fs.fed.us)

Online: [www.fs.usda.gov/ipnf](http://www.fs.usda.gov/ipnf)

Regional Contact

**406-329-3587**

Email: [jpward02@fs.fed.us](mailto:jpward02@fs.fed.us)

The USDA is an equal opportunity employer and provider.

### Regional Revenue & Expenditures

Revenue*	Amount
Recreation Fees	\$1,685,135
Special Uses	\$1,057,405
Interagency Passes	\$42,213
<b>Total</b>	<b>\$2,784,753</b>

Expenditures	Amount
Repair & Maintenance	\$1,149,720
Visitor Services	\$848,621
Law Enforcement	\$100,372
Habitat Restoration	\$73,367
Fee Agreements	\$53,544
Cost of Collections	\$190,126
<b>Total</b>	<b>\$2,415,749</b>

\*Carryover funds will be used for large projects and the following season's startup costs

## Northern Region Map

