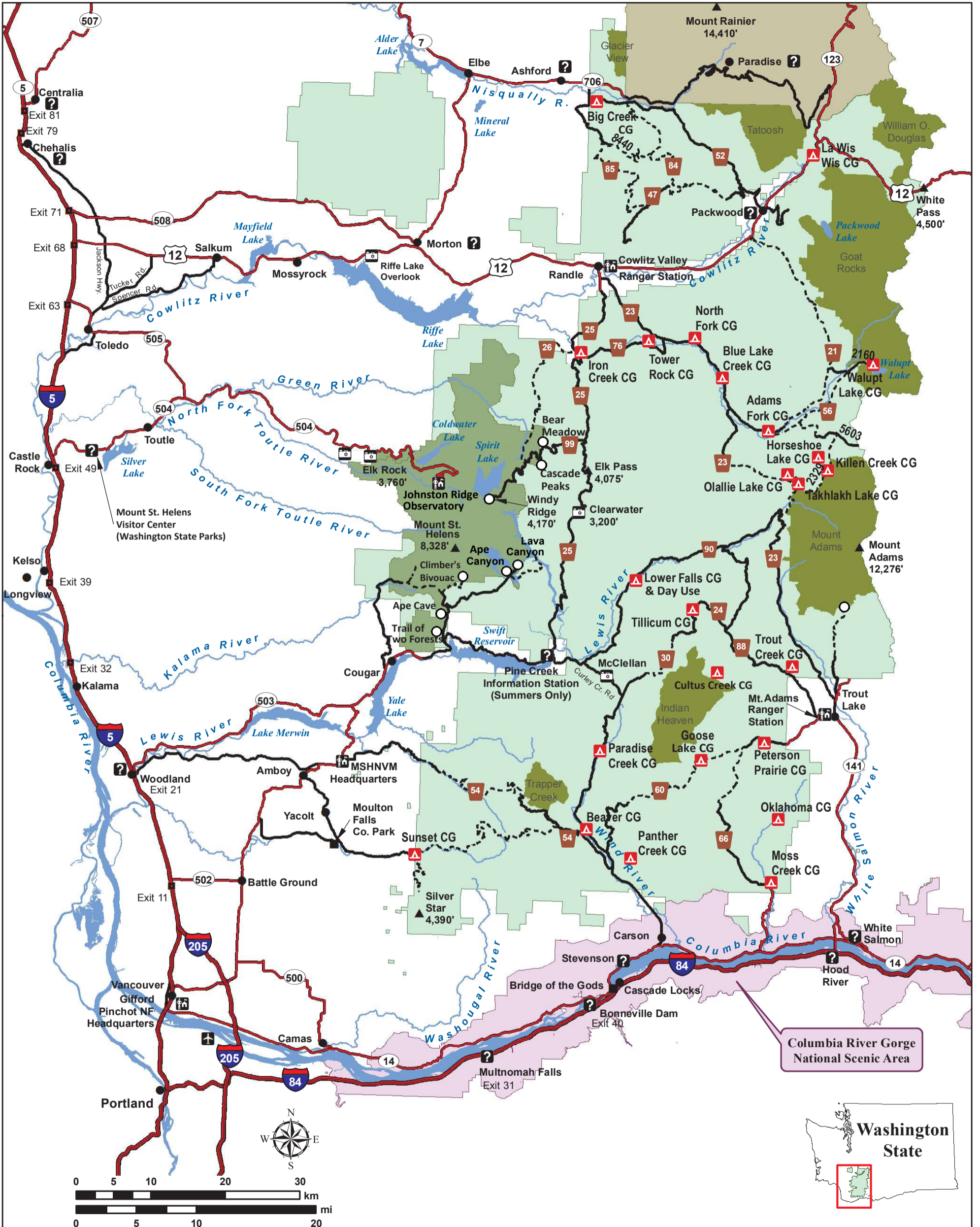


# Gifford Pinchot National Forest Vicinity



For more information, visit our website at:  
<http://www.fs.usda.gov/giffordpinchot>

or call (360) 891-5000

USDA Forest Service is an equal opportunity provider and employer.

Printed May 2019

- Forest Boundary
- Mount St. Helens NVM
- Wilderness Area
- Columbia River Gorge National Scenic Area
- Forest Service Office

- Summit
- City, Town, Community
- Airport
- Recreation Sites
- Campground
- Information

- Interstate Hwy.
- US, State or County Hwy.
- Paved Road
- Gravel Road
- Lakes and River Areas
- Rivers

This map is intended for general reference and is approximate in general proportions.

Elevations are in Feet

